

5-12-00

HOCKING COUNTY

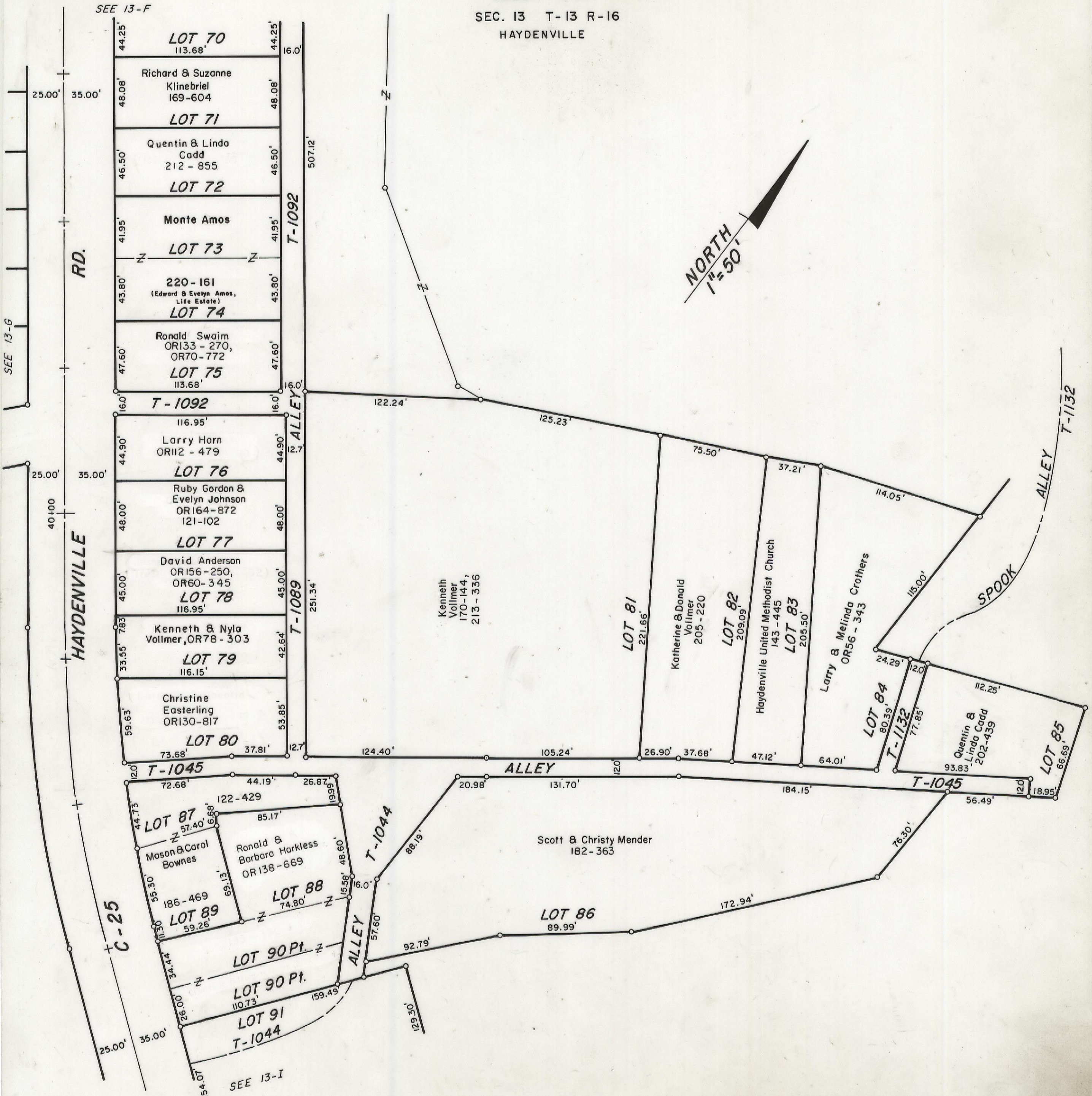
GREEN TWP.

SEC. 13 T-13 R-16

HAYDENVILLE

13-H

SEE 13-F



SEE 13-G

25.00' 35.00'

RD.

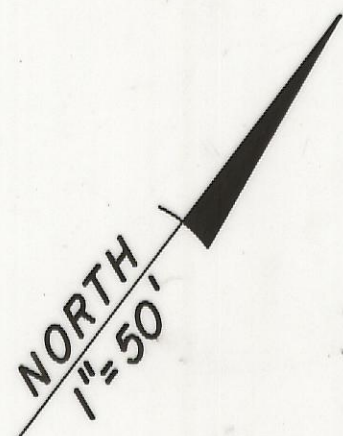
25.00' 35.00'

HAYDENVILLE

25.00' 35.00'

C-25

SEE 13-I



HAYDENVILLE