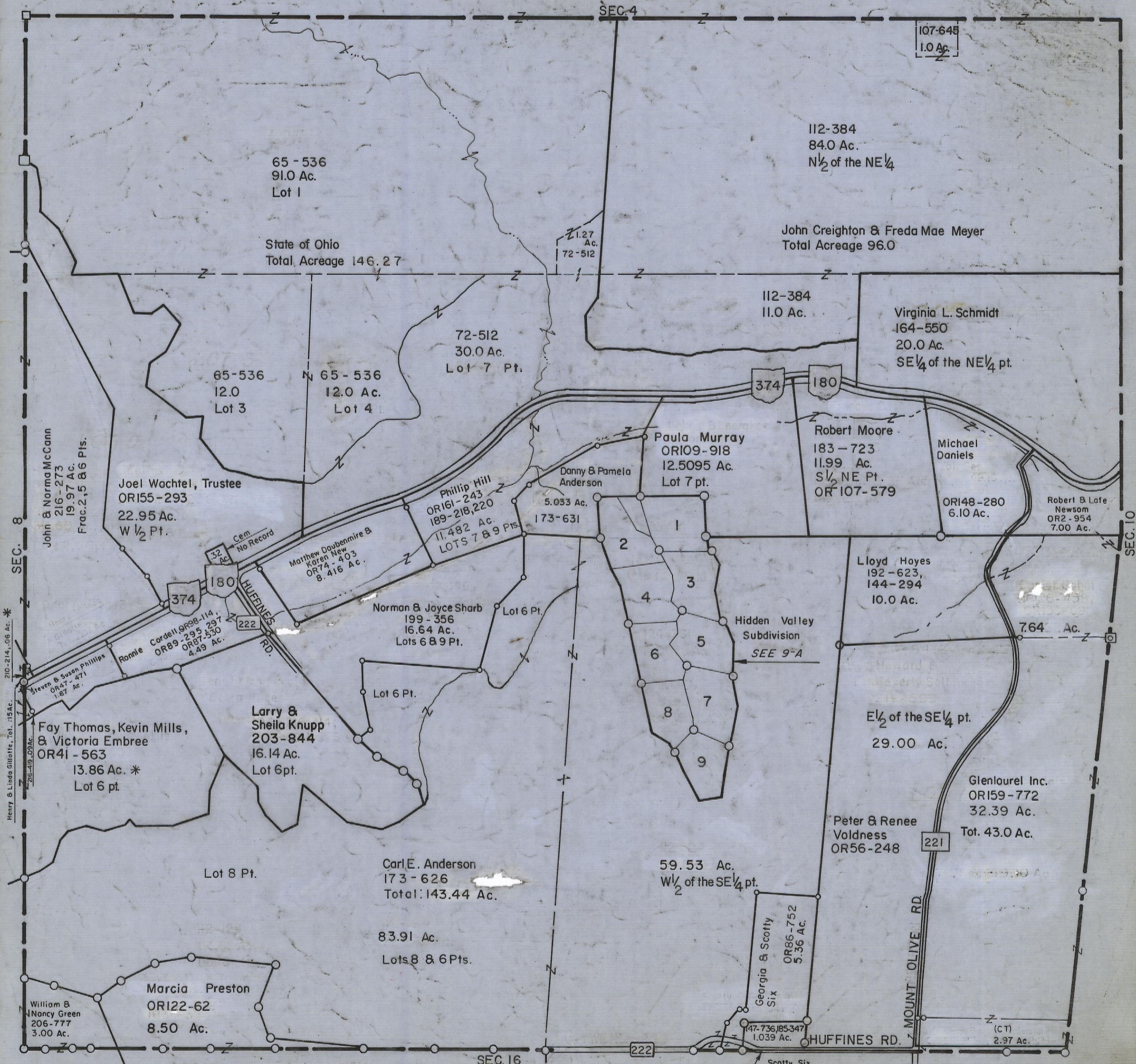


3-27-80

HOCKING COUNTY
LAUREL TWP
T.12 R.18
SEC. 9



SEC. 8
210-214, .06 Ac. *
Henry & Linda Gillette, Tot. .15 Ac.
216-49, .09 Ac.

SEC. 10

SEC. 16

SEC. 9

65-536
91.0 Ac.
Lot 1

State of Ohio
Total Acreage 146.27

112-384
84.0 Ac.
N 1/2 of the NE 1/4

John Creighton & Freda Mae Meyer
Total Acreage 96.0

107-648
1.0 Ac.

1.27
Ac.
72-512

112-384
11.0 Ac.

Virginia L. Schmidt
164-550
20.0 Ac.
SE 1/4 of the NE 1/4 pt.

72-512
30.0 Ac.
Lot 7 Pt.

65-536
12.0
Lot 3

65-536
12.0 Ac.
Lot 4

John & Norma McCann
216-273
19.97 Ac.
Frac. 2, 5 & 6 Pts.

Joel Wachtel, Trustee
OR155-293
22.95 Ac.
W 1/2 Pt.

Paula Murray
OR109-918
12.5095 Ac.
Lot 7 pt.

Robert Moore
183-723
11.99 Ac.
S 1/2 NE Pt.
OR 107-579

Michael Daniels

OR148-280
6.10 Ac.

Robert & Lela
Newsom
OR2-954
7.00 Ac.

Phillip Hill
OR161-243
189-218,220
11.482 Ac.
LOTS 7 & 9 Pts.

Danny & Pamela
Anderson
5.033 Ac.
173-631

Matthew Daubenmire &
Karen New
OR74-403
8.416 Ac.

Norman & Joyce Sharb
199-356
16.64 Ac.
Lots 6 & 9 Pt.

Lloyd Hoyes
192-623,
144-294
10.0 Ac.

7.64 Ac.

210-214, .06 Ac. *
Henry & Linda Gillette, Tot. .15 Ac.
216-49, .09 Ac.

Ronnie
Cordell, OR98-114,
OR89-295, 297,
OR87-530
4.49 Ac.

Fay Thomas, Kevin Mills,
& Victoria Embree
OR41-563
13.86 Ac. *
Lot 6 pt.

Larry &
Sheila Knupp
203-844
16.14 Ac.
Lot 6 pt.

Hidden Valley
Subdivision
SEE 9-A

E 1/2 of the SE 1/4 pt.
29.00 Ac.

Glenlaurel Inc.
OR159-772
32.39 Ac.
Tot. 43.0 Ac.

Lot 8 Pt.

Carl E. Anderson
173-626
Total: 143.44 Ac.

59.53 Ac.
W 1/2 of the SE 1/4 pt.

83.91 Ac.
Lots 8 & 6 Pts.

Peter & Renee
Voldness
OR56-248

MOUNT OLIVE RD.

Georgia & Scotty
Six
OR86-752
5.36 Ac.

147-736, 185-347
1.039 Ac.

HUFFINES RD.

(CT)
2.97 Ac.

William &
Nancy Green
206-777
3.00 Ac.

Marcia Preston
OR122-62
8.50 Ac.

Scotty Six