

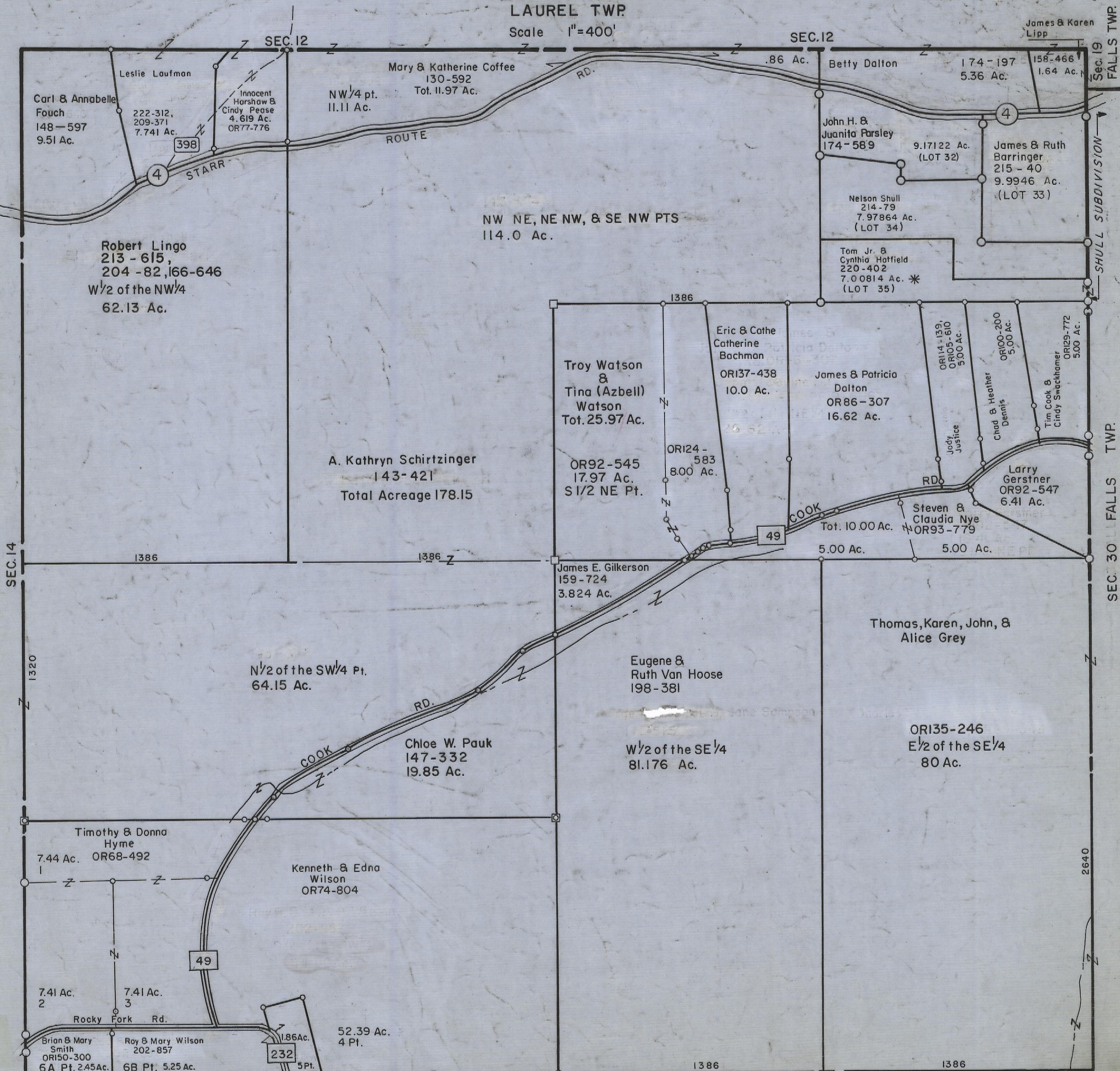
3-6-00

# HOCKING COUNTY

Sec.13 T12 R18

## LAUREL TWP.

Scale 1"=400'



Robert Lingo  
213 - 615,  
204 - 82, 166-646  
W 1/2 of the NW 1/4  
62.13 Ac.

Mary & Katherine Coffee  
130-592  
Tot. 11.97 Ac.  
NW 1/4 pt.  
11.11 Ac.

NW NE, NE NW, & SE NW PTS  
114.0 Ac.

A. Kathryn Schirtzinger  
143-421  
Total Acreage 178.15

Troy Watson  
&  
Tina (Azbell)  
Watson  
Tot. 25.97 Ac.

OR92-545  
17.97 Ac.  
S 1/2 NE Pt.

Eric & Cathe  
Catherine  
Bachman  
OR137-438  
10.0 Ac.

James & Patricia  
Dalton  
OR86-307  
16.62 Ac.

James E. Gilkerson  
159-724  
3.824 Ac.

Eugene &  
Ruth Van Hoose  
198-381

W 1/2 of the SE 1/4  
81.176 Ac.

Thomas, Karen, John, &  
Alice Grey

OR135-246  
E 1/2 of the SE 1/4  
80 Ac.

Chloe W. Pauk  
147-332  
19.85 Ac.

Timothy & Donna  
Hyme  
7.44 Ac. OR68-492

Kenneth & Edna  
Wilson  
OR74-804

7.41 Ac.  
2

7.41 Ac.  
3

Brian & Mary  
Smith  
OR150-300  
6 A Pt. 2.45 Ac.

Roy & Mary Wilson  
202-857  
6 B Pt. 5.25 Ac.

52.39 Ac.  
4 Pt.

Division Of  
Lot 6 Of  
Wilson's Acres Sub.

WILSON'S ACRES SUB.

- Lots 1-6 ( See Also Sec. 24)  
- Plat Cabinet 2, Pgs. 2,3

-Lots 6A-6D(See Also Sec. 24)  
-Plat Cabinet 2, Pg.36

# SEC. 13