

5-12-00

# HOCKING COUNTY

SEC. 3 T.15 R.17

MARION TWP.

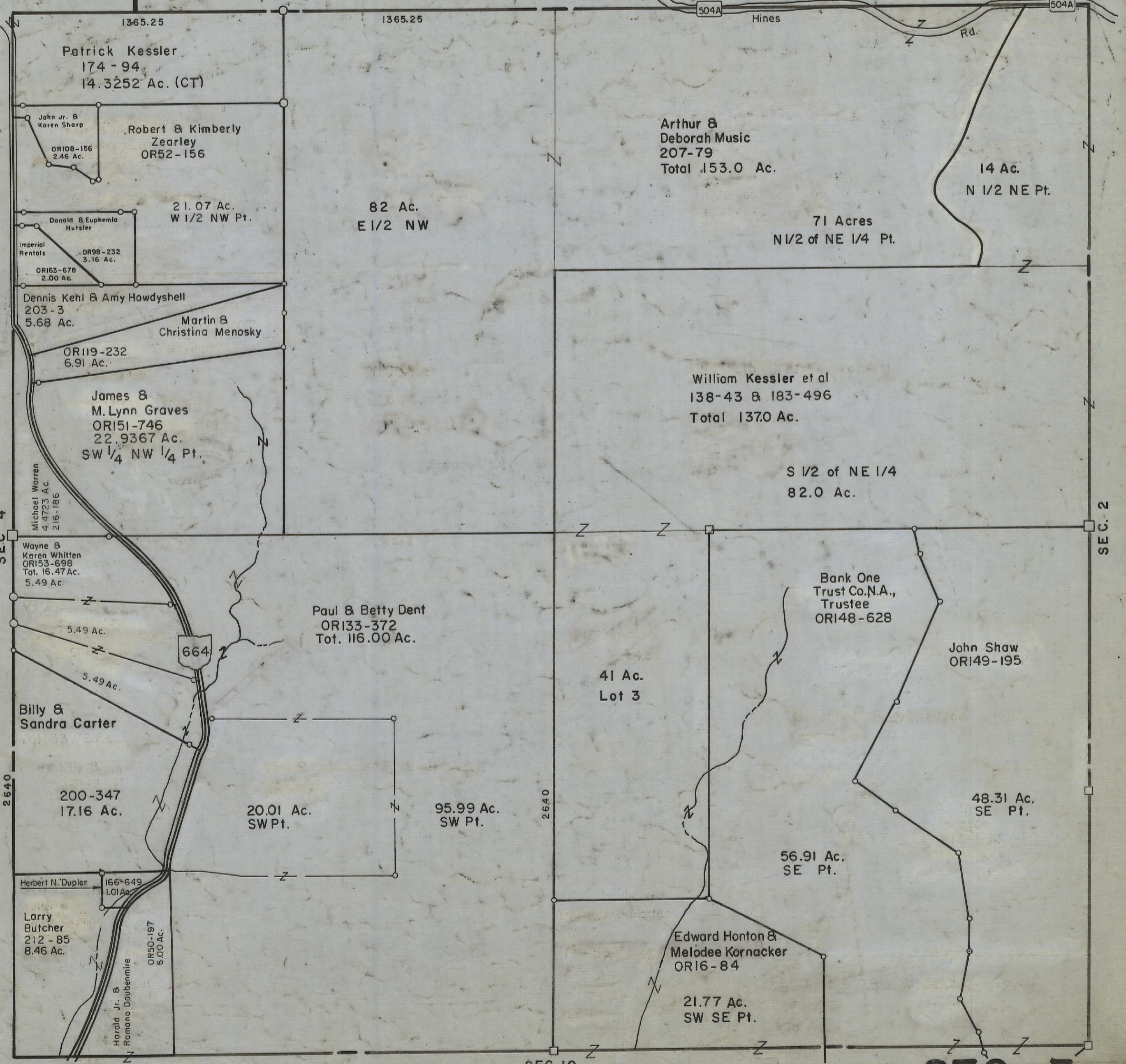
Scale 1"=400'

SEC. 33

RUSH CREEK TOWNSHIP

Fairfield County

SEC. 34



Patrick Kessler  
174 - 94  
14.3252 Ac. (CT)

John Jr. &  
Karen Sharp  
OR108-156  
2.46 Ac.

Robert & Kimberly  
Zearley  
OR52-156

21.07 Ac.  
W 1/2 NW Pt.

82 Ac.  
E 1/2 NW

Arthur &  
Deborah Music  
207-79  
Total 153.0 Ac.

14 Ac.  
N 1/2 NE Pt.

71 Acres  
N 1/2 of NE 1/4 Pt.

William Kessler et al  
138-43 & 183-496  
Total 1370 Ac.

S 1/2 of NE 1/4  
82.0 Ac.

Bank One  
Trust Co. N.A.,  
Trustee  
OR148-628

John Shaw  
OR149-195

41 Ac.  
Lot 3

48.31 Ac.  
SE Pt.

56.91 Ac.  
SE Pt.

Edward Honton &  
Melodee Kornacker  
OR16-84

21.77 Ac.  
SW SE Pt.

Imperial  
Rentals  
OR163-678  
2.00 Ac.

Donald & Euphemia  
Hutsler  
OR98-232  
3.16 Ac.

Dennis Kehl & Amy Howdysell  
203-3  
5.68 Ac.

Martin &  
Christina Menosky

OR119-232  
6.91 Ac.

James &  
M. Lynn Graves  
OR151-746  
22.9367 Ac.  
SW 1/4 NW 1/4 Pt.

Michael Warren  
4.4723 Ac.  
216-186

Wayne &  
Karen Whitten  
OR153-698  
Tot. 16.47 Ac.  
5.49 Ac.

Paul & Betty Dent  
OR133-372  
Tot. 116.00 Ac.

Billy &  
Sandra Carter

200-347  
17.16 Ac.

20.01 Ac.  
SW Pt.

95.99 Ac.  
SW Pt.

Herbert N. Dupler  
166-649  
1.01 Ac.

Larry  
Butcher  
212-85  
8.46 Ac.

Harold Jr. &  
Romona Daubennire  
OR50-197  
6.00 Ac.

SEC. 10

SEC 3