

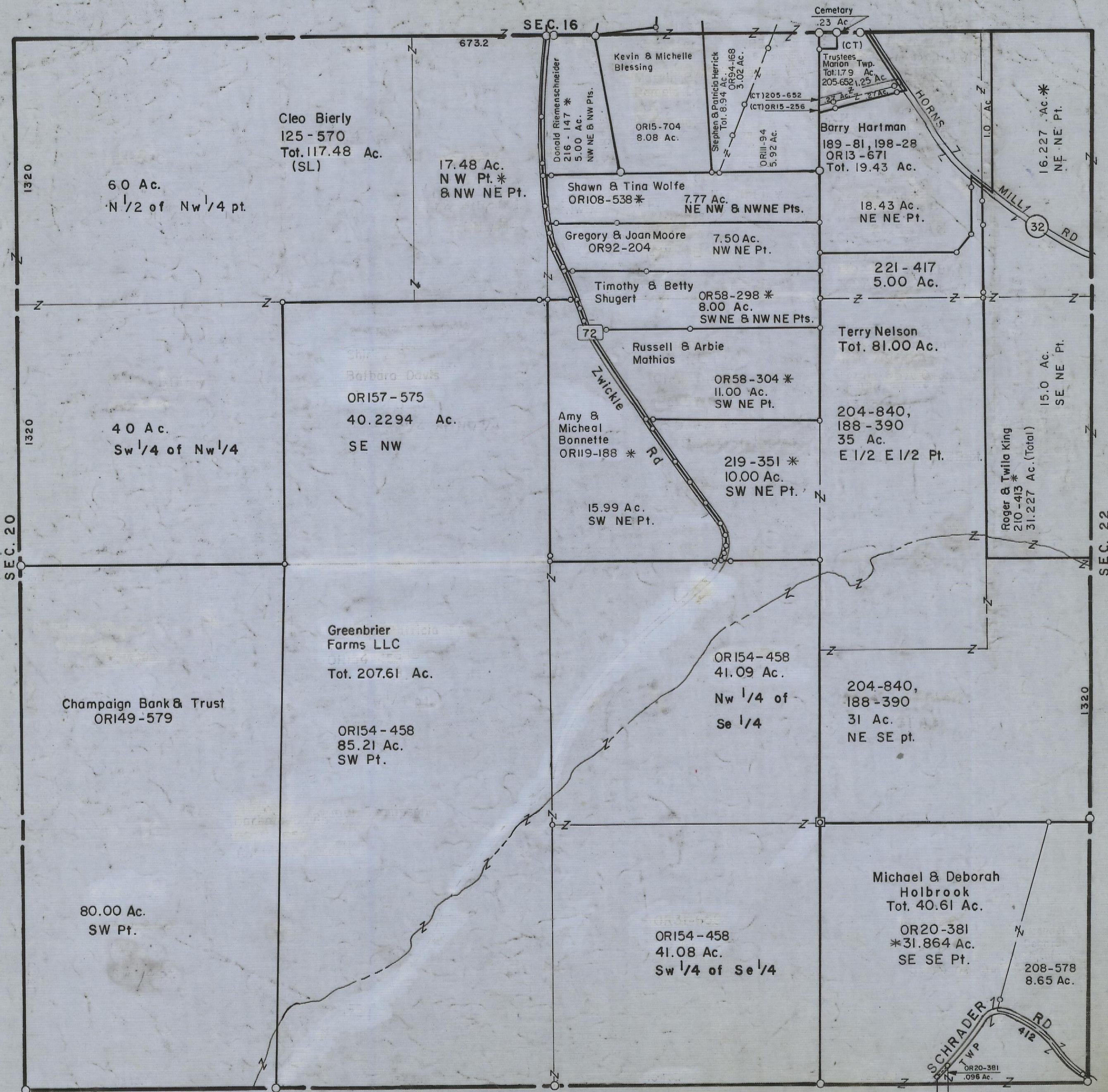
5-12-00

HOCKING COUNTY

Sec. 21 T.15 R.17

MARION TWP.

Scale 1" = 400'



Cleo Bierly
125-570
Tot. 117.48 Ac.
(SL)

60 Ac.
N 1/2 of Nw 1/4 pt.

17.48 Ac.
NW Pt. *
& NW NE Pt.

Kevin & Michelle
Blessing

OR15-704
8.08 Ac.

SEC. 16

Donald Riemenschneider
216-147 *
5.00 Ac.
NW NE & NW Pts.

Stephen & Patricia Herrick
Tot. 8.94 Ac.
OR94-168
3.02 Ac.

OR111-94
5.92 Ac.

Cemetery
.23 Ac

(CT)
Trustees
Marion Twp.
Tot. 1.79 Ac.
205-652, 1.25 Ac.

Barry Hartman
189-81, 198-28
OR13-671
Tot. 19.43 Ac.

16.227 Ac. *
NE-NE Pt.

Shawn & Tina Wolfe
OR108-538 *
7.77 Ac.
NE NW & NWNE Pts.

18.43 Ac.
NE NE Pt.

Gregory & Joan Moore
OR92-204
7.50 Ac.
NW NE Pt.

221-417
5.00 Ac.

Timothy & Betty
Shugert
OR58-298 *
8.00 Ac.
SW NE & NW NE Pts.

Terry Nelson
Tot. 81.00 Ac.

Russell & Arbie
Mathias
OR58-304 *
11.00 Ac.
SW NE Pt.

204-840,
188-390
35 Ac.
E 1/2 E 1/2 Pt.

Amy & Micheal
Bonnette
ORI19-188 *
15.99 Ac.
SW NE Pt.

219-351 *
10.00 Ac.
SW NE Pt.

Roger & Twilla King
210-413 *
31.227 Ac. (Total)

Barbara Davis
OR157-575
40.2294 Ac.
SE NW

40 Ac.
Sw 1/4 of Nw 1/4

Greenbrier
Farms LLC
Tot. 207.61 Ac.

OR154-458
85.21 Ac.
SW Pt.

OR154-458
41.09 Ac.
Nw 1/4 of
Se 1/4

204-840,
188-390
31 Ac.
NE SE pt.

Champaign Bank & Trust
ORI49-579

80.00 Ac.
SW Pt.

OR154-458
41.08 Ac.
Sw 1/4 of Se 1/4

Michael & Deborah
Holbrook
Tot. 40.61 Ac.

OR20-381
*31.864 Ac.
SE SE Pt.

208-578
8.65 Ac.

SCHRADER RD
412
OR20-381
.096 Ac.

SEC. 28

SEC 21