

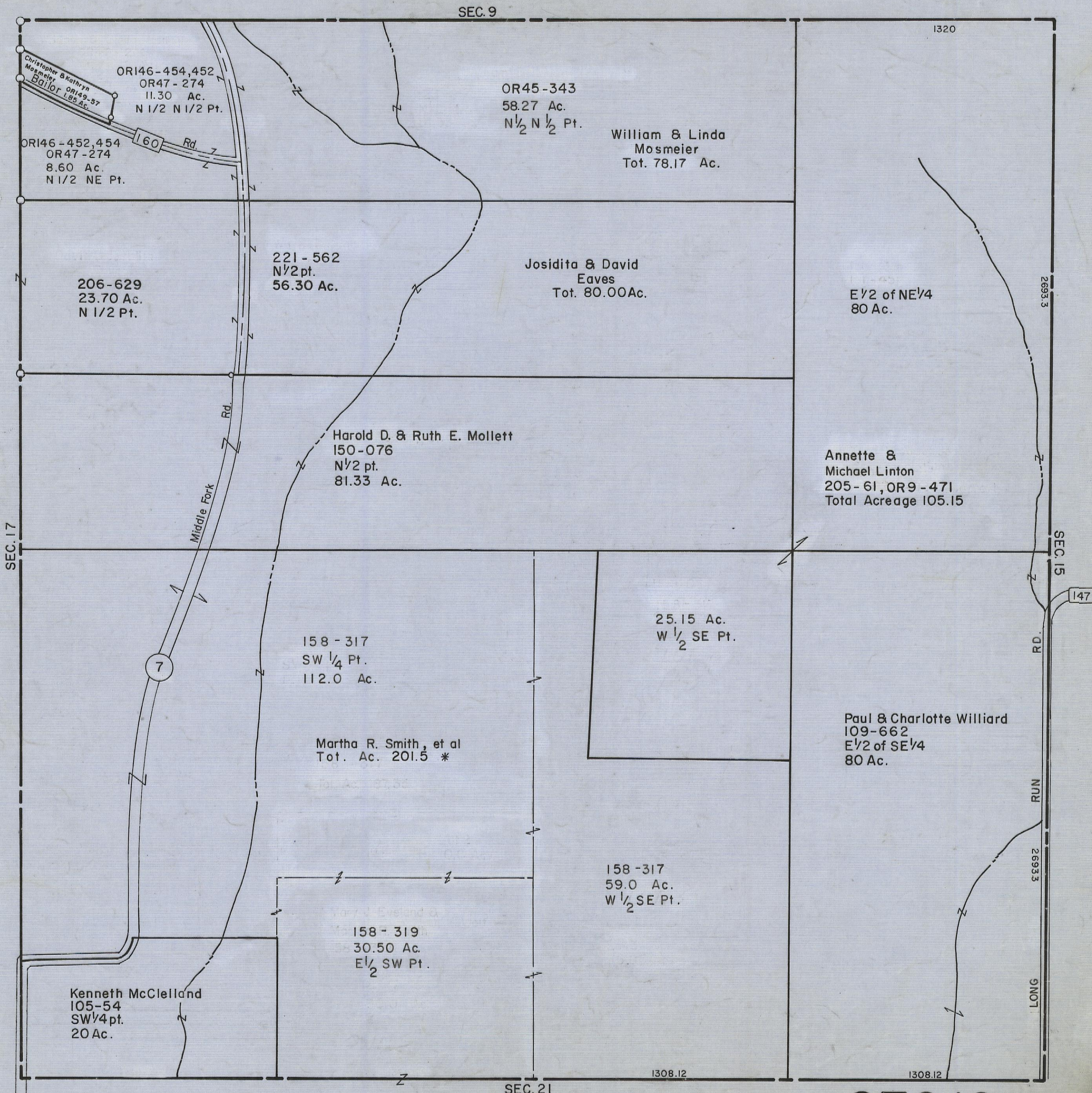
5-12-00

HOCKING COUNTY

Sec. 16 T12 R19

PERRY TWP.

Scale: 1" = 400'



SEC. 9

1320

Christopher & Kathryn
Mosmeier
Bailor
ORI49-57
1.85 Ac.

ORI46-454,452
OR47-274
11.30 Ac.
N 1/2 N 1/2 Pt.

ORI46-452,454
OR47-274
8.60 Ac.
N 1/2 NE Pt.

OR45-343
58.27 Ac.
N 1/2 N 1/2 Pt.

William & Linda
Mosmeier
Tot. 78.17 Ac.

206-629
23.70 Ac.
N 1/2 Pt.

221-562
N 1/2 pt.
56.30 Ac.

Josidita & David
Eaves
Tot. 80.00 Ac.

E 1/2 of NE 1/4
80 Ac.

Harold D. & Ruth E. Mollett
150-076
N 1/2 pt.
81.33 Ac.

Annette &
Michael Linton
205-61, OR9-471
Total Acreage 105.15

SEC. 17

SEC. 15

7

158-317
SW 1/4 Pt.
112.0 Ac.

25.15 Ac.
W 1/2 SE Pt.

Martha R. Smith, et al
Tot. Ac. 201.5 *

Paul & Charlotte Williard
109-662
E 1/2 of SE 1/4
80 Ac.

Kenneth McClelland
105-54
SW 1/4 pt.
20 Ac.

158-319
30.50 Ac.
E 1/2 SW Pt.

158-317
59.0 Ac.
W 1/2 SE Pt.

1308.12

1308.12

SEC. 21

SEC. 16