

5-12-00

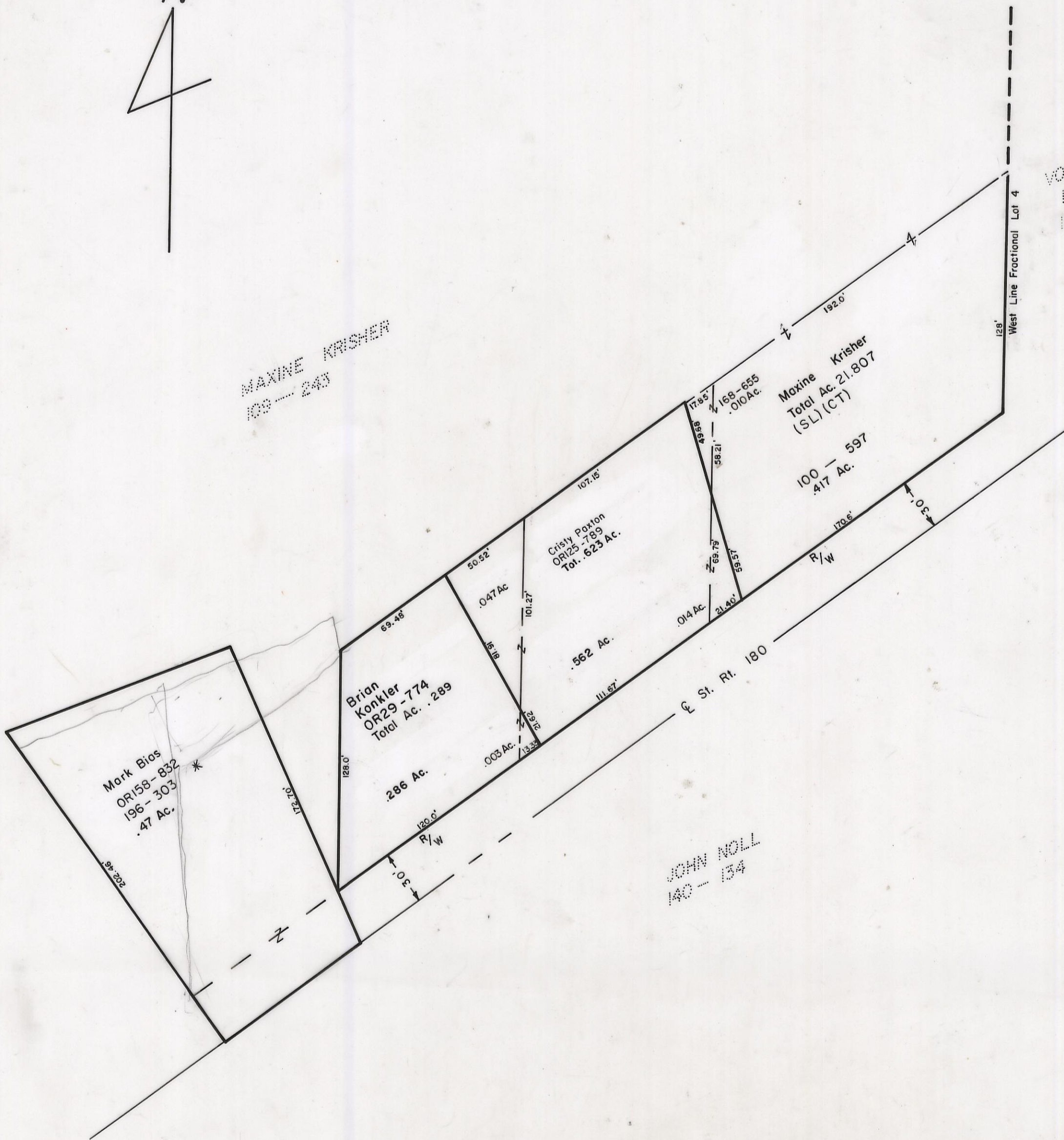
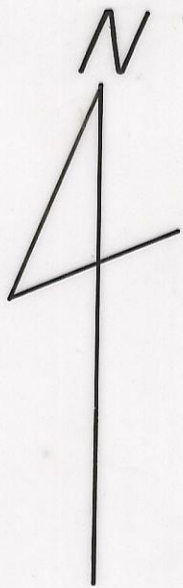
# HOCKING COUNTY

PERRY TWP.

SEC. 24 T 12 R 19

Scale 1" = 50'

24-A



MAXINE KRISHER  
109 - 243

VOLNEY &  
NANCY CRABTREE  
133 - 31

Mark Bios  
OR158-832 \*  
196-303  
.47 Ac.

Brian  
Konkler  
OR29-774  
Total Ac. .289  
286 Ac.

Crisly Paxton  
OR125-789  
Tot. .623 Ac.

Moxine Krisher  
Total Ac. 21.807  
(SL)(CT)  
100 - 597  
.417 Ac.

JOHN NOLL  
140 - 134

24-A