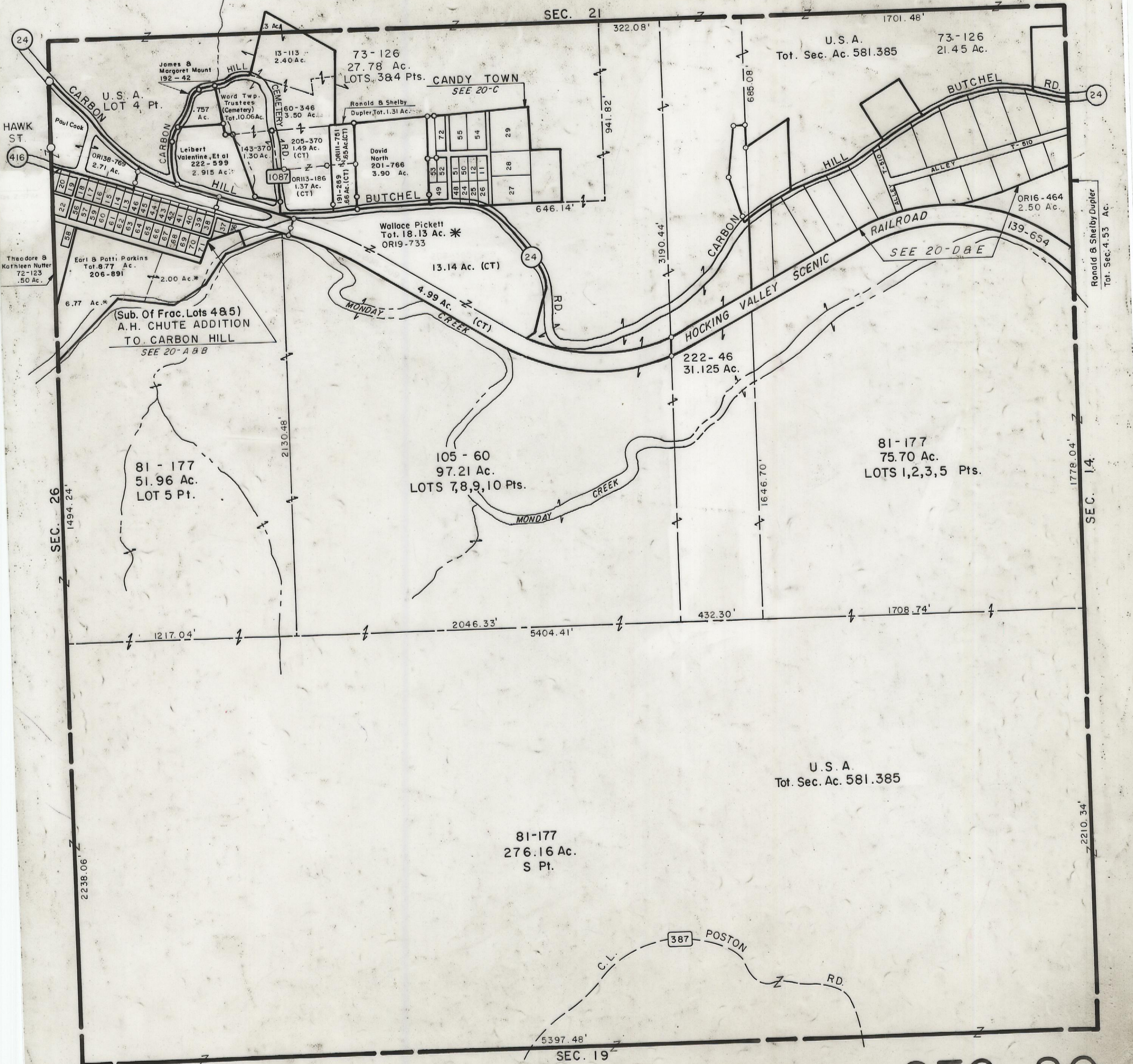


5-12-00

HOCKING COUNTY

WARD TWP.
SEC. 20 T13 R15
Scale 1" = 400'



24

HAWK ST

416

Theodore & Kathleen Nutter
72-123
.50 Ac.

Earl & Patti Parkins
Tot. 8.77 Ac.
206-891

(Sub. Of Frac. Lots 485)
A.H. CHUTE ADDITION
TO CARBON HILL
SEE 20-A & B

81-177
51.96 Ac.
LOT 5 Pt.

105-60
97.21 Ac.
LOTS 7,8,9,10 Pts.

Wallace Pickett
Tot. 18.13 Ac. *
OR19-733

Leibert Valentine, Et al
222-599
2.915 Ac.

James & Margaret Mount
192-42

13-113
2.40 Ac.

73-126
27.78 Ac.
LOTS 3&4 Pts. CANDY TOWN
SEE 20-C

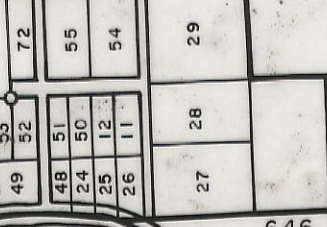
Ronald & Shelby
Dupler, Tot. 1.31 Ac.

David North
201-766
3.90 Ac.

OR11-751
1.49 Ac.
(CT)

OR11-186
1.37 Ac.
(CT)

OR11-269
1.66 Ac.
(CT)



U.S.A.
Tot. Sec. Ac. 581.385

73-126
21.45 Ac.

Ronald & Shelby Dupler
Tot. Sec. 4.53 Ac.

81-177
75.70 Ac.
LOTS 1,2,3,5 Pts.

U.S.A.
Tot. Sec. Ac. 581.385

81-177
276.16 Ac.
S Pt.

SEC. 20

SEC. 21

SEC. 26

SEC. 14

SEC. 19

387

POSTON RD.

RD.

BUTCHEL RD.

CARBON HILL

CARBON HILL

BUTCHEL

HOCKING VALLEY SCENIC RAILROAD

MONDAY CREEK

MONDAY CREEK

SEE 20-D & E

5404.41'

1217.04'

2046.33'

1708.74'

432.30'

1494.24'

2130.48'

3190.44'

322.08'

1701.48'

685.08'

646.14'

2210.34'

1778.04'

2238.06'