

4-5-00

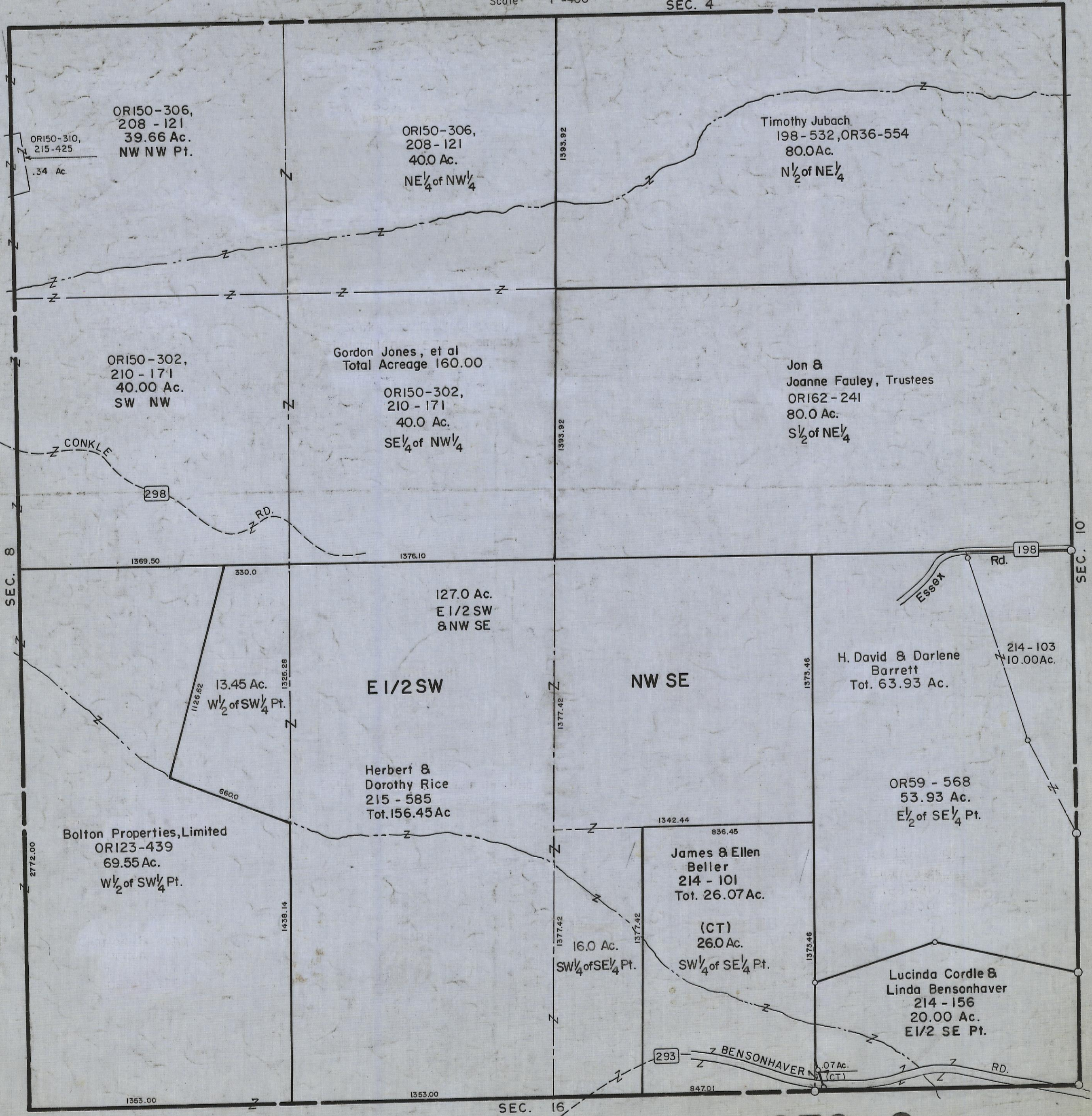
HOCKING COUNTY

Sec. 9 T13 R17

WASHINGTON TWP.

Scale 1"=400'

SEC. 4



SEC. 8

SEC. 10

SEC. 16

SEC. 9

OR150-306,
208 - 121
39.66 Ac.
NW NW Pt.

OR150-310,
215-425
.34 Ac.

OR150-306,
208 - 121
40.0 Ac.
NE 1/4 of NW 1/4

Timothy Jubach
198 - 532, OR36-554
80.0 Ac.
N 1/2 of NE 1/4

OR150-302,
210 - 171
40.00 Ac.
SW NW

Gordon Jones, et al
Total Acreage 160.00

OR150-302,
210 - 171
40.0 Ac.
SE 1/4 of NW 1/4

Jon &
Joanne Fauley, Trustees
OR162 - 241
80.0 Ac.
S 1/2 of NE 1/4

127.0 Ac.
E 1/2 SW
& NW SE

E 1/2 SW

NW SE

H. David & Darlene
Barrett
Tot. 63.93 Ac.

214 - 103
10.00 Ac.

13.45 Ac.
W 1/2 of SW 1/4 Pt.

Herbert &
Dorothy Rice
215 - 585
Tot. 156.45 Ac

OR59 - 568
53.93 Ac.
E 1/2 of SE 1/4 Pt.

Bolton Properties, Limited
OR123-439
69.55 Ac.
W 1/2 of SW 1/4 Pt.

James & Ellen
Beller
214 - 101
Tot. 26.07 Ac.

(CT)
26.0 Ac.
SW 1/4 of SE 1/4 Pt.

16.0 Ac.
SW 1/4 of SE 1/4 Pt.

Lucinda Cordle &
Linda Bensonhaver
214 - 156
20.00 Ac.
E 1/2 SE Pt.

RD. 293 BENSONHAVER RD.