

BAILEY SUB.
- Lots 1-5
Plat Cab. 2, Pg. 27

01330000
on Manuel
286-678
13.82 Ac.
ac.4 Pt..
.17 Ac.

Timothy & Brenda
Hammond
OR199-66
6.28 Ac.
Frac. 9 Pt.
050001570000

James & Norma Wharton
OR181-180, 3.41 Ac., Frac.9 Pt.
050001440000

Larry, Jean,
Patricia &
Sandra Wood
050001550000
OR101-219*
43.46 Ac.

Tot. 3.86 Ac.

OR71-296
1.40 Ac. (CT)
050001310000

Frac.5
17.00 A

Ricketts
Excavating, Inc.
157-746
3.20 Ac.
050001400000

Robin Wyckoff, et al
(Helen Griffin, L.E.)
183-232
Tot. 8.75 Ac.
050001360000

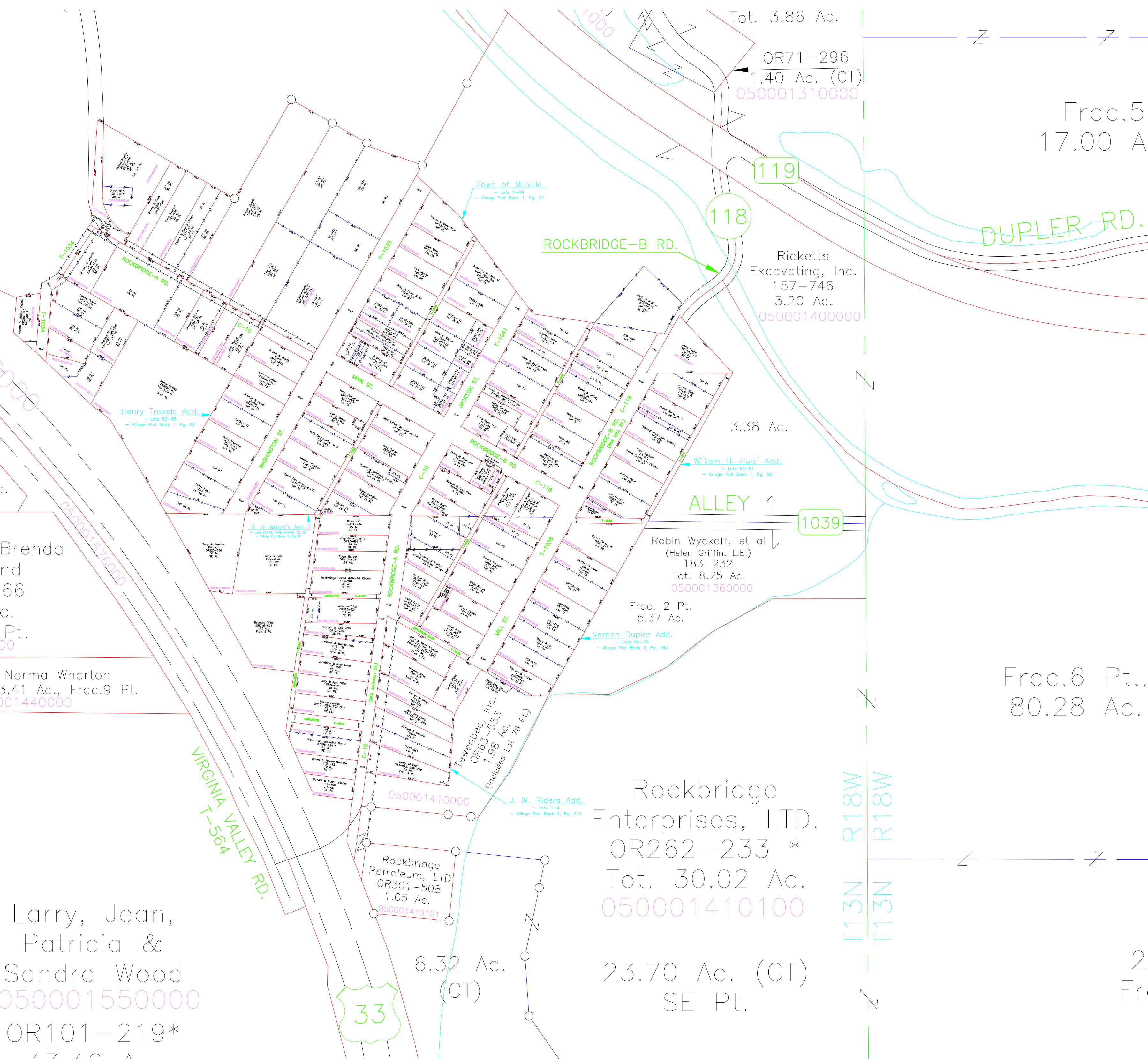
Frac. 2 Pt.
5.37 Ac.

Rockbridge
Enterprises, LTD.
OR262-233 *
Tot. 30.02 Ac.
050001410100

23.70 Ac. (CT)
SE Pt.

Rockbridge
Petroleum, LTD
OR301-508
1.05 Ac.
050001410101

6.32 Ac.
(CT)



.65 Ac.

3.38 Ac.

Frac.6 Pt..
80.28 Ac.

33

119

118

1039

R18W
R18W
T13N
T13N

2
Frac.