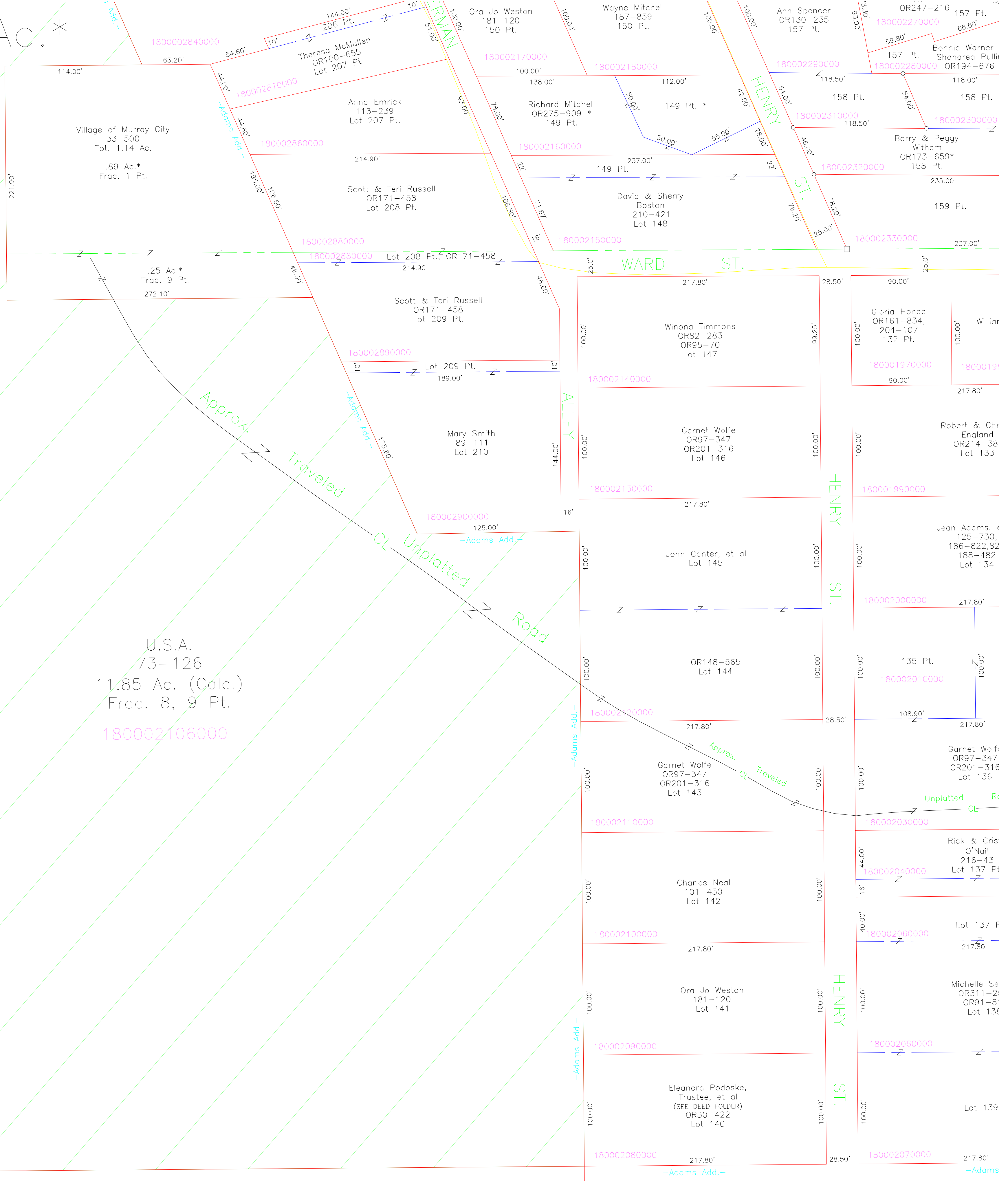


2.35 Ac.*

004
003



U.S.A.
73-126
11.85 Ac. (Calc.)
Frac. 8, 9 Pt.
180002106000

Marlene Shoof, et al
172-531, 173-175
35.49 Ac.
Frac. 6, 7, 8 Pt.
1800002990000

MURRAY CITY

10.00'

10.00'