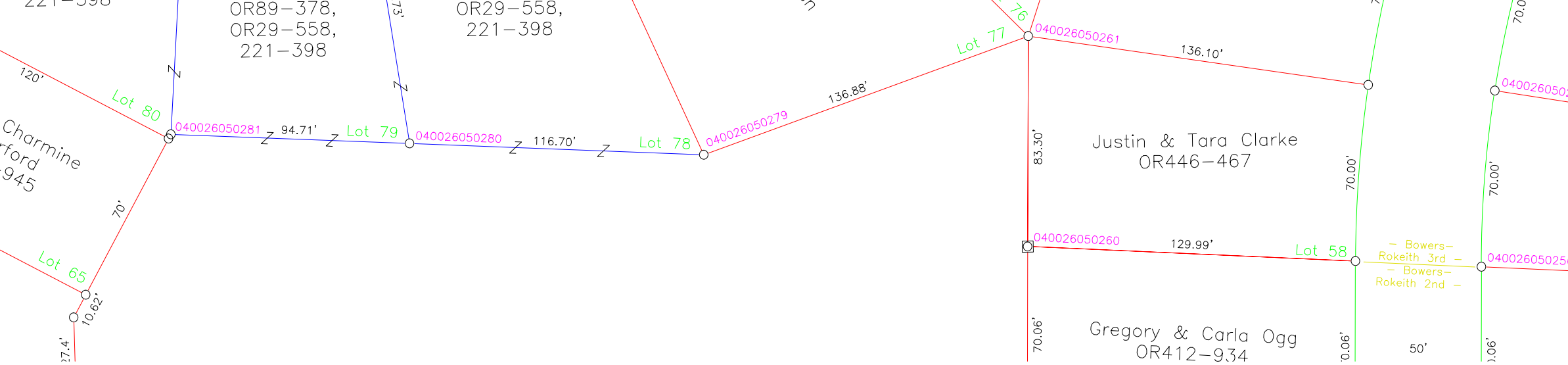
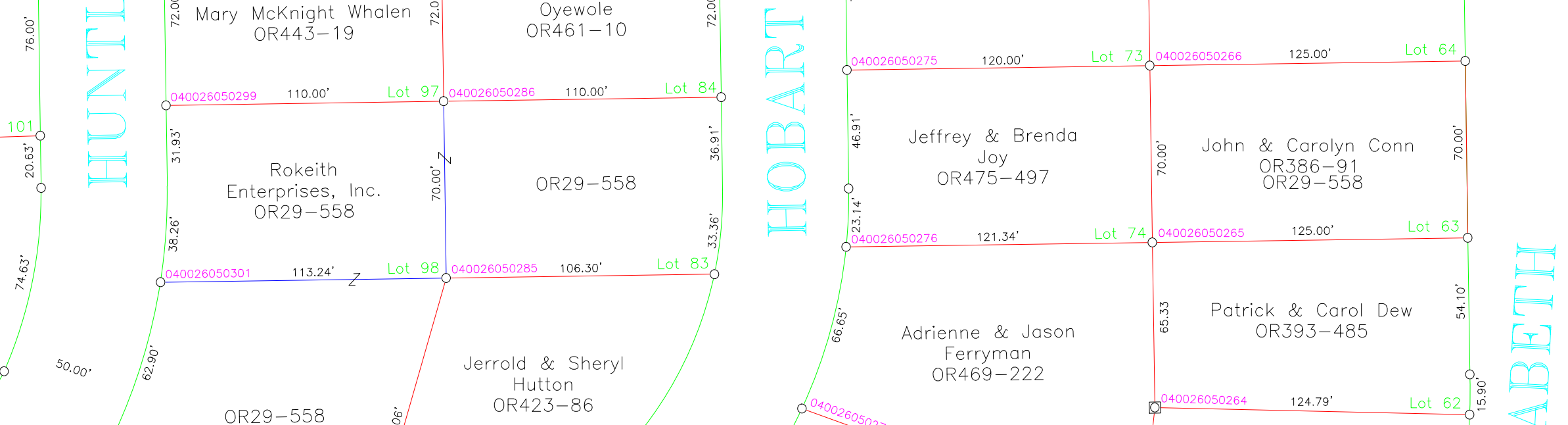
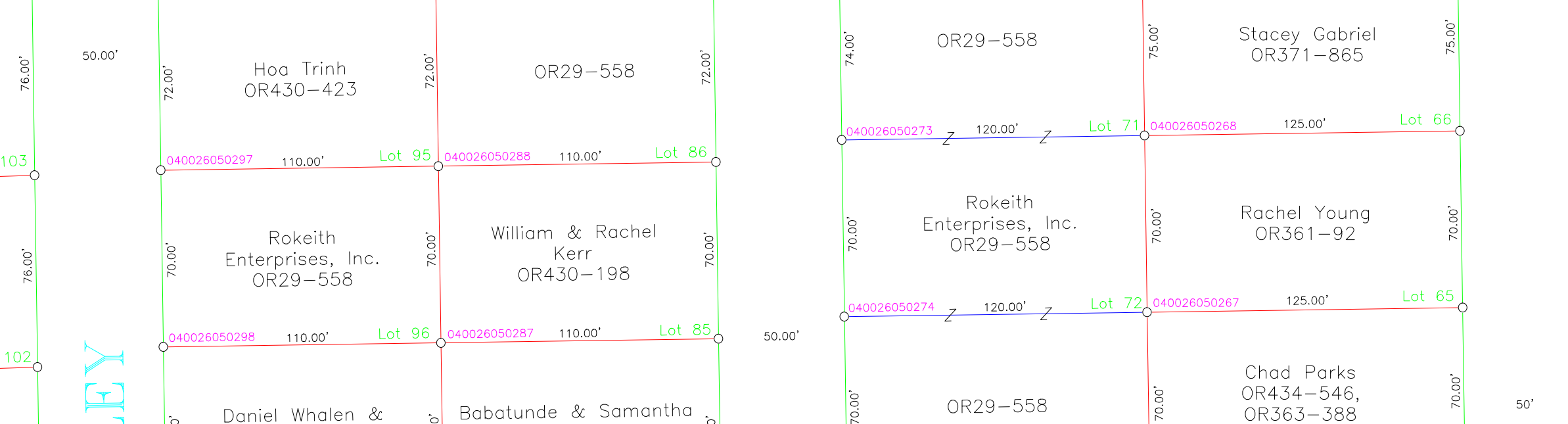
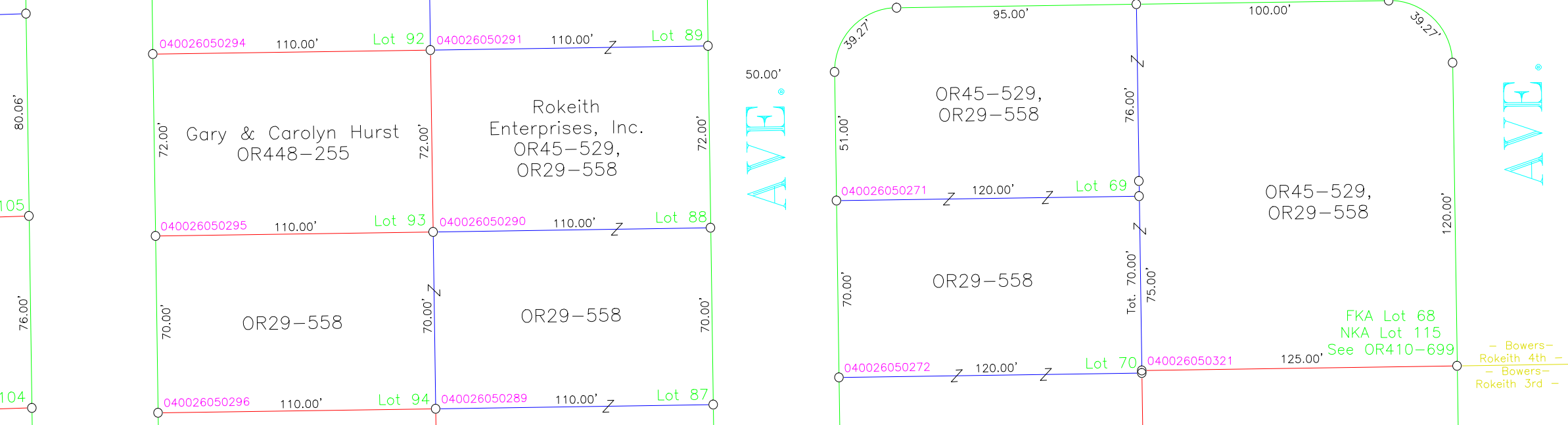
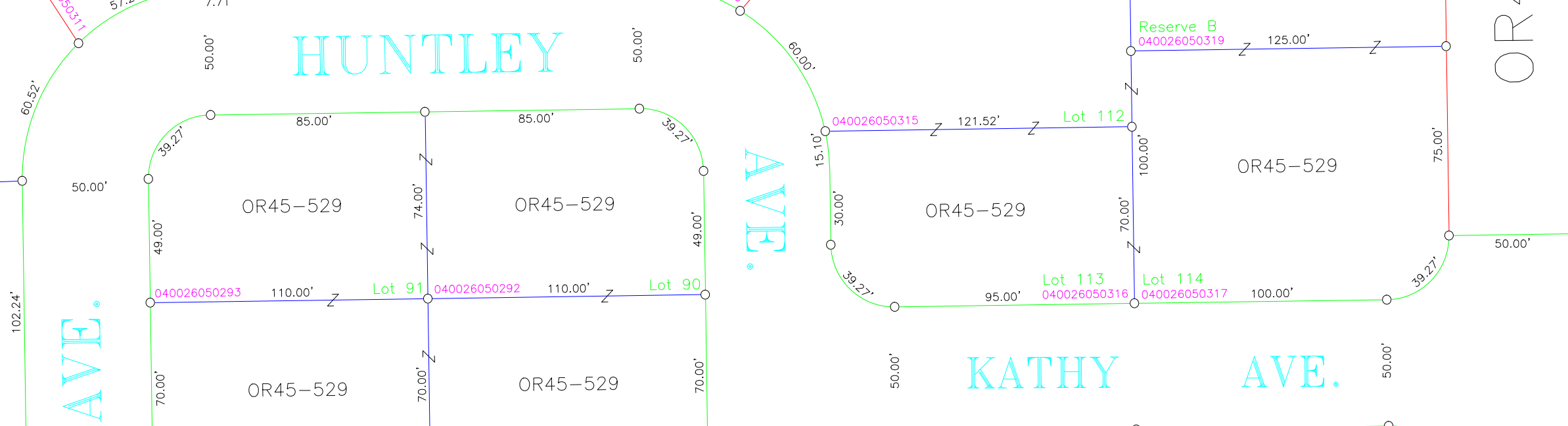
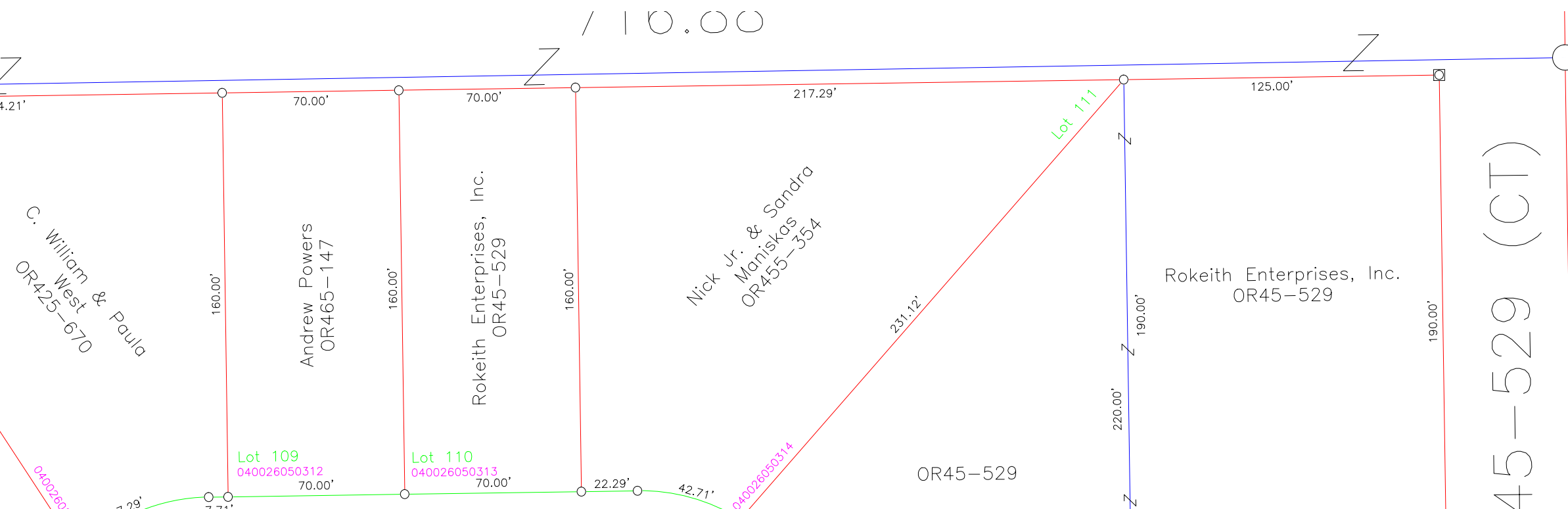


547.18'

SEE FALL SECTION

Corporation

Lot 108



Stephen Weis & Sandra Brown
Tot. 12.68 Ac.

Bowers-Rokeith 4th
Lots 68-114
Plat Cab. 2, Pg. 165, 166

OR29-649
9.86 Ac.
(CT)

Bowers-Rokeith 3rd
Lots 54-68, (Lot 67 Vacated)
Plat Cab. 2, Pg. 121, 122

Frac. Lot 10 Pt.
040001650000

OR330-742
2.82 AC.
(CT)

Corporation Lim

SCALE 1"=50'

LOGAN CITY 72

SCALE 1"=50'

LOGAN CITY 72

149.43'
150.88'
ma Smith
147-92,
125-83
1.00 Ac.
01640000
1.09'

Keith Enterprises, Inc
8.714 Ac. (Calc.) *
OR18-743
(CT)

Frac. Lot 8 & 9 Pts.
040001650100

197.53'
Stephen & Barbara Malone
OR366-612
Timothy & Christina Coleman
OR442-817
Scott & Jennie Smith
OR45-735
Stephen Shatz
(T.O.D. OR448-171)
William & Eva Eckelberry, Trustees
OR354-631

100 Pts.
040001650000