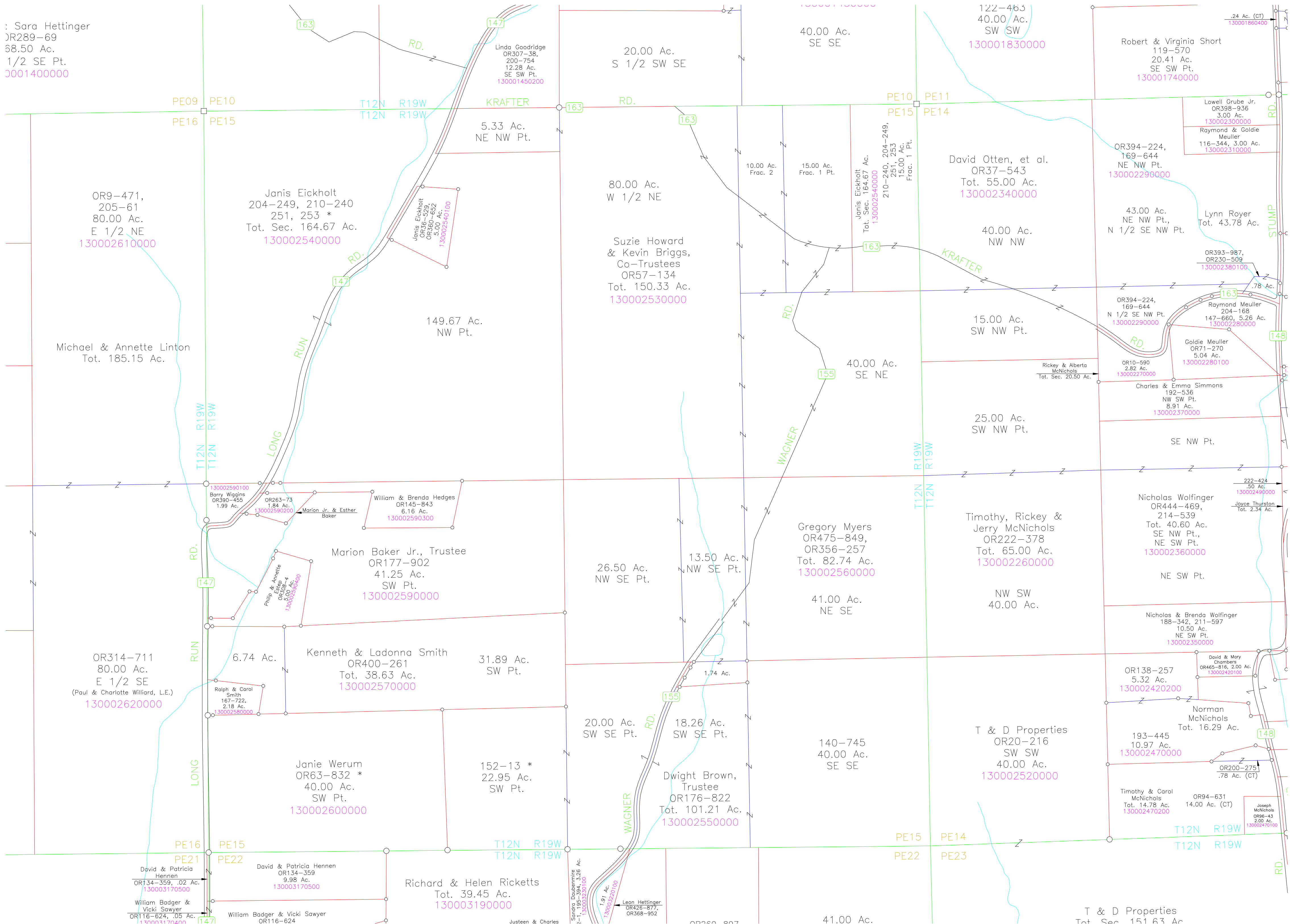


: Sara Hettinger
JR289-69
38.50 Ac.
1/2 SE Pt.
3001400000



OR9-471,
205-61
80.00 Ac.
E 1/2 NE
130002610000

Janis Eickholt
204-249, 210-240
251, 253 *
Tot. Sec. 164.67 Ac.
130002540000

Michael & Annette Linton
Tot. 185.15 Ac.

149.67 Ac.
NW Pt.

80.00 Ac.
W 1/2 NE

Suzie Howard
& Kevin Briggs,
Co-Trustees
OR57-134
Tot. 150.33 Ac.
130002530000

40.00 Ac.
SE NE

David Otten, et al.
OR37-543
Tot. 55.00 Ac.
130002340000

15.00 Ac.
SW NW Pt.

25.00 Ac.
SW NW Pt.

Gregory Myers
OR475-849,
OR356-257
Tot. 82.74 Ac.
130002560000

Timothy, Rickey &
Jerry McNichols
OR222-378
Tot. 65.00 Ac.
130002260000

Nicholas Wolfinger
OR444-469,
214-539
Tot. 40.60 Ac.
SE NW Pt.,
NE SW Pt.
130002360000

OR314-711
80.00 Ac.
E 1/2 SE
(Paul & Charlotte Williard, L.E.)
130002620000

Kenneth & Ladonna Smith
OR400-261
Tot. 38.63 Ac.
130002570000

Janie Werum
OR63-832 *
40.00 Ac.
SW Pt.
130002600000

152-13 *
22.95 Ac.
SW Pt.

Dwight Brown,
Trustee
OR176-822
Tot. 101.21 Ac.
130002550000

140-745
40.00 Ac.
SE SE

T & D Properties
OR20-216
SW SW
40.00 Ac.
130002520000

Norman
McNichols
Tot. 16.29 Ac.
193-445
10.97 Ac.
130002470000

David & Patricia
Hennen
OR134-359, .02 Ac.
130003170500

David & Patricia Hennen
OR134-359
9.98 Ac.
130003170500

Richard & Helen Ricketts
Tot. 39.45 Ac.
130003190000

Sandra Daubenmire
2-1, 195-394, 3.26 Ac.
130003300000

Leon Hettinger
OR426-877,
OR368-952

41.00 Ac.

T & D Properties
Tot. Sec. 151.63 Ac.

Joseph
McNichols
OR96-43
2.00 Ac.
130002470100