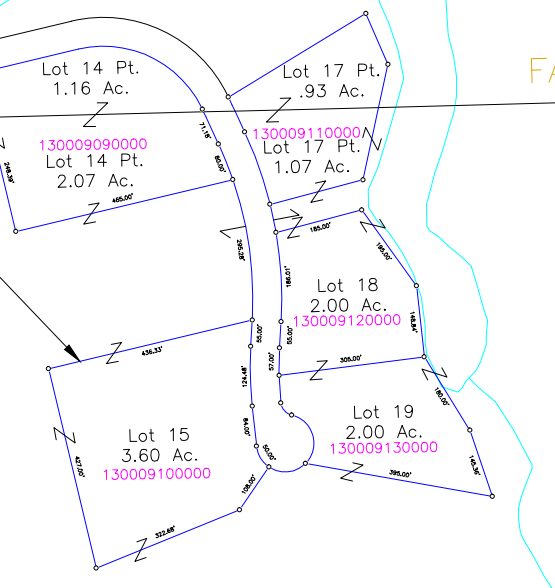


T13N R19W
T13N R19W
Ridge
7, LLC
30 Ac.

OR186-754
26.82 Ac.
Frac. 1, 2 Pts.
130006510000

Snortin Ridge
Subdivision
OR186-754
148-374
36.81 Ac.
"Reserve Area"
130006380000

SNORTIN RIDGE SUB.
- Lots 14-19 (Hocking County)
- (fka Plat Book G, Pgs. 5, 6, 7)
- Plat Cab. 1, pgs. 139 A,B, 140 A,B
Snortin Ridge
Subdivision
OR186-754
70.625 Ac.
"Reserve Area"
130006690000



80.00 Ac.
N 1/2 NE

Stanbery, Ltd.
OR381-114
Tot. 82.71 Ac.
130006700000

& S.
liams
625
Ac.
Pt.
100
130006390000
Linda Strohm &
Charles Sahr
OR159-303
17.30 Ac.
NE Pt.

Snortin Ridge
Company, LLC
Tot. 73.80 Ac.

Snortin Ridge
Company, LLC
OR186-750
134.02 Ac.
W 1/2 Pt.
130006680000

Robert Jr. & Kimberly
Maupin
OR303-34
38.49 Ac.
SE NE Pt.
130006710000

17.00 Ac.
NE Pt., NW SE Pt.
130006430000

OR186-750
42.48 Ac.
130006400000

Elizabeth Crane
Tot. 152.75 Ac.

OR411-571
98.10 Ac.
NE Pt.,
SE Pt.
130006720100

in Gofberg
90-355
Ac. 41.43 Ac.

James & Wendy
Thomson
OR230-737
20.26 Ac.
NE SE Pt.
130006500100

James & Wendy
Thomson
OR230-737
Tot. 28.29 Ac.
130006740100
22.29 Ac.
W 1/2 SW Pt.

0.00 Ac.
Pt., NW SE Pt.
006430000

David Thomas
OR212-900
Tot. 18.55 Ac.
130006450000
16.02 Ac.

Benny & Patricia Nichols
OR85-490
12.17 Ac.
NE SE Pt.
130006500000

Morgan Chapel
Trustees
Tot. 1.50 Ac.
(CT)
130006746400

Teresa & James Azbell
OR387-849
12.00 Ac.
SW Pt.
130006810000

OR411-571
98.10 Ac.
NE Pt.,
SE Pt.
130006720100

OR415-960
54.65 Ac.
130006720000

Eagle Wings I, LLC
OR413-956
14.0653 Ac.
130006440201

Dorothy & Roy Young
OR466-341, 217-574
21.19 Ac.
SE Pt.
130006520000

Robin Gofberg
OR443-788
4.43 Ac.
NE SE Pt.
130006500200

Virginia Corder
OR443-788
7.57 Ac.
OR228-203
12.00 Ac.
130006740300

Deighton D. & Stephanie Stump
OR406-397
14.33 Ac.
SE SW Pt.
130006790400

Michael & Ida
North
OR474-513
3.233 Ac.
130006460000

Edgar M. & Donna B. Stump,
Co. Trustees
OR372-136
13.00 Ac.
SE SE Pt.
130006530000

Robert & Doris Wolfe
211-369
2.00 Ac.
130006540000

Homer Carrel
127-307
2.50 Ac.
SE Pt.
130006500000

John McKinley
OR276-198
8.54 Ac.
130006740600

Jack D. & Wretha Malone
138-676
Tot. 8.66 Ac.
130006800000
5.50 Ac. (CT)

Christopher & Kimberly
Stump, et al.
OR378-166
13.64 Ac.
SE SW Pt.
130006790000

Gleneth Kane or John Kane III,
Trustees
OR403-638
2.77 Ac.
130006730000

Tim & Jan
Noice
OR66-888
5.62 Ac.
130006730300

Russell & Betty Nutter
OR414-197
2.00 Ac.
130006770000

Charles & Phyllis J.
Onde
156-53
1.61 Ac.
130006730100

Charles & Phyllis J.
Onde
164-298
3.19 Ac.
130006730200

Michael & Julie
Landfried
Tot. 7.14 Ac.
130006730100

Bobbie Thomas
OR435-465
12.40 Ac.
S 1/2 SE Pt.
130006750000

Jeremy & Lisa
Dennis
OR255-776
4.612 Ac.
130006480000

David & Mary Azbell
OR301-899
4.19 Ac.
130000270200

Thomas Gray
OR446-743
6.01 Ac.
130000270100

Nancy & William
Gruetze
OR421-335, 200 Ac.
130000280000

Nancy & William
Gruetze
OR421-335

Jack & Wretha Malone
130000040100

William Cambell
OR287-938

Deighton Jr. & Candy Stump
OR258-45, 2.85 Ac.
130000040200

Jill Carter
OR243-162
3.77 Ac.
130006730401

Larry Azbell, Sr.
211-82
130000050000

Jason & Jamie
Wallace
OR317-524
130006780000

Charles Smyers
OR51-793
10.75 Ac.
NE NE Pt.
130006700000

Timothy & Sharon
Hicks
OR13-21
6.94 Ac.
NE NE Pt.
130000110000

Ida North
4-513
36 Ac.
Pt.
1300000240000

David & Sandra
Seifert
OR321-99
6.01 Ac.
1300000270000

David & Mary Azbell
OR301-899, 1.82 Ac.
130000170000

William Cambell
OR287-938

Carmen Rincones
OR321-604

William Cambell
OR287-938

William Cambell
OR287-938

William Cambell
OR287-938

Mastiff Ventures LLC
OR272-467
26.93 Ac.
130000040300

Mastiff Ventures LLC
OR272-467
26.93 Ac.
130000040300

Charles Smyers
OR51-793
10.75 Ac.
NE NE Pt.
130006700000

Charles Smyers
OR51-793
10.75 Ac.
NE NE Pt.
130006700000

Charles Smyers
OR51-793
10.75 Ac.
NE NE Pt.
130006700000

Charles Smyers
OR51-793
10.75 Ac.
NE NE Pt.
130006700000

Charles Smyers
OR51-793
10.75 Ac.
NE NE Pt.
130006700000

Charles Smyers
OR51-793
10.75 Ac.
NE NE Pt.
130006700000