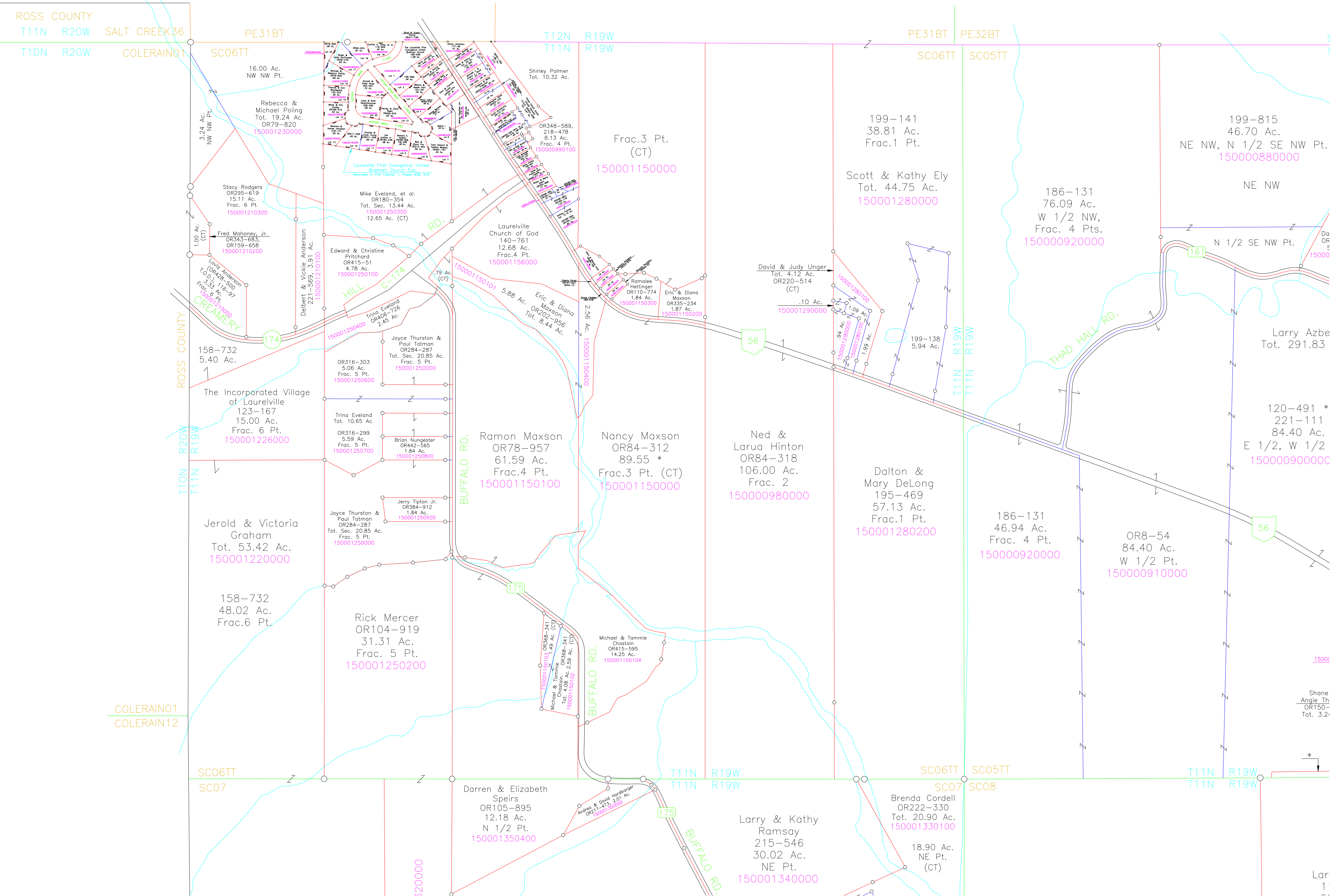


PICKAWAY COUNTY

ROSS COUNTY
T11N R20W SALT CREEK36
T10N R20W COLERAIN01



PE31BT SC06TT

T12N R19W
T11N R19W

PE31BT PE32BT
SC06TT SC05TT

16.00 Ac.
NW NW Pt.

Shirley Palmer
Tot. 10.32 Ac.

199-141
38.81 Ac.
Frac.1 Pt.

199-815
46.70 Ac.
NE NW, N 1/2 SE NW Pt.
15000880000

Rebecca & Michael Poling
Tot. 19.24 Ac.
OR79-820
150001230000

Frac.3 Pt.
(CT)
150001150000

Scott & Kathy Ely
Tot. 44.75 Ac.
150001280000

186-131
76.09 Ac.
W 1/2 NW,
Frac. 4 Pts.
150000920000

Stacy Rodgers
OR295-619
15.11 Ac.
Frac. 6 Pt.
150001210300

Mike Eveland, et al.
OR180-354
Tot. Sec. 13.44 Ac.
150001250300
12.65 Ac. (CT)

Laureville Church of God
140-761
12.68 Ac.
Frac.4 Pt.
150001156000

David & Judy Unger
Tot. 4.12 Ac.
OR220-514
(CT)

NE NW
15000

Fred Mahoney, Jr.
OR343-683,
OR159-658
150001210200

Delbert & Vickie Anderson
221-569, 3.91 Ac.
150001210100

Edward & Christine Pritchard
OR415-51
4.78 Ac.
150001250100

Laureville First Evangelical United Brethren Church, Sub
Recorded in Plat Cabinet 1, Page 808, 81A

Eric & Diana Maxson
OR202-956
Tot. 8.44 Ac.

Ramalee Hattinger
OR110-774
1.84 Ac.
150001150300

Eric & Diana Maxson
OR335-234
1.87 Ac.
150001150200

199-138
5.94 Ac.

N 1/2 SE NW Pt.
Da OR 15000

Louis Anderson
OR428-500
1.0, D.J. 116-97
3.33 Ac.
Frac. 6 Pt.
150001210000

Trina Eveland
OR406-729
2.45 Ac.
150001250400

Joyce Thurston & Paul Tatman
OR284-287
Tot. Sec. 20.85 Ac.
Frac. 5 Pt.
150001250600

Ramon Maxson
OR78-957
61.59 Ac.
Frac.4 Pt.
150001150100

Nancy Maxson
OR84-312
89.55 *
Frac.3 Pt. (CT)
150001150000

Ned & Larua Hinton
OR84-318
106.00 Ac.
Frac. 2
150000980000

Dalton & Mary DeLong
195-469
57.13 Ac.
Frac.1 Pt.
150001280200

186-131
46.94 Ac.
Frac. 4 Pt.
150000920000

Larry Azbe
Tot. 291.83

120-491 *
221-111
84.40 Ac.
E 1/2, W 1/2
150000900000

158-732
5.40 Ac.

The Incorporated Village of Laurelville
123-167
15.00 Ac.
Frac. 6 Pt.
150001226000

Trina Eveland
OR316-303
5.06 Ac.
Frac. 5 Pt.
150001250600

Brian Nungester
OR442-565
1.84 Ac.
150001250800

Ramon Maxson
OR78-957
61.59 Ac.
Frac.4 Pt.
150001150100

Nancy Maxson
OR84-312
89.55 *
Frac.3 Pt. (CT)
150001150000

Ned & Larua Hinton
OR84-318
106.00 Ac.
Frac. 2
150000980000

Dalton & Mary DeLong
195-469
57.13 Ac.
Frac.1 Pt.
150001280200

186-131
46.94 Ac.
Frac. 4 Pt.
150000920000

OR8-54
84.40 Ac.
W 1/2 Pt.
150000910000

Jerold & Victoria Graham
Tot. 53.42 Ac.
150001220000

Joyce Thurston & Paul Tatman
OR284-287
Tot. Sec. 20.85 Ac.
Frac. 5 Pt.
150001250000

Jerry Tipton Jr.
OR384-912
1.84 Ac.
150001250500

Ramon Maxson
OR78-957
61.59 Ac.
Frac.4 Pt.
150001150100

Nancy Maxson
OR84-312
89.55 *
Frac.3 Pt. (CT)
150001150000

Ned & Larua Hinton
OR84-318
106.00 Ac.
Frac. 2
150000980000

Dalton & Mary DeLong
195-469
57.13 Ac.
Frac.1 Pt.
150001280200

186-131
46.94 Ac.
Frac. 4 Pt.
150000920000

OR8-54
84.40 Ac.
W 1/2 Pt.
150000910000

158-732
48.02 Ac.
Frac.6 Pt.

Rick Mercer
OR104-919
31.31 Ac.
Frac. 5 Pt.
150001250200

Michael & Tammie Chastain
OR415-595
14.25 Ac.
150001150104

Michael & Tammie Chastain
OR415-595
14.25 Ac.
150001150104

Ned & Larua Hinton
OR84-318
106.00 Ac.
Frac. 2
150000980000

Dalton & Mary DeLong
195-469
57.13 Ac.
Frac.1 Pt.
150001280200

186-131
46.94 Ac.
Frac. 4 Pt.
150000920000

OR8-54
84.40 Ac.
W 1/2 Pt.
150000910000

Shane Angle Th
OR150-
Tot. 3.2.

SC06TT
SC07

T11N R19W
T11N R19W

SC06TT SC05TT
SC07 SC08

T11N R19W
T11N R19W

Darren & Elizabeth Speirs
OR105-895
12.18 Ac.
N 1/2 Pt.
150001350400

Larry & Kathy Ramsay
215-546
30.02 Ac.
NE Pt.
150001340000

Brenda Cordell
OR222-330
Tot. 20.90 Ac.
150001330100

18.90 Ac.
NE Pt.
(CT)