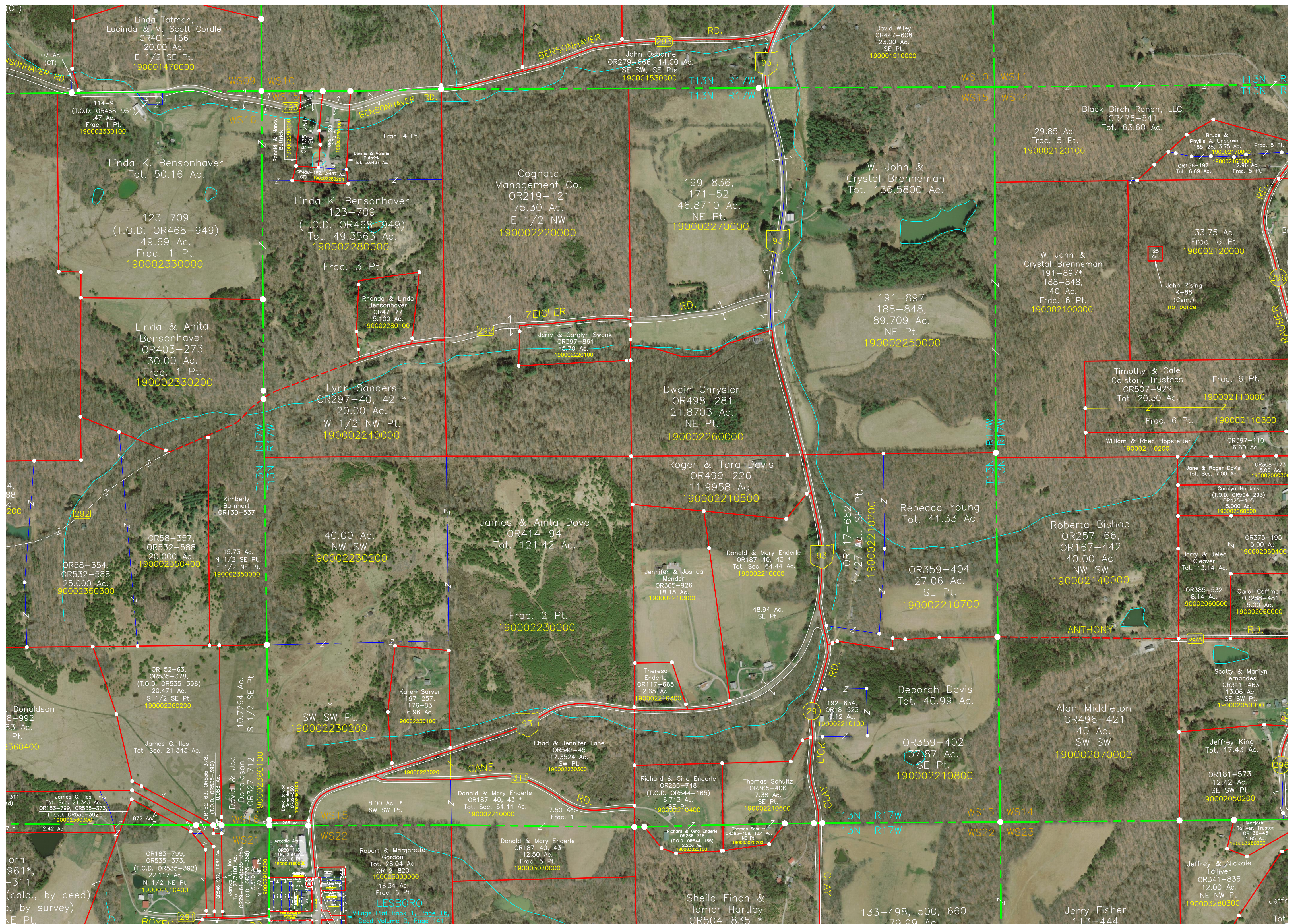


(C1)



Linda Tatman,
Lucinda & M. Scott Cordle
OR401-156
20.00 Ac.
E 1/2 SE Pt.
190001470000

Linda K. Bensonhaver
Tot. 50.16 Ac.

123-709
(T.O.D. OR468-949)
49.69 Ac.
Frac. 1 Pt.
190002330000

Linda & Anita
Bensonhaver
OR403-273
30.00 Ac.
Frac. 1 Pt.
190002330200

OR58-357,
OR532-588
20.000 Ac.
190002350400

OR152-63,
OR535-378,
(T.O.D. OR535-396)
20.471 Ac.
S 1/2 SE Pt.
190002360200

OR183-799,
OR535-373,
(T.O.D. OR535-392)
22.117 Ac.
N 1/2 NE Pt.
190002910400

Linda K. Bensonhaver
123-709
(T.O.D. OR468-949)
Tot. 49.3563 Ac.
190002280000

Lynn Sanders
OR297-40, 42 *
20.00 Ac.
W 1/2 NW Pt.
190002240000

40.00 Ac.
NW SW
190002230200

SW SW Pt.
190002230200

Robert & Margarette
Gordon
Tot. 28.04 Ac.
OR12-820
190003000000

Cognate
Management Co.
OR219-121
75.30 Ac.
E 1/2 NW
190002220000

James & Anita Dove
OR414-94
Tot. 121.42 Ac.

Frac. 2 Pt.
190002230000

Donald & Mary Enderle
OR187-40, 43 *
Tot. Sec. 64.44 Ac.
190002210000

Donald & Mary Enderle
OR187-40, 43
12.50 Ac.
Frac. 5 Pt.
190003020000

John Osborne
OR279-666, 14.00 Ac.
SE SW, SE Pts.
190001530000

199-836,
171-52
46.8710 Ac.
NE Pt.
190002270000

Jeffrey & Carolyn Swank
OR397-861
15.70 Ac.
190002201000

Dwain Chrysler
OR498-281
21.8703 Ac.
NE Pt.
190002260000

Roger & Tara Davis
OR499-226
11.9958 Ac.
190002210500

Jennifer & Joshua
Mender
OR365-926
18.15 Ac.
190002210300

Theresa
Enderle
OR117-665
2.65 Ac.
190002210300

Richard & Gina Enderle
OR266-748
(T.O.D. OR544-165)
6.713 Ac.
190002210400

Richard & Gina Enderle
OR266-748
(T.O.D. OR544-165)
2.206 Ac.
190003020100

David Wiley
OR447-608
23.00 Ac.
SE Pt.
190001510000

W. John &
Crystal Brenneman
Tot. 136.5800 Ac.

191-897
188-848,
89.709 Ac.
NE Pt.
190002250000

Rebecca Young
Tot. 41.33 Ac.

Donald & Mary Enderle
OR187-40, 43 *
Tot. Sec. 64.44 Ac.
190002210000

Deborah Davis
Tot. 40.99 Ac.

OR359-402
37.87 Ac.
SE Pt.
190002210800

Thomas Schultz
OR365-406
7.38 Ac.
SE Pt.
190002210600

Thomas Schultz
OR365-406, 1.51 Ac.
NE Pt.
190003020200

Black Birch Ranch, LLC
OR476-541
Tot. 63.60 Ac.

29.85 Ac.
Frac. 5 Pt.
190002120100

W. John &
Crystal Brenneman
191-897*
188-848,
40 Ac.
Frac. 6 Pt.
190002100000

Timothy & Gale
Colston, Trustees
OR507-929
Tot. 20.50 Ac.
Frac. 6 Pt.
190002110000

William & Rhea Hopstetter
OR397-110
6.60 Ac.

Jane & Roger Davis
OR308-173
5.00 Ac.
190002060300

Carolyn Hopkins
(T.O.D. OR504-293)
OR425-405
5.000 Ac.
190002060600

OR375-195
5.00 Ac.
190002060400

Barry & Jelea
Cleaver
Tot. 13.14 Ac.

OR385-532
8.14 Ac.
190002060500

Carol Coffman
OR288-481
5.00 Ac.
190002060000

Scotty & Marilyn
Fernandes
OR311-463
13.06 Ac.
SE SW Pt.
190002050000

Alan Middleton
OR496-421
40 Ac.
SW SW
190002070000

Jeffrey King
Tot. 17.43 Ac.

OR181-573
12.42 Ac.
SE SW Pt.
190002050200

Bruce &
Phyllis A. Underwood
165-28, 3.75 Ac.
Frac. 5 Pt.
190002170000

OR156-197
Tot. 6.69 Ac.

John Rising
K-88
(Cem.)
no parcel

William & Rhea Hopstetter
OR397-110
6.60 Ac.

Jane & Roger Davis
OR308-173
5.00 Ac.
190002060300

Carolyn Hopkins
(T.O.D. OR504-293)
OR425-405
5.000 Ac.
190002060600

OR375-195
5.00 Ac.
190002060400

Barry & Jelea
Cleaver
Tot. 13.14 Ac.

OR385-532
8.14 Ac.
190002060500

Carol Coffman
OR288-481
5.00 Ac.
190002060000

Scotty & Marilyn
Fernandes
OR311-463
13.06 Ac.
SE SW Pt.
190002050000

Alan Middleton
OR496-421
40 Ac.
SW SW
190002070000

Jeffrey King
Tot. 17.43 Ac.

OR181-573
12.42 Ac.
SE SW Pt.
190002050200

Marjorie
Tolliver, Trustee
OR136-46
1.85 Ac.
190003280200

Jeffrey & Nickole
Tolliver
OR341-835
12.00 Ac.
NE NW Pt.
190003280300

Black Birch Ranch, LLC
OR476-541
Tot. 63.60 Ac.

29.85 Ac.
Frac. 5 Pt.
190002120100

W. John &
Crystal Brenneman
191-897*
188-848,
40 Ac.
Frac. 6 Pt.
190002100000

Timothy & Gale
Colston, Trustees
OR507-929
Tot. 20.50 Ac.
Frac. 6 Pt.
190002110000

William & Rhea Hopstetter
OR397-110
6.60 Ac.

Jane & Roger Davis
OR308-173
5.00 Ac.
190002060300

Carolyn Hopkins
(T.O.D. OR504-293)
OR425-405
5.000 Ac.
190002060600

OR375-195
5.00 Ac.
190002060400

Barry & Jelea
Cleaver
Tot. 13.14 Ac.

OR385-532
8.14 Ac.
190002060500

Carol Coffman
OR288-481
5.00 Ac.
190002060000

Scotty & Marilyn
Fernandes
OR311-463
13.06 Ac.
SE SW Pt.
190002050000

Alan Middleton
OR496-421
40 Ac.
SW SW
190002070000

Jeffrey King
Tot. 17.43 Ac.

OR181-573
12.42 Ac.
SE SW Pt.
190002050200

Marjorie
Tolliver, Trustee
OR136-46
1.85 Ac.
190003280200

Bruce &
Phyllis A. Underwood
165-28, 3.75 Ac.
Frac. 5 Pt.
190002170000

OR156-197
Tot. 6.69 Ac.

John Rising
K-88
(Cem.)
no parcel

William & Rhea Hopstetter
OR397-110
6.60 Ac.

Jane & Roger Davis
OR308-173
5.00 Ac.
190002060300

Carolyn Hopkins
(T.O.D. OR504-293)
OR425-405
5.000 Ac.
190002060600

OR375-195
5.00 Ac.
190002060400

Barry & Jelea
Cleaver
Tot. 13.14 Ac.

OR385-532
8.14 Ac.
190002060500

Carol Coffman
OR288-481
5.00 Ac.
190002060000

Scotty & Marilyn
Fernandes
OR311-463
13.06 Ac.
SE SW Pt.
190002050000

Alan Middleton
OR496-421
40 Ac.
SW SW
190002070000

Jeffrey King
Tot. 17.43 Ac.

OR181-573
12.42 Ac.
SE SW Pt.
190002050200

Marjorie
Tolliver, Trustee
OR136-46
1.85 Ac.
190003280200

Jeffrey & Nickole
Tolliver
OR341-835
12.00 Ac.
NE NW Pt.
190003280300