

UR30-634
Tot. 33.44 Ac.
080003570000

TOT. 18.91 AC.
16.02 Ac.
SW Pt.
080003560000
David & Carol Seely
OR514-453
5.000 Ac.
080003560100
Charles Warthman
OR272-118
1.87 Ac.
Edward, Ted & Ned Shelpman
OR131-229, 3,4195 Ac.
080003540000
2.89 Ac.
SE SW Pt.
080003540000

080003630000
Geoffrey Blossom
OR406-40
Tot. 20.81 Ac.
20.66 Ac.
SE SE Pt.
080003620200

89-457
41.00 Ac.
NE NE

Falls Mill Enterprises, Inc.
OR30-634
40.00 Ac.
NW NW
080003780000

State Of Ohio
Tot. Sec. 241.88 Ac.
080003685000

109-155
75.00 Ac.
NE NW Pt.
NW NE Pt.

Geoffrey Blossom
OR406-40
Tot. 77.89 Ac.
080003840000

40.00 Ac.
NE NE
(CT)

199-472
160.00 Ac.
S 1/2 NE
N 1/2 SE Pt.

OR377-26,
186-689
39.87 Ac.
SW NW Pt.

109-155
40.00 Ac.
SE NW

Larry Knapp
OR487-187
1.70 Ac.
080003810000

Gary & Janice Mead
OR422-404
5.27 Ac.
080003680100

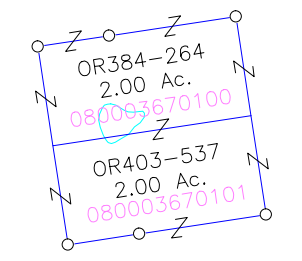
37.89 Ac.
SE NE Pt.

Bradley Rider
186-528
.13 Ac.
(Anderson Cem.)
080003676000

John & Mary Lanning
OR54-574
5.00 Ac.
080003680101

Billy Joe Deck, OR516-808 (1/6th)
Cheryl Peters, OR514-545 (1/3rd)
Adam & Sharon Musial, OR492-871 (1/6th)
Karen E. Nesbitt, OR476-532 (1/6th)
Adam C. Musial, OR366-25* (1/6th*)
Tot. 33.35 Ac.
080003890000

Coatney-Stauffer
Ventures, LLC.
OR436-864
0.49 Ac.
080003850000



109-155
5.16 Ac.
NE SW Pt.

OR377-26,
184-521
8.00 Ac. *
NE SW Pt.

OR377-26,
184-521
26.00 Ac. *
Frac. 9 Pt.

OR377-26,
184-521
5.00 Ac. *
Frac. 10

080003770000
Charles & Judy
Kline
170-214
13.12 Ac.
Frac. 3 Pt.

N 1/2 SE Pt.

Valerie Stichter
Tot. 142.87 Ac.
080003670000

State Of Ohio
Tot. Sec. 241.88 Ac.

110-146
52.72 Ac.
SE Pt.

OR244-807,
204-44,
208-291
3.10 Ac.
Frac. 5
080003730000
OR244-807,
208-291
Frac. 3 Pt.
080003760000
Trustees M. E.
Church, 18-437
080003760000

OR244-807,
208-291
12.50 Ac.
Frac. 1
080003760000

Keith & Colleen Roeth
OR130-122
Tot. Sec. 48.20 Ac.
41.00 Ac.
SE SE
080003860000

110-146
40.00 Ac.
SE SW

Charles Kline *
Tot. 49.51 Ac.

OR244-807,
208-291
29.75 Ac.
Frac. 2
080003760000

Keith & Colleen Roeth
OR130-122
47.80 Ac.
N1/2 NE1/4
080004530000

OR549-542, 545
31.0100 Ac.
NW NW Pt.

Mark Slivka &
Orthoforce, Inc.
OR513-883
41.51 Ac.
NF NW

110-144
40.00 Ac.
NW NE

110-144
40.00 Ac.
NW NE

WS06
WS07