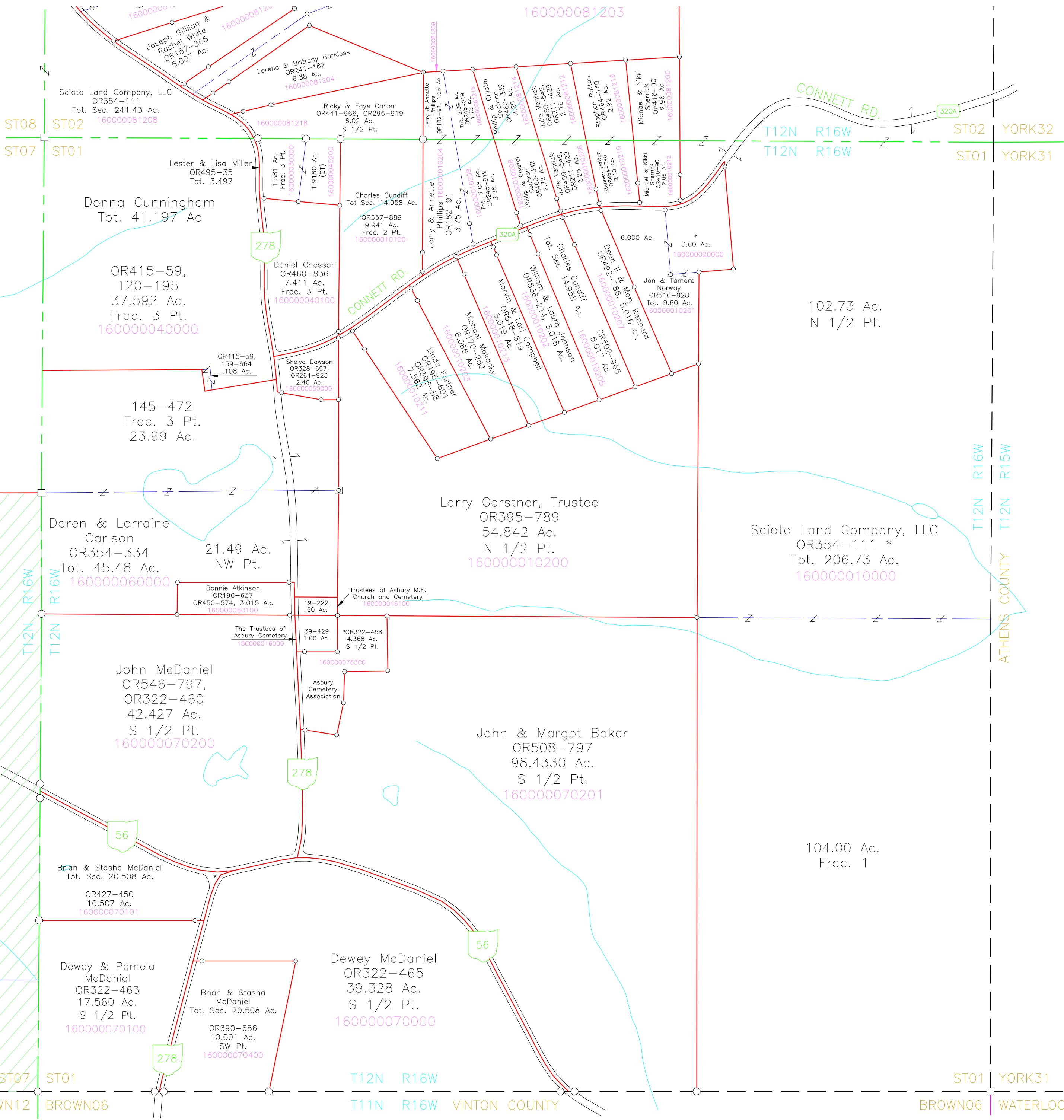


OR354-111  
81.81 Ac.  
S 1/2 SE Pt.  
160000860100



Scioto Land Company, LLC  
OR354-111  
Tot. Sec. 241.43 Ac.  
16000081208

Donna Cunningham  
Tot. 41.197 Ac

OR415-59,  
120-195  
37.592 Ac.  
Frac. 3 Pt.  
16000040000

145-472  
Frac. 3 Pt.  
23.99 Ac.

Daren & Lorraine  
Carlson  
OR354-334  
Tot. 45.48 Ac.  
16000060000

Bonnie Atkinson  
OR496-637  
OR450-574, 3,015 Ac.  
16000060100

John McDaniel  
OR546-797,  
OR322-460  
42.427 Ac.  
S 1/2 Pt.  
16000070200

Brian & Stasha McDaniel  
Tot. Sec. 20.508 Ac.  
OR427-450  
10.507 Ac.  
16000070101

Dewey & Pamela  
McDaniel  
OR322-463  
17.560 Ac.  
S 1/2 Pt.  
16000070100

Brian & Stasha  
McDaniel  
Tot. Sec. 20.508 Ac.  
OR390-656  
10,001 Ac.  
SW Pt.  
16000070400

Dewey McDaniel  
OR322-465  
39.328 Ac.  
S 1/2 Pt.  
16000070000

Larry Gerstner, Trustee  
OR395-789  
54.842 Ac.  
N 1/2 Pt.  
16000010200

John & Margot Baker  
OR508-797  
98.4330 Ac.  
S 1/2 Pt.  
16000070201

102.73 Ac.  
N 1/2 Pt.

Scioto Land Company, LLC  
OR354-111 \*  
Tot. 206.73 Ac.  
16000010000

104.00 Ac.  
Frac. 1

Scioto Land Company, LLC  
OR354-111  
140.98 Ac.  
Frac. 6 Pt.  
160000790000

ST08 ST02  
ST07 ST01  
BROWN12 BROWN06

T12N R16W  
T11N R16W  
VINTON COUNTY

ST01 YORK31  
BROWN06 WATERLOO36  
T12N R15W  
T11N R15W

T12N R16W  
T12N R15W  
ATHENS COUNTY

T11N R16W  
T11N R15W