

1,
61,
42,
41*,
72
Ac.
Pts.
0000

B
Park
ment
nd 13)
213
in
sion

3
0
2
0

2
0

020001500500

OR43-549,
209-532
5.03 Ac.
Frac. 8 Pt.

020001500600

Bryan & Anne
Tier
OR117-333
2.50 Ac.

020001500301

Paul & Cindy Taulbee, Trustees
OR483-925
3.0509 Ac.
Frac. 8 Pt.
020001500200

2.00 Ac.
020001500201

Keithel Dingus &
Monica Frank
OR527-442
Tot. 6.63689 Ac.

4.63689 Ac.
Frac. 8 Pt.
020001500000

Michael Smith
203-171
3.39 Ac.
Frac. 8 Pt.
020001500300

James & Christina
O'Conner, OR555-15
1.77557 Ac.
020001500400

Kathryn Martin
OR478-481
Tot. 0.731 Ac.
0.606 Ac.
Lot 12
020017350000

Mallory & Douglas
Cherryholmes
OR562-725
0.706 Ac.
Lot 13
020017360000

Neil & Myrtle Caughenbaugh
OR402-591
0.4963 Ac.
Lot 16
020017250000

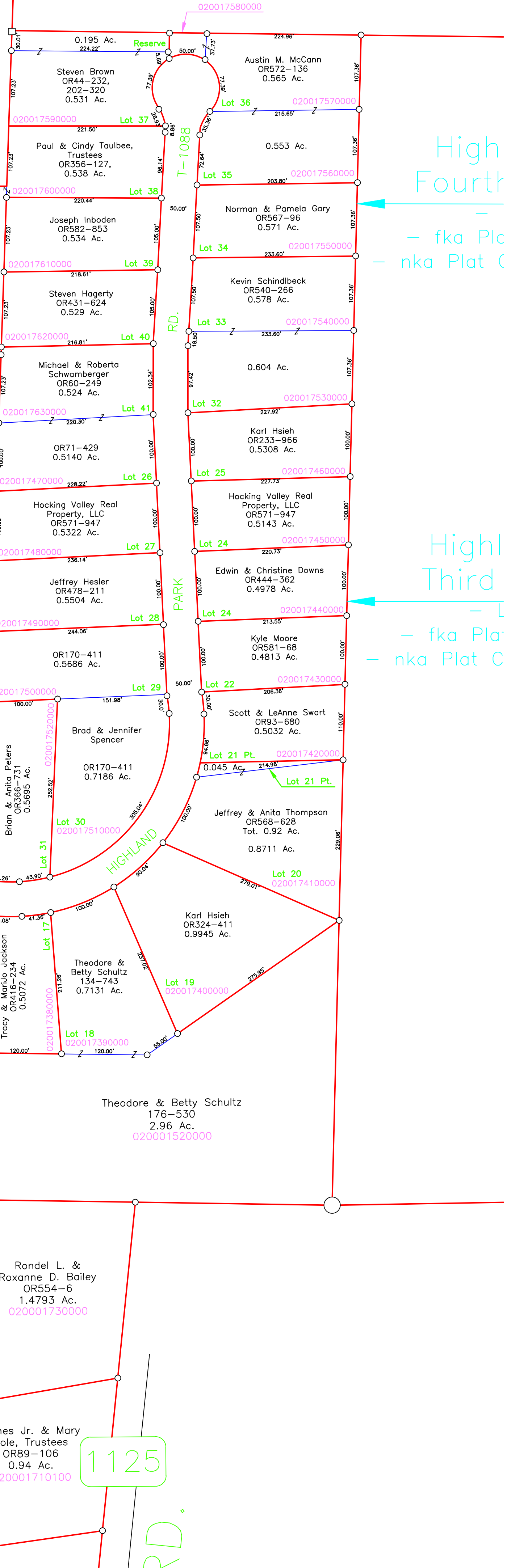
Charles & Renee Williams
OR238-167
0.63 Ac.
Lot 14
020017200000

Eric R. & Martha E. Smith
OR587-882
0.57 Ac.
Lot 13
020017190000

Mark Fuller
OR550-615
0.57 Ac.
Lot 12
020017180000

Roger & Nancy Brislinger,
Trustees
OR198-770
0.57 Ac.
Lot 11
020017170000

id Park
irst Allotment
ts 15 and 16 revised)
ook C, Pg. 40
net 1, Pg. 55 B
Plat of
5 and 16 in
k Subdivision
& 16 revised
ook D, Pg. 33
net 1, Pg. 83 A



High Fourth
- fka Plat
- nka Plat C

High Third
- fka Plat
- nka Plat C

1125