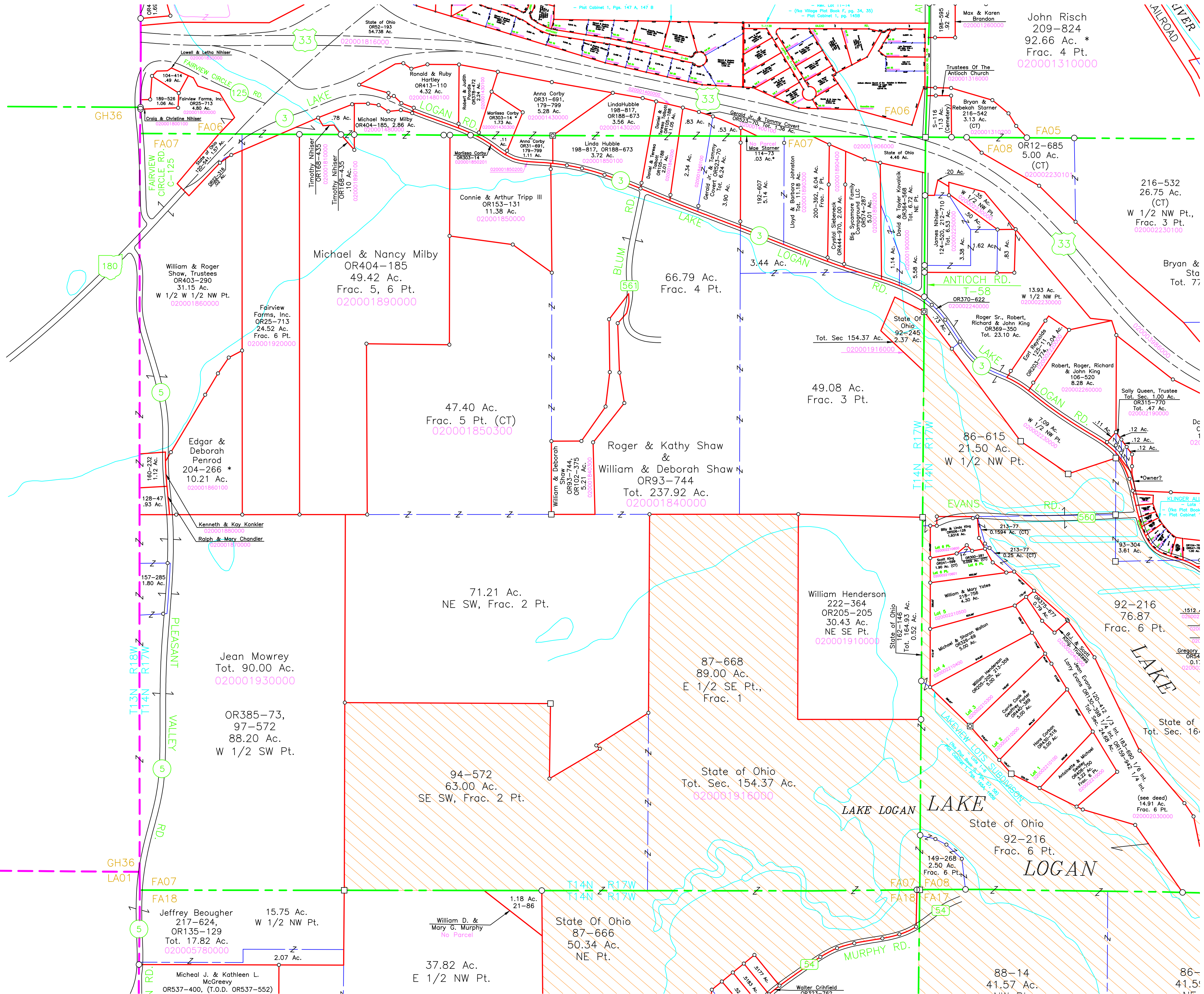


John Risch
209-824
92.66 Ac. *
Frac. 4 Pt.
020001310000



Michael & Nancy Milby
OR404-185, 2.86 Ac.
020001890000

Michael & Nancy Milby
OR404-185
49.42 Ac.
Frac. 5, 6 Pt.
020001890000

Edgar & Deborah Penrod
204-266 *
10.21 Ac.
020001860100

Jean Mowrey
Tot. 90.00 Ac.
020001930000

OR385-73,
97-572
88.20 Ac.
W 1/2 SW Pt.

Jeffrey Beougher
217-624,
OR135-129
Tot. 17.82 Ac.
020005780000

15.75 Ac.
W 1/2 NW Pt.

Micheal J. & Kathleen L. McGreevy
OR537-400, (T.O.D. OR537-552)

47.40 Ac.
Frac. 5 Pt. (CT)
020001850300

William & Deborah Shaw
OR93-744,
OR102-375
5.21 Ac.
020001840300

Roger & Kathy Shaw &
William & Deborah Shaw
OR93-744
Tot. 237.92 Ac.
020001840000

71.21 Ac.
NE SW, Frac. 2 Pt.

94-572
63.00 Ac.
SE SW, Frac. 2 Pt.

37.82 Ac.
E 1/2 NW Pt.

66.79 Ac.
Frac. 4 Pt.

49.08 Ac.
Frac. 3 Pt.

87-668
89.00 Ac.
E 1/2 SE Pt.,
Frac. 1

State of Ohio
Tot. Sec. 154.37 Ac.
020001916000

State Of Ohio
87-666
50.34 Ac.
NE Pt.

OR12-685
5.00 Ac.
(CT)
020002230100

86-615
21.50 Ac.
W 1/2 NW Pt.

92-216
76.87
Frac. 6 Pt.

State of Ohio
92-216
Frac. 6 Pt.
LOGAN

88-14
41.57 Ac.

216-532
26.75 Ac.
(CT)
W 1/2 NW Pt.,
Frac. 3 Pt.
020002230100

Bryan & Sta
Tot. 77

Sally Queen, Trustee
Tot. Sec. 1.00 Ac.
OR315-770
Tot. 47 Ac.
020002190000

Gregory
OR54
0.1
020002030000

State of
Tot. Sec. 16

(see deed)
14.91 Ac.
Frac. 6 Pt.
020002030000

86-
41.5