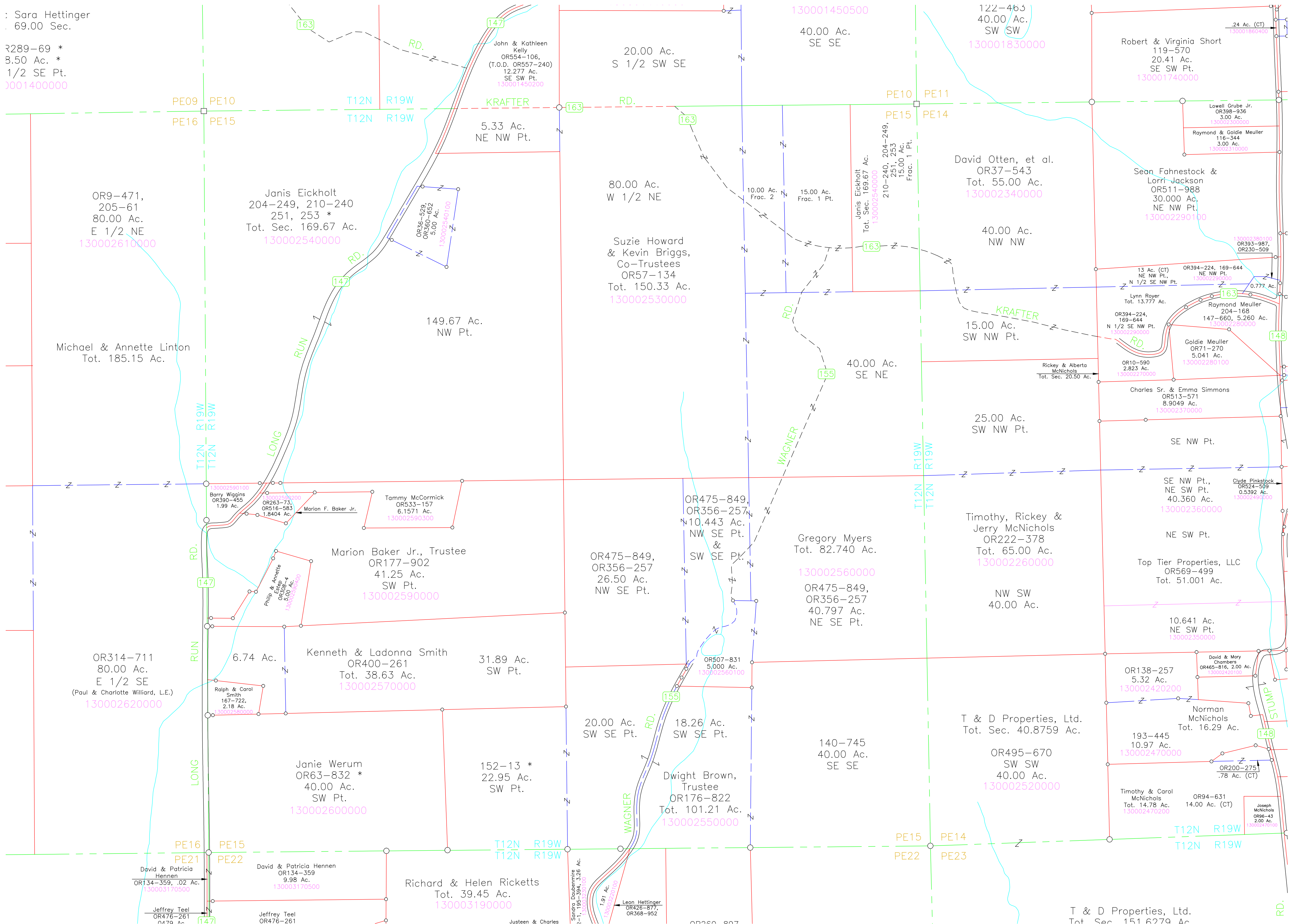


: Sara Hettinger  
.69.00 Sec.

R289-69 \*  
3.50 Ac. \*  
1/2 SE Pt.  
1300140000



OR9-471,  
205-61  
80.00 Ac.  
E 1/2 NE  
130002610000

Janis Eickholt  
204-249, 210-240  
251, 253 \*  
Tot. Sec. 169.67 Ac.  
130002540000

Michael & Annette Linton  
Tot. 185.15 Ac.

5.33 Ac.  
NE NW Pt.

80.00 Ac.  
W 1/2 NE

Suzie Howard  
& Kevin Briggs,  
Co-Trustees  
OR57-134  
Tot. 150.33 Ac.  
130002530000

149.67 Ac.  
NW Pt.

40.00 Ac.  
SE NE

David Otten, et al.  
OR37-543  
Tot. 55.00 Ac.  
130002340000

40.00 Ac.  
NW NW

15.00 Ac.  
SW NW Pt.

Sean Fahnestock &  
Lorri Jackson  
OR511-988  
30.000 Ac.  
NE NW Pt.  
130002290100

Raymond & Goldie Mueller  
116-344  
3.00 Ac.  
130002310000

Goldie Mueller  
OR71-270  
5.041 Ac.  
130002280100

Charles Sr. & Emma Simmons  
OR513-571  
8.9049 Ac.  
130002370000

SE NW Pt.

Clyde Pinkstock  
OR524-509  
0.5392 Ac.  
130002490000

SE NW Pt.,  
NE SW Pt.  
40.360 Ac.  
130002360000

Top Tier Properties, LLC  
OR569-499  
Tot. 51.001 Ac.

10.641 Ac.  
NE SW Pt.  
130002350000

David & Mary  
Chambers  
OR465-816, 2.00 Ac.  
130002420100

Norman  
McNichols  
Tot. 16.29 Ac.

193-445  
10.97 Ac.  
130002470000

Timothy & Carol  
McNichols  
Tot. 14.78 Ac.  
130002470200

Joseph  
McNichols  
OR96-43  
2.00 Ac.  
130002470100

T & D Properties, Ltd.  
Tot. Sec. 151.6279 Ac.

David & Patricia  
Hennen  
OR134-359, .02 Ac.  
130003170500

David & Patricia Hennen  
OR134-359  
9.98 Ac.  
130003170500

Richard & Helen Ricketts  
Tot. 39.45 Ac.  
130003190000

Jeffrey Teel  
OR476-261  
0.47 Ac.  
130003170500

Jeffrey Teel  
OR476-261

Justeen & Charles

Sandra Daubenmire  
2-1, 195-394, 3.26 Ac.  
130003200100

Leon Hettinger  
OR426-877,  
OR368-952

OR260-807