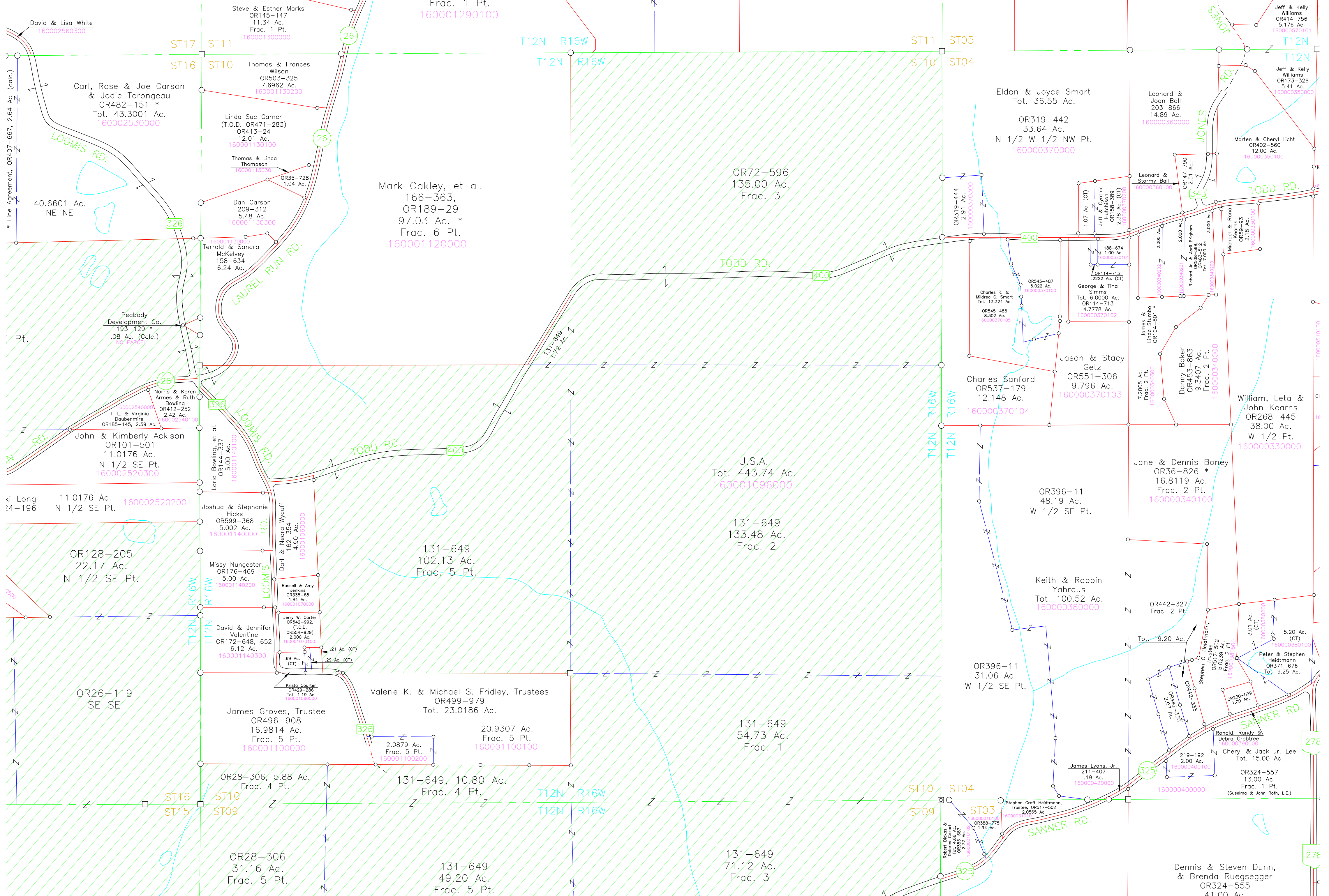


1/2 SE Pt.
302560200



David & Lisa White
160002560300

Carl, Rose & Joe Carson
& Jodie Torongeau
OR482-151 *
Tot. 43.3001 Ac.
160002530000

Peabody Development Co.
193-129 *
.08 Ac. (Calc.)
160002540100

John & Kimberly Ackison
OR101-501
11.0176 Ac.
N 1/2 SE Pt.
160002520300

OR128-205
22.17 Ac.
N 1/2 SE Pt.
160002520200

OR26-119
SE SE

OR28-306, 5.88 Ac.
Frac. 4 Pt.

OR28-306
31.16 Ac.
Frac. 5 Pt.

Steve & Esther Marks
OR145-147
11.34 Ac.
Frac. 1 Pt.
160001300000

Thomas & Frances Wilson
OR503-325
7.6962 Ac.
160001130200

Linda Sue Garner
(T.O.D. OR471-283)
OR413-24
12.01 Ac.
160001130100

Thomas & Linda Thompson
OR35-728
1.04 Ac.
160001130300

Dan Carson
209-312
5.48 Ac.
160001130300

Terrold & Sandra McKelvey
158-634
6.24 Ac.
160001130900

Norris & Karen Armes & Ruth Bowling
OR412-252
2.42 Ac.
160002540100

Joshua & Stephanie Hicks
OR599-368
5.002 Ac.
160001140000

Missy Nungester
OR176-469
5.00 Ac.
160001140200

Mark & Virginia Puhl
188-61
33.67 Ac.
Frac. 1 Pt.
160001290100

Mark Oakley, et al.
166-363,
OR189-29
97.03 Ac. *
Frac. 6 Pt.
160001120000

131-649
102.13 Ac.
Frac. 5 Pt.

Valerie K. & Michael S. Fridley, Trustees
OR499-979
Tot. 23.0186 Ac.

James Groves, Trustee
OR496-908
16.9814 Ac.
Frac. 5 Pt.
160001100000

OR28-306, 10.80 Ac.
Frac. 4 Pt.

OR28-306
49.20 Ac.
Frac. 5 Pt.

29.53 Ac. *
Frac. 1 Pt.

OR72-596
135.00 Ac.
Frac. 3

U.S.A.
Tot. 443.74 Ac.
160001096000

131-649
133.48 Ac.
Frac. 2

131-649
54.73 Ac.
Frac. 1

131-649
71.12 Ac.
Frac. 3

Eldon & Joyce Smart
Tot. 36.55 Ac.
OR319-442
33.64 Ac.
N 1/2 W 1/2 NW Pt.
160000370000

Charles R. & Mildred C. Smart
Tot. 13.324 Ac.
OR545-487
5.022 Ac.
160000370100

Charles Sanford
OR537-179
12.148 Ac.
160000370104

OR396-11
31.06 Ac.
W 1/2 SE Pt.

OR396-11
48.19 Ac.
W 1/2 SE Pt.

OR396-11
100.52 Ac.
160000380000

34.824 Ac.
Frac. 3 Pt.

Leonard & Joan Ball
203-866
14.89 Ac.
160000360000

James & Leta Kears
OR59-83
2.18 Ac.
160000340000

Jane & Dennis Boney
OR36-826 *
16.8119 Ac.
Frac. 2 Pt.
160000340100

Keith & Robbin Yahraus
Tot. 100.52 Ac.
160000380000

OR442-327
Frac. 2 Pt.

OR230-539
1.00 Ac.
160000400100

Dennis & Steven Dunn,
& Brenda Ruegsegger
OR324-555
41.00 Ac.

Jeff & Kelly Williams
OR414-756
5.176 Ac.
160000570101

Jeff & Kelly Williams
OR173-326
5.41 Ac.
160000350000

Morten & Cheryl Licht
OR402-560
12.00 Ac.
160000350100

William, Leta & John Kears
OR268-445
38.00 Ac.
W 1/2 Pt.
160000330000

Peter & Stephen Heidmann
OR371-676
Tot. 9.25 Ac.

Cheryl & Jack Jr. Lee
Tot. 15.00 Ac.

OR324-557
13.00 Ac.
Frac. 1 Pt.
(Suselma & John Roth, LE)