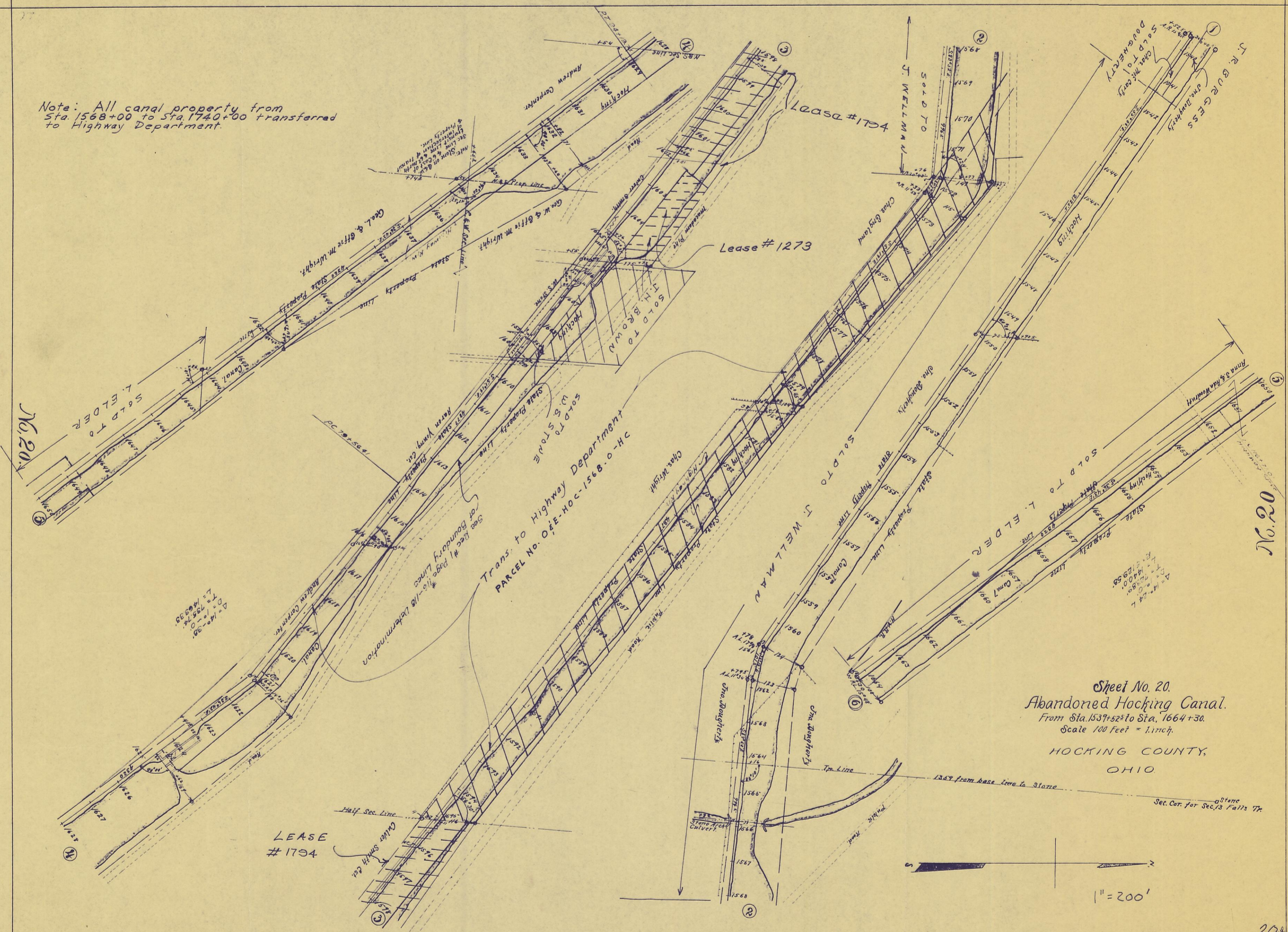


Note: All canal property from Sta. 1568+00 to Sta. 1740+00 transferred to Highway Department.



Sheet No. 20.  
 Abandoned Hocking Canal.  
 From Sta. 1537+52 to Sta. 1664+30.  
 Scale 100 Feet = 1 inch.  
 HOCKING COUNTY,  
 OHIO

Stone  
 Sec. Cor. for Sec. 13 Falls Tr.

1" = 200'