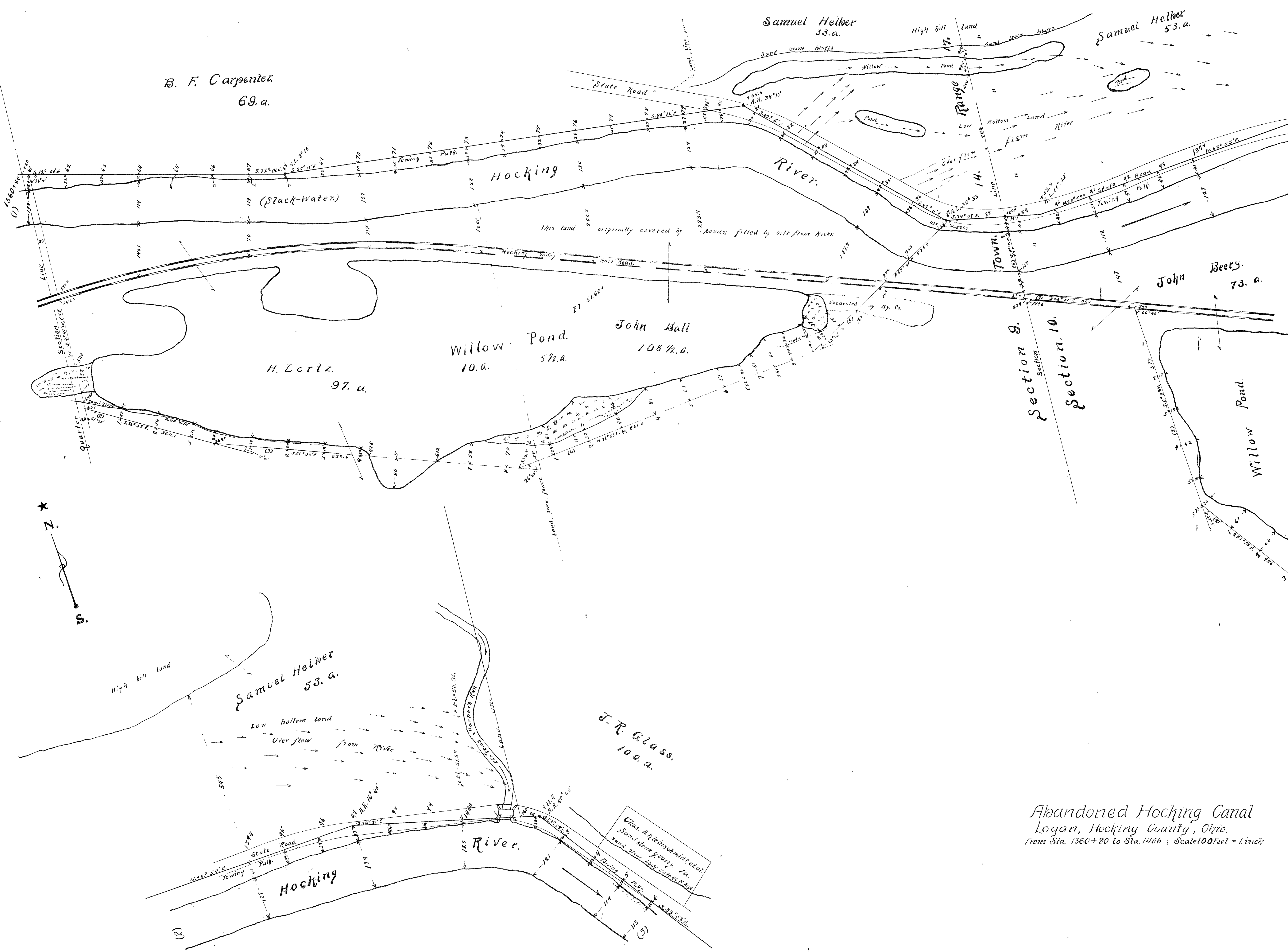


B. F. Carpenter.
69. a.

Samuel Helber
33. a.

Samuel Helber
53. a.

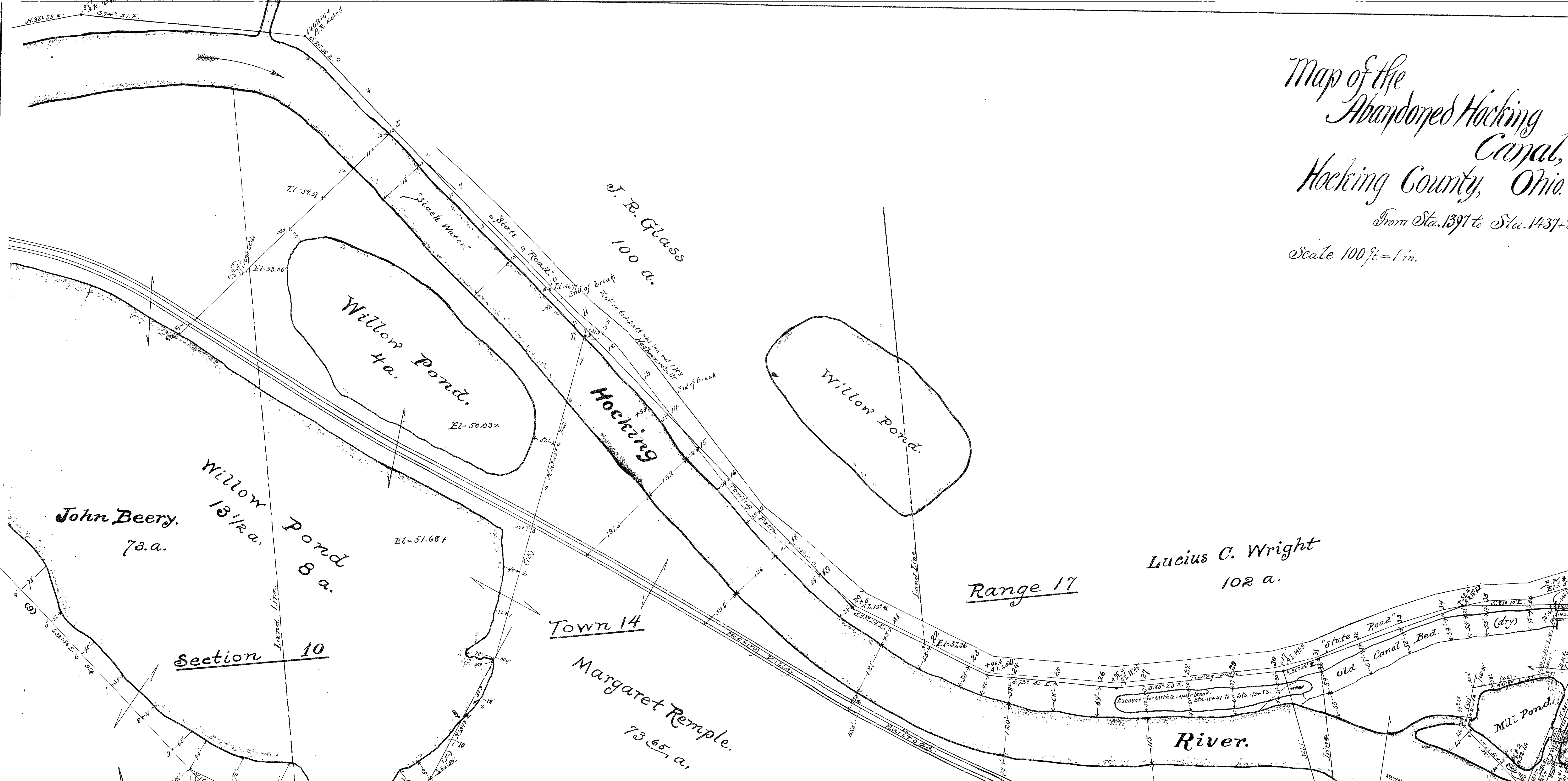


Abandoned Hocking Canal
Logan, Hocking County, Ohio.
From Sta. 1360+80 to Sta. 1406 | Scale 100 feet = 1 inch

Map of the Abandoned Hocking Canal, Hocking County, Ohio

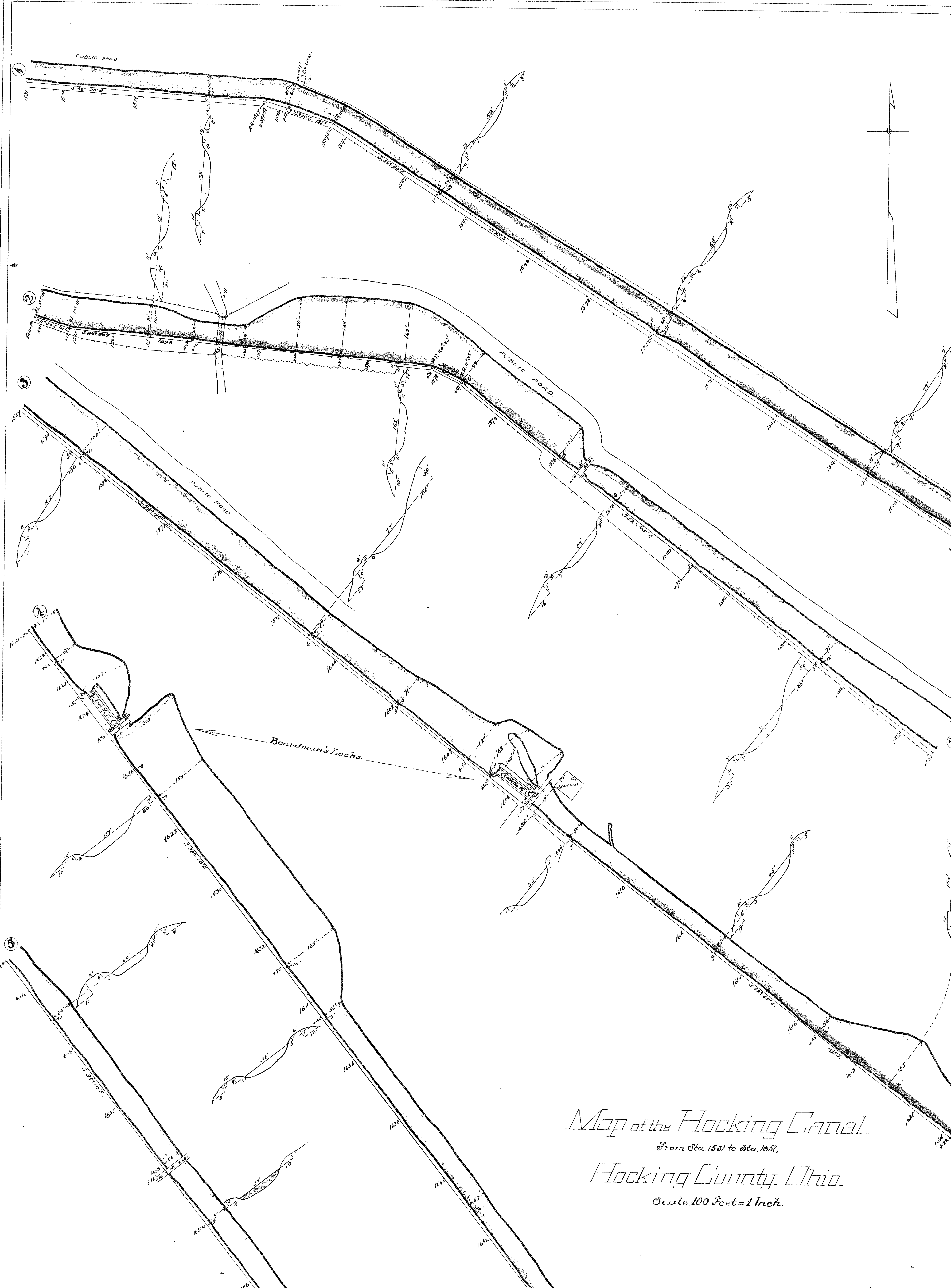
From Sta. 1397 to Sta. 1437+8

Scale 100 ft. = 1 in.

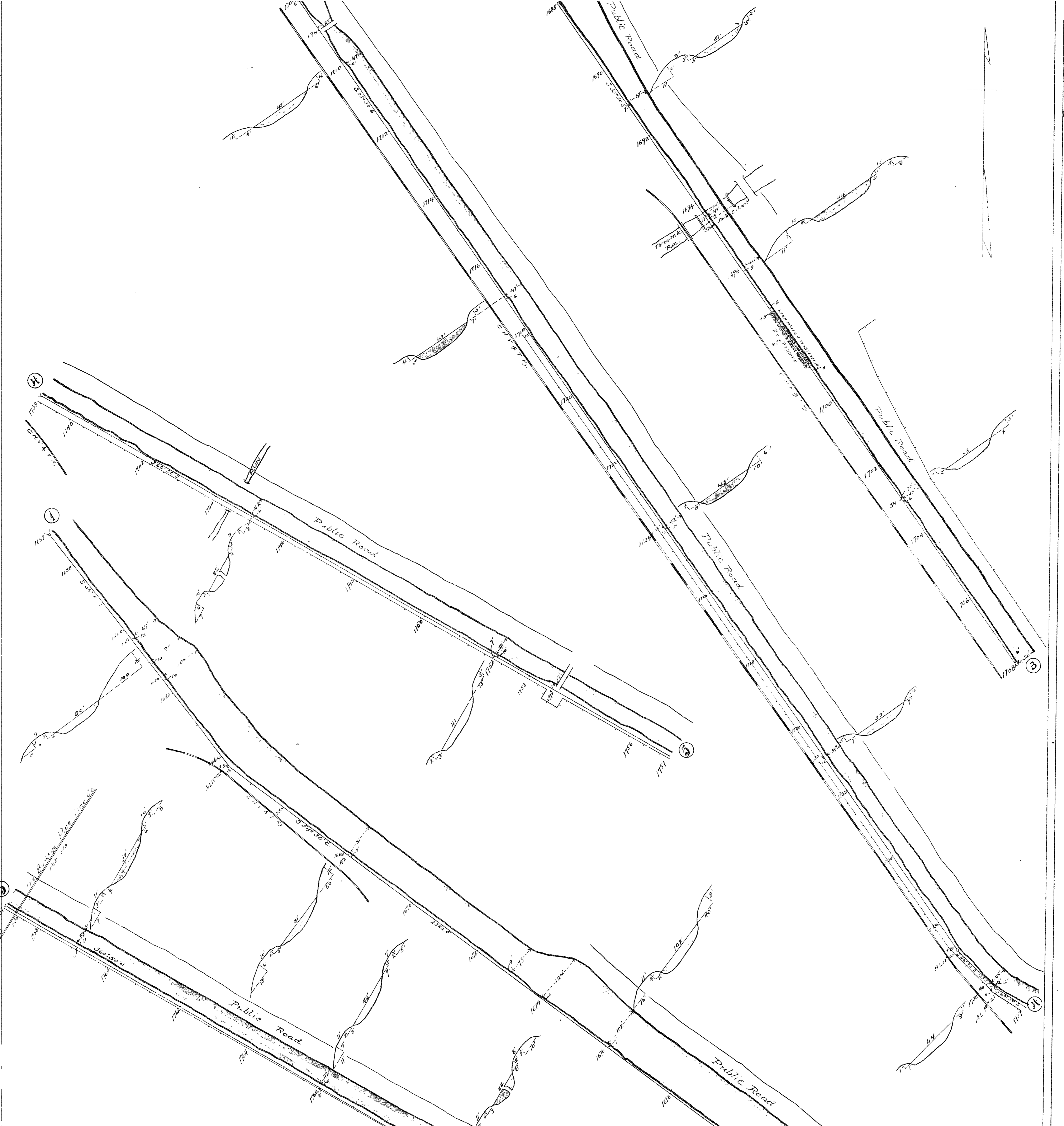


Levels taken on Hocking Canal. March 23rd 1911.

Location	Elevate	Description
Top Dam	50.00	Original height "State Dam" in Hocking River. See above plat.
B. M. # 1	55.29	Top concrete foundation, grist mill, $\frac{1}{2}$ east of N.W. corner of mill.
" " 2	58.19	Top stone coping at E. corner of N. abutment to State Dam. + cut in stone.
" " 3	58.30	" " " " " " " " " " " " + " " "
" " 4	54.75	+ cut on top stone coping. E. ring of N. bridge abut. at s. s. $\frac{1}{2}$ 1' E. of N.W. corner of mill.
" " 5	57.42	Top stone foundation. S.E. corner. 2 S.E. Res. near Lock 15.
" " 8	58.13	+ cut in coping stone. S.W. corner of left wall at head of Lock 15.
River	49.97	surface of water in Hocking River at 100' above "State Dam.
" "	50.00	" " " " " " " " " " Sta. 1416.
" "	50.03	" " " " " " " " " " 1401. "Harpers Run"
Pond	51.60	" " " " Willow pond (C.H. Lantz & John Ball)
" "	51.68	" " " " " " (John Beery & M. Remple)
" "	50.03	" " " " " " 4 a. M. Remple.
Ground	53.06	" " " " Ground. R. 470' from Sta. 1405 near oak tree.
" "	54.37	" " " " " " 230 " " " " " "
" "	51.55	" " " " " " 1400 " " 1400 on Samuel Helber land.
" "	52.38	" " " " " " 300 " " " " " "
Ton Path	57.36	Top of toning path at Sta. 1422.
" "	56.77	" " " " " " 1410.



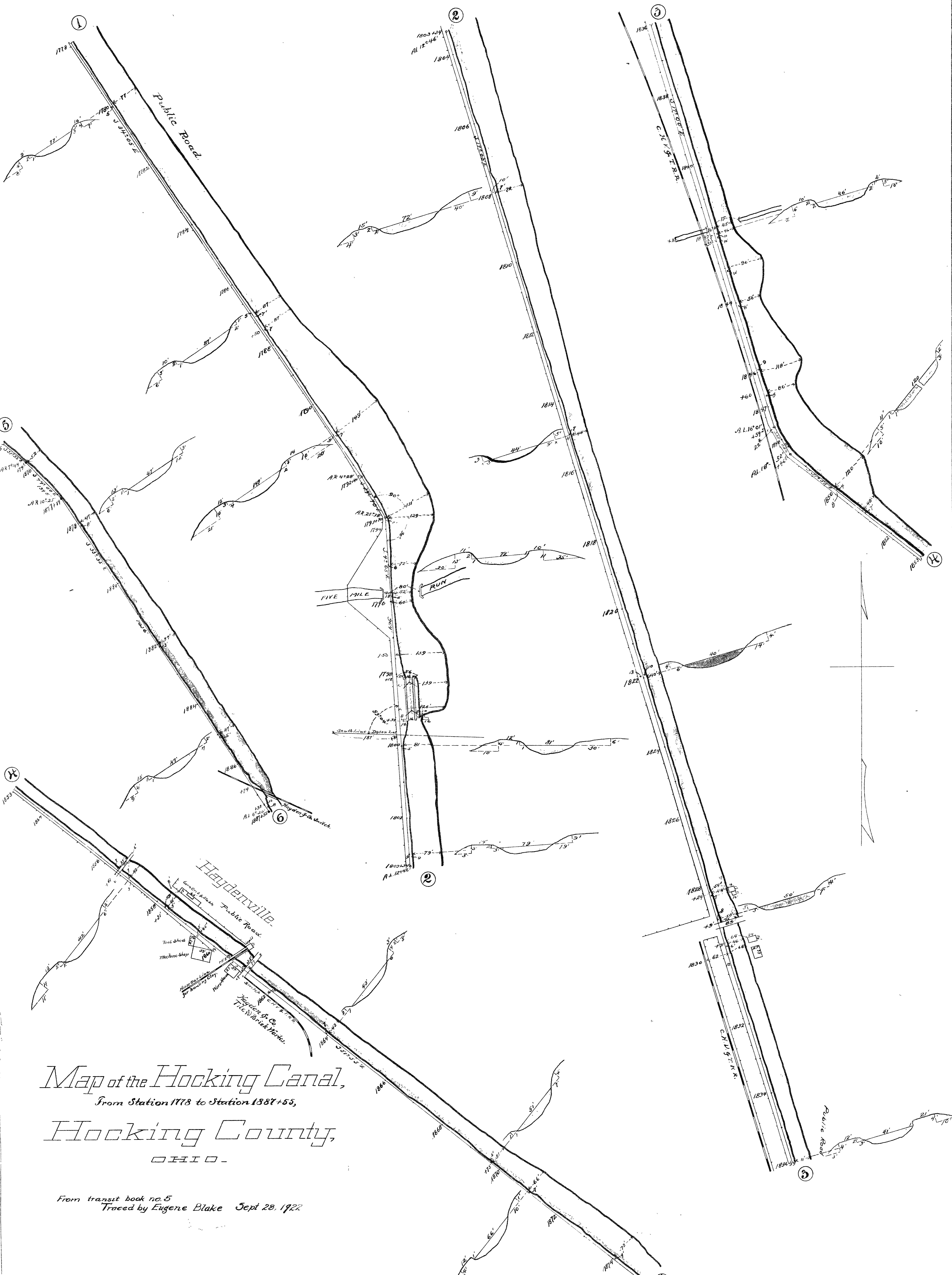
Map of the Hocking Canal.
 From Sta. 1581 to Sta. 1657,
Hocking County, Ohio.
 Scale 100 Feet = 1 Inch.



Map of the Hocking Canal,
 From Station 1657 to Station 1718,
 Hocking County, Ohio.
 Scale 100 Feet = 1 Inch

FROM TRANSIT BOOK #5.

N. C. Romo, Surveyor
 A. H. Sawyer, Draughtsman
 S. S. Boston, Draughtsman



Map of the Hocking Canal,
 From Station 1778 to Station 1887+55,
 Hocking County,
 OHIO.

From transit book no. 5
 Traced by Eugene Blake Sept 28, 1922

71' 0" N

1

2

FAIRFIELD CO.
Sec. 15
Good Hope Twp.

County Line

HOCHING CO.

Henry Schwenske

D. E. Jackson

C. E. Johnson

D. E. Jackson

3

4

Line of State Property

CANAL

HOCHING

Line of State Property

Hocking Valley R.R.

Line of State Property

HOCHING CANAL

Sec. 14

Sec. 15

5

C. E. Johnson

Line of State Property

HOCHING CANAL

Line of State Property

Henry Troxell

4

D. E. Jackson

Henry Schwenske

C. E. Jackson

Line of State Property

HOCHING CANAL

Line of State Property

Henry Troxell

6

Line of State Property

HOCHING CANAL

Sheet No. 12
Bruce Daughton's Survey of the
Hocking Canal

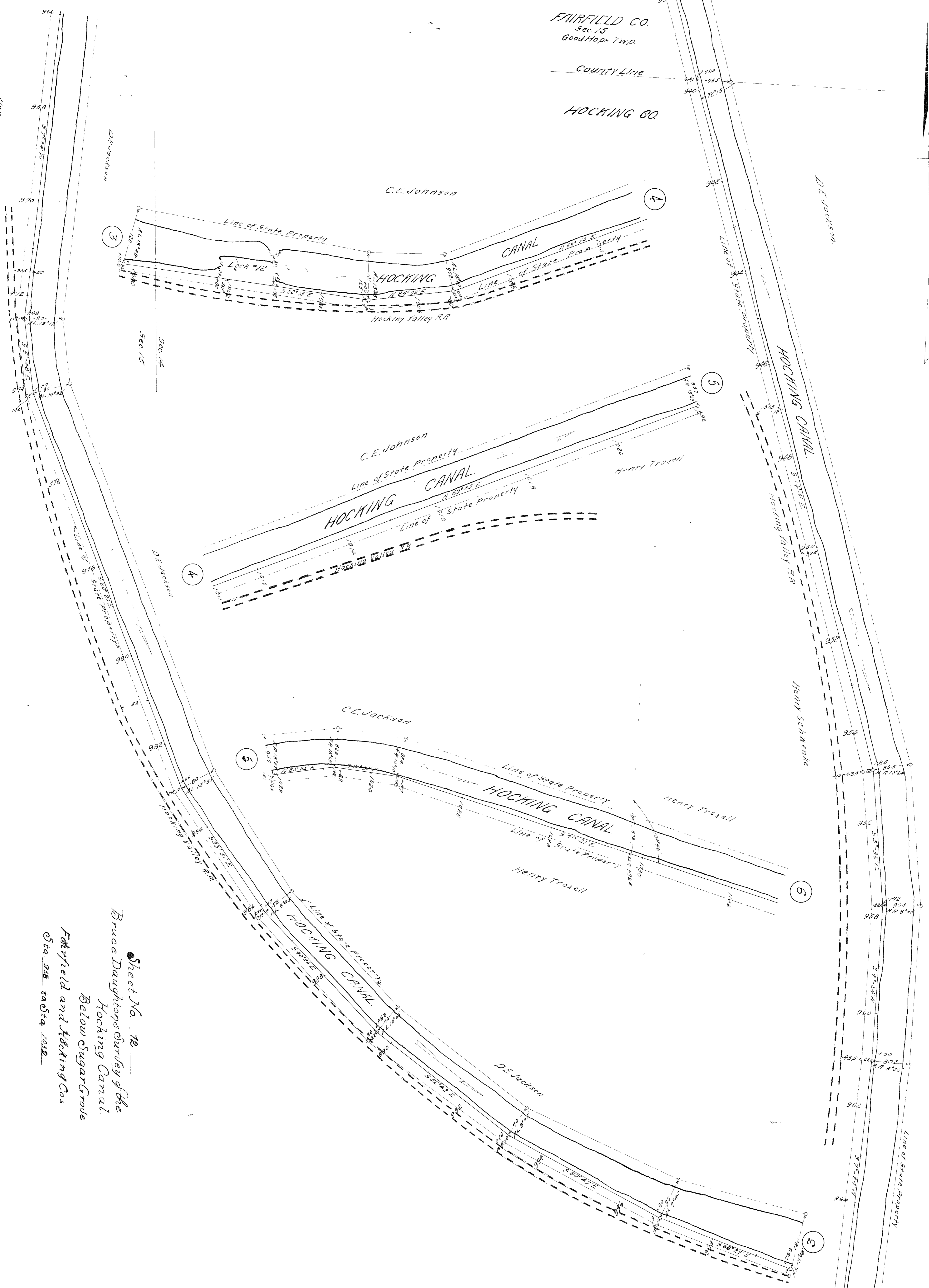
Fairfield and Hocking Cos.
Sta. 938 to Sta. 2032

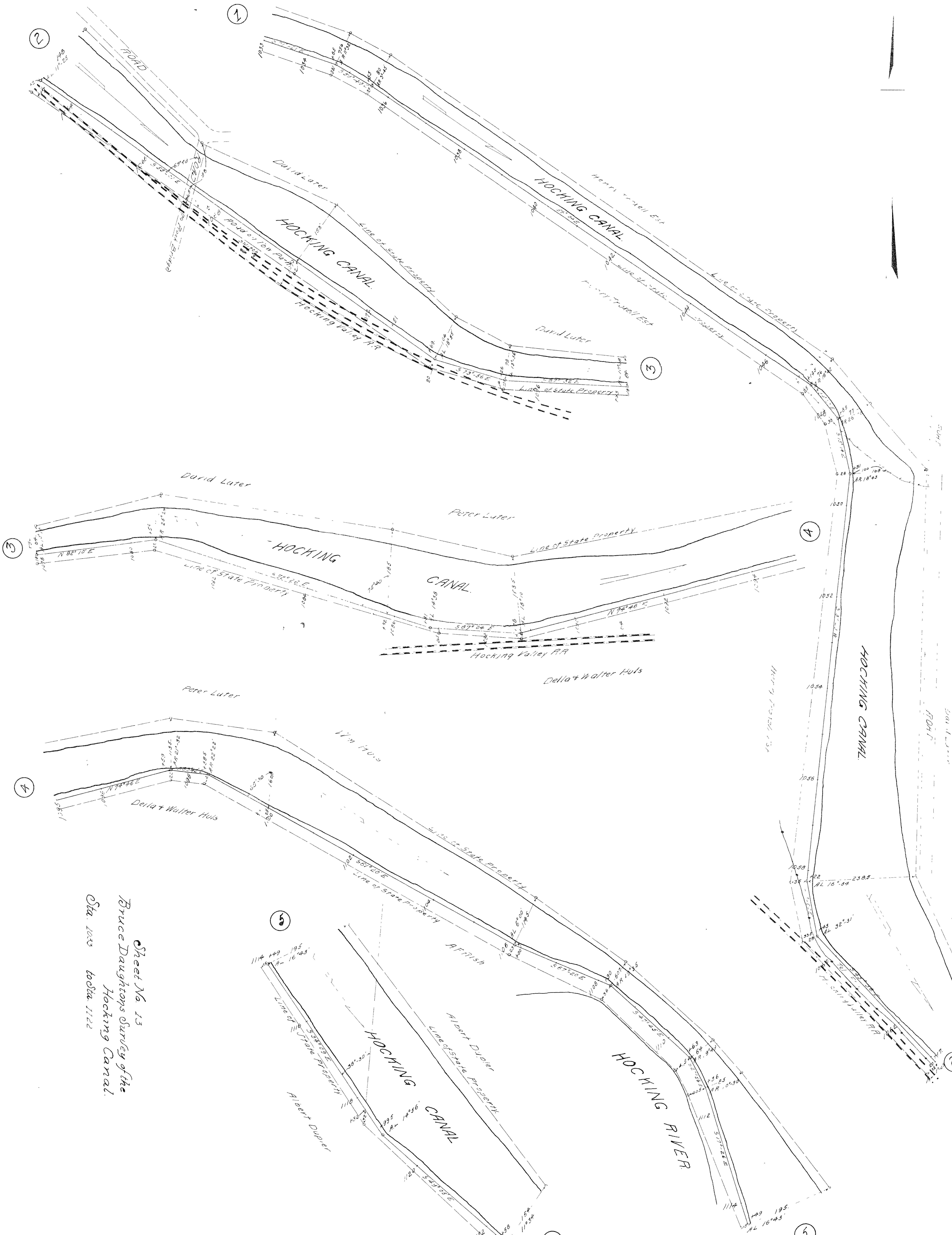
Below Sugar Grove

D. E. Jackson

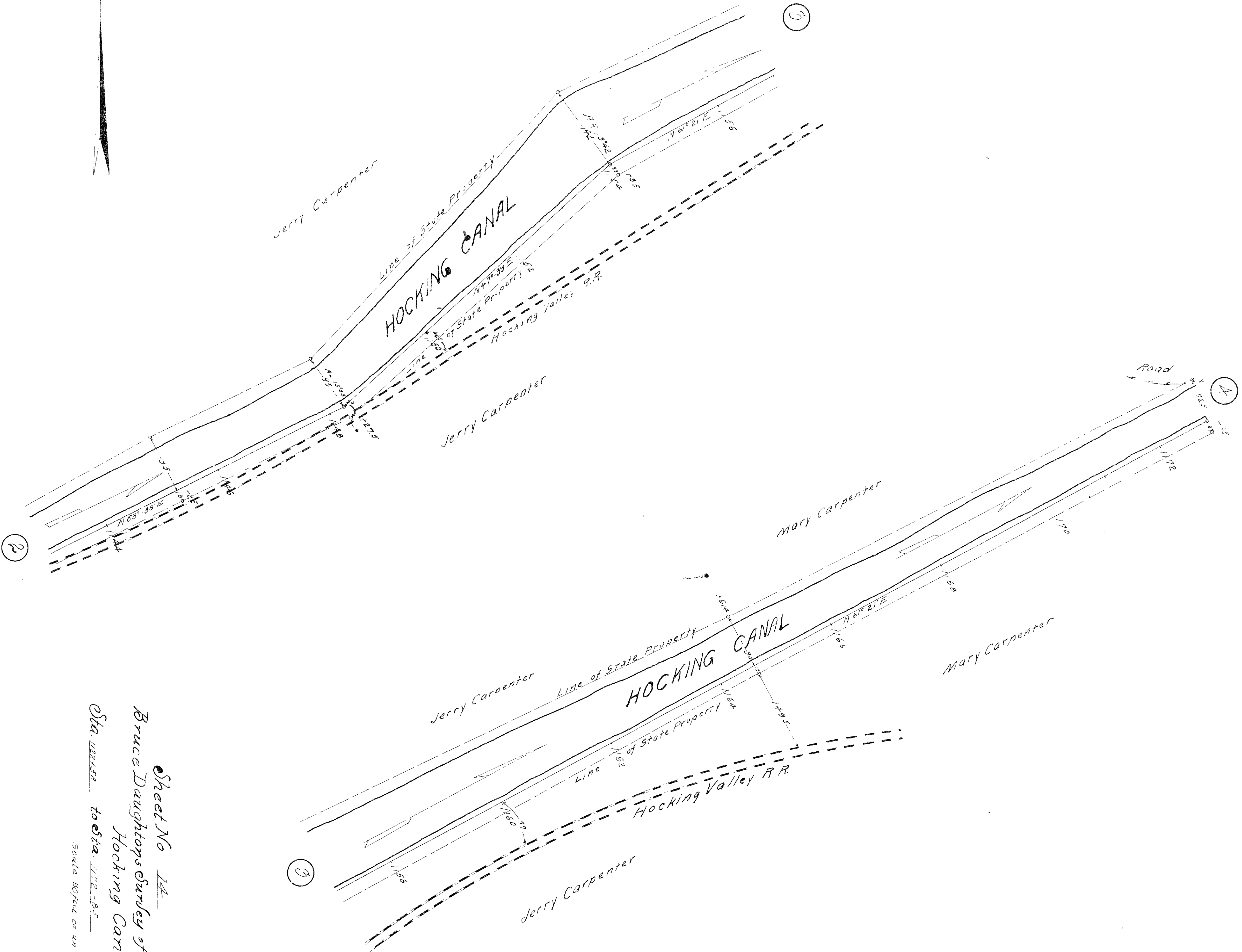
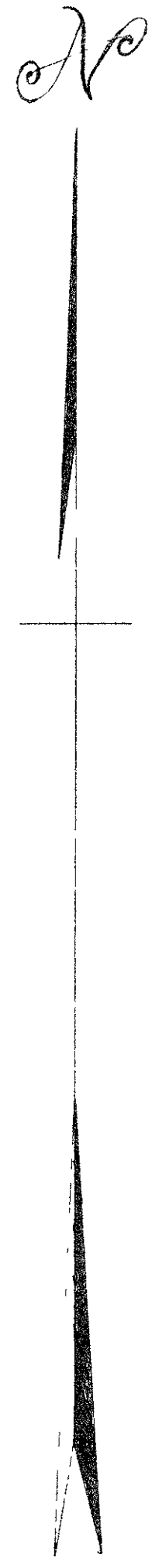
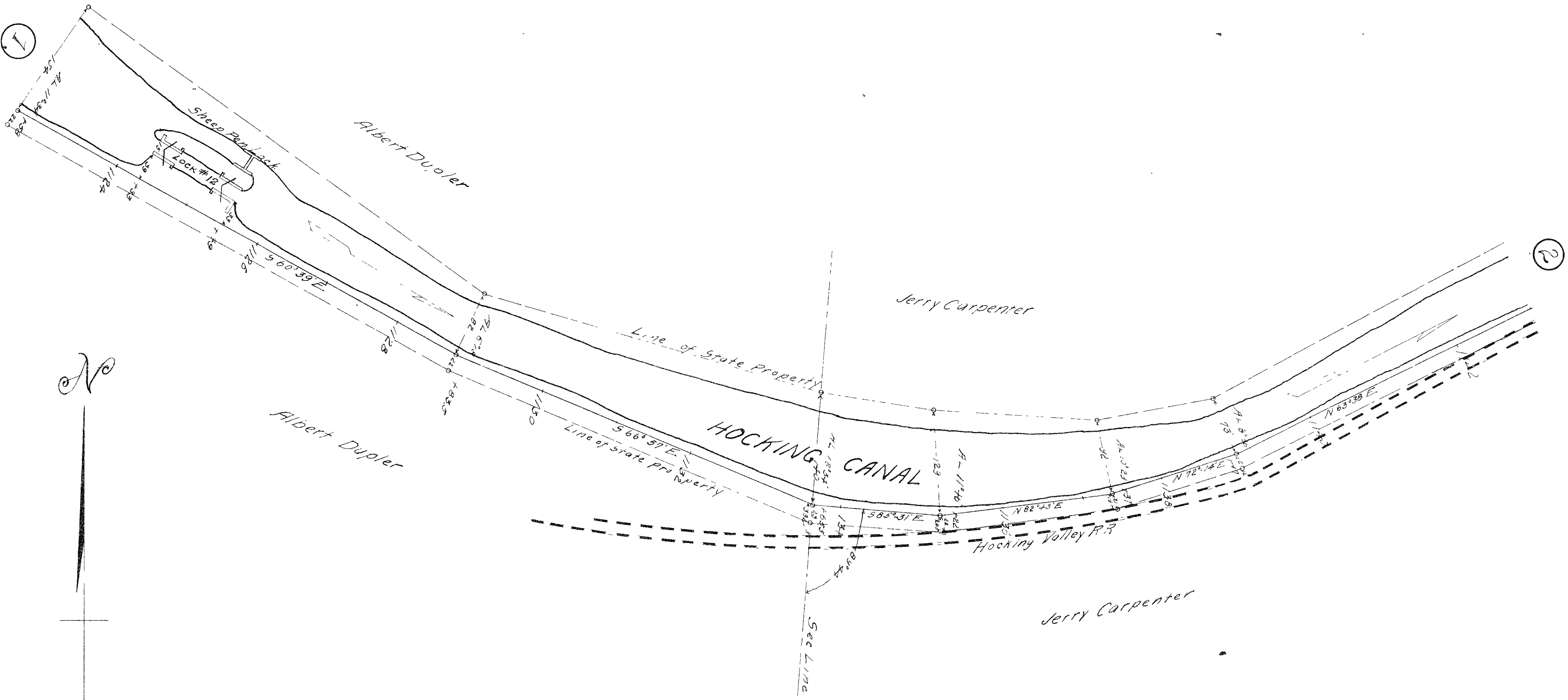
Line of State Property

7

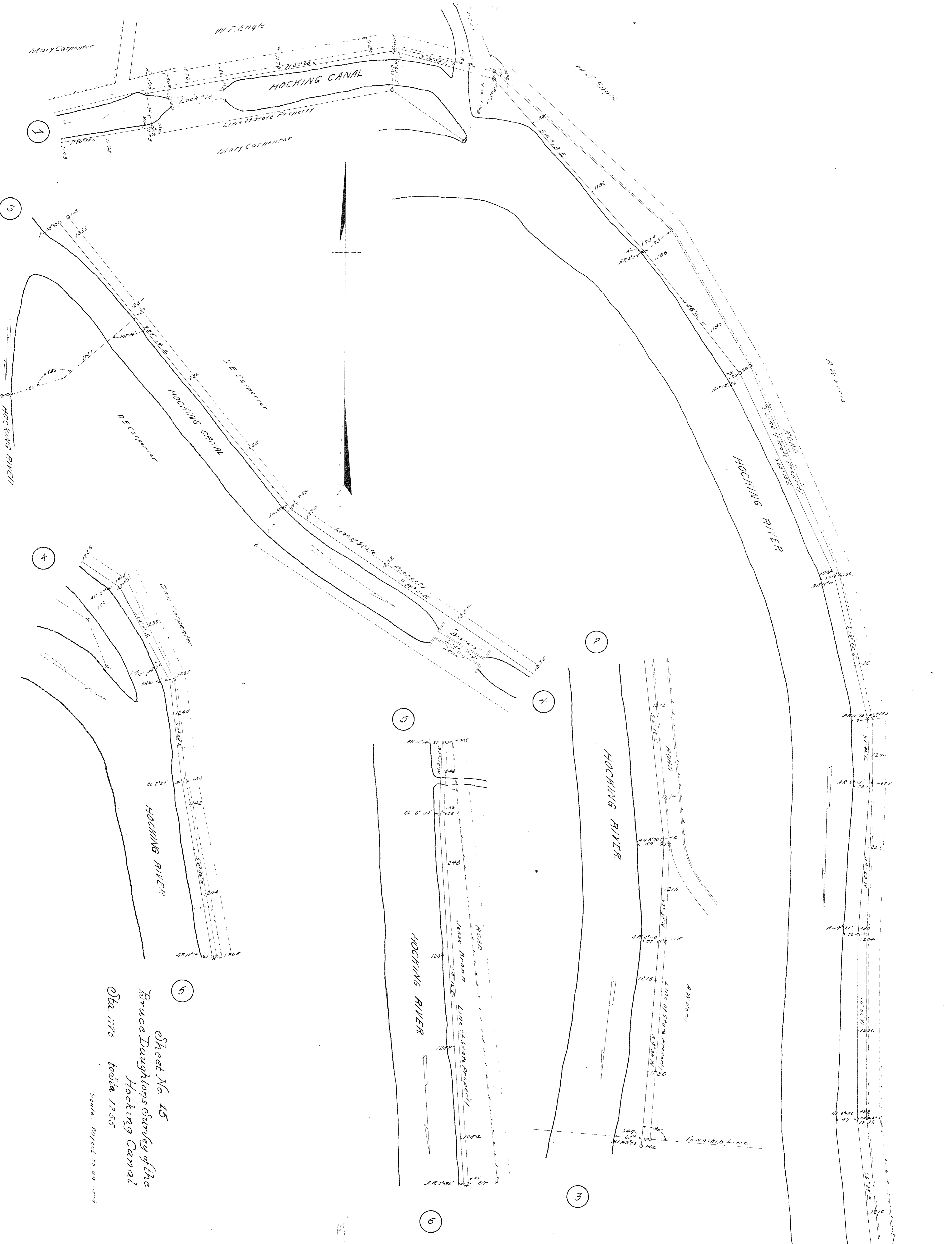




Sheet No. 13
 Bruce Daughters Survey of the
 Hocking Canal.
 Sta. 1003 to Sta. 1122

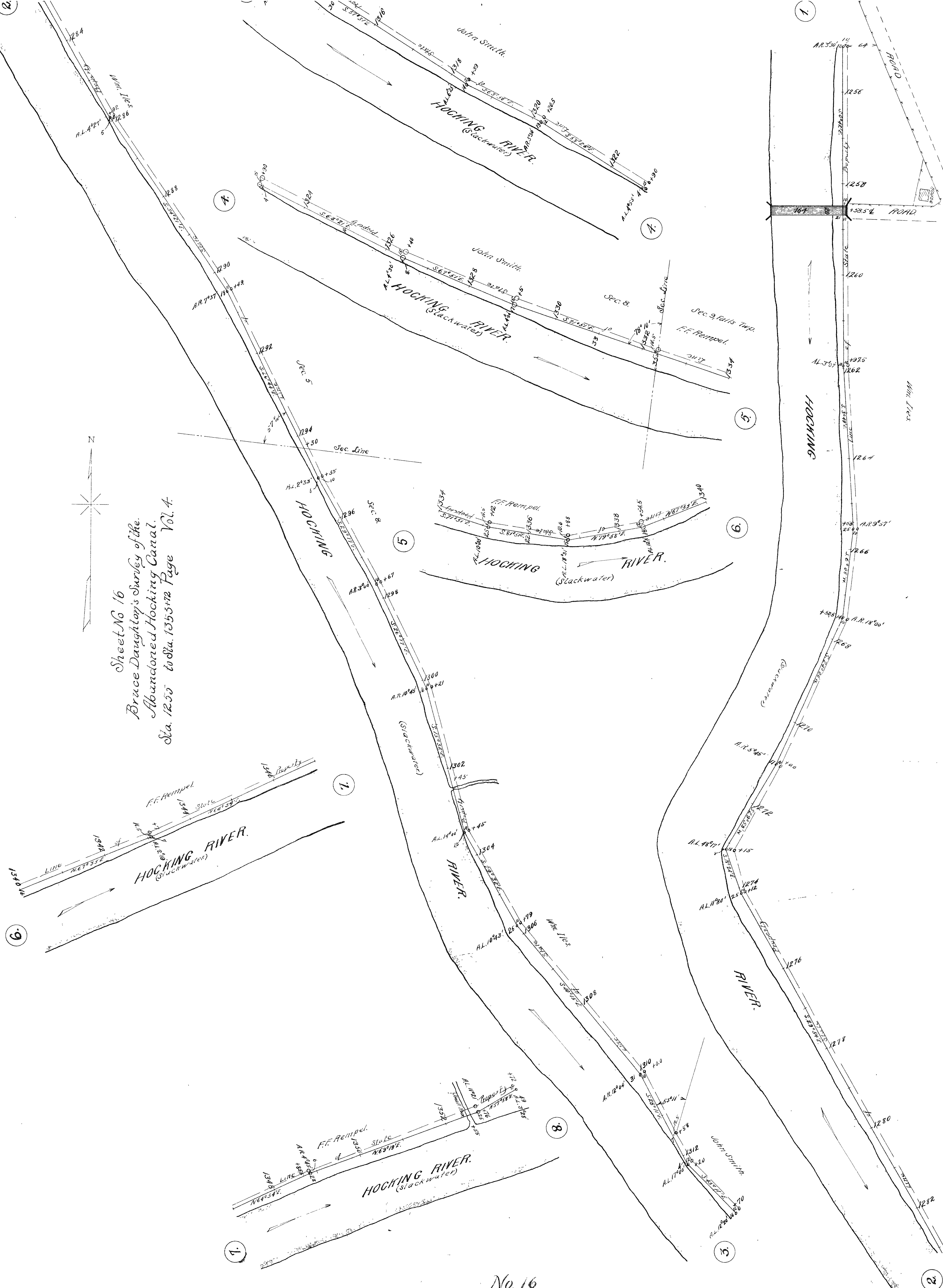
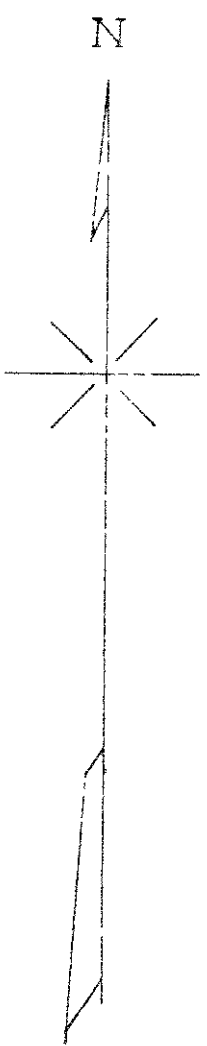


Sheet No 14
 Bruce Daughens Surley of the
 Hocking Canal.
 Sta. 1225.52 to Sta. 1172.85
 Scale 80 feet to an inch

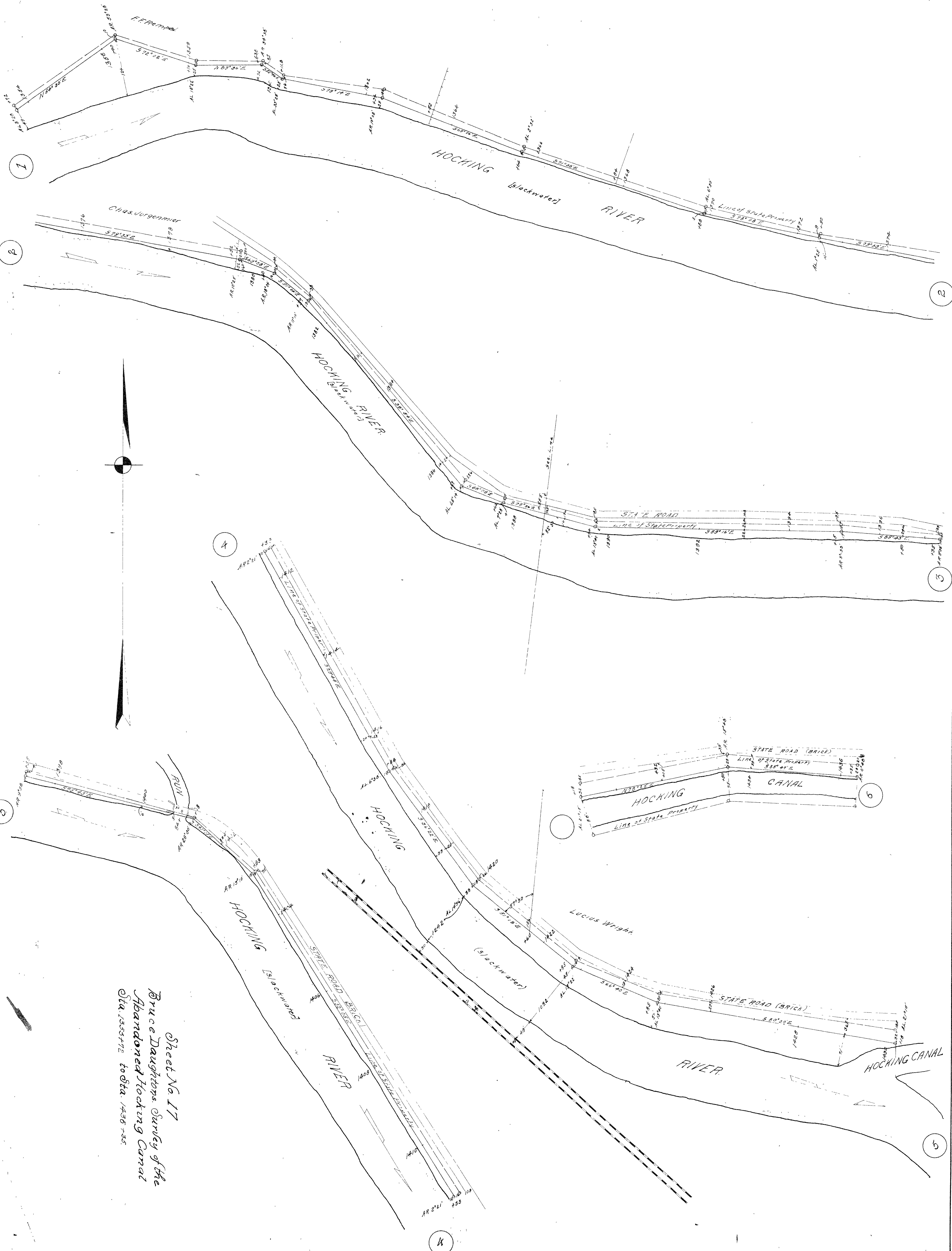


Sheet No. 15
 Bruce Daughton Survey of the
 Hocking Canal
 Sta. 1175 to Sta. 1255
 Scale - 80 feet to an inch

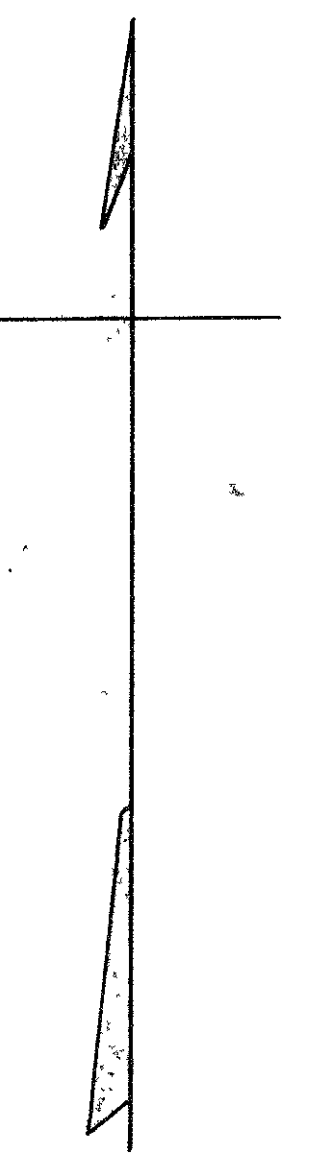
Sheet No 16
Bruce Daughton's Survey of the
Abandoned Hocking Canal,
Sta. 1250 to Sta. 1355 1/2 Page Vol. 4.



21°N



Sheet No. 17
 Bruce Daughters, Survey of the
 Abandoned Hocking Canal
 Sta. 1353+72 to Sta. 1436+35



Map of the Abandoned Stocking Canal,
from Sta. 1436+61 to Sta. 1492+80
Stocking Co. Ohio.
Scale 80' = 1 inch.

Logans,
Stocking Co.

61/19



Sheet No. 19.

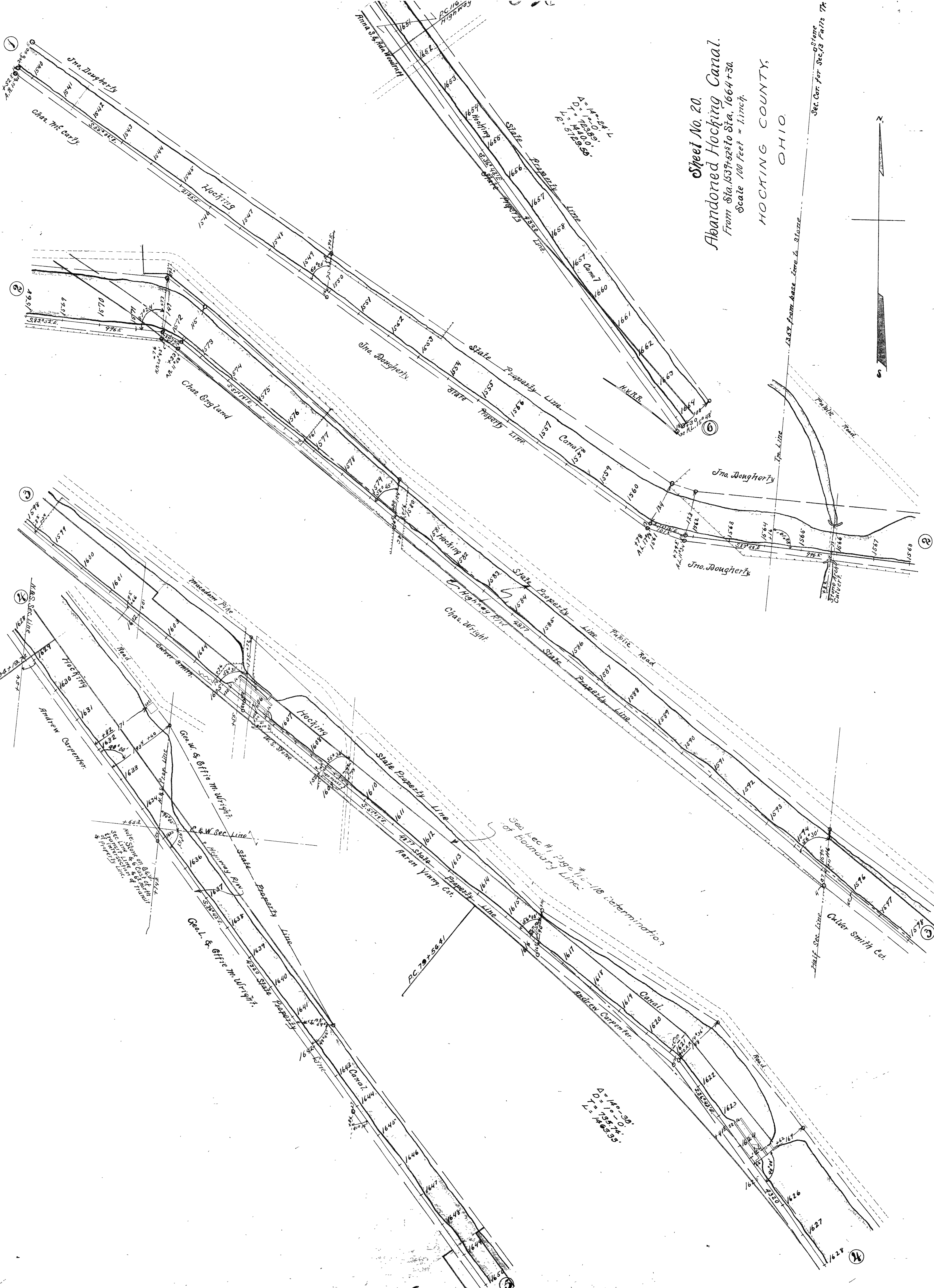
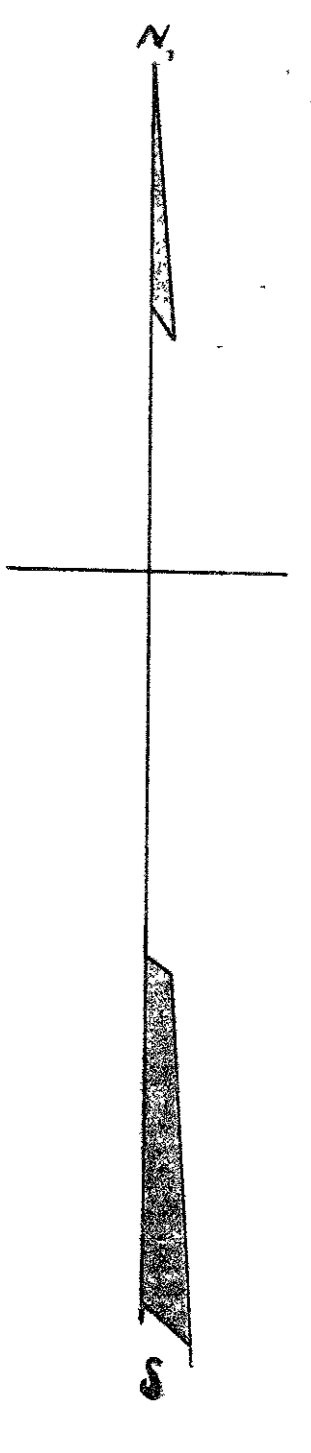
Abandoned Hocking Canal,
Logan, Hocking Co.,
Ohio.

From Sta. 1493 to Sta. 1539+52.5

Surveyed by W. H. B. D. H.

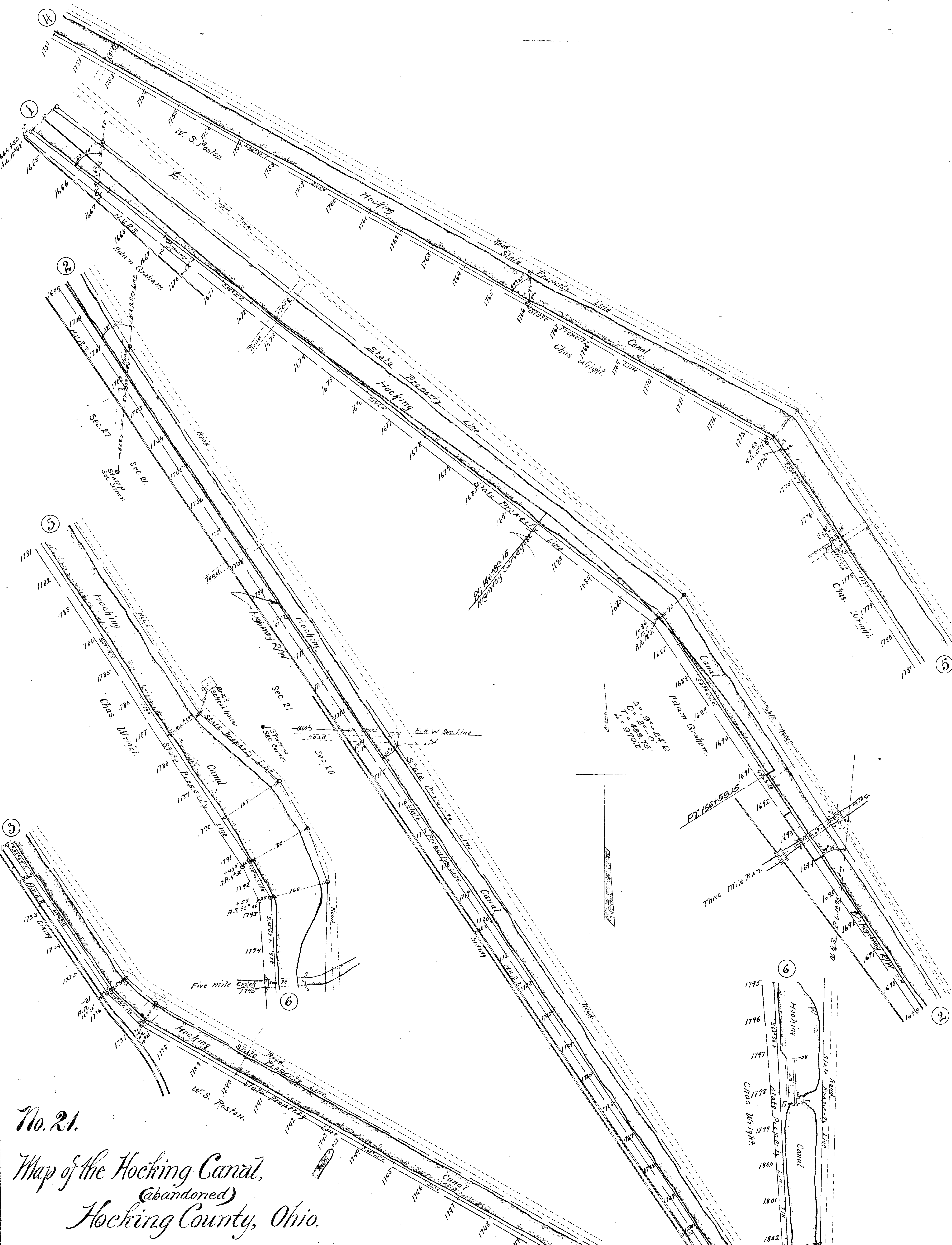
Sheet No. 20.
 Abandoned Hocking Canal.
 From Sta. 1537+25 to Sta. 1664+30.
 Scale 100 Feet = 1 inch.
 HOCKING COUNTY,
 OHIO

Sec. Cor. for Secs 18 Falls 74

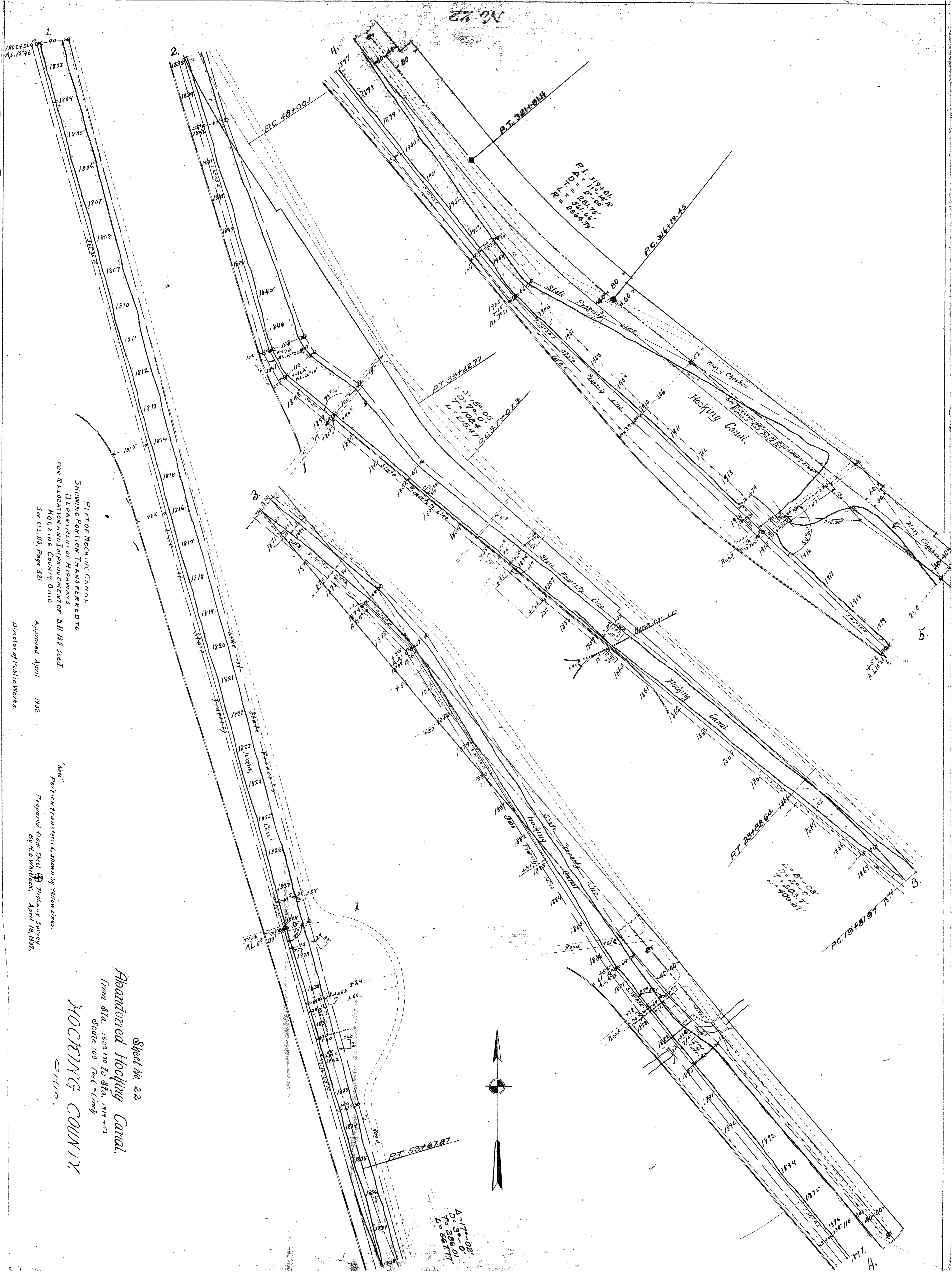


$\Delta = 140^{\circ} 24' 4''$
 $D = 1298.89'$
 $T = 1410.00'$
 $L = 5129.58'$

$\Delta = 140^{\circ} 30'$
 $D = 1355.74'$
 $L = 146335'$



No. 21.
Map of the Hocking Canal,
(Abandoned)
Hocking County, Ohio.



PLAT OF HOCKING CANAL
 SHOWING PORTION TRANSFERRED TO
 DEPARTMENT OF HIGHWAYS
 FOR RELOCATION AND IMPROVEMENT OF SH 155, SECT.
 HOCKING COUNTY, OHIO
 See O.L. 113, Page 521
 Approved April 1932
 Director of Public Works

Note
 Portion transferred, shown by yellow lines.
 Prepared from Sheet 1 Highway Survey
 By H. E. Whitlock, April 18, 1932.

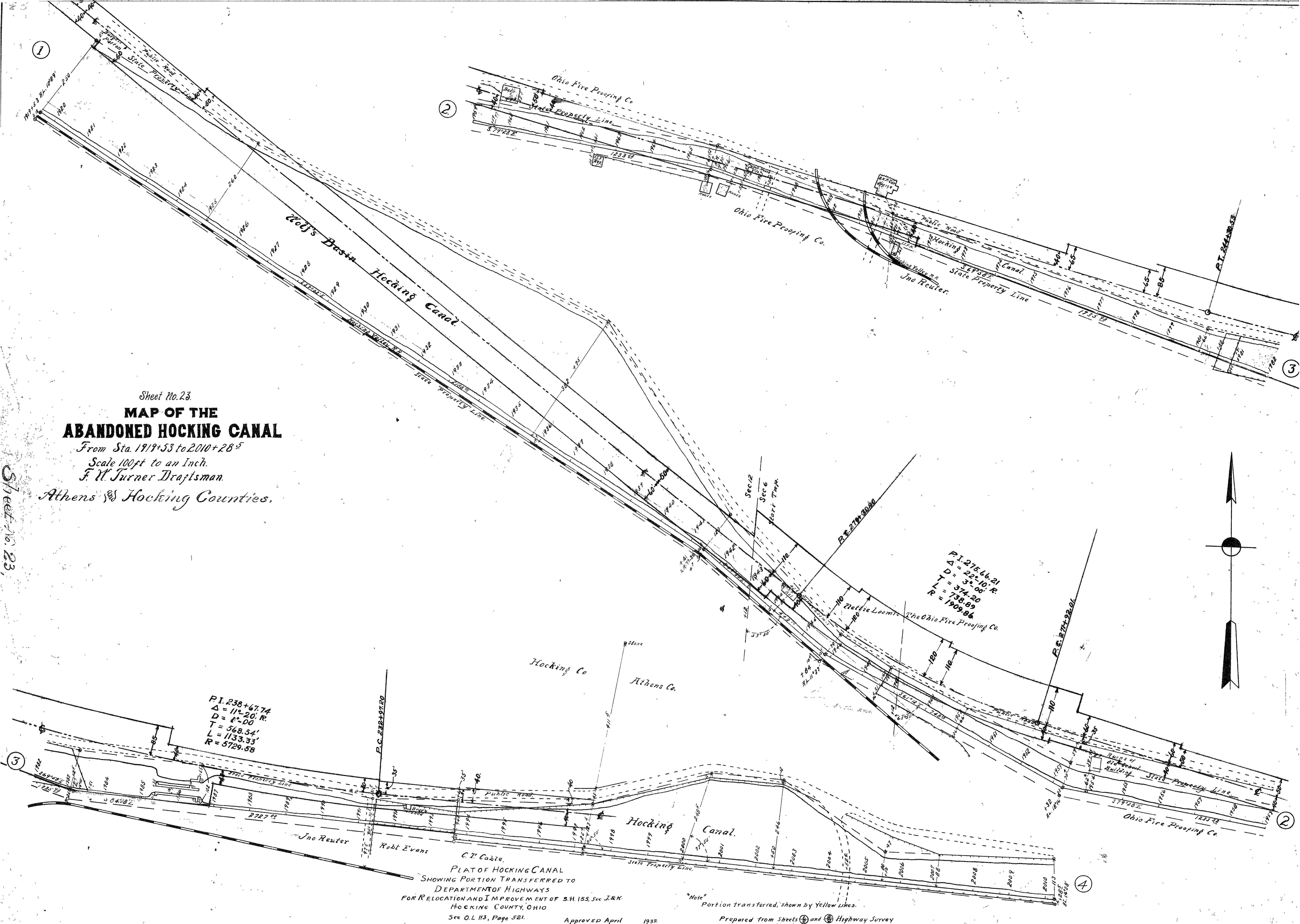
Abandoned Hocking Canal.
 From Sta. 1802+50 to Sta. 1919+53.
 Scale 1" = 100 Feet = 1 inch
 HOCKING COUNTY,
 OHIO.

Sheet No. 22

$\Delta = 17^{\circ} - 02'$
 $D = 286.01'$
 $L = 56.717'$

Sheet No. 23.
**MAP OF THE
 ABANDONED HOCKING CANAL**
 From Sta. 1919+53 to 2010+28.5
 Scale 100ft to an Inch.
 F. W. Turner Draftsman.
 Athens & Hocking Counties.

Sheet No. 23.



P.I. 238+67.74
 $\Delta = 11^{\circ}20' R$
 $D = 8^{\circ}00'$
 $T = 568.54'$
 $L = 1133.33'$
 $R = 5729.58'$

P.I. 276+66.21
 $\Delta = 22^{\circ}10' R$
 $D = 3^{\circ}00' R$
 $L = 374.20'$
 $R = 736.89'$
 $R = 1909.86'$

C. W. Cozle.
 PLAT OF HOCKING CANAL
 SHOWING PORTION TRANSFERRED TO
 DEPARTMENT OF HIGHWAYS
 FOR RELOCATION AND IMPROVEMENT OF S.H. 155, Sec. J & K
 HOCKING COUNTY, OHIO
 See O.L. 113, Page 521.

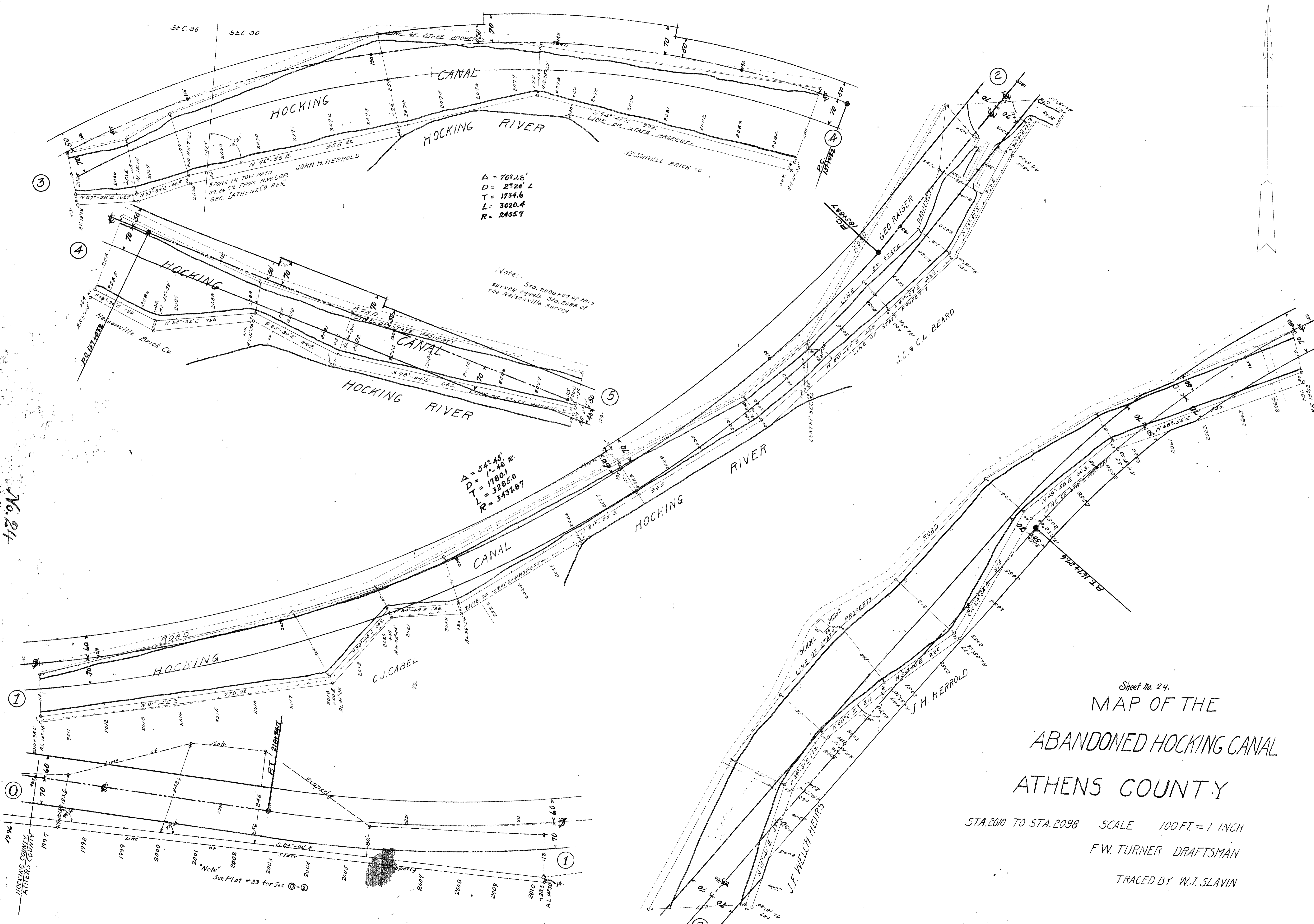
Note
 Portion transferred, shown by yellow lines.

Approved April 1932

Prepared from Sheets 22 and 24 Highway Survey
 By H.E. Whitlock, April 18, 1932.

Director of Public Works.

No. 24

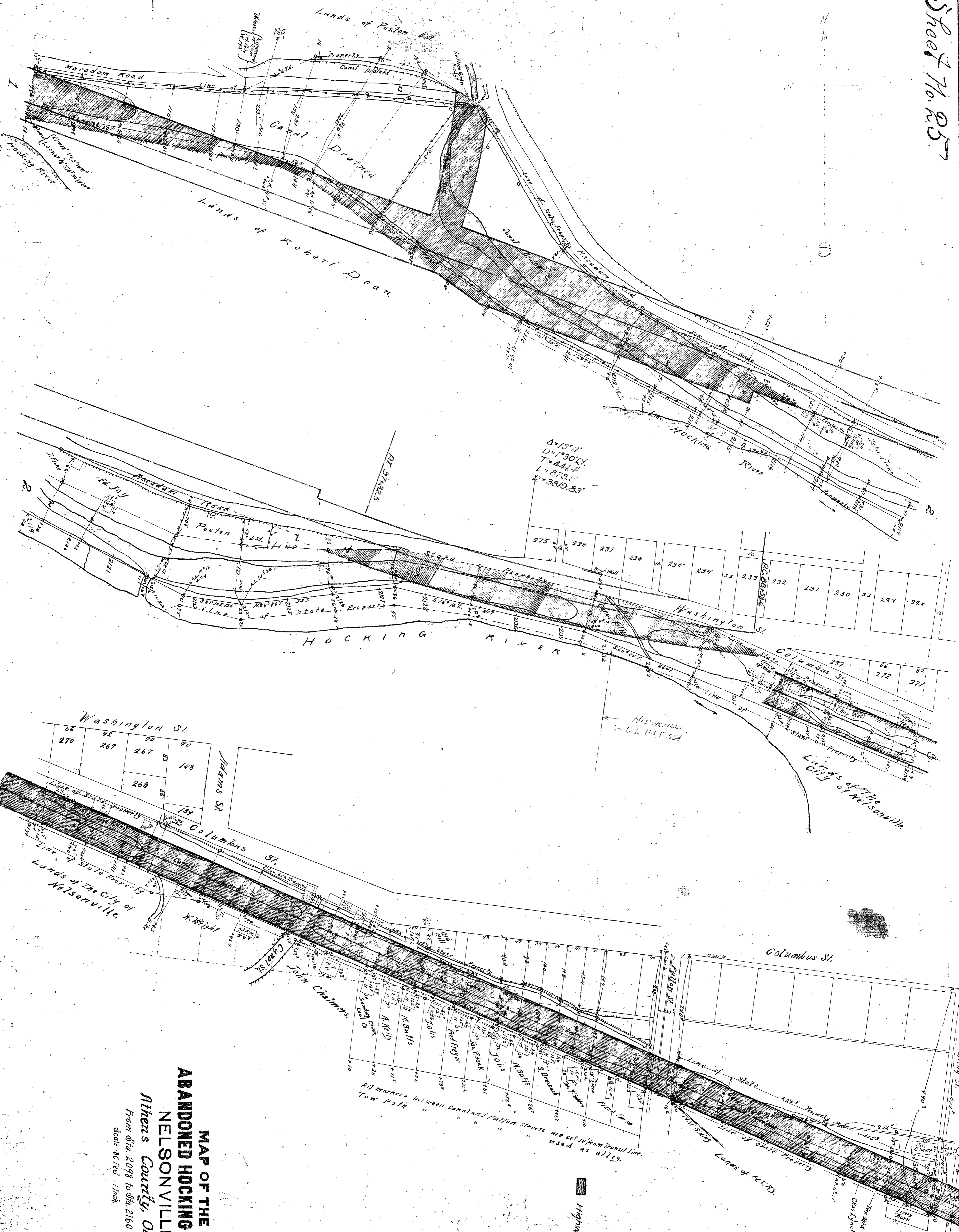


Sheet No. 24.
 MAP OF THE
 ABANDONED HOCKING CANAL
 ATHENS COUNTY

STA. 2010 TO STA. 2098 SCALE 100 FT. = 1 INCH
 F.W. TURNER DRAFTSMAN
 TRACED BY W.J. SLAVIN

HOCKING COUNTY
 ATHENS COUNTY
 1997
 1998
 1999
 2000
 2001
 2002
 2003
 2004
 2005
 2006
 2007
 2008
 2009
 2010

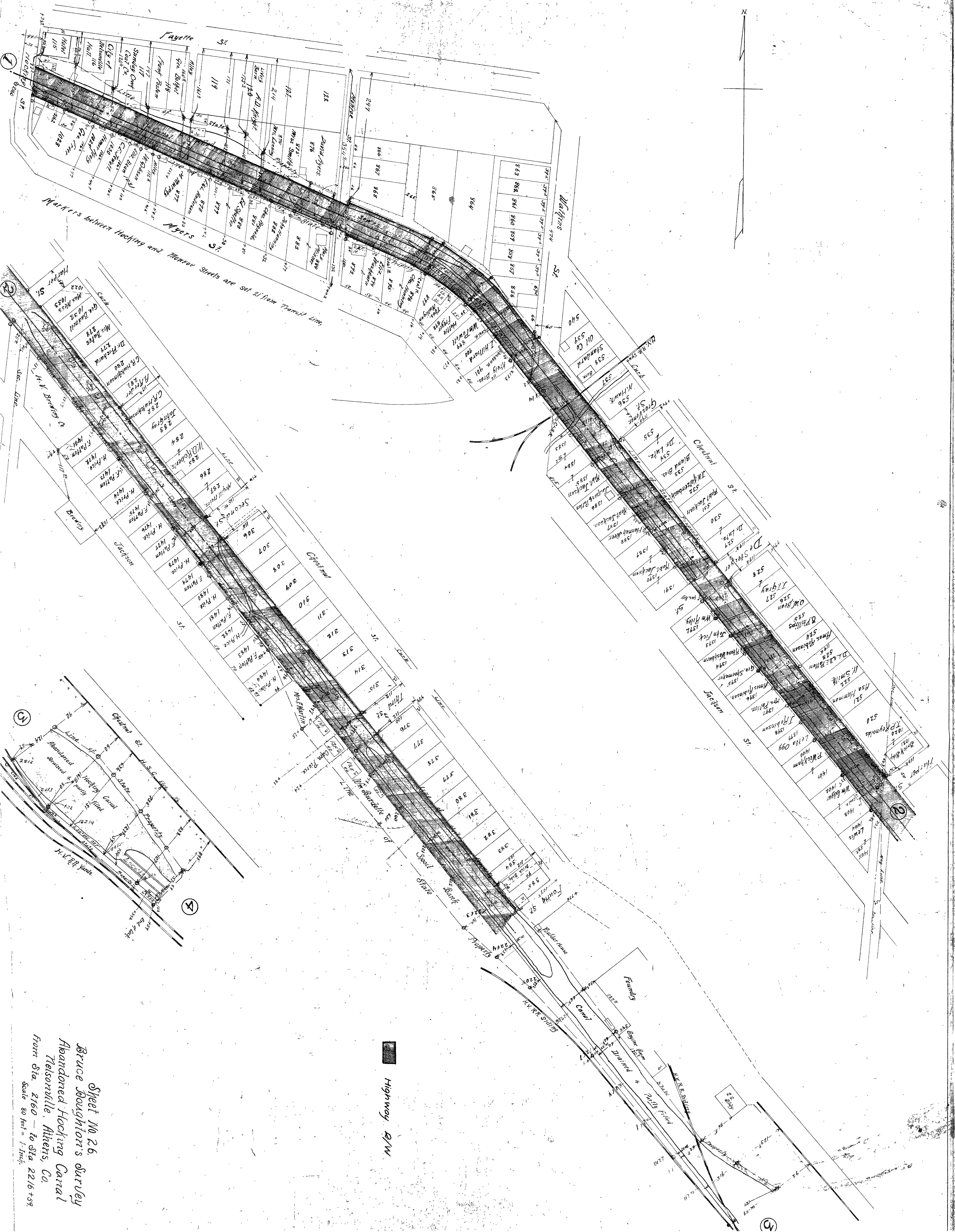
Note
 See Plat # 23 for Sec 36-30



$\Delta = 13^\circ 11'$
 $D = 1030.44'$
 $T = 441.4'$
 $L = 878.5'$
 $D = 3819.83'$

All markers between Canal and Fulton Streets are set w/ from transit line. used as alley. Tow Path

**MAP OF THE
 ABANDONED HOCKING C.
 NELSONVILLE,
 Athens County, Ohio**
 From Sta. 2098 to Sta. 2160
 Scale 30 feet = 1 inch.



Markers between Hooping and Monroe Streets are set 1/2 from Transit Line

Highway R/W

Sheet No 26
 Bruce Soughion's survey
 Abandoned Hooping Canal
 Nelsonville, Athens, Co.
 From Sta. 2160 - to Sta. 2216 +59
 Scale 80 feet = 1 Inch.