

1997 HOCKING COUNTY HIGHWAY MAP

County Engineer
WILLIAM R. SHAW

County Commissioners
FRED HAWK - ROGER HINERMAN - GARY STARNER



Issued by Hocking County Engineer's Office
NOT FOR RESALE

OFFICE OF HOCKING COUNTY ENGINEER
1286 CALIFORNIA AVE.
AND
HOCKING COUNTY MAP AND DRAFTING
HOCKING COUNTY COURTHOUSE
Corner of Market St. and Main St.
Phone 614-385-8545

Latitude 39° 32' 22" North
Longitude 82° 24' 31" West
Elevation 741 Feet

COUNTY STATISTICS

County Organized March 1, 1818
Population (1990) 25,533
Area 421 sq. miles
Highest Elevation 1,225 feet
State Roads 168.10 miles
County Roads 212.92 miles
Township Roads 415.41 miles
TOTAL ROADS 796.43 miles

POPULATION DISTRIBUTION

Laurelville 605
Logan City 6,725
Murray City 498
TOTAL CITY 7,829
Falls Township 763
Good Hope Township 10,878
Green Township 1,247
Laurel Township 2,217
Marion Township 968
Perry Township 1,950
Salt Creek Township 2,225
Starr Township 1,172
Washington Township 1,878
TOTAL COUNTY 25,533

CITY

Logan H-18

VILLAGES

Laurelville M-2M-3
Murray City L-29

VILLAGES AND COMMUNITIES

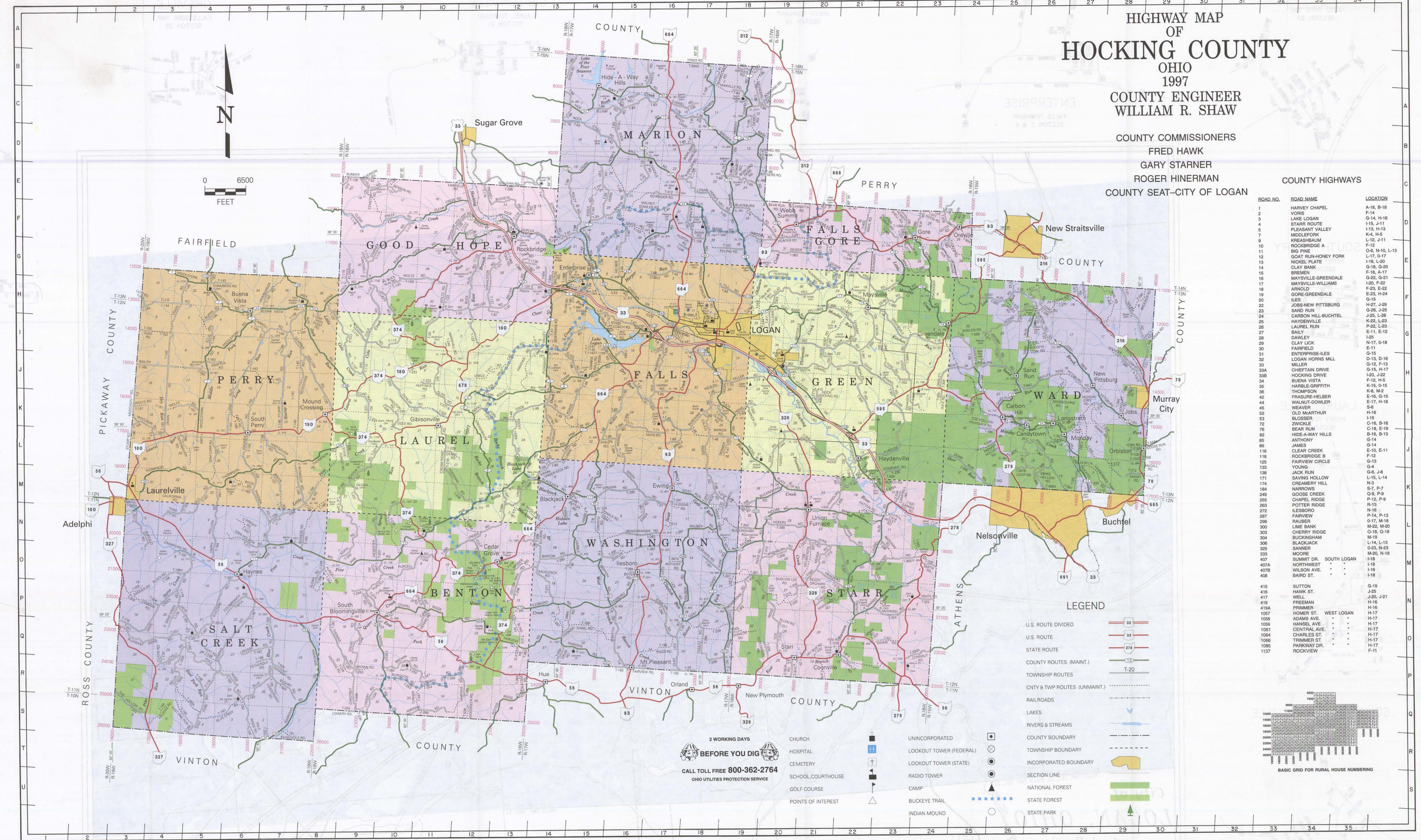
Buena Vista H-5
Candy Town J-26
Carbon Hill J-26
Enterprise G-14
Gibsonville K-10
Gore E-29
Haydenville K-22
Hesboro N-16
Longstreth J-27
Murray City P-9
New Mt. Pleasant Q-16
Oreville E-24
P. Pleasant N-13
Rockbridge F-12
South Bloomingville P-9
South Perry L-20, M-20
Union Furnace L-20, M-20

STATE PARKS AND POINTS OF INTEREST

1. Old Man's Cave-Cedar Grove
2. Park Ranger Station
3. Campgrounds Office
4. Old Man's Cave Lodge
5. Rose Lake
6. Cedar Falls
7. Cedar Falls Picnic Area
8. Ash Cave
9. Ash Cave Tower
10. Conkles Hollow
11. Spruce Run Bridge Trail
12. Forestry Headquarters
13. Foreman's Camp
14. Rock House
15. Cantwell Cliffs
16. Natural Rock Bridge
17. Lake Logan
18. Lake Logan Beach
19. Lake Logan Boat Dock
20. Canal Locks
21. Sand Run Lake

HIGHWAY MAP OF HOCKING COUNTY OHIO 1997

COUNTY ENGINEER
WILLIAM R. SHAW
COUNTY COMMISSIONERS
FRED HAWK
GARY STARNER
ROGER HINERMAN
COUNTY SEAT-CITY OF LOGAN



NAME	LOCATION NUMBER	NAME	LOCATION NUMBER	NAME	LOCATION NUMBER	NAME	LOCATION NUMBER	NAME	LOCATION NUMBER	NAME	LOCATION NUMBER	NAME	LOCATION NUMBER	NAME	LOCATION NUMBER	NAME	LOCATION NUMBER	NAME	LOCATION NUMBER
Abel	H-17	Abel	H-17	Abel	H-17	Abel	H-17	Abel	H-17	Abel	H-17	Abel	H-17	Abel	H-17	Abel	H-17	Abel	H-17
Abel	H-17	Abel	H-17	Abel	H-17	Abel	H-17	Abel	H-17	Abel	H-17	Abel	H-17	Abel	H-17	Abel	H-17	Abel	H-17

U.S. HIGHWAY

NAME	LOCATION NUMBER	NAME	LOCATION NUMBER
Abel	H-17	Abel	H-17
Abel	H-17	Abel	H-17

STATE HIGHWAYS

NAME	LOCATION NUMBER	NAME	LOCATION NUMBER
Abel	H-17	Abel	H-17
Abel	H-17	Abel	H-17

STREETS, ROADS AND HIGHWAYS IN HOCKING COUNTY

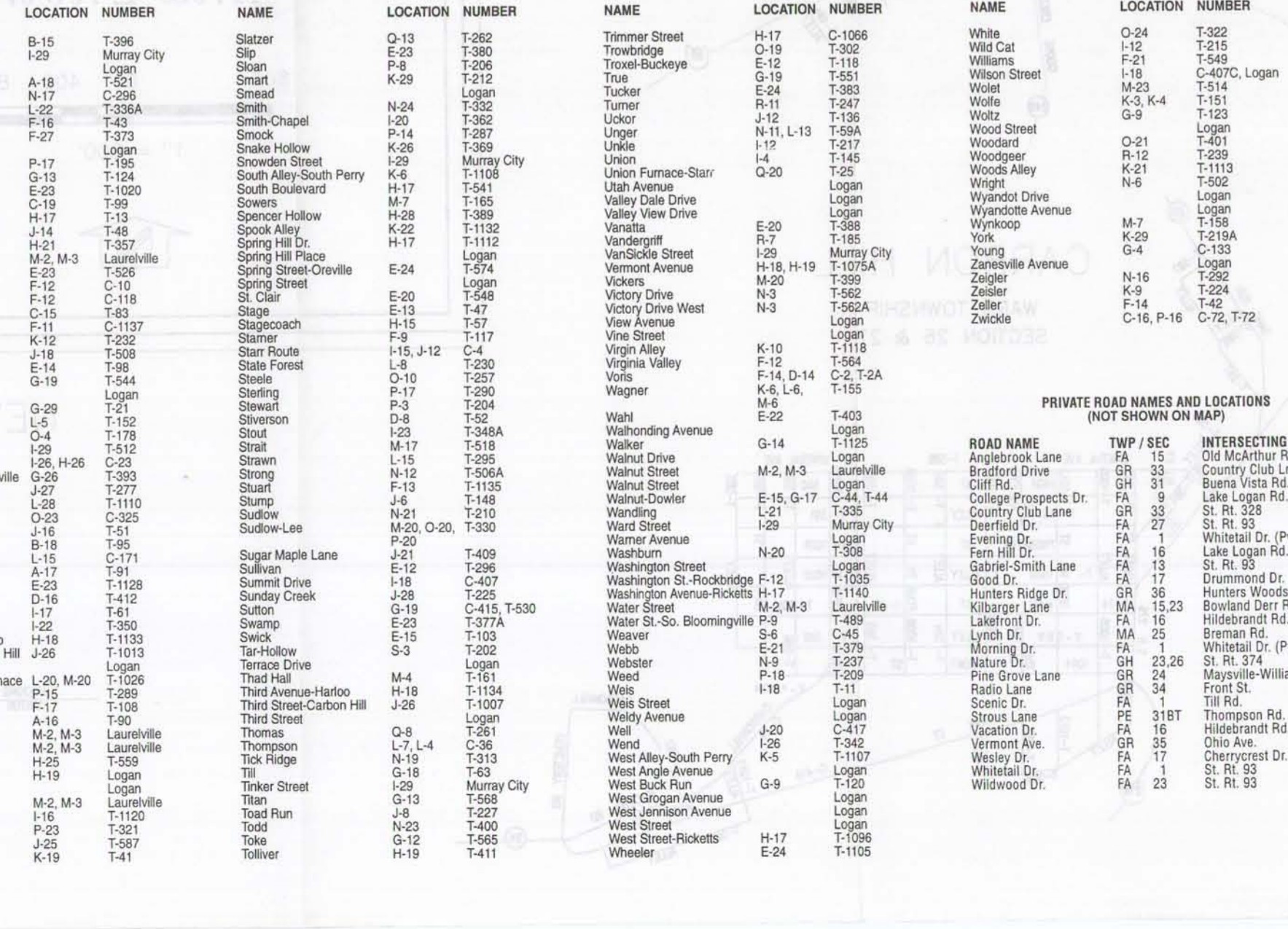
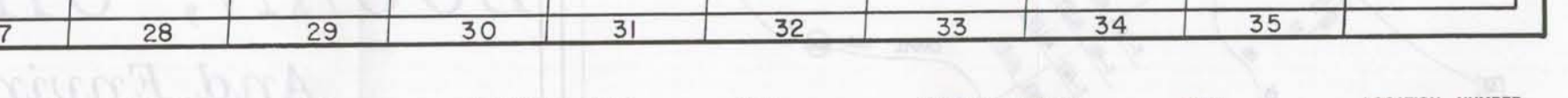
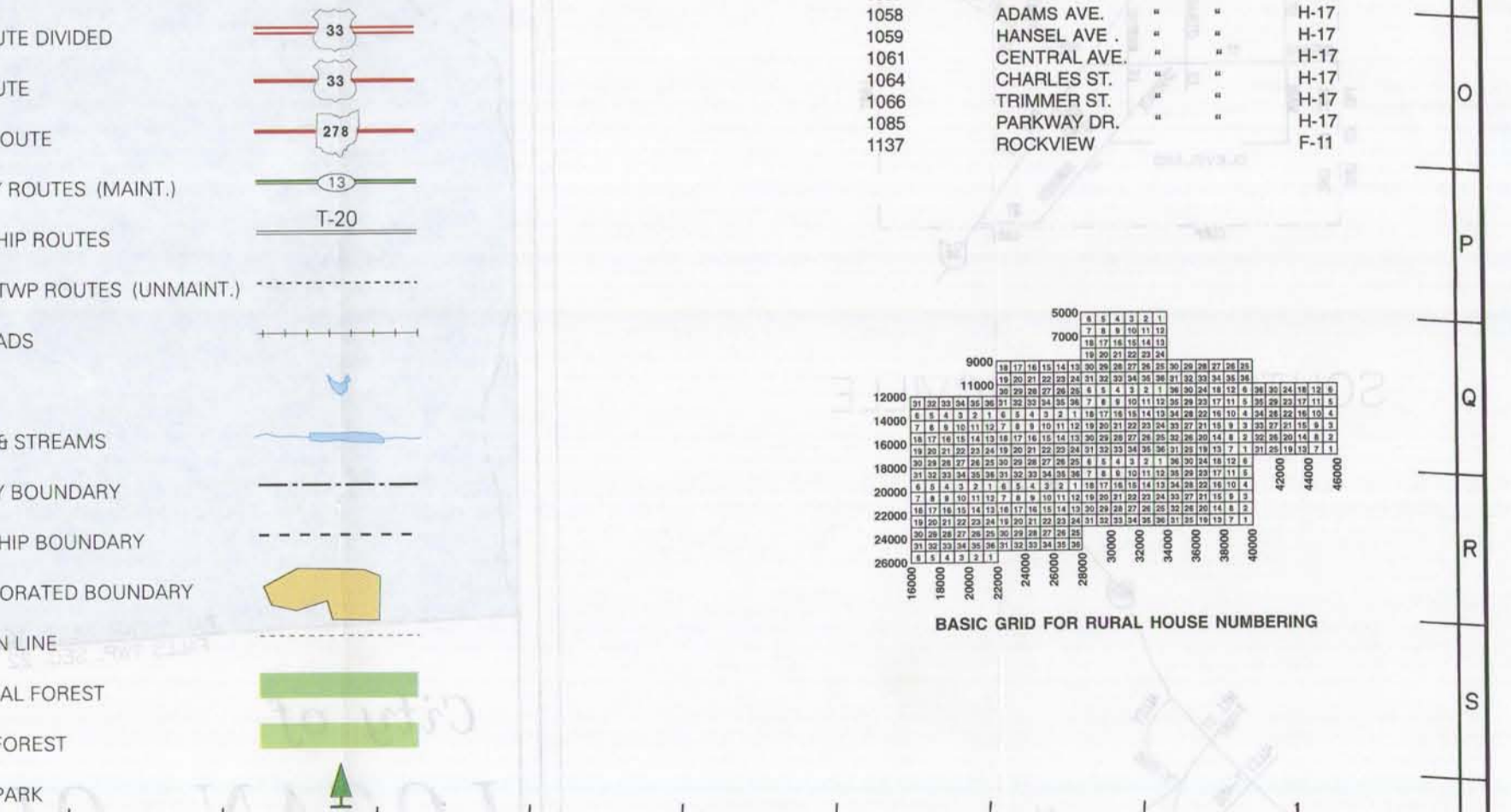
NAME	LOCATION NUMBER	NAME	LOCATION NUMBER
Abel	H-17	Abel	H-17
Abel	H-17	Abel	H-17

PRIVATE ROAD NAMES AND LOCATIONS (NOT SHOWN ON MAP)

NAME	LOCATION NUMBER	NAME	LOCATION NUMBER
Abel	H-17	Abel	H-17
Abel	H-17	Abel	H-17

ROAD NO.	ROAD NAME	LOCATION
1	HARVEY CHAPEL	A-18, B-18
2	YORIS	F-14
3	LAKE LOGAN	G-14, H-16
4	STARR ROUTE	E-15, H-11
5	PLEASANT VALLEY	I-13, H-13
6	MIDDLEFORK	K-4, H-5
7	KRESKIBALUM	J-12, J-11
8	ROCKBRIDGE A	F-12
9	COAT RUN-HONEY FORK	O-6, N-10, L-13
10	NICKEL PLATE	L-17, O-17
11	CLAY BANK	I-18, L-20
12	BREMEN	F-18, G-20
13	MAYSVILLE-GREENDALE	G-22, G-21
14	GORE-GREENDALE	G-22, F-22
15	ILES	G-15
16	JOBS NEW PITTSBURG	H-27, J-29
17	SAND RUN	J-28, J-25
18	CARBON HILL-BUCHTEL	J-25, L-28
19	HAYDENVILLE	K-22, L-23
20	LAUREL RUN	K-26, L-23
21	BAILY	E-11, E-12
22	DANIELY	H-18
23	CLAY LICK	N-17, O-18
24	FAIRFIELD	E-11
25	ENTERPRISE-LES	G-15
26	LOGAN HORNS MILL	O-13, D-16
27	MILLEE	G-15, H-17
28	CHIEFTAIN DRIVE	F-12, J-22
29	HOCKING DRIVE	F-12, H-5
30	BUENA VISTA	K-15, O-15
31	HARBLE-GRIFFITH	K-8, M-2
32	THOMPSON	E-15, G-15
33	FRASER-HELBER	E-17, H-18
34	WALNUT-DOWLER	E-17, H-18
35	WEAVER	E-17, H-18
36	OLD MARTHUR	H-16
37	BOSSER	H-15
38	ZWICKLE	C-18, B-16
39	BEAR RUN	C-18, E-18
40	HIDE-WAY HILLS	B-16, B-13
41	ANTHONY	E-18, P-9
42	JAMES	O-14
43	CLASH CREEK	E-11, E-12
44	ROCKBRIDGE B	F-12
45	FAIRVIEW CIRCLE	G-13
46	YOUNG	G-4
47	JACK RUN	G-6, J-8
48	SAVING HOLLOW	I-15, L-14
49	CREAMERY HILL	I-14
50	NARROWS	S-7, P-7
51	GOOD CREEK	O-8, P-8
52	CHAPPEL RIDGE	P-12, P-9
53	POTTER RIDGE	R-13
54	LOTTER	H-16
55	FAIRVIEW	L-14, P-13
56	RAUBER	M-22, M-20
57	LIME BANK	M-22, M-20
58	CHEERY RIDGE	O-18, O-18
59	BLACKINGHAM	M-22, M-20
60	BLACKJACK	L-14, L-13
61	SANMER	O-25, N-23
62	MOORE	M-22, M-16
63	SUMMIT DR. SOUTH LOGAN	H-18
64	NORTHWEST	H-18
65	WILSON AVE.	H-18
66	BAIRD ST.	H-18
67	SUTTON	G-19
68	HAWK ST.	J-26, J-21
69	WELL	H-16
70	FREEMAN	H-16
71	PRINCE	H-16
72	HOMER ST. WEST LOGAN	H-17
73	ADAMS AVE.	H-17
74	HANDEL AVE.	H-17
75	CENTRAL AVE.	H-17
76	CHARLES ST.	H-17
77	TRIMMER ST.	H-17
78	PARKWAY DR.	H-17
79	ROCKVIEW	F-11

LEGEND



2 WORKING DAYS
BEFORE YOU DIG
CALL TOLL FREE 800-362-2764
OHIO UTILITIES PROTECTION SERVICE