

HOC - C.R. 118 - 0.14
SECTION 23, TOWNSHIP 13 NORTH, RANGE 18 WEST
GOOD HOPE TOWNSHIP
HOCKING COUNTY

2	3	A
Q EXISTING R/W CURVE DATA P.I. 12+94.23 $\Delta = 60^\circ 34' 25''$ Lt $D_c = 76' 23' 40''$ $R = 75.00'$ $L = 79.29'$ $T = 43.80'$ $E = 11.85'$	Q EXISTING R/W CURVE DATA P.I. 15+64.21 $\Delta = 18^\circ 14' 35''$ Rt $D_c = 28' 38' 52''$ $R = 150.00'$ $L = 47.76'$ $T = 24.08'$ $E = 1.92'$	Q PROPOSED R/W AND Q SURVEY & CONST. CURVE DATA P.I. 12+16.27 $\Delta = 24^\circ 20' 06''$ Lt $D_c = 5' 00' 00''$ $R = 1145.92'$ $L = 486.70'$ $T = 247.08'$ $E = 26.33'$

MONUMENT LEGEND

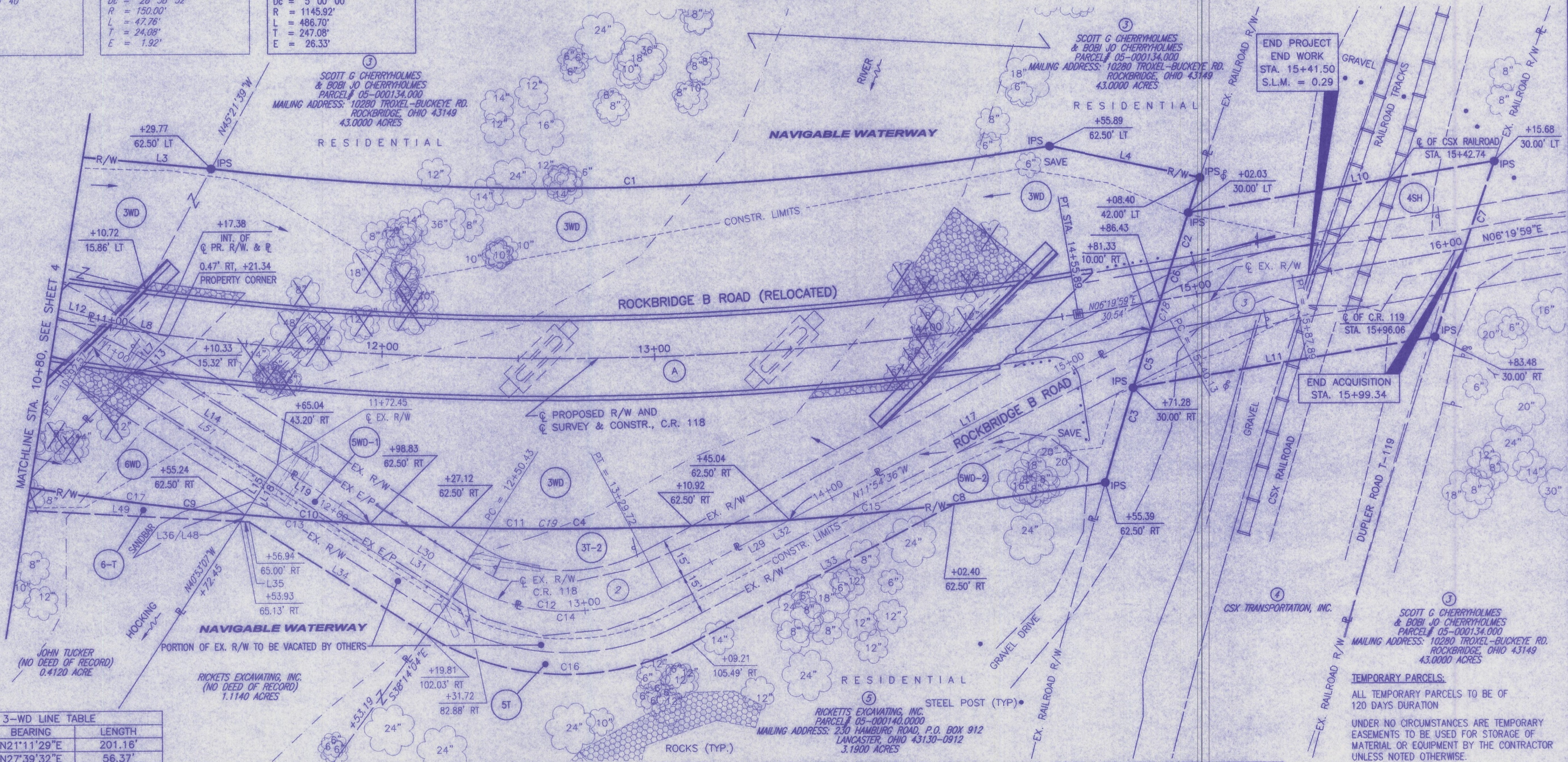
- IRON PIN SET
- IPS (3/4" HOLLOW STEEL PIPE, 30" LONG WITH A PLASTIC CAP STAMPED 'CEC, INC.')
- PROPOSED ADJUSTABLE CENTERLINE MONUMENT

FEDERAL PROJECT NO. 22433
 STATE JOB NO. 15+99.34
 R/W DESIGNER: SLL
 S.I.L. REVIEWER: WAA

RIGHT OF WAY PLAN
 STA. 10+80.00 TO 15+99.34

HOC - C.R. 118 - 0.14

5 / 5



3-WD LINE TABLE		
LINE	BEARING	LENGTH
L3	N21°11'29"E	201.16'
L4	N27°39'32"E	56.37'
L5	S11°54'36"E	149.68'
L6	S48°39'49"W	102.91'
L7	N29°54'38"W	18.53'
L8	S30°00'00"W	107.40'
4-SH LINE TABLE		
LINE	BEARING	LENGTH
L10	N06°19'59"E	113.65'
L11	S06°19'59"W	112.21'
5WD-1 LINE TABLE		
LINE	BEARING	LENGTH
L18	N40°53'07"W	21.85'
L19	N48°39'49"E	40.27'
5WD-2 LINE TABLE		
LINE	BEARING	LENGTH
L17	N11°54'36"W	149.68'
6-WD LINE TABLE		
LINE	BEARING	LENGTH
L12	N30°00'00"E	234.30'
L13	S29°54'38"E	18.53'
L14	N48°39'49"E	62.65'
L15	S40°53'07"E	21.85'

3-WD CURVE TABLE				
CURVE	CENTRAL ANGLE	RADIUS	DIRECTION	CHORD LENGTH
C1	16°18'22"	1083.42'	N14°29'10"E	307.29'
C2	01°11'24"	2822.38'	S56°09'55"E	58.62'
C4	07°18'38"	1208.42'	S15°31'50"W	154.08'
4-SH CURVE TABLE				
CURVE	CENTRAL ANGLE	RADIUS	DIRECTION	CHORD LENGTH
C5	00°40'56"	2822.38'	N56°52'25"W	33.61'
C6	00°41'11"	2822.38'	N56°11'21"W	33.82'
C7	01°25'59"	2722.38'	S55°26'46"E	68.09'
5WD-1 CURVE TABLE				
CURVE	CENTRAL ANGLE	RADIUS	DIRECTION	CHORD LENGTH
C10	02°10'46"	1208.42'	S20°16'33"W	45.97'
5WD-2 CURVE TABLE				
CURVE	CENTRAL ANGLE	RADIUS	DIRECTION	CHORD LENGTH
C3	01°11'21"	2822.38'	S57°21'17"E	58.57'
C8	05°31'04"	1208.42'	S09°07'00"W	116.37'
LEAD IN COURSE CURVE TABLE				
CURVE	CENTRAL ANGLE	RADIUS	DIRECTION	CHORD LENGTH
C18	00°13'40"	2822.38'	S56°38'47"E	11.22'

6-WD CURVE TABLE				
CURVE	CENTRAL ANGLE	RADIUS	DIRECTION	CHORD LENGTH
C9	03°52'56"	1208.42'	S23°18'24"W	81.86'
3T-2 CURVE TABLE				
CURVE	CENTRAL ANGLE	RADIUS	DIRECTION	CHORD LENGTH
C11	07°18'38"	1208.42'	N15°31'50"E	154.08'
C12	60°34'25"	75.00'	S18°22'36"W	75.65'
5-T CURVE TABLE				
CURVE	CENTRAL ANGLE	RADIUS	DIRECTION	CHORD LENGTH
C13	02°10'46"	1208.42'	N20°16'33"E	45.97'
C14	60°34'25"	75.00'	N18°22'36"E	75.65'
C15	02°52'05"	1208.42'	N10°26'29"E	60.48'
C16	59°41'10"	98.00'	S17°55'59"W	97.53'
6-T CURVE TABLE				
CURVE	CENTRAL ANGLE	RADIUS	DIRECTION	CHORD LENGTH
C17	03°52'56"	1208.42'	N23°18'24"E	81.86'
LEAD IN COURSE CURVE TABLE				
CURVE	CENTRAL ANGLE	RADIUS	DIRECTION	CHORD LENGTH
C19	12°49'41"	1208.42'	S12°46'19"W	269.99'

3T-2 LINE TABLE		
LINE	BEARING	LENGTH
L29	S11°54'36"E	52.89'
L30	S48°39'49"W	37.72'
5-T LINE TABLE		
LINE	BEARING	LENGTH
L31	N48°39'49"E	37.72'
L32	N11°54'36"W	52.89'
L33	S11°54'36"E	108.83'
L34	S48°28'14"W	76.93'
L35	S19°00'24"W	3.19'
L36	N40°53'07"W	2.97'
6-T LINE TABLE		
LINE	BEARING	LENGTH
L48	S40°53'07"E	2.97'
L49	S19°00'24"W	87.73'
LEAD IN COURSE LINE TABLE		
LINE	BEARING	LENGTH
L51	N48°39'49"E	2.97'

TEMPORARY PARCELS:
 ALL TEMPORARY PARCELS TO BE OF 120 DAYS DURATION
 UNDER NO CIRCUMSTANCES ARE TEMPORARY EASEMENTS TO BE USED FOR STORAGE OF MATERIAL OR EQUIPMENT BY THE CONTRACTOR UNLESS NOTED OTHERWISE.

NOTES:
 THE STATIONS FOR THE PROPERTY LINES SHOWN USE THE Q OF EXISTING RIGHT-OF-WAY AS REFERENCE Q
 STATION AND OFFSETS USE THE Q OF PROPOSED RIGHT-OF-WAY, SURVEY AND CONST. AS REFERENCE Q UNLESS OTHERWISE NOTED.
 FOR LOCATION OF ALL PROPOSED ADJUSTABLE CENTERLINE MONUMENTS, SEE CENTERLINE PLAT; SHT 1 OF 5

REVISION	DATE	DESCRIPTION

FIELD REVIEW BY: _____ DATE: _____
 OWNERSHIP VERIFIED BY: _____ DATE: _____
 DATE OF COMPLETION: AUGUST 6, 2002

Drawing: P:\Proj\25440\25440.dwg