

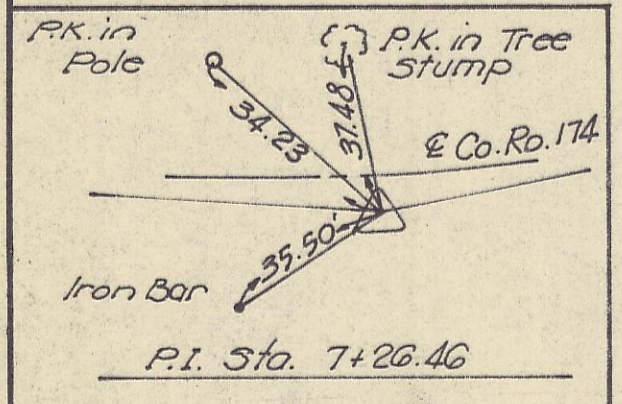
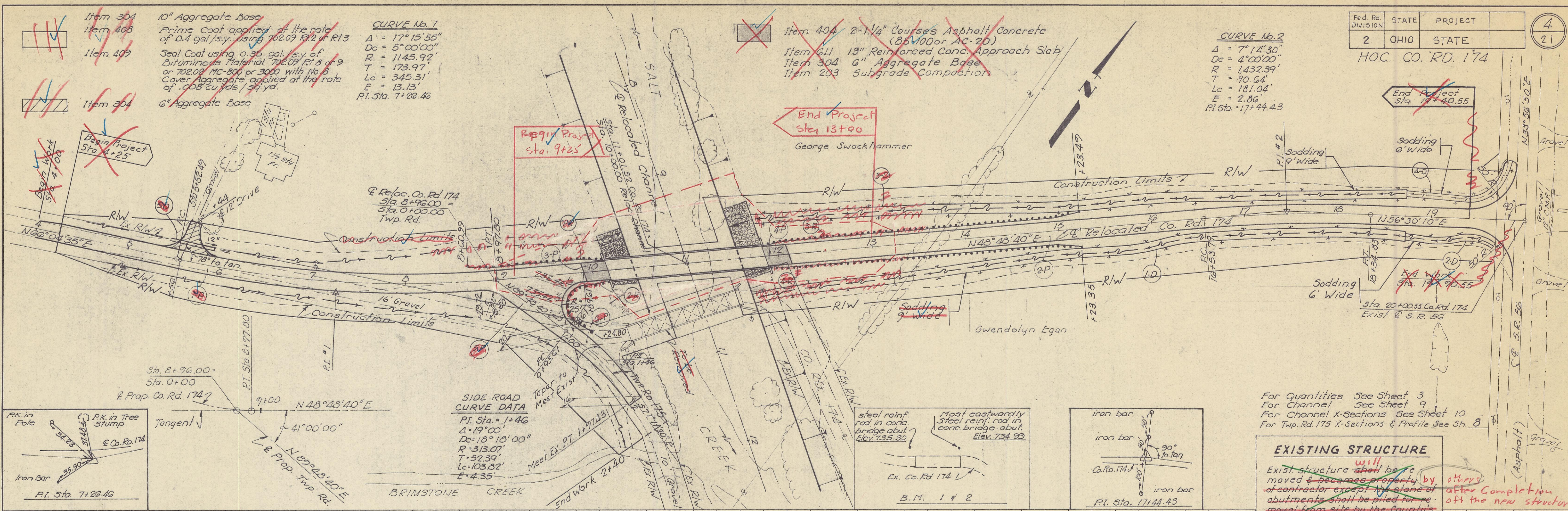
- Item 304 10" Aggregate Base
- Item 408 Prime Coat applied at the rate of 0.4 gal./sq. yd. using 702.09 RI2 of RI3
- Item 409 Seal Coat using 0.35 gal./sq. yd. of Bituminous Material 702.09 RI 8 or 9 or 702.02 MC-800 or 3000 with No. 8 Cover Aggregate applied at the rate of .008 cu. yds./sq. yd.
- Item 304 6" Aggregate Base

CURVE No. 1
 $\Delta = 17^\circ 15' 55''$
 $Dc = 5^\circ 00' 00''$
 $R = 1145.92'$
 $T = 173.97'$
 $Lc = 345.31'$
 $E = 13.13'$
 P.I. Sta. 7+26.46

- Item 40A 2-1/4" Courses Asphalt Concrete (35M00 or AC-20)
- Item 611 13" Reinforced Conc. Approach Slab
- Item 304 6" Aggregate Base
- Item 203 Subgrade Compaction

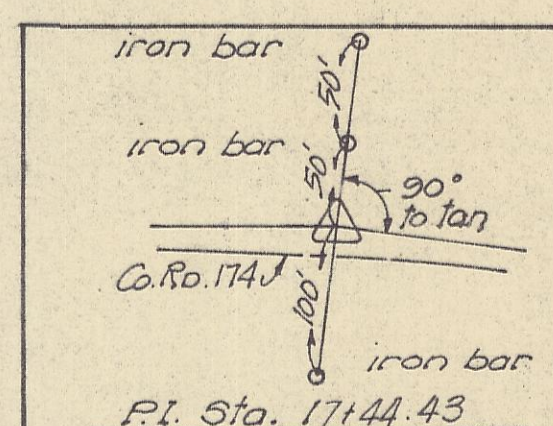
CURVE No. 2
 $\Delta = 7^\circ 14' 30''$
 $Dc = 4^\circ 00' 00''$
 $R = 1432.39'$
 $T = 90.64'$
 $Lc = 181.04'$
 $E = 2.86'$
 P.I. Sta. 17+44.43

DATE _____
 BY _____
 SURVEYED _____
 NOTE BOOK _____
 ALIGNMENT CHECKED _____
 RT. OF WAY CHECKED _____
 NO. _____



SIDE ROAD CURVE DATA
 P.I. Sta. = 1+46
 $\Delta = 19^\circ 00''$
 $Dc = 18^\circ 10' 00''$
 $R = 313.07'$
 $T = 52.39'$
 $Lc = 103.82'$
 $E = 4.35'$

steel reinf. rod in conc. bridge abut. Elev. 735.30
 Most eastwardly steel reinf. rod in conc. bridge abut. Elev. 734.99



For Quantities See Sheet 3
 For Channel See Sheet 9
 For Channel X-Sections See Sheet 10
 For Twp. Rd. 175 X-Sections & Profile See Sh. 8

EXISTING STRUCTURE

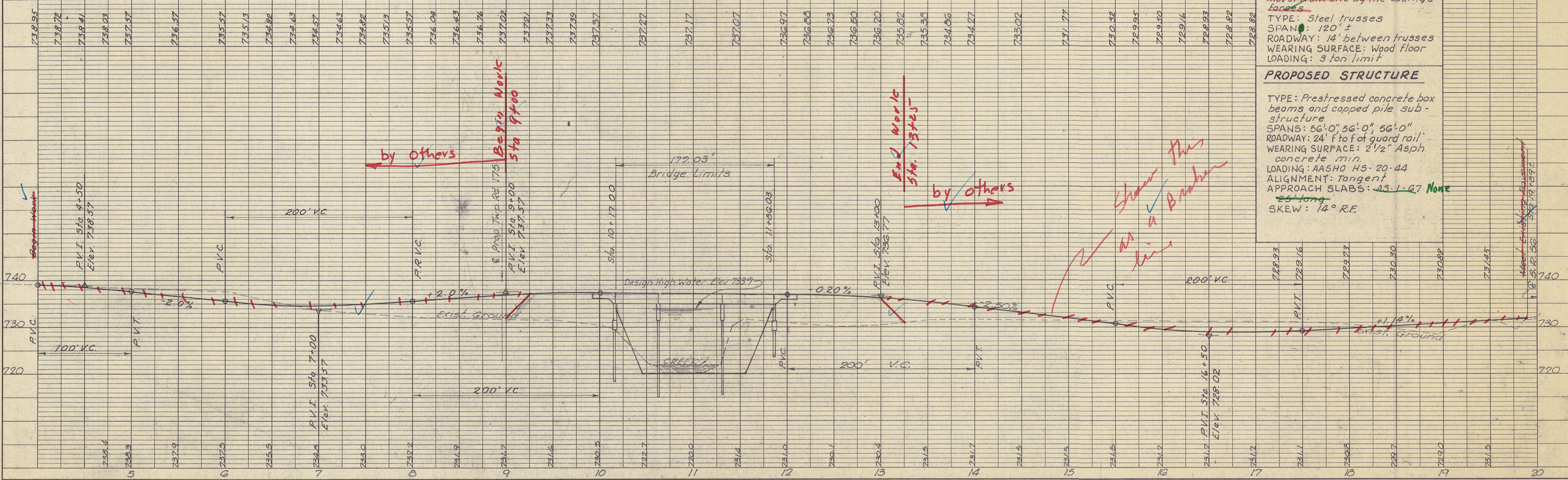
Exist. structure will be moved & becomes property of contractor except the stone of abutments shall be piled for removal from site by the County's forces after completion of the new structure.

TYPE: Steel trusses
 SPAN: 120' ±
 ROADWAY: 14' between trusses
 WEARING SURFACE: Wood floor
 LOADING: 3 ton limit

PROPOSED STRUCTURE

TYPE: Prestressed concrete box beams and capped pile sub-structure
 SPANS: 56'-0", 56'-0", 56'-0"
 ROADWAY: 24' f to f of guard rail
 WEARING SURFACE: 2 1/2" Asph. concrete min.
 LOADING: AASHTO HS-20-44
 ALIGNMENT: Tangent
 APPROACH SLABS: 45'-1-07 None
 45' long
 SKEW: 14° R.E.

DATE _____
 BY _____
 SURVEYED _____
 NOTE BOOK _____
 GRADES CHECKED _____
 B. M. NOTED _____
 STRUCTURE NOTATIONS C/P/C _____
 NO. _____



by others

Begin Work Sta. 9+00

End Work Sta. 13+25

by others

Show this as a Bank