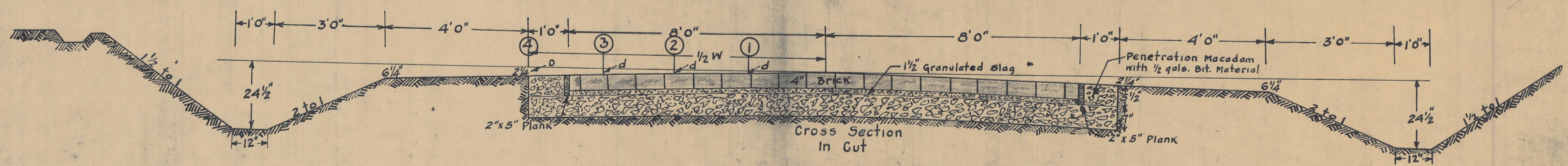
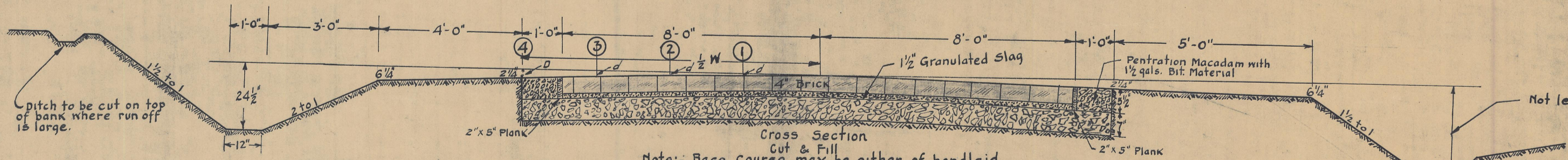


TYPICAL CROSS SECTIONS

I.G.H. 155 SEC. K.
HOCKING COUNTY.



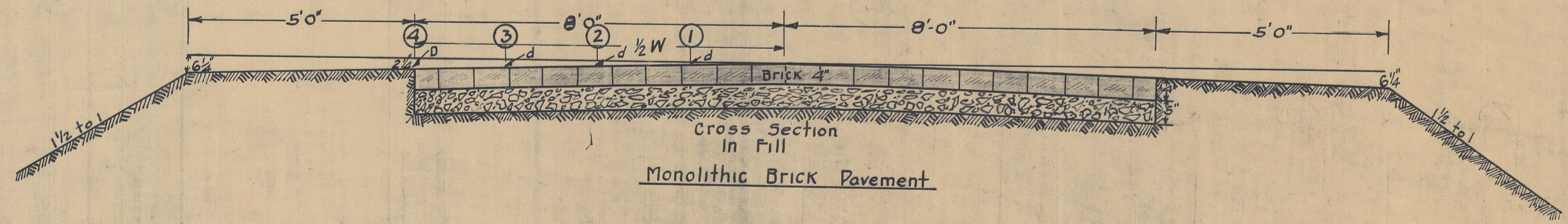
Brick Pavement Rolled Foundation



Pitch to be cut on top of bank where run off is large.

Not less than 30"

A ditch to be cut beyond toe of fill, where ground slopes toward same.



Detail of Crown

Width	d at 1	d at 2	d at 3	d at 4
18'0"	$\frac{3}{8} D$	$\frac{6}{8} D$	$\frac{12}{8} D$	$\frac{18}{8} D$
	$\frac{3}{8}$ "	$\frac{3}{4}$ "	$1\frac{1}{2}$ "	$2\frac{1}{4}$ "