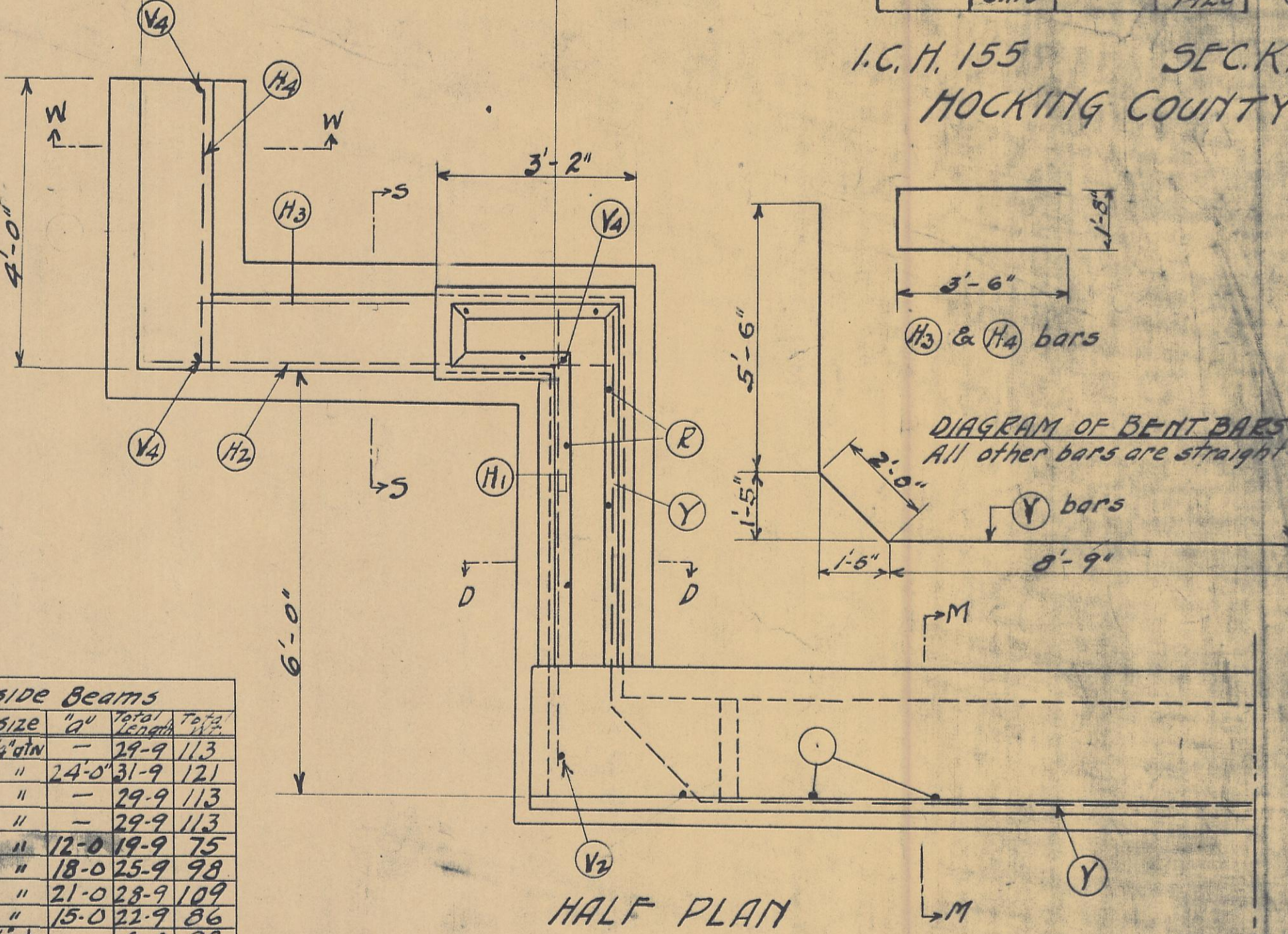
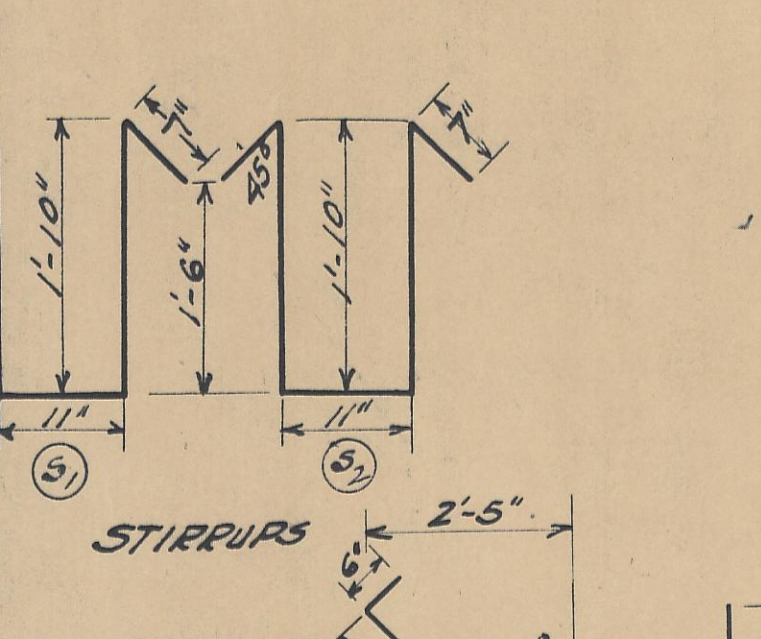
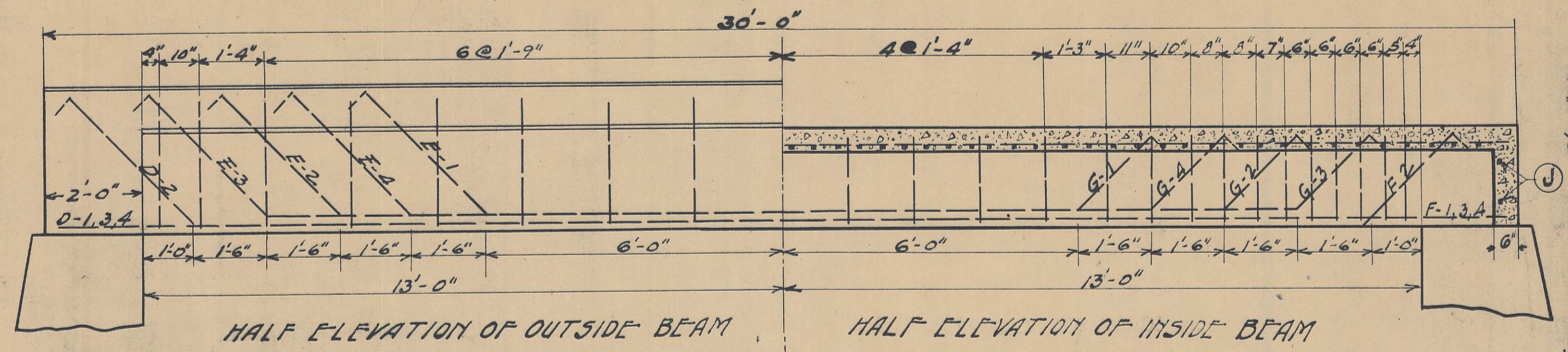
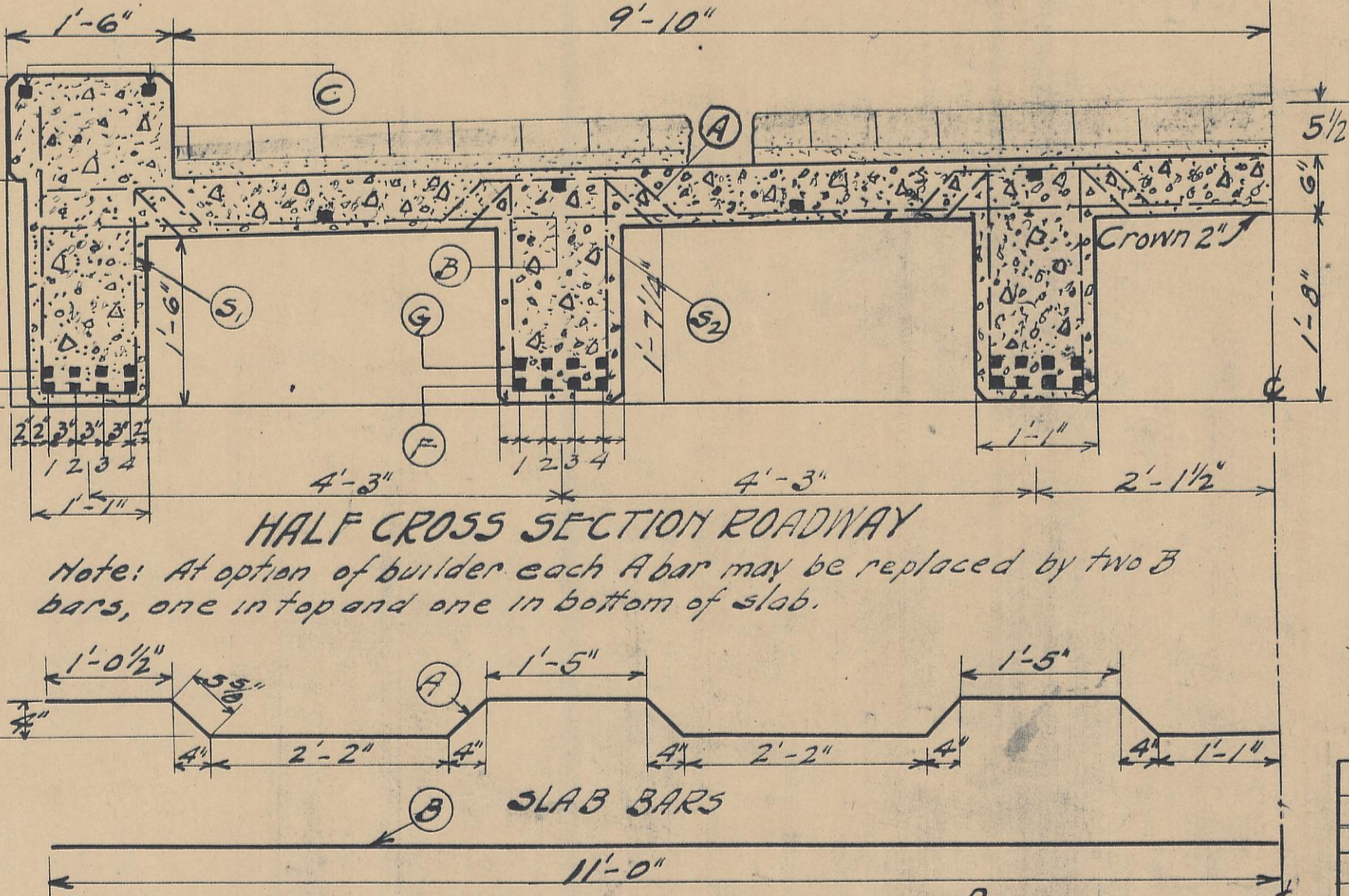


I.C.H. 155 SEC.K.  
 HOCKING COUNTY



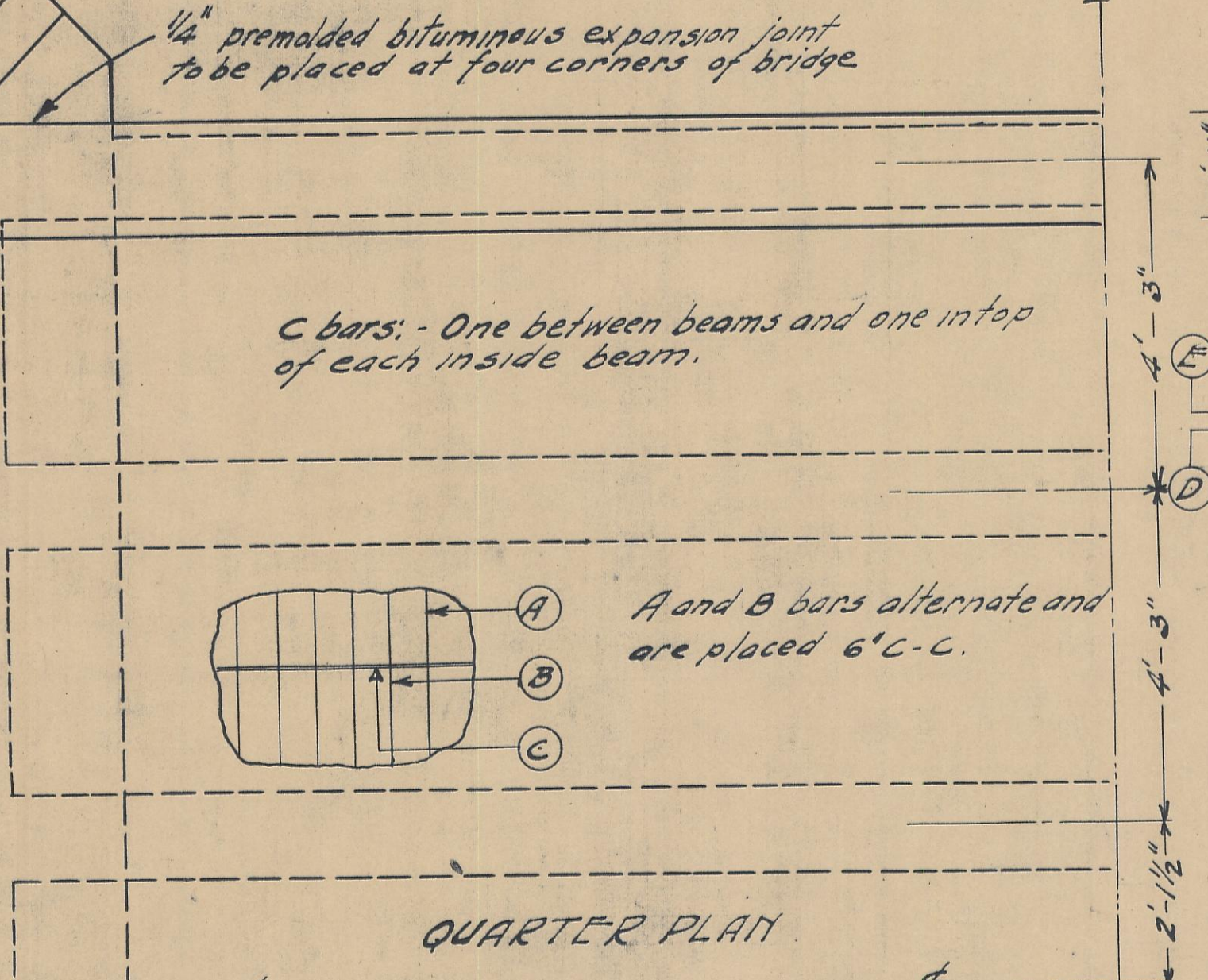
Outside Beams

No.	Mark	Size	Length	Total
2	D-1	1/2" dia	24'-0"	48'-0"
2	D-2	"	24'-0"	48'-0"
2	D-3	"	24'-0"	48'-0"
2	D-4	"	24'-0"	48'-0"
2	F-1	"	12'-0"	24'-0"
2	F-2	"	18'-0"	36'-0"
2	F-3	"	21'-0"	42'-0"
2	F-4	"	15'-0"	30'-0"
34	S	1/4" dia	6'-0"	204'-0"



Inside Beams

No.	Mark	Size	Length	Total
4	F-1	1/2" dia	24'-0"	96'-0"
4	F-2	"	24'-0"	96'-0"
4	F-3	"	24'-0"	96'-0"
4	F-4	"	24'-0"	96'-0"
4	G-1	"	12'-0"	48'-0"
4	G-2	"	18'-0"	72'-0"
4	G-3	"	21'-0"	84'-0"
4	G-4	"	15'-0"	60'-0"
124	S	1/4" dia	5'-9"	708'-0"

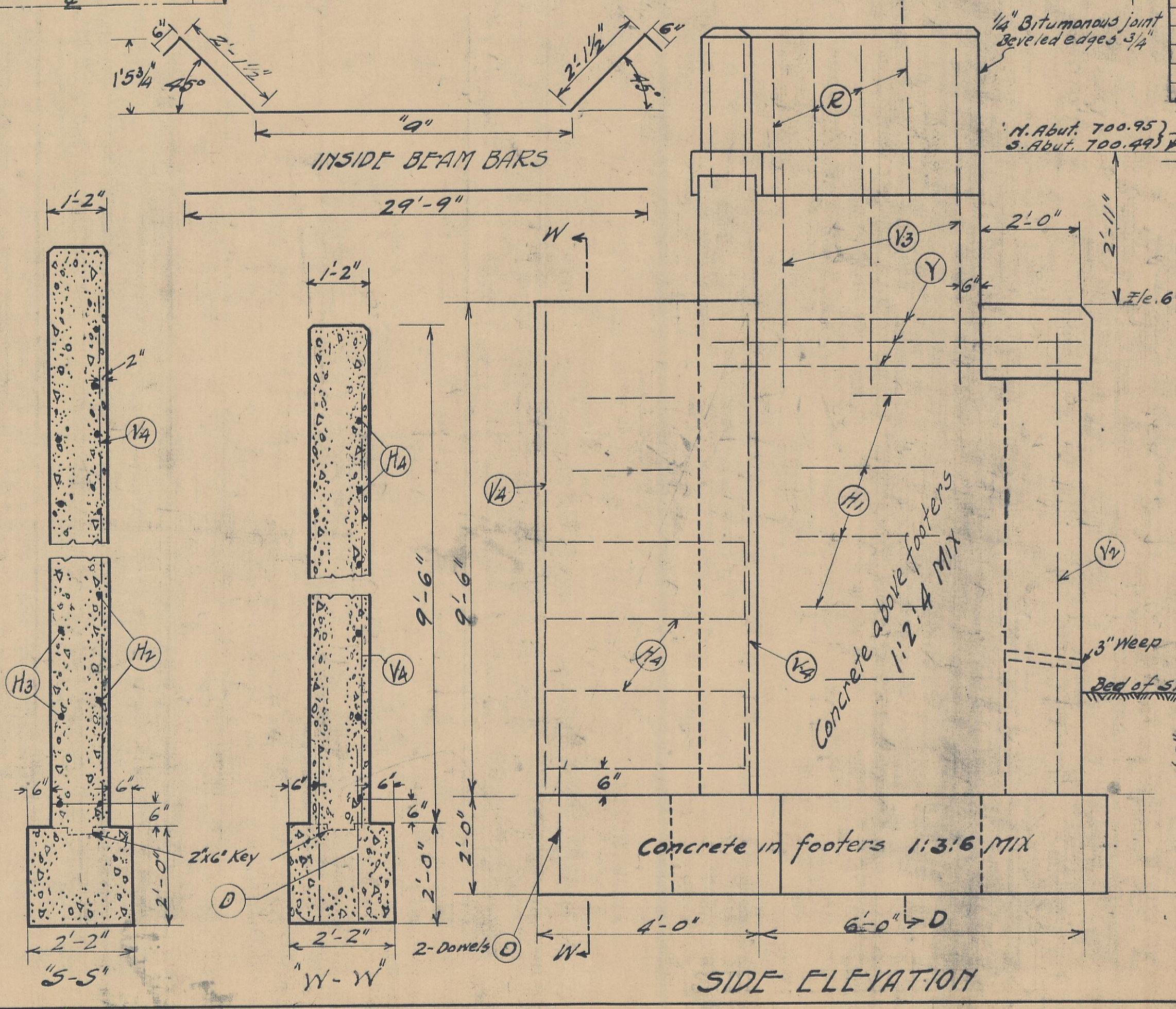
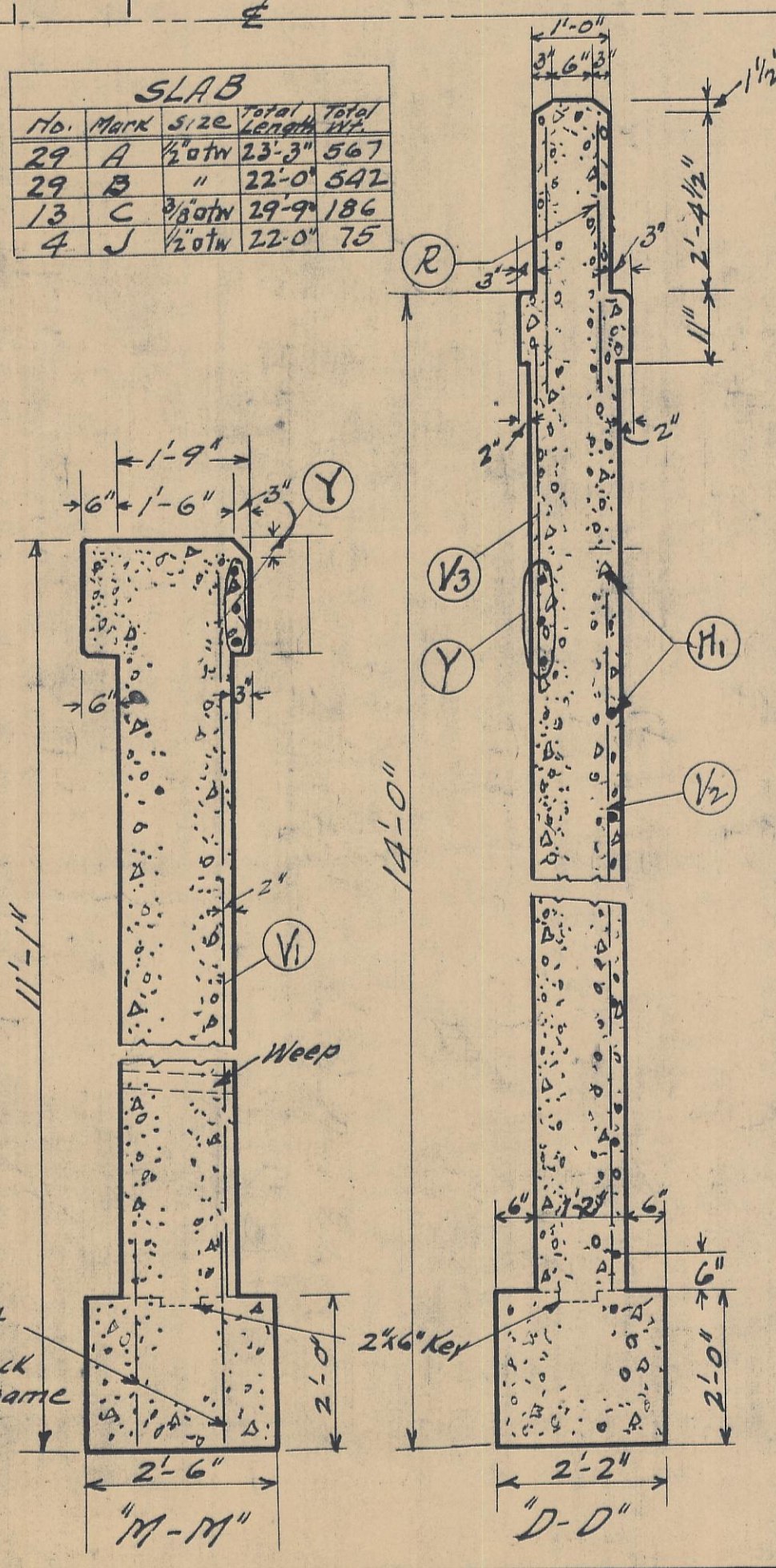


SLAB

No.	Mark	Size	Length	Total
29	A	1/2" dia	23'-3"	667'-9"
29	B	"	22'-0"	642'-0"
13	C	1/4" dia	29'-9"	186'-0"
4	J	1/2" dia	22'-0"	88'-0"

Substructure Reinforcing Bars Quantities for One Abutment

Bar	A	H <sub>1</sub>	H <sub>2</sub>	H <sub>3</sub>	V <sub>1</sub>	V <sub>2</sub>	V <sub>3</sub>	V <sub>4</sub>	Y	R	D
Size	3/8"	3/8"	3/8"	3/8"	3/8"	3/8"	3/8"	3/8"	3/8"	3/8"	3/8"
Length	6'-9"	6'-9"	6'-9"	6'-9"	6'-9"	6'-9"	6'-9"	6'-9"	6'-9"	6'-9"	6'-9"
Spacing	2'-0"	2'-0"	2'-0"	2'-0"	2'-0"	2'-0"	2'-0"	2'-0"	2'-0"	2'-0"	2'-0"
Qty	10	12	6	6	9	4	6	6	13	14	22



Estimated Quantities Superstructure  
 1-2-4 Concrete 28.2 Cu. Yds.  
 Reinforcing Steel 4775 lbs.  
 Type E Railing 60 feet.  
 Substructure.  
 1-2-4 Concrete 53.8 Cu. Yds.  
 1-3-6 " 17.4 " "  
 Reinforcing Steel 1006 lbs.  
 EX Coration 200 Cu. Yds.  
 Note: Do not scale this drawing; use marked dimensions.  
 The number & spacing of bars must be obtained from the table & not from the drawing.

HALF FRONT ELEVATION  
**CONCRETE BEAM BRIDGE**  
 SPAN 26 FT. ROADWAY 20 FT.  
 STATION 183+86. GRADE -2.0 ft.  
 Surveyed & Drawn by NMM August 1920.  
 STATE HIGHWAY DEPT.