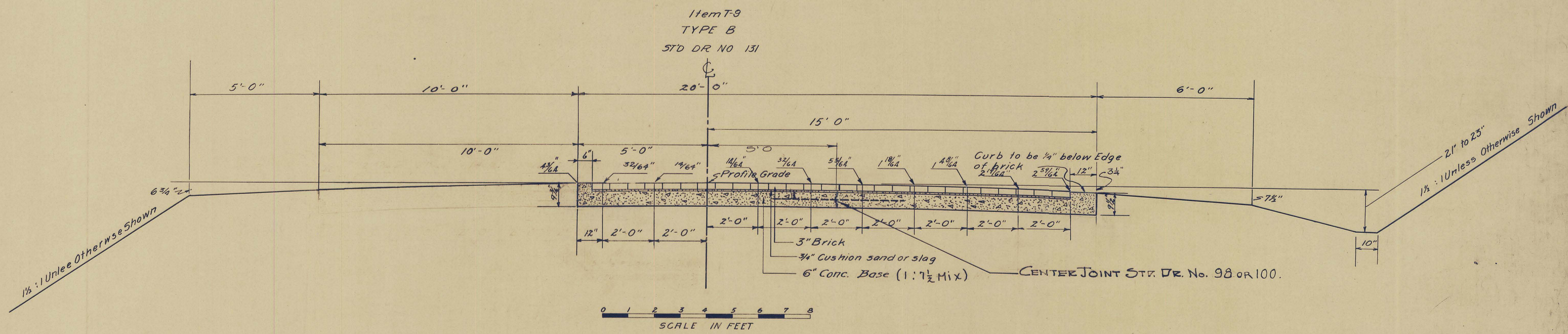


S.H. 360 Sec. D (Part)
Hocking County

TYPICAL SECTION



BUILDING UNDER TRAFFIC

The Contractor shall so plan and conduct his operations that the road will be kept open to traffic at all times.

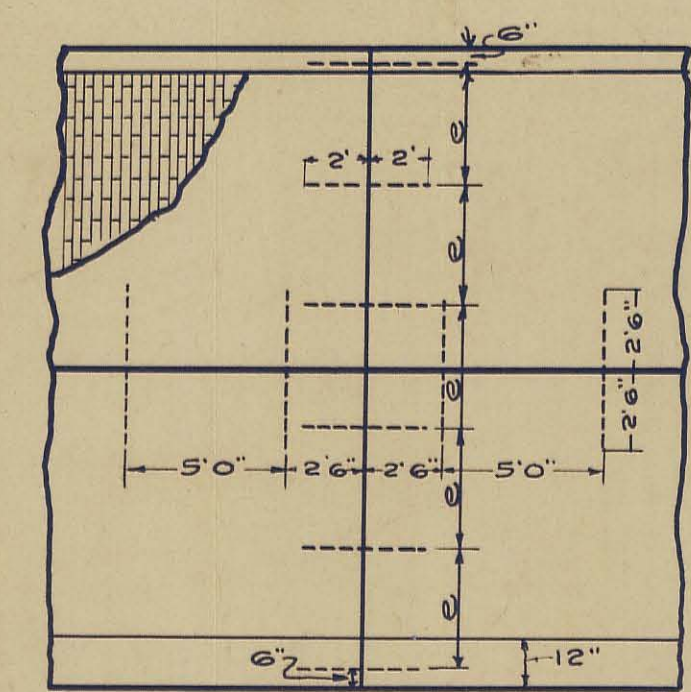
The traffic will be carried on the left side of the grade and restricted to one way travel. At such places where the traffic is restricted to one way, the contractor shall have a guard or signalman at each end of such one way lane, who shall be on duty at all hours of the day and night to guide and direct traffic.

The contractor shall maintain such one way traffic lanes by daily dragging and by the applications of T-2 material, crushed stone, gravel or slag as directed by the Engineer.

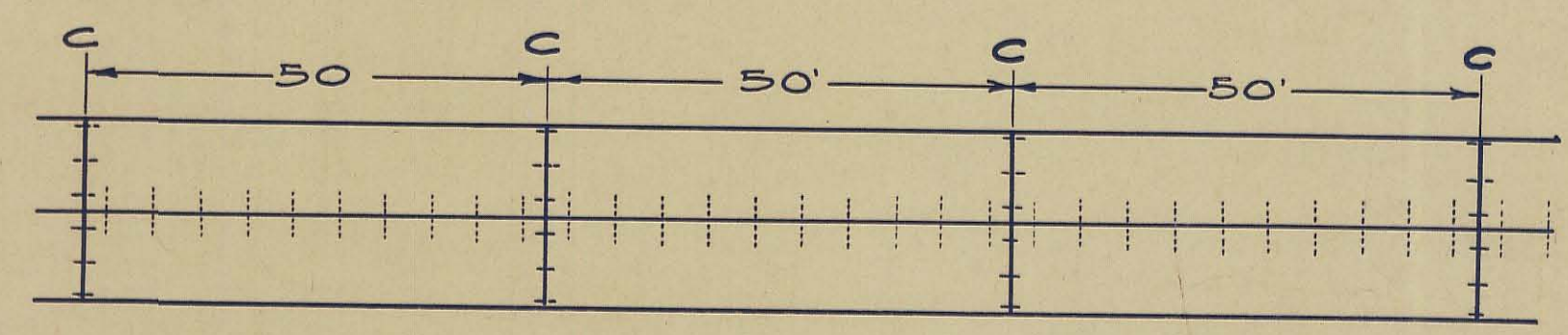
As an alternate to the above, ~~the Contractor may close the road between Iron Street and the Logan Grove Road and detour traffic over the first street on the right.~~ the contractor may also close the road from Sta. 24+00 to the end of the job and detour traffic over the old brick road at the left provided that he secures the necessary right of way and builds the necessary approaches to the old road.

Wherever and at any time the detour or one way traffic lane becomes dusty, the contractor shall apply calcium chloride as directed by the engineer.

If the contract is not completed by Nov. 15, 1932, and an extension of time has been granted, the contractor shall cease all operations and any portions where the present pavement has been destroyed, he shall pave the same with Item T-2 material, 6 inches deep and 20 feet wide and turn the same over to be maintained by the State forces until April 15, 1933 when operations will be resumed by the contractor.



DETAIL OF CONTRACTION JOINT.



C = CONTRACTION JOINTS.

DETAIL SHOWING CENTER JOINT AND FREQUENCY OF CONTRACTION JOINT.
STAND. DES. Nos. 95-96; 98 or 100.