

SPECIAL CATCH BASIN  
STATIONS 5+62.45 & 5+99.15

Fed. Rd. Dist. No.	State	Federal Aid Project No.	Fiscal Year	3 4
10	OHIO		1938	

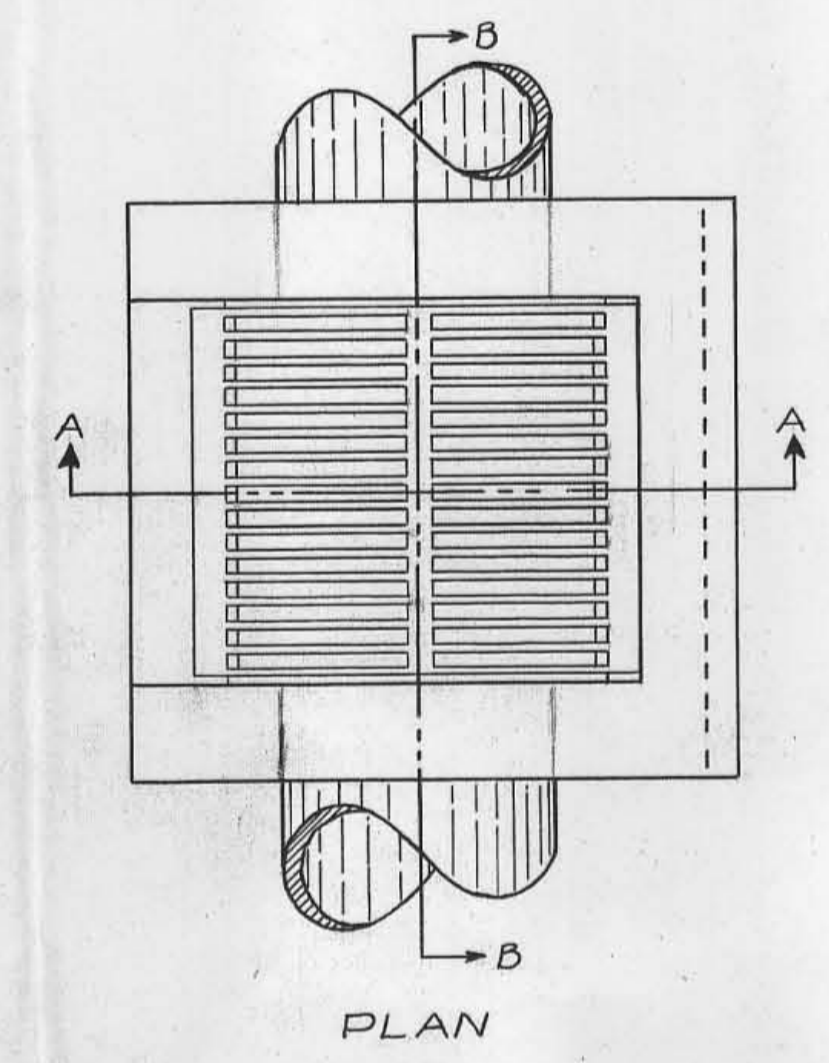
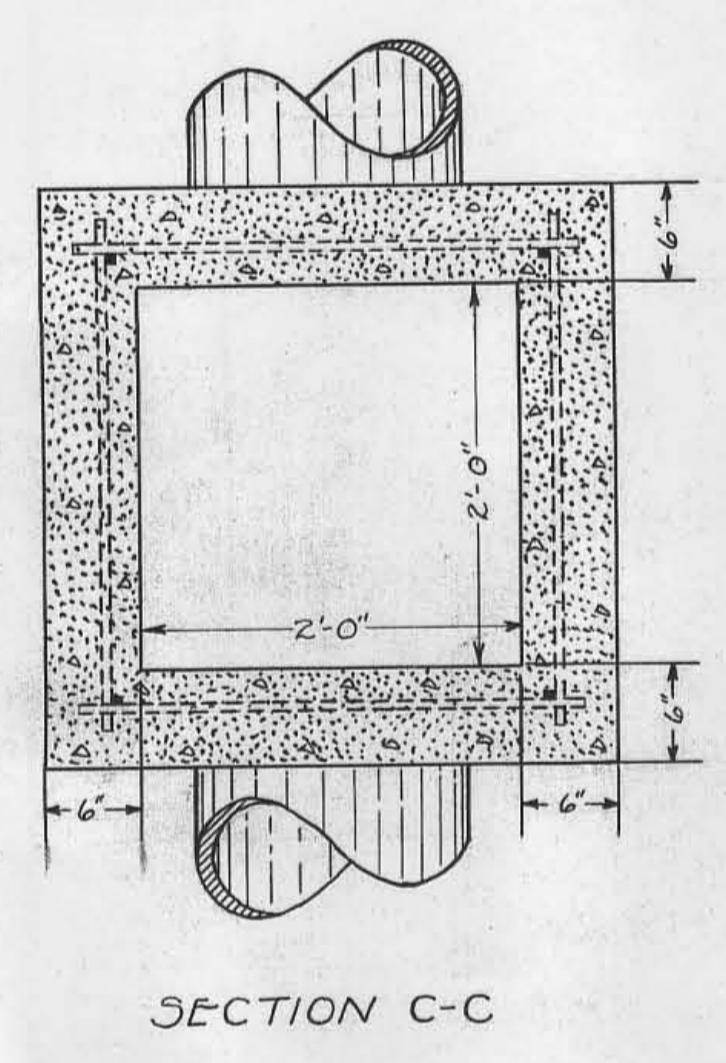
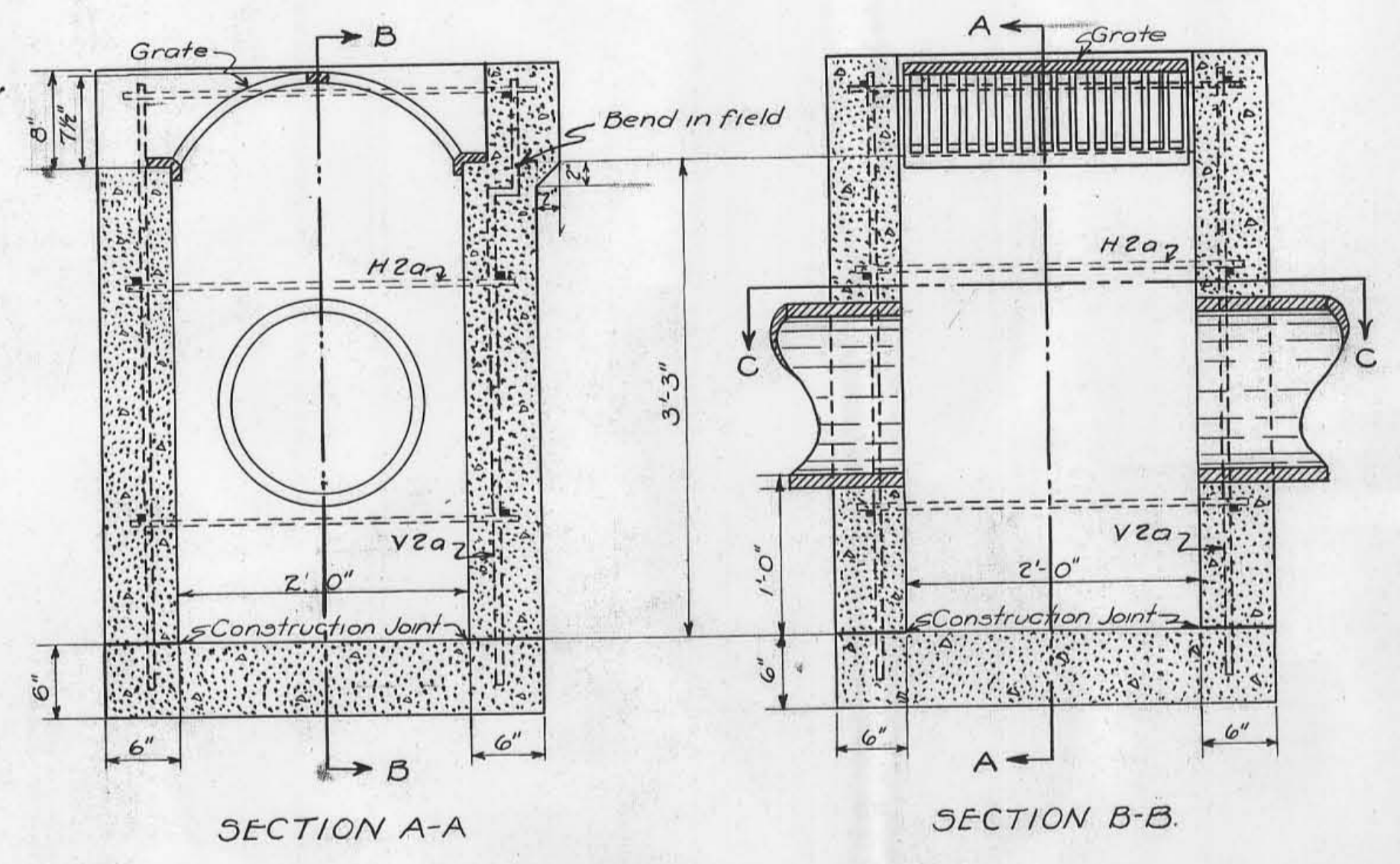
S.H. 360 Sec. K (pl).  
HOCKING COUNTY

NOTES

GRATING shall be the same as shown for Standard No. 1-2 Catch Basin.

CONCRETE to be 1-5 1/2 mix.

REINFORCE side walls with 1/2" deformed bars horizontal in each side spaced as shown 2'-8" long and 1/2" deformed bars in each corner 4'-0" long.



Mark	Size	No.	Length	Weight
H2a	1/2" φ	11	2'-8"	20
V2a	1/2" φ	4	4'-0"	11
Total				31

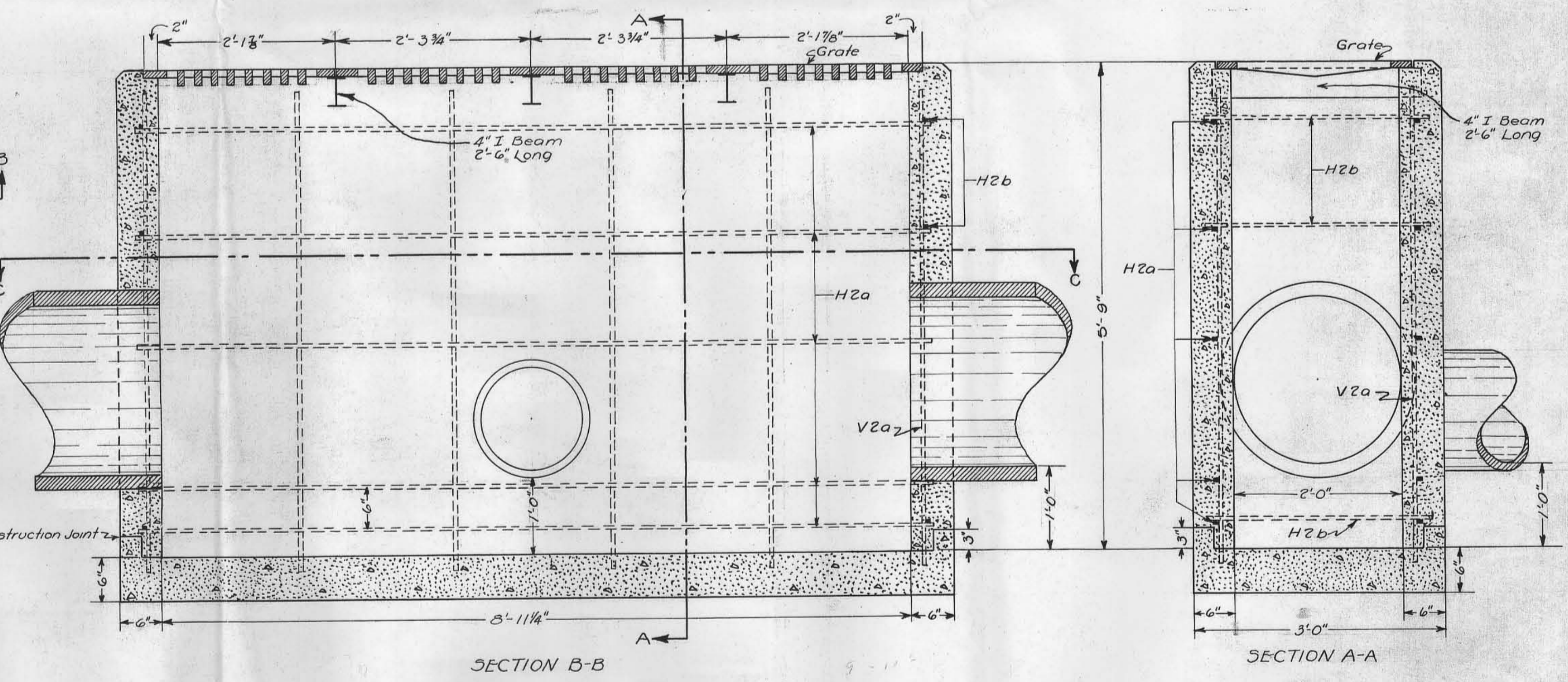
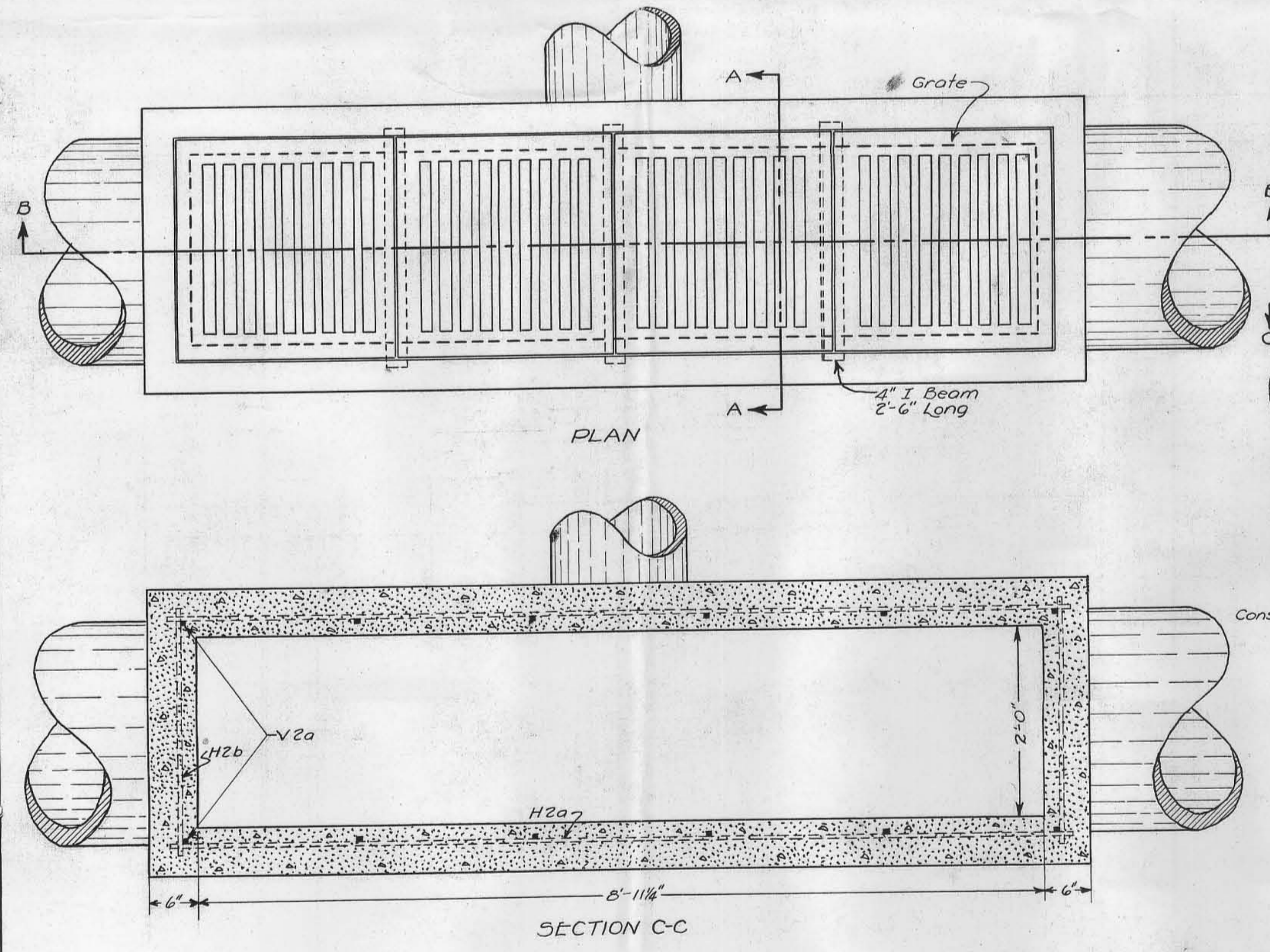
Steel list is for one catch basin only.

ESTIMATED QUANTITIES\*

Excavation	8 Cu. Yds.
Concrete 1-5 1/2 Mix	11.6 Cu. Yds.
Reinforcing Steel	62 Lbs.
Castings	2 Each

\* Quantities are for two catch basins.

SPECIAL CATCH BASIN  
STATION 6+



Mark	Size	No.	Length	Weight
H2a	1/2" φ	10	3'-6"	63
H2b	1/2" φ	6	2'-8"	11
V2a	1/2" φ	12	5'-10"	47
				121

ESTIMATED QUANTITIES

Excavation	14 Cu. Yds.
Concrete 1-5 1/2 Mix	2.9 Cu. Yds.
Reinforcing Steel	121 Lbs.
Castings	4 Each
4" I Beam 2'-6" Long	3 Each

NOTES

GRATING shall be the same as shown for Standard No. 8-E Catch Basin.

CONCRETE to be 1-5 1/2 mix.

REINFORCE sidewalls with 1/2" deformed bars horizontal in each side spaced as shown and vertical in each corner, other vertical bars in side walls spaced as shown.