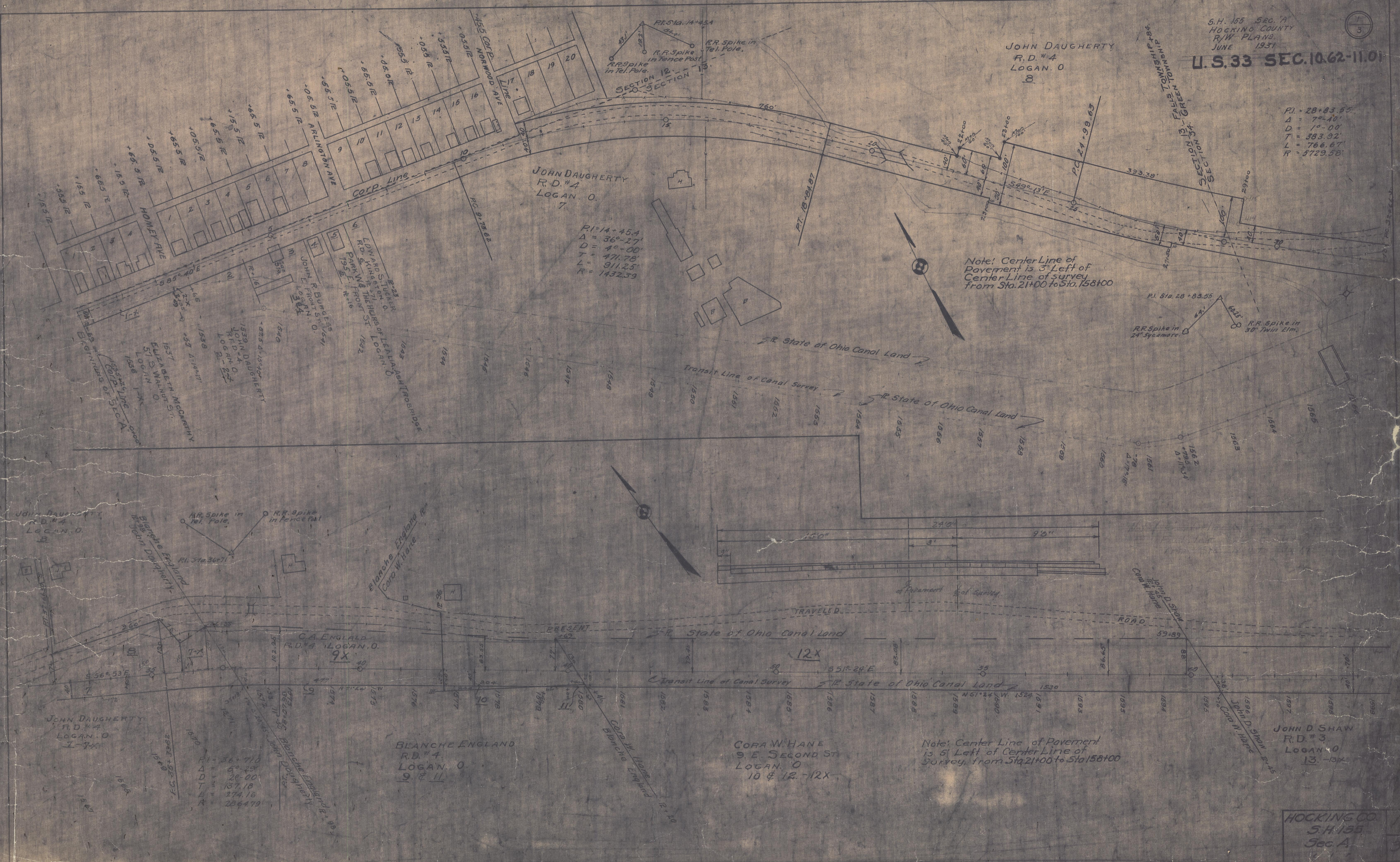


JOHN DAUGHERTY  
 R.D. #4  
 LOGAN, O.  
 8

PI = 28+83.55  
 Δ = 70° 10'  
 D = 1° 00'  
 T = 383.92'  
 L = 766.61'  
 R = 5729.58'



PI = 14+45.4  
 Δ = 36° 27'  
 D = 4° 00'  
 T = 471.78'  
 L = 911.25'  
 R = 1432.39'

Note: Center Line of  
 Pavement is 3' Left of  
 Center Line of Survey  
 from Sta. 21+00 to Sta. 158+00

Note: Center Line of Pavement  
 is 5' Left of Center Line of  
 Survey, from Sta. 21+00 to Sta. 158+00

PI = 36+71.0  
 Δ = 6° 23'  
 D = 20° 00'  
 T = 137.18  
 L = 274.16  
 R = 2864.73'

BLANCHE ENGLAND  
 R.D. #4  
 LOGAN, O.  
 9

CORA W. HANE  
 9 E. SECOND ST.  
 LOGAN, O.  
 10 & 12-12X

JOHN D. SHAW  
 R.D. #3  
 LOGAN, O.  
 13-13X