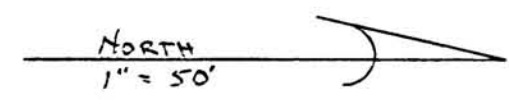
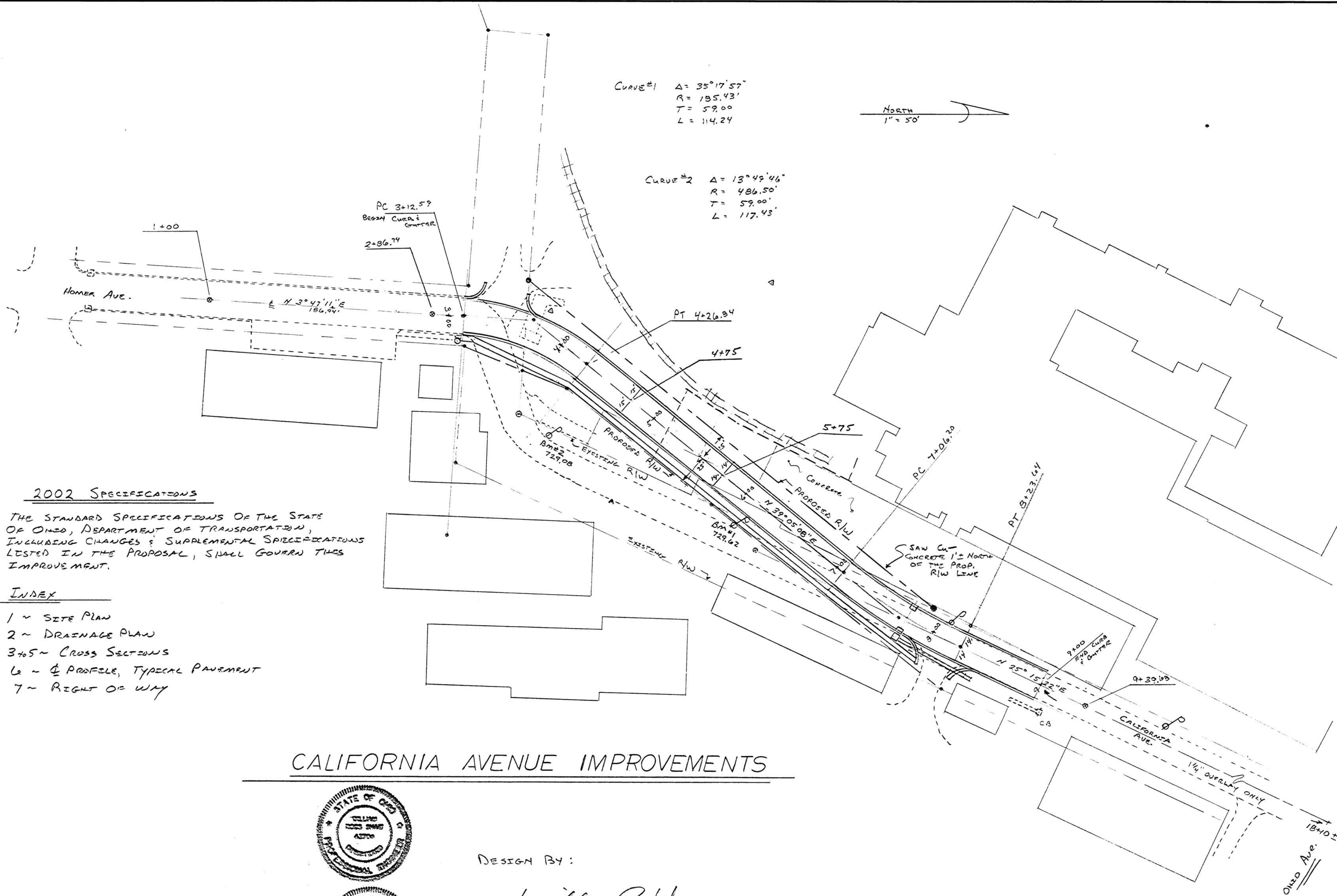


CURVE #1
 $\Delta = 35^{\circ}17'57''$
 $R = 185.43'$
 $T = 59.00'$
 $L = 114.24'$



CURVE #2
 $\Delta = 13^{\circ}49'46''$
 $R = 486.50'$
 $T = 59.00'$
 $L = 117.43'$



2002 SPECIFICATIONS

THE STANDARD SPECIFICATIONS OF THE STATE OF OHIO, DEPARTMENT OF TRANSPORTATION, INCLUDING CHANGES & SUPPLEMENTAL SPECIFICATIONS LISTED IN THE PROPOSAL, SHALL GOVERN THIS IMPROVEMENT.

INDEX

- 1 ~ SITE PLAN
- 2 ~ DRAINAGE PLAN
- 3 to 5 ~ CROSS SECTIONS
- 6 ~ $\frac{1}{4}$ PROFILE, TYPICAL PAVEMENT
- 7 ~ RIGHT OF WAY

CALIFORNIA AVENUE IMPROVEMENTS



DESIGN BY:

William R. Shaw 6-3-08
 HOCKING COUNTY ENGINEER
 PE # 43706
 PS # 6650

TOLERANCES (EXCEPT AS NOTED)	REVISIONS			CALIFORNIA AVE. IMPROVEMENTS		
	NO.	DATE	BY	SITE PLAN		
DECIMAL	1					
±	2					
FRACTIONAL	3			DRAWN BY	SCALE	MATERIAL
±	4			CHK'D	DATE	DRAWING NO.
ANGULAR	5			TRACED	APP'D	1 / 7
±						