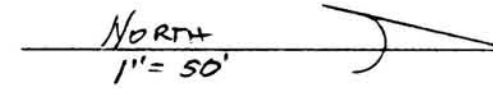
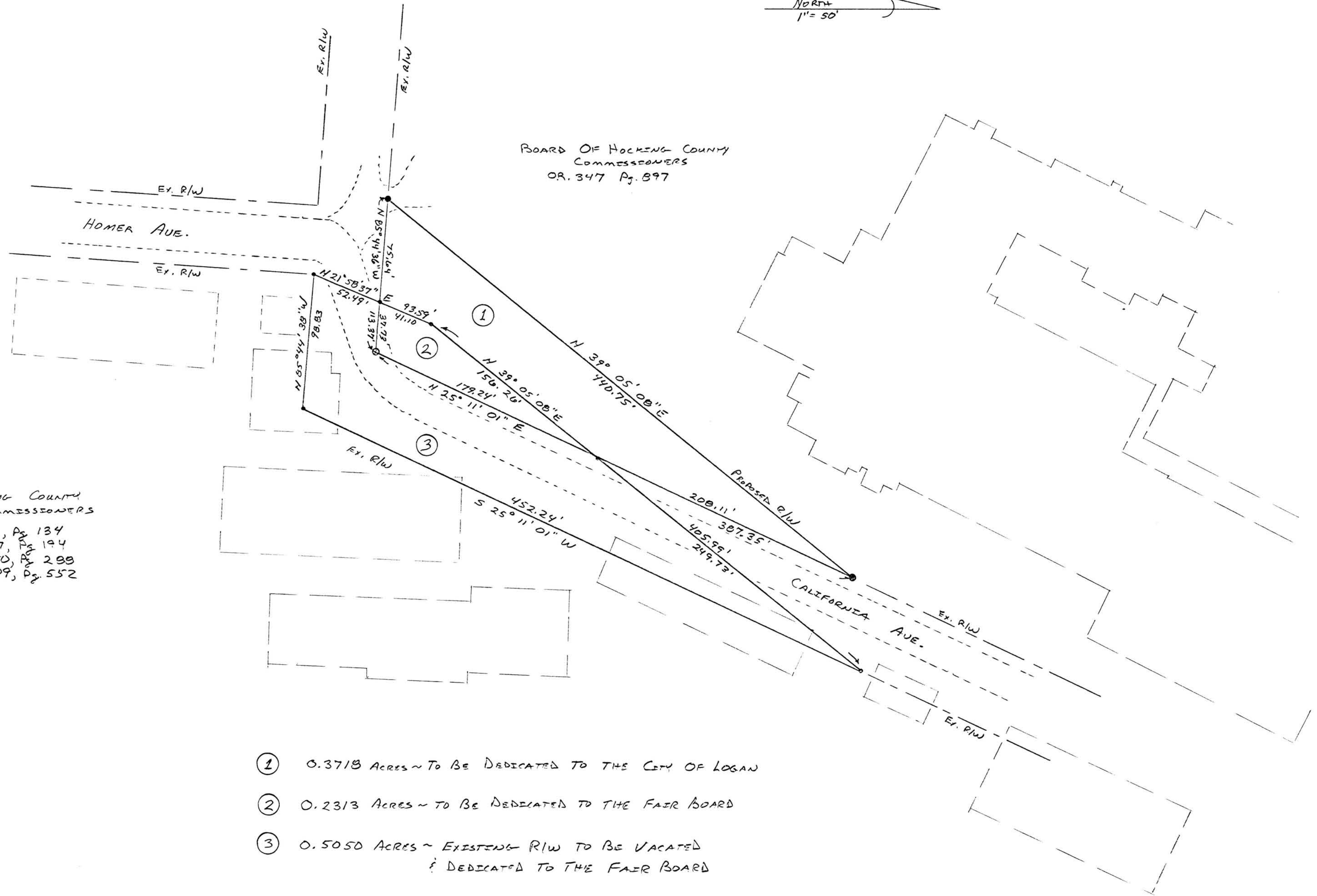


SEE REVISED SURVEY



BOARD OF HOCKING COUNTY
COMMISSIONERS
OR. 347 Pg. 897



HOCKING COUNTY
COMMISSIONERS
D.B. 66, Pg. 134
D.B. 217, Pg. 194
D.B. 150, Pg. 288
D.B. 109, Pg. 552

- ① 0.3718 Acres ~ TO BE DEDICATED TO THE CITY OF LOGAN
- ② 0.2313 Acres ~ TO BE DEDICATED TO THE FAIR BOARD
- ③ 0.5050 Acres ~ EXISTING RIW TO BE VACATED
& DEDICATED TO THE FAIR BOARD

TOLERANCES (EXCEPT AS NOTED)	REVISIONS			CALIFORNIA AVE. IMPROVEMENTS		
	NO.	DATE	BY			
DECIMAL	1			RIGHT OF WAY		
±	2					
FRACTIONAL	3			DRAWN BY	SCALE	MATERIAL
±	4			CHK'D	DATE	DRAWING NO.
ANGULAR	5			TRACED	APP'D	7/7
±						