

S.H. 360 - SEC. "LOGAN (PI)"  
- HOCKING COUNTY -

**EXISTING BRICK PAV. REMOVED & RELAID**

From Station	To Station	Location	Width	Removed for Reuse SQ. YDS.	Relaid SQ. YDS.
45+01.5	45+18	183' Rt. to 213' Rt.	3.0'	5.5	5.5
46+66	46+96	177' Rt. to 192' Rt.	1.5'	5.0	5.0
46+66	46+96	182' Lt. to 212' Lt.	3.0'	10.0	10.0
50+95	51+19.5	176' Rt. to 181' Rt.	1.5'	4.1	4.1
50+95	51+19.5	175' Lt. to 190' Lt.	1.5'	4.1	4.1
54+70	55+00	184' Rt. to 234' Rt.	5.0'	16.6	16.6
55+66	55+69	£	34.4'	11.5	11.5
	45+85	Lt.		10.0	10.0
	47+15	Rt.		2.0	2.0
	48+60	Rt.		2.0	2.0
	49+55	Rt.		3.0	3.0
Total				73.8	73.8

**CONCRETE CURB & GUTTER.**

From Station	To Station	Side	Removal and Disposal Lin. Ft.	Curb & Gutter as per plan Lin. Ft.
54+45.6	54+62.5	Rt.	16.9'	16.9'
48+61.3	48+75.8	Lt.	14.5'	14.5'
50+07.5	50+11.0	Lt.	3.5'	3.5'
50+85.8	50+91.2	Lt.	5.4'	5.4'
55+06.0	55+21.8	Lt.	15.8'	15.8'
52+79	53+62.3	Lt.	83.3	
Total			139.4	56.1

PI = 21+86.4  
Δ = 10°12'21"

**RESETTING MANHOLES**

No.	Station	Side	Units
4-M	46+36	£	1
5-M	51+10.4	£	1
6-M	54+60.5	£	1
7-M	54+89	Lt.	1
Total			4

**RESETTING VALVE BOXES.**

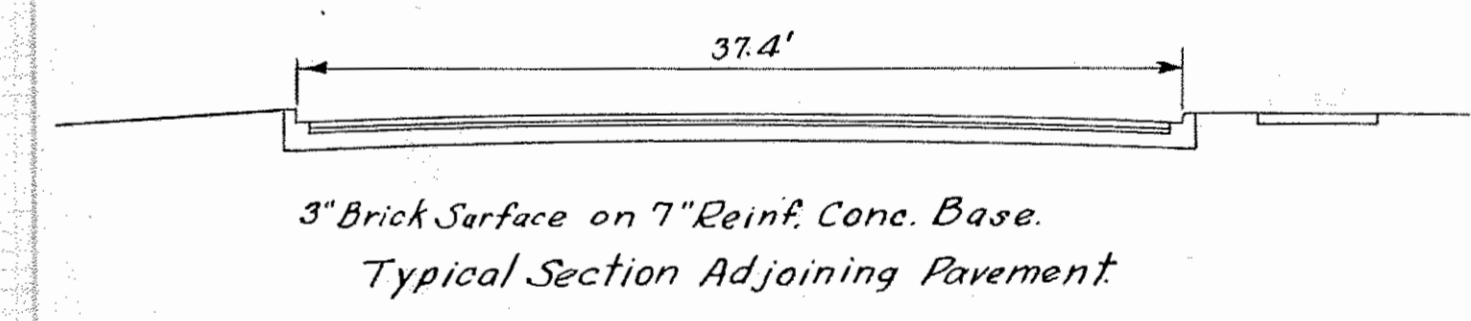
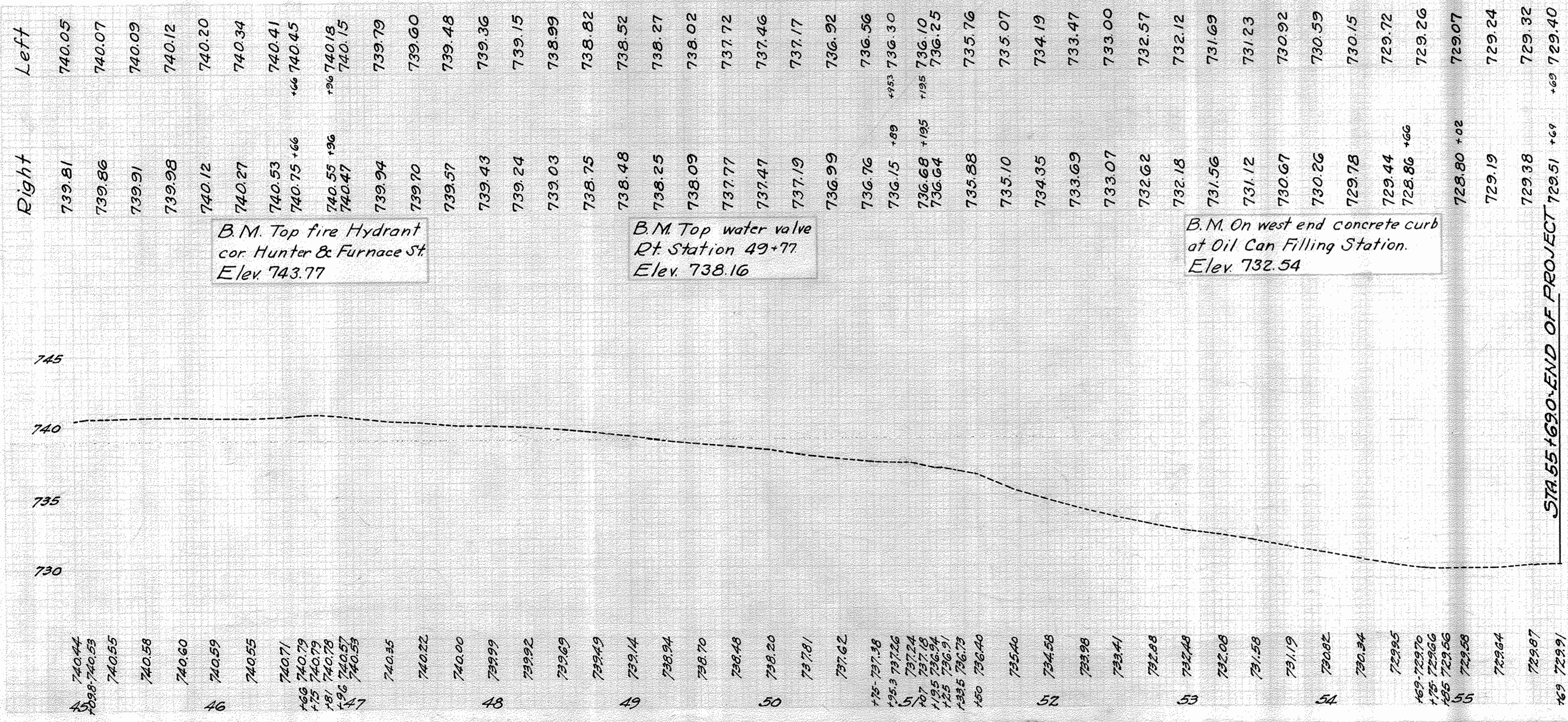
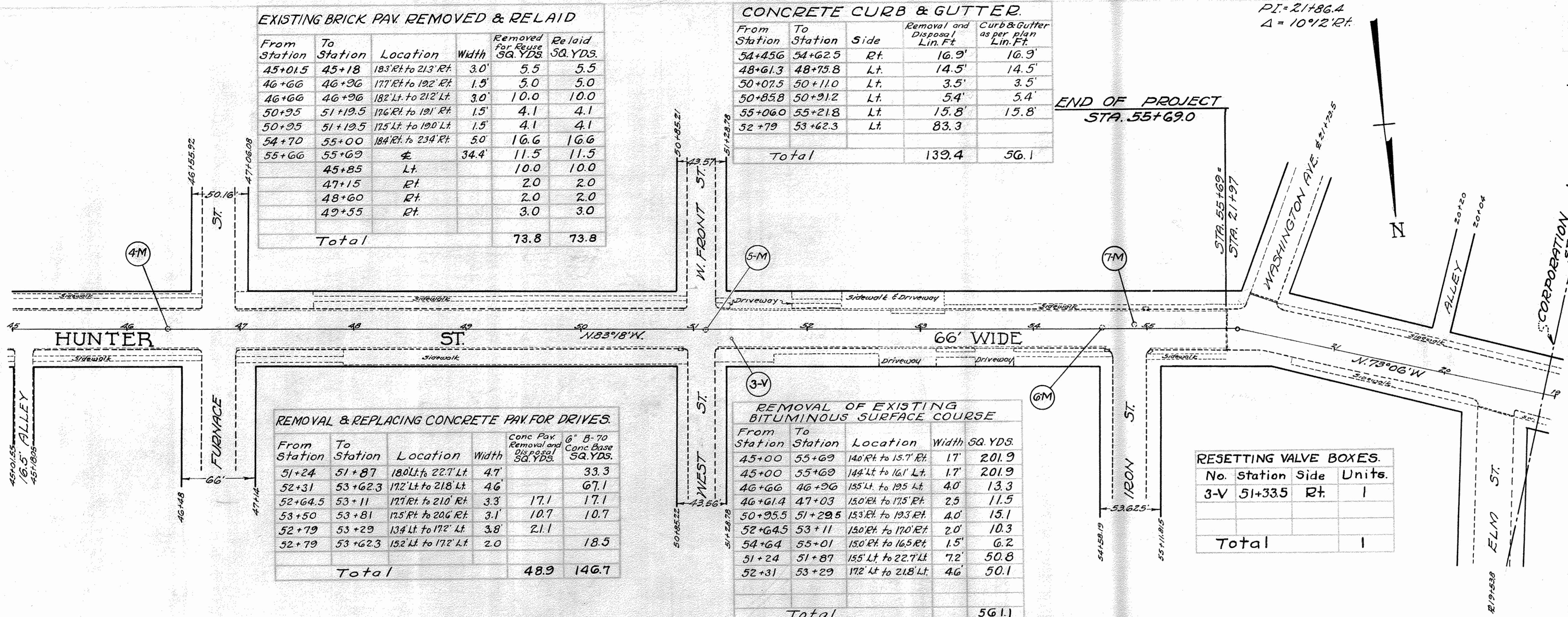
No.	Station	Side	Units.
3-V	51+33.5	Rt.	1
Total			1

**REMOVAL & REPLACING CONCRETE PAV FOR DRIVES.**

From Station	To Station	Location	Width	Conc Pav Removal and Disposal SQ. YDS.	6" B-70 Conc Base SQ. YDS.
51+24	51+87	180' Lt. to 227' Lt.	4.7'		33.3
52+31	53+62.3	172' Lt. to 218' Lt.	4.6'		67.1
52+64.5	53+11	177' Rt. to 210' Rt.	3.3'	17.1	17.1
53+50	53+81	175' Rt. to 206' Rt.	3.1'	10.7	10.7
52+79	53+29	134' Lt. to 172' Lt.	3.8'	2.1	
52+79	53+62.3	152' Lt. to 172' Lt.	2.0'		18.5
Total				489	146.7

**REMOVAL OF EXISTING BITUMINOUS SURFACE COURSE**

From Station	To Station	Location	Width	SQ. YDS.
45+00	55+69	146' Rt. to 157' Rt.	17'	201.9
45+00	55+69	144' Lt. to 161' Lt.	17'	201.9
46+66	46+96	155' Lt. to 195' Lt.	4.0'	13.3
46+61.4	47+03	150' Rt. to 175' Rt.	2.5'	11.5
50+95.5	51+29.5	153' Rt. to 193' Rt.	4.0'	15.1
52+64.5	53+11	150' Rt. to 170' Rt.	2.0'	10.3
54+64	55+01	150' Rt. to 165' Rt.	1.5'	6.2
51+24	51+87	155' Lt. to 227' Lt.	7.2'	50.8
52+31	53+29	172' Lt. to 218' Lt.	4.6'	50.1
Total				561.1



B.M. CROSS ON SIDEWALK - RT. OF STA. 56+00±  
ELEV. 730.28