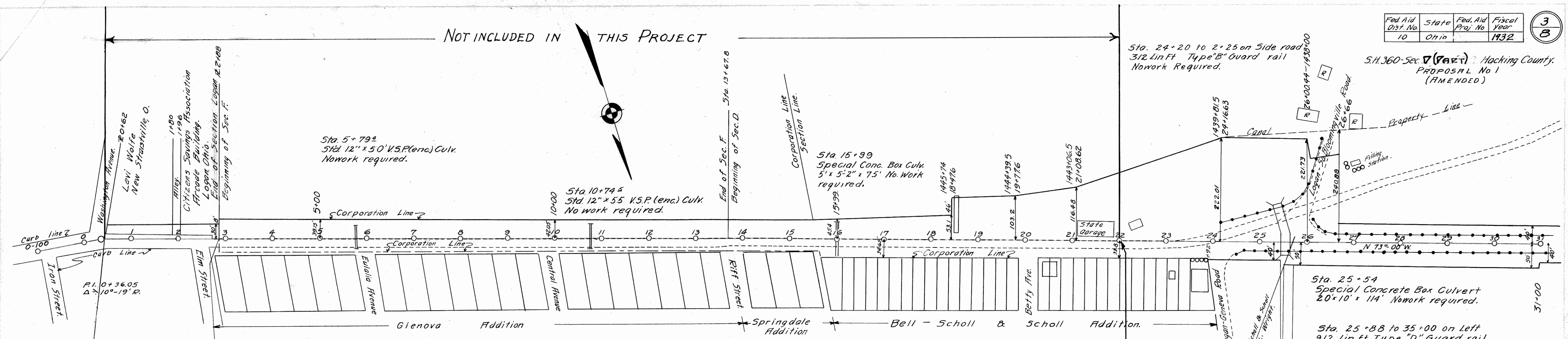


S.H. 360-Sec. 7 (Part) Hocking County.
PROPOSAL No 1
(AMENDED)

NOT INCLUDED IN THIS PROJECT



Sta. 5+79.2
Std. 12" x 50' V.S.P. (enc.) Culv.
Nowork required.

Sta. 10+74.5
Std. 12" x 55' V.S.P. (enc.) Culv.
No work required.

Sta. 15+99
Special Conc. Box Culv.
5' x 5'-2" x 75'. No Work
required.

Sta. 24+20 to 2+25 on Side road
312 Lin. Ft. Type "B" Guard rail
Nowork Required.

Sta. 25+54
Special Concrete Box Culvert
20' x 10' x 11' Nowork required.

Sta. 25+88 to 35+00 on Left
912 Lin. ft. Type "D" Guard rail.
Nowork required

Sta. 0+42 to Sta. 2+88
take up and Relay 137 Sq. Yds.
of Brick, between curb
of Proposed Pavement
and Present Curb, Right
of E. 5' wide.

Brick to be Taken up
Sta. 0+42 to 2+88 Width 24'
" 2+88 to 13+67.8 " 18'
" 13+67.8 to 22+50 " 15'

Note:
Removal of Present Brick Pavement From
Sta. 0+42 to 22+50. Remove 4286 Sq. Yds. of
Brick pavement. The same shall be hauled to points
designated by the engineer, which haul shall not
average more than 3/4 miles, and shall as approved by
the engineer be piled in neat & orderly piles. Such piles
shall not be hacked throughout, but the enclosing walls
of such piles shall be hand laid and hacked, the
cost of haulage and hacking of Brick shall be included
in unit price bid for removal of brick.

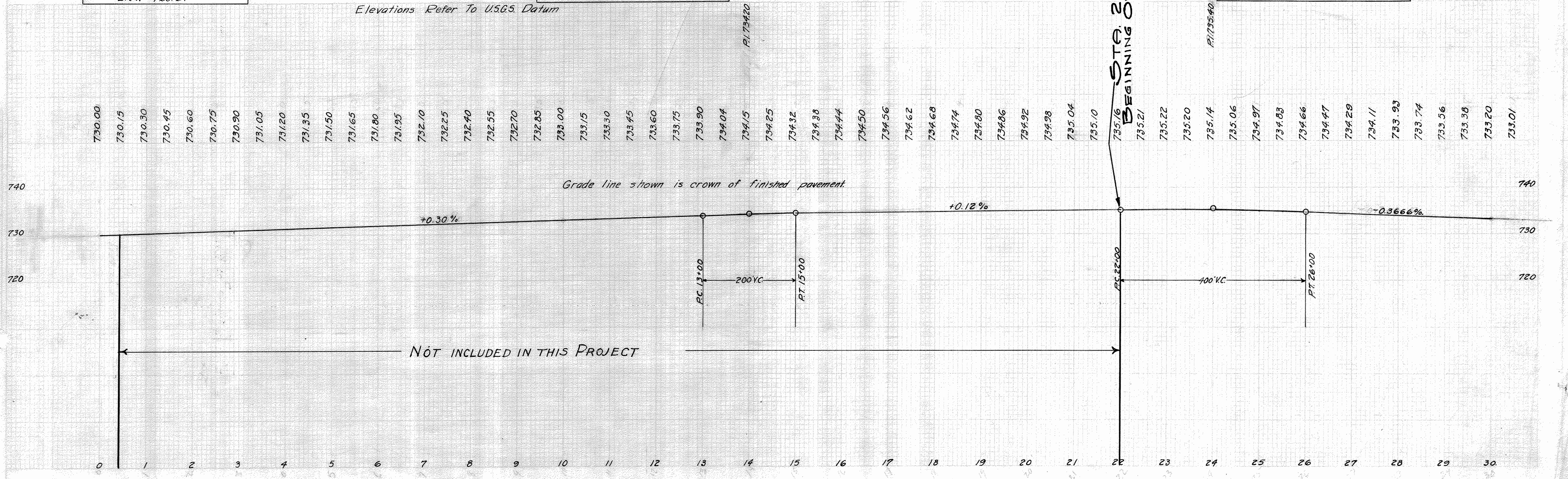
B.M. Sta. 0+50
R/W Marker Lt. Side of Road
Elev. 728.24

B.M. Sta. 16+00
Bronze Plate Lt. Culv. H.W.
Elev. 726.77

CURVE TABLES ON SHEET # 7

B.M. Sta. 25+54
Bronze Plate in Culv. H.W.
Elev. 734.22

Elevations Refer To U.S.G.S. Datum



NOT INCLUDED IN THIS PROJECT

STG. 22+00
BEGINNING OF PROJECT.