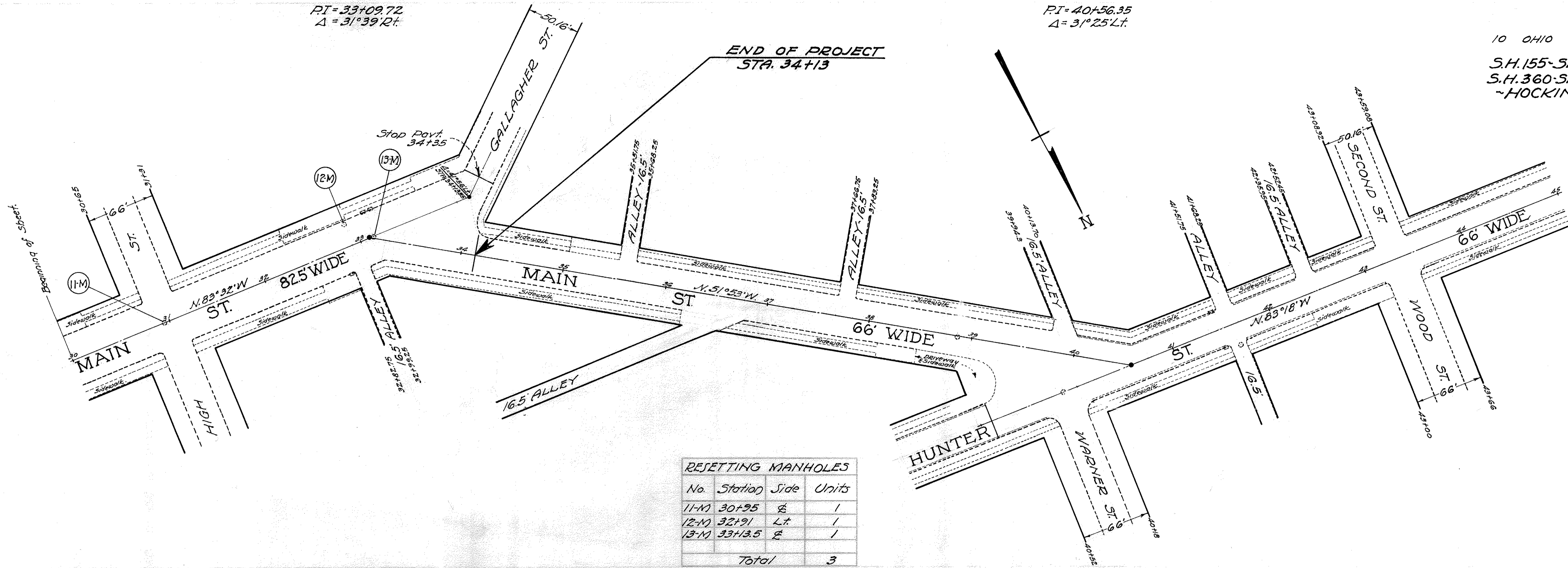


PI = 33+09.72
 $\Delta = 31^{\circ}39'24''$

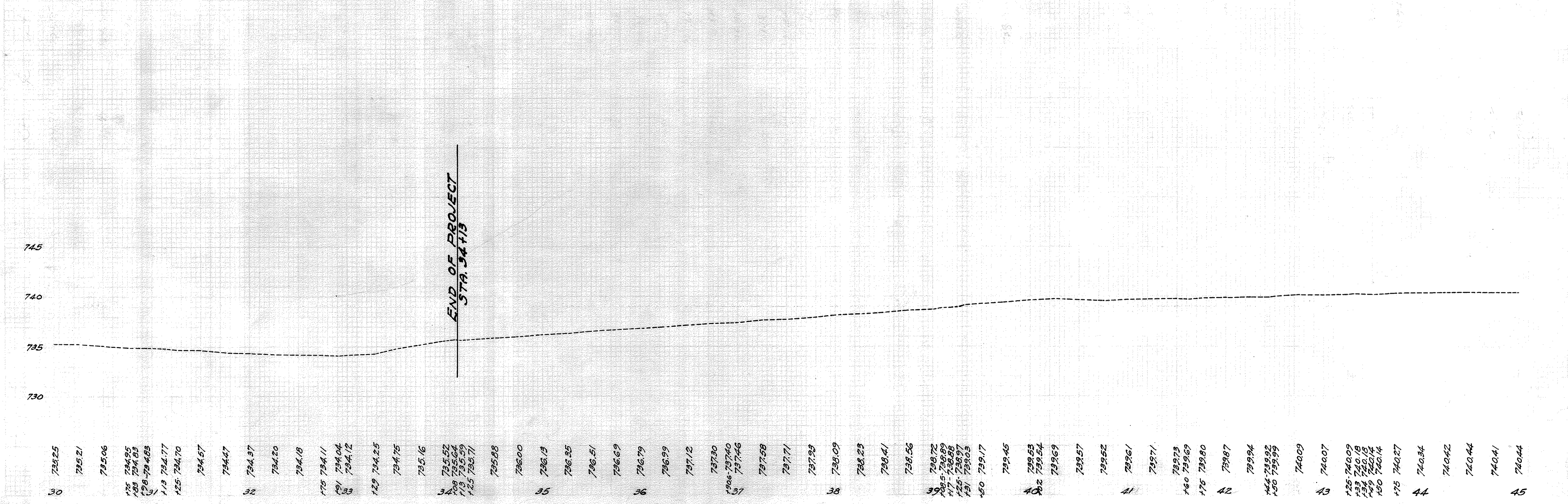
PI = 40+56.35
 $\Delta = 31^{\circ}25'44''$

10 OHIO 1943 5
 7
 S.H. 155-SEC. "LOGAN (PH)"
 S.H. 360-SEC. "LOGAN (PH)"
 -HOCKING COUNTY-



RESETTING MANHOLES

No.	Station	Side	Units
11-M	30+95	E	1
12-M	32+91	Lt	1
13-M	33+13.5	E	1
Total			3



730 735 740 745

30 735.25 735.21 735.06 734.95 734.85 734.78 734.77 734.70 734.57 734.47 734.37 734.20 734.18 734.11 734.04 734.12 734.25 734.75 734.16 734.52 734.64 734.59 734.71 734.88 736.00 736.13 736.35 736.51 736.69 736.79 736.99 737.12 737.30 737.40 737.46 737.58 737.71 737.93 738.09 738.23 738.41 738.56 738.72 738.86 738.99 739.07 739.05 739.17 739.45 739.53 739.54 739.69 739.87 739.94 739.92 739.99 740.09 740.07 740.09 740.18 740.14 740.14 740.27 740.34 740.42 740.44 740.41 740.44

31 32 33 34 35 36 37 38 39 40 41 42 43 44 45