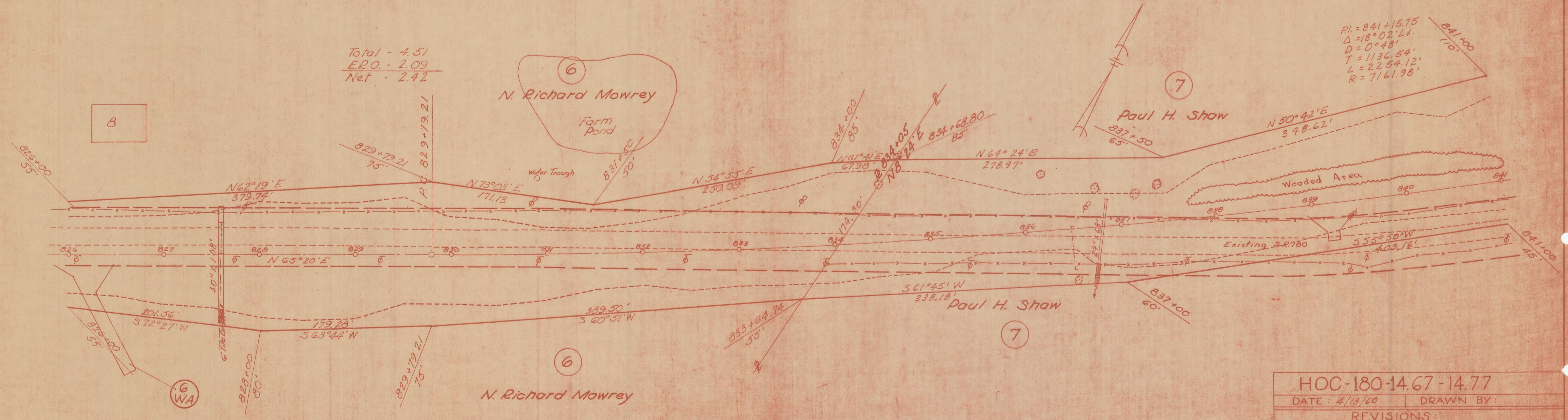


GOODHOPE TOWNSHIP SECTION 36 T13N, R18W



GOODHOPE TOWNSHIP SECTION 36 T13N, R18W

HOC-180-14.67-14.77

| | |
|---------------|-----------|
| DATE: 4/18/60 | DRAWN BY: |
| REVISIONS: | |
| | 3 |
| | 4 |