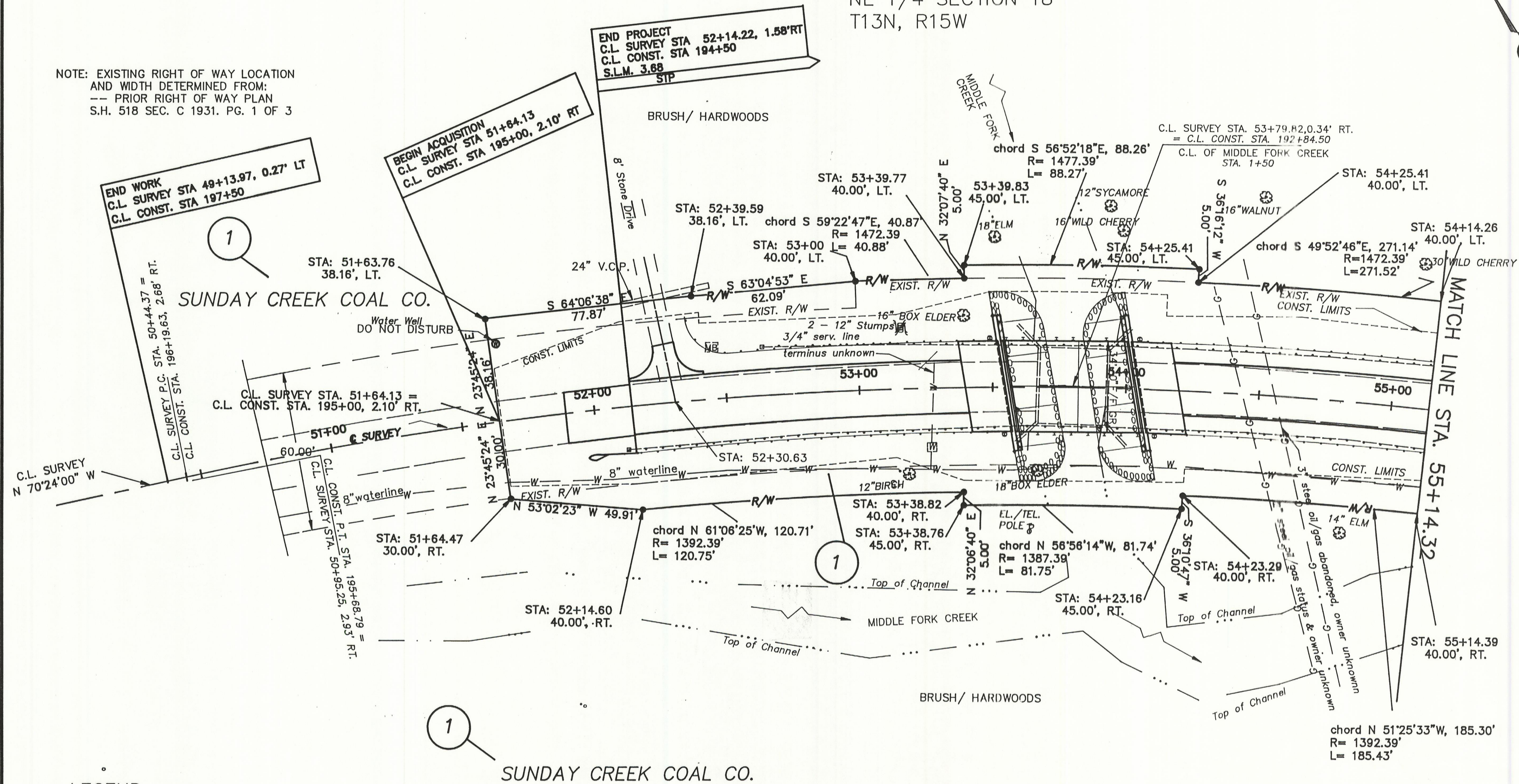


HOCKING COUNTY
WARD TOWNSHIP
NE 1/4 SECTION 18
T13N, R15W

NOTE: EXISTING RIGHT OF WAY LOCATION
AND WIDTH DETERMINED FROM:
--- PRIOR RIGHT OF WAY PLAN
S.H. 518 SEC. C 1931. PG. 1 OF 3



LEGEND

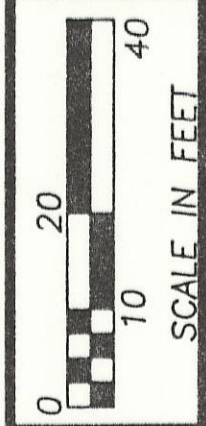
● = 5/8"x30" IRON PIN SET w/cap
STAMPED "ODOT CANTER P.S. 7226"

T.B.A. 0.965 AC.
P.R.O. 0.815 AC.
NET 0.150 AC.

Centerline of SURVEY
Curve Data
P.I. Sta. = 54+41.16
P.C. Sta. = 50+44.37
P.T. Sta. = 58+18.54
Δ = 30°58'
Dc = 4'00"
R = 1432.39'
T = 396.79'
L = 774.17'

Centerline of Construction
Curve Data
P.I. Sta. = 192+20.69
P.C. Sta. = 188+56.27
P.T. Sta. = 195+68.79
Δ = 29°37'33"
Dc = 4'09'28"
R = 1378.00'
T = 364.42'
L = 712.52'
E = 47.37'

REV.	DATE	DESCRIPTION
DATE OF COMPLETION 3-1-95		



FEDERAL PROJECT NO.
STP

STATE PROJECT NO.
109450

P.I.D. NO.
11538

RIGHT OF WAY PLAN
STA. 50+44.37 TO STA. 55+14.32

HOC-216-03.61

3/4
33
34