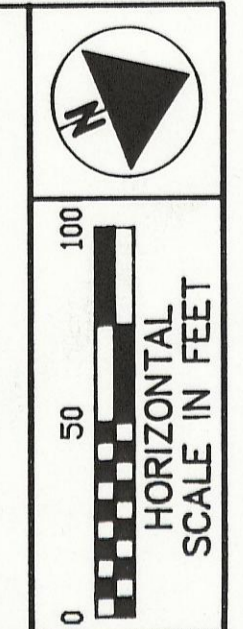


# CENTERLINE SURVEY PLAT

HOC-278-7.34

HOCKING COUNTY OHIO  
WARD TOWNSHIP  
SECTION 26, T-13N, R-15W  
FRACTIONAL LOTS 5,6,8,9

CENTERLINE REFERENCE MONUMENTS ARE SHOWN ON STANDARD CONSTRUCTION DRAWING MC-1 (REV 6-13-69) OF THE OHIO DEPARTMENT OF TRANSPORTATION. THE PLACING OF THE MONUMENTS SHALL BE UNDER THE DIRECTION OF A REGISTERED SURVEYOR AND ARE TO BE SET, AS SHOWN, BY THE HIGHWAY CONTRACTOR AT THE TIME OF CONSTRUCTION, AND ALTERATIONS, WITH PRIOR APPROVAL OF THE DEPARTMENT OF TRANSPORTATION, SHALL BE NOTED AND O.D.O.T. SHALL BE NOTIFIED OF THE NEW LOCATIONS. THE MONUMENTS WILL HAVE AN ACCURACY OF PLUS OR MINUS 0.02 FEET. THE MONUMENTS WILL BE SET UNDER THE DIRECTION OF THE DISTRICT 10 SURVEY OPERATIONS MANAGER

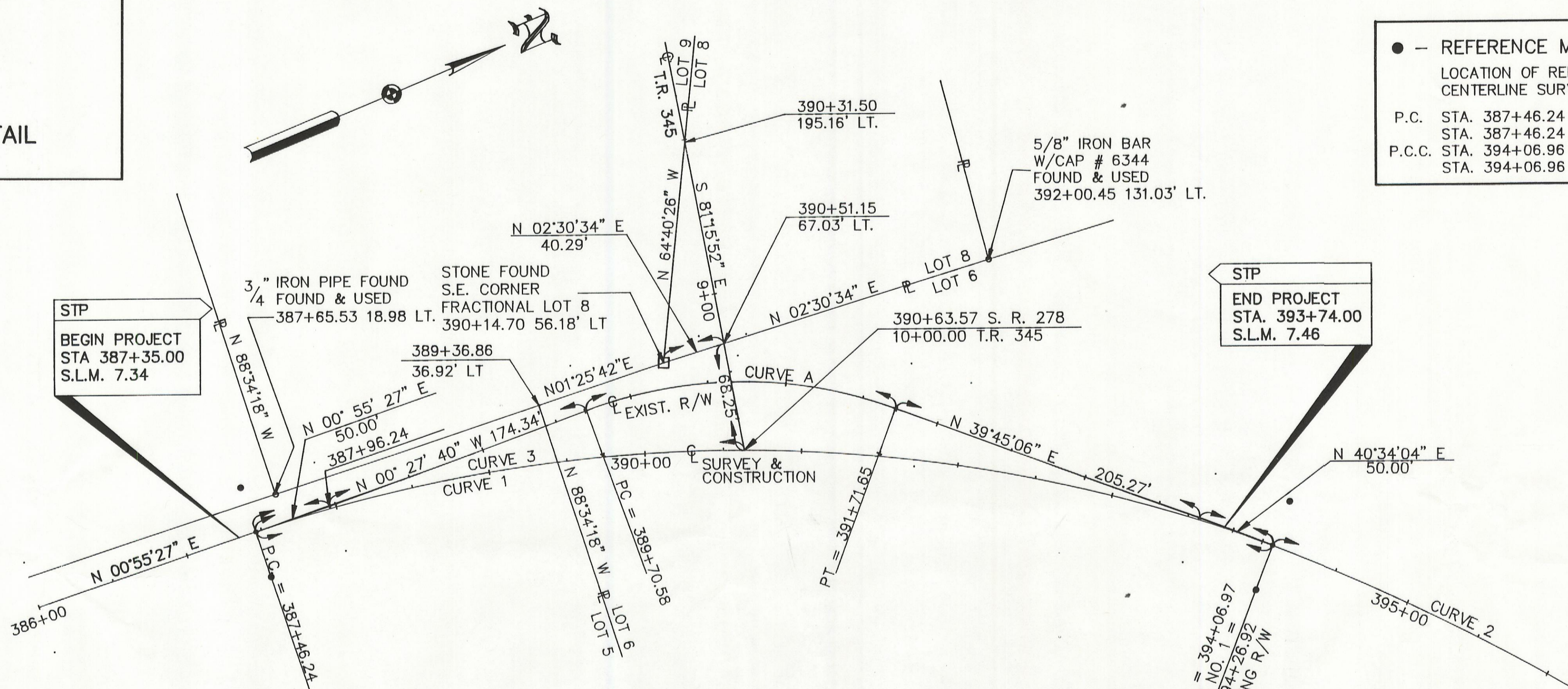
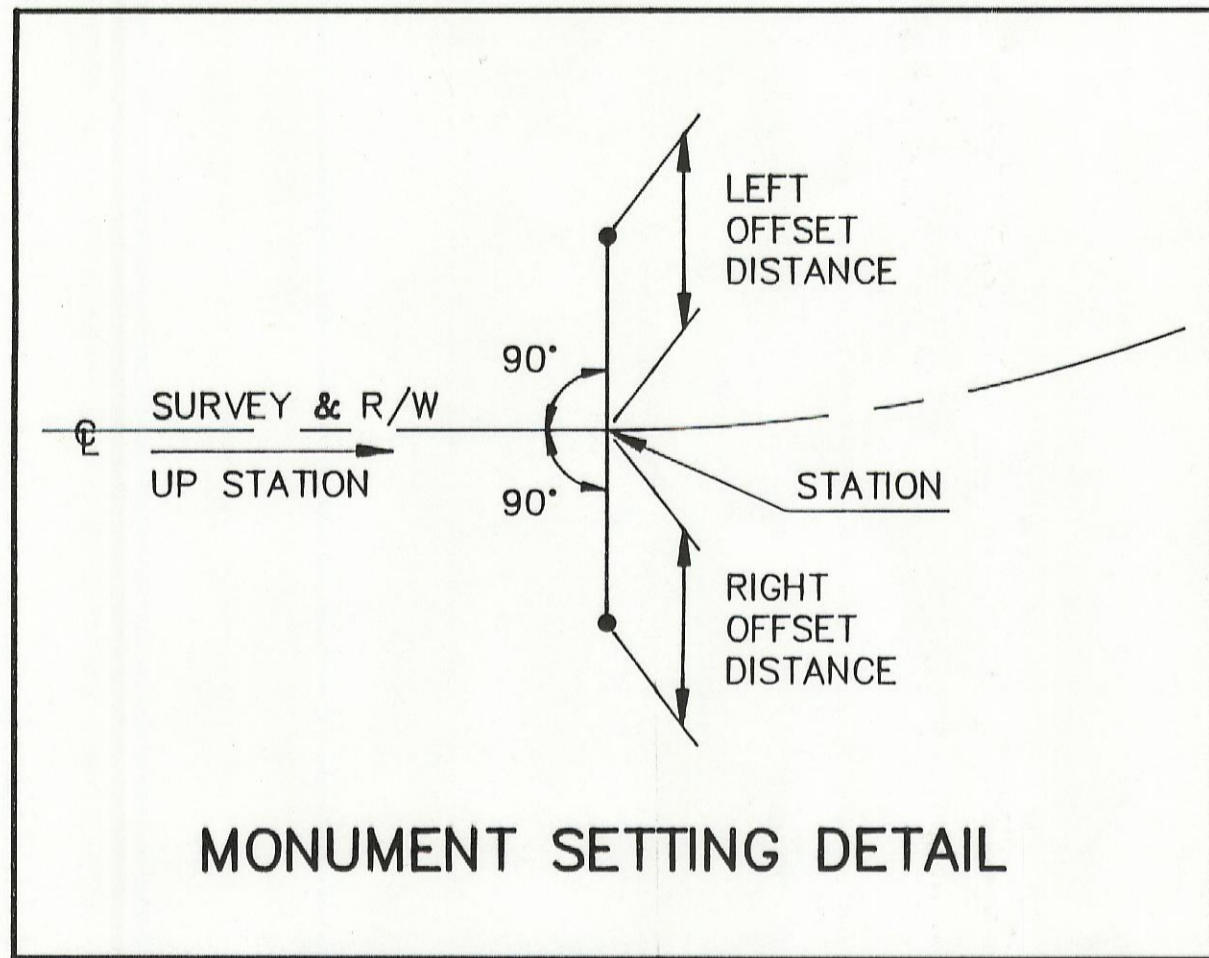


FEDERAL PROJECT NO. STP  
STATE PROJECT NO. 109300

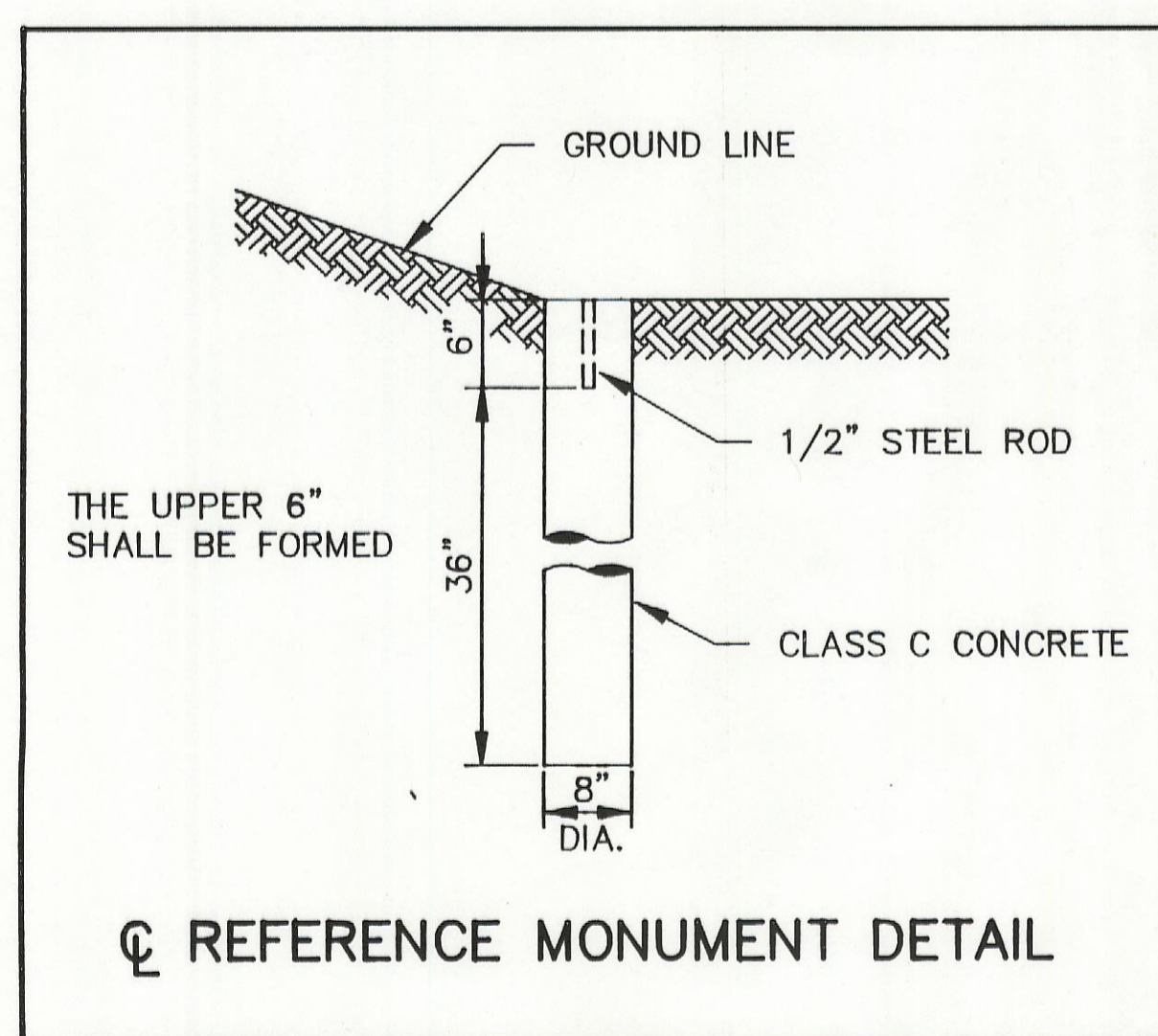
CENTERLINE SURVEY PLAT

HOC-278-7.34

1/4  
37/40



● - REFERENCE MONUMENT (PROPOSED)  
LOCATION OF REFERENCE MONUMENTS  
CENTERLINE SURVEY STATION.  
P.C. STA. 387+46.24 30' RT.  
STA. 387+46.24 30' LT.  
P.C.C. STA. 394+06.96 30' RT.  
STA. 394+06.96 30' LT.



☉ OF EXISTING  
RIGHT OF WAY  
CURVE "A" DATA  
P.I. STA = 390+75.45  
Δ = 40°12'46"  
R = 286.48  
Dc = 20°00'00"  
C = 196.96  
L = 201.06  
T = 104.87  
E = 18.59  
CH. BRG. = N 19°38'43" E

MAINLINE  
CURVE NO. 1 DATA  
P.I. STA = 390+90.44  
Δ = 39°38'36"  
R = 954.93  
Dc = 6°00'00"  
C = 647.62  
L = 660.72  
T = 344.20  
E = 60.14  
CH. BRG. = N 20°44'45" E

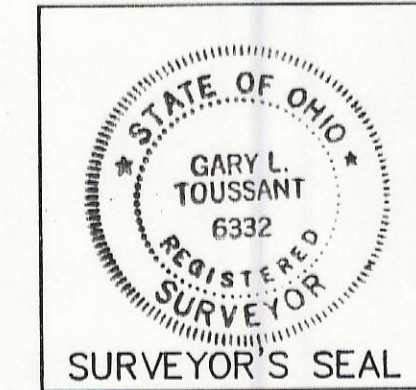
MAINLINE  
CURVE NO. 2 DATA  
P.I. STA = 395+23.58  
Δ = 09°53'14"  
R = 1348.14  
Dc = 04°15'00"  
C = 232.35  
L = 232.64  
T = 116.61  
E = 5.03  
CH. BRG. = N 45°30'40" E

MAINLINE  
CURVE NO. 3 DATA  
P.I. STA = 389+06.38  
Δ = 19°02'23"  
R = 954.93  
Dc = 6°00'00"  
C = 315.87  
L = 317.33  
T = 160.14  
E = 13.33  
CH. BRG. = N 10°26'39" E

THE BASIS OF BEARING IS FROM AN ASSUMED COORDINATE SYSTEM PROVIDED BY O.D.O.T.

*Basis of Bearings should read: East Line of Frac. Lot 8, W/2 Sec. 26 as N20°34'E*

I HEREBY CERTIFY THAT THIS IS A TRUE DELINEATION OF A SURVEY MADE FOR THE OHIO DEPARTMENT OF TRANSPORTATION IN 1993, BY HAMMONTREE & ASSOCIATES, LIMITED.



*Gary L. Toussant* DATE 8-31-94  
GARY L. TOUSSANT P.S. NO. 6332

APPROVED \_\_\_\_\_ 19\_\_\_\_  
DISTRICT DEPUTY DIRECTOR

RECEIVED \_\_\_\_\_ 19\_\_\_\_  
RECORDED \_\_\_\_\_ 19\_\_\_\_  
BOOK \_\_\_\_\_ PAGE \_\_\_\_\_  
COUNTY RECORDER

**PRELIMINARY**