

CSX TRANSPORTATION, INC. HOCKING COUNTY, STARR TOWNSHIP SECTION 21, LOTS 3 & 7, T. 12N., R. 16W.

CALC. By: C.S.G. DATE: 5-9-88	HOC-328-4.07		OHIO
			FHWA 5 REGION
CHK'D: By: E.B. DATE: 6-8-88	FEDERAL PROJECT	STATE PROJECT	10 6 3 7 0

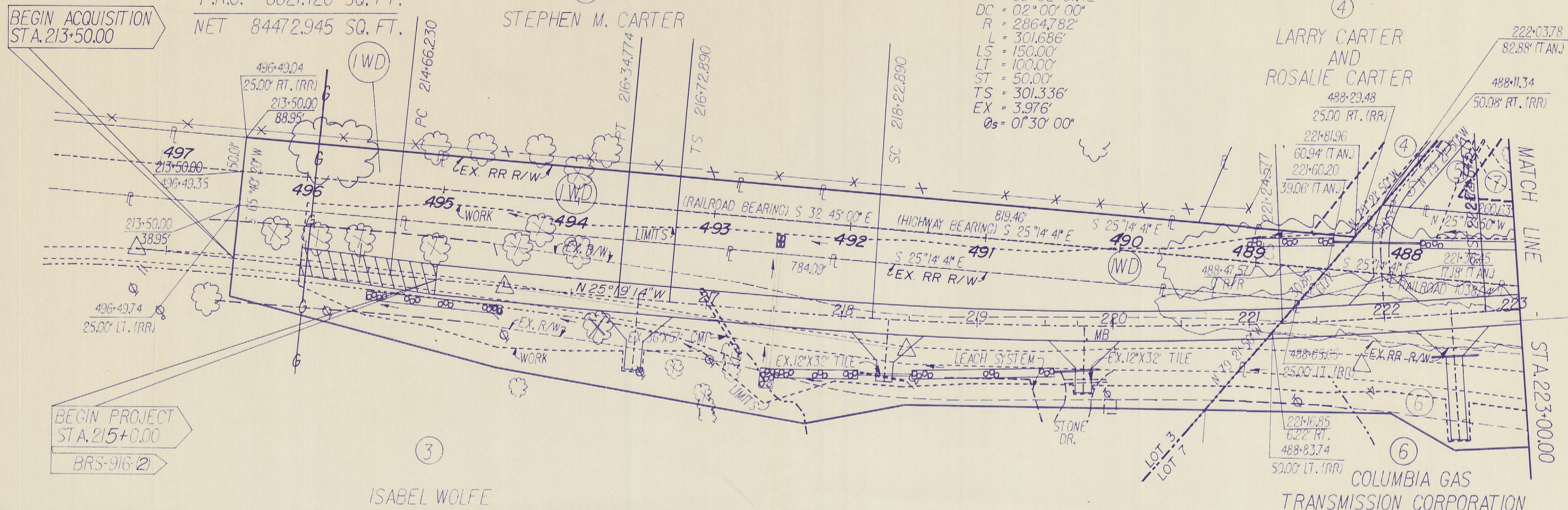
34
34
6
6

HIGHWAY
CURVE DATA
PI = STA. 215+50.503
Δ = 00° 50' 33.79"
DC = 00° 30' 00"
R = 11459.156'
L = 168.554'
T = 84.273'
EX = .310'

TOTAL 91094.065 SQ. FT.
P.R.O. 6621.120 SQ. FT.
NET 84472.945 SQ. FT.

HIGHWAY
CURVE DATA

PI = STA. 219+74.226
Δ = 09° 02' 01.42"
DC = 02° 00' 00"
R = 2864.782'
L = 301.686'
LS = 150.00'
LT = 100.00'
ST = 50.00'
TS = 301.336'
EX = 3.976'
Os = 01° 30' 00"



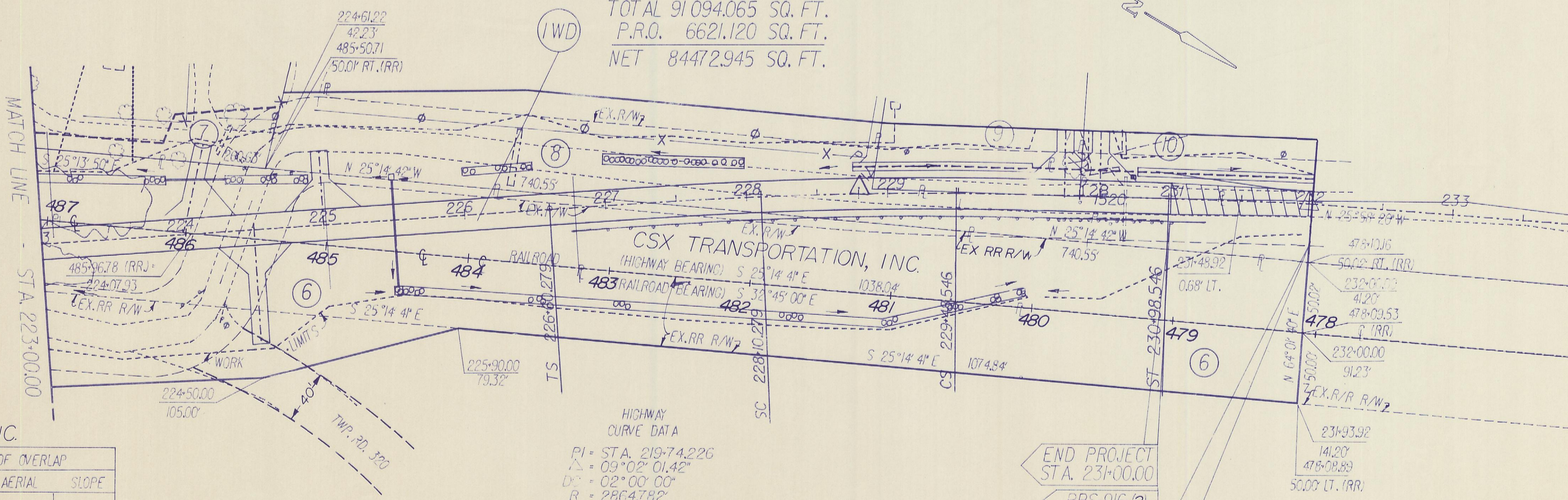
BEGIN PROJECT
STA. 215+0.00
BRS-916-2

BEGIN ACQUISITION
STA. 213+50.00

TOTAL 91094.065 SQ. FT.
P.R.O. 6621.120 SQ. FT.
NET 84472.945 SQ. FT.

HIGHWAY
PI = STA 231+97606
Δ = 02° 20' 0070"

NOTE: THE STATIONS AND OFFSETS FALLING WITHIN THE LIMITS OF THE CENTERLINE SPIRALS ARE CALCULATED FROM THE TANGENT TO THE TOTAL CURVE AND ARE NOTED (TAN).



END PROJECT
STA. 231+00.00
BRS-916-2
SL M 4/37
END ACQUISITION
STA. 232+00.00

VALUATION SURVEY MAP V-11-HV
8

CSX TRANSPORTATION, INC.

PARCEL NUMBER	EASEMENT REQUIRED	TOTAL AREA	AREA OF OVERLAP		
			HIGHWAY	AERIAL	SLOPE
IWD	WARRANTY DEED	91094.065	6621.120		
		SQ.FT.	SQ.FT.		

HIGHWAY
CURVE DATA
PI = STA. 219+74.226
Δ = 09° 02' 01.42"
DC = 02° 00' 00"
R = 2864.782'
L = 301.686'
LS = 150.00'
LT = 100.00'
ST = 50.00'
TS = 301.336'
EX = 3.976'
Os = 01° 30' 00"

REV.	DATE	DESCRIPTION
FB	7-11-88	Deleted Culvert Sta 230+00

RAILROAD PLAT