

# SCHEMATIC PLAN

Calculated by: H. O. Date: 7-88	Checked by: R. H. R. Date: 7-88	FED. RD. DIVISION 5	STATE OHIO	PROJECT	2 33
---------------------------------------	---------------------------------------	---------------------------	---------------	---------	---------

HOC-328-4.07

**CURVE DATA ①**

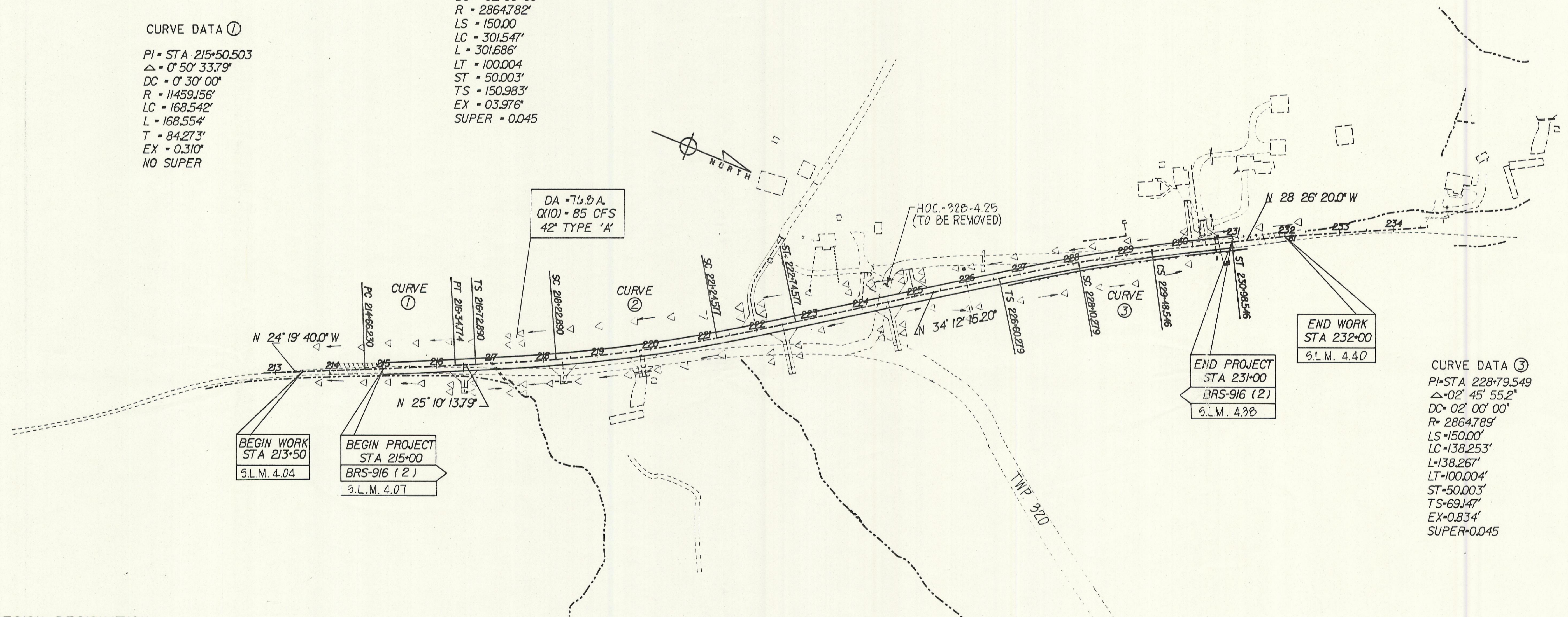
PI - STA 215+50.503  
 $\Delta$  - 0° 50' 33.79"  
 DC - 0° 30' 00"  
 R - 114591.56'  
 LC - 168.542'  
 L - 168.554'  
 T - 84.273'  
 EX - 0.310'  
 NO SUPER

**CURVE DATA ②**

PI - STA 219+74.226  
 $\Delta$  - 06° 02' 1.42"  
 DC - 02° 00' 00"  
 R - 2864.782'  
 LS - 150.00  
 LC - 301.547'  
 L - 301.686'  
 LT - 100.004  
 ST - 50.003'  
 TS - 150.983'  
 EX - 03.976'  
 SUPER - 0.045

**CURVE DATA ③**

PI - STA 228+79.549  
 $\Delta$  - 02° 45' 55.2"  
 DC - 02° 00' 00"  
 R - 2864.789'  
 LS - 150.00  
 LC - 138.253'  
 L - 138.267'  
 LT - 100.004  
 ST - 50.003'  
 TS - 69.147'  
 EX - 0.834'  
 SUPER - 0.045



**DESIGN DESIGNATION**

CURRENT ADT(1988) - 742 VEH  
 DESIGN ADT(2008) - 890 VEH  
 DHV - 134  
 D - 50%  
 T - 4%  
 DESIGN SPEED - 55 MPH  
 LEGAL SPEED - 55 MPH  
 FUNCTIONAL CLASSIFICATION: COLLECTOR (RURAL)  
 DESIGN EXCEPTION GRADED SHOULDER  
 APPROVAL DATE AUG-6-87

TEMPORARY SOIL EROSION AND SEDIMENT CONTROL  
 SEEDING AREA - 13880 SQ.YD.

THE FOLLOWING ESTIMATED QUANTITIES ARE TO BE USED AS DIRECTED BY THEN ENGINEER, FOR TEMPORARY EROSION AND SEDIMENT CONTROL MEASURES:

- |  |                                |
|--|--------------------------------|
| 207 FILTER FABRIC FENCE                                | 1500 LIN.FT.                   |
| 207 TEMPORARY SEEDING AND MULCHING                     | 20% X 14988 = 2998 SQ.YD.      |
| △ 207 STRAW OR HAY BALES                               | 110 EACH                       |
| 207 TEMPORARY SLOPE DRAINS                             | 9 STA X 10 = 90 LIN.FT.        |
| 207 TEMPORARY BENCHES, DIKES DAMS, AND SEDIMENT BASINS | 5 X 90 = 450 CU.YD.            |
| 659 REPAIR SEEDING AND MULCHING                        | 5% X 13880 = 694 SQ.YD.        |
| 659 WATER  | 2776 X 9 X 240/1000 = 6 M.GAL. |

