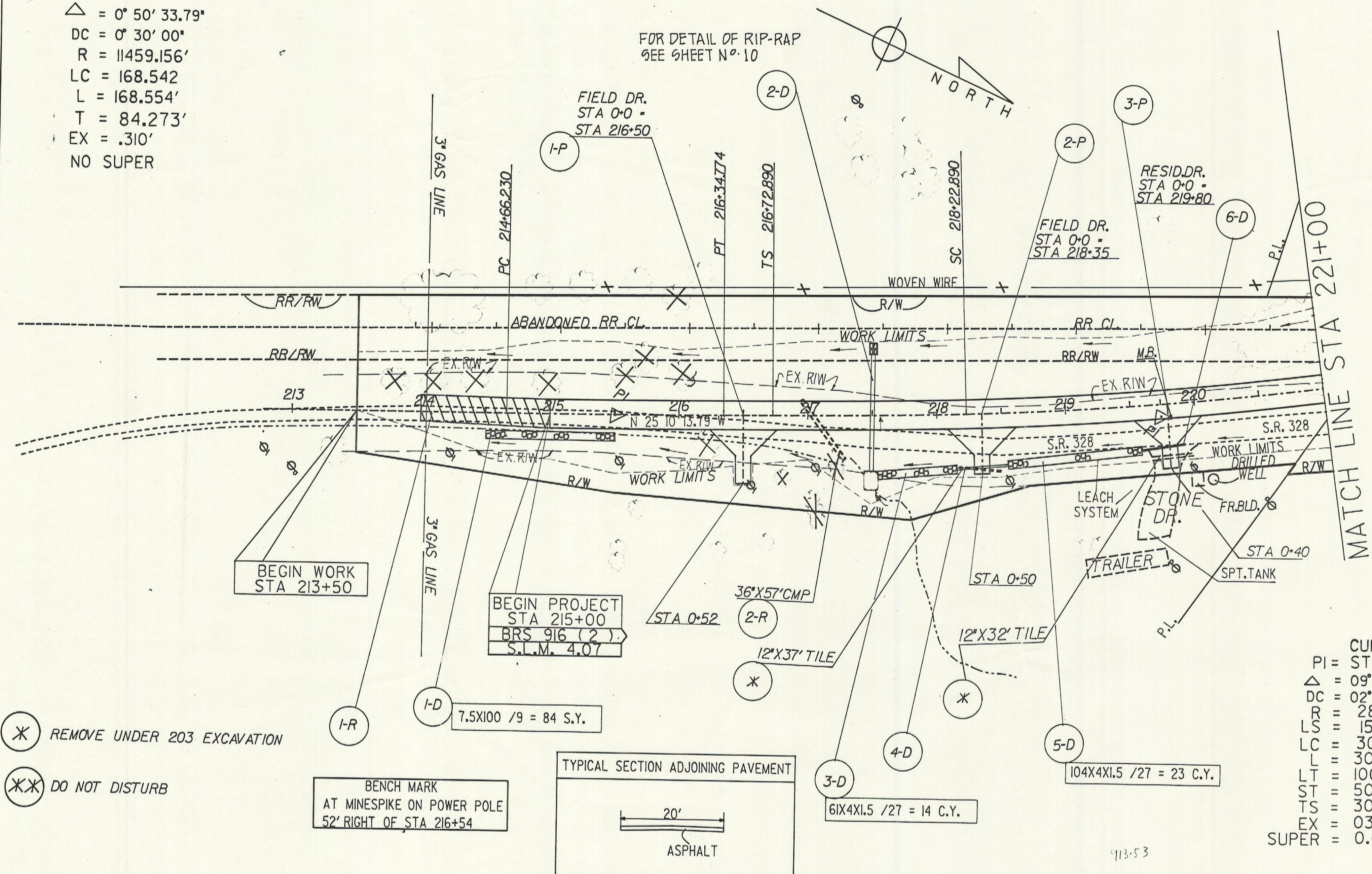


CURVE DATA

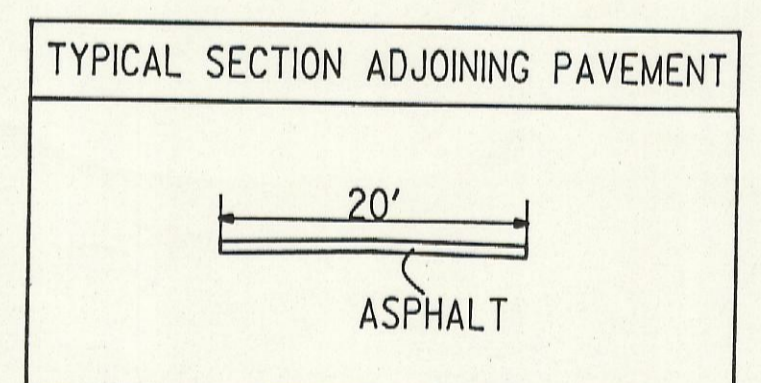
PI STA 215+50.5003
 $\Delta = 0^\circ 50' 33.79''$
 $DC = 0^\circ 30' 00''$
 $R = 11459.156'$
 $LC = 168.542$
 $L = 168.554'$
 $T = 84.273'$
 $EX = .310'$
 NO SUPER

FOR DETAIL OF RIP-RAP
 SEE SHEET NO. 10

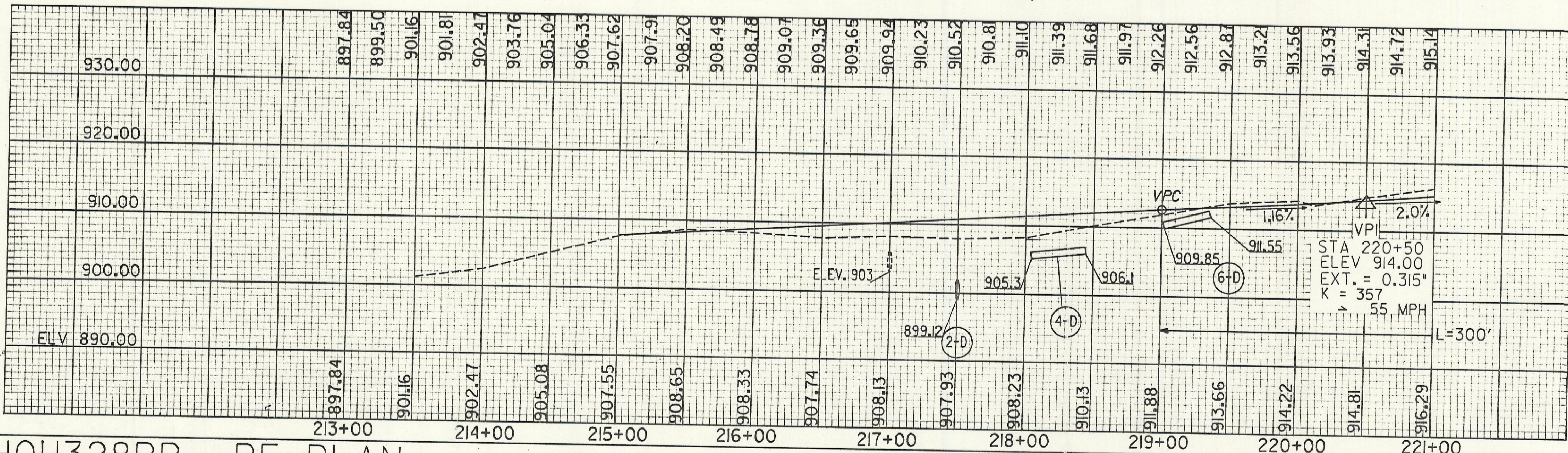


- (X) REMOVE UNDER 203 EXCAVATION
- (XX) DO NOT DISTURB

BENCH MARK
 AT MINESPIKE ON POWER POLE
 52' RIGHT OF STA 216+54



CURVE DATA
 PI = STA 219+74.226
 $\Delta = 09^\circ 02' 1.42''$
 $DC = 02^\circ 00' 00''$
 $LS = 2864.782$
 $LC = 150.0$
 $LC = 301.547$
 $LC = 301.686$
 $LC = 100.004$
 $ST = 50.003'$
 $TS = 301.336'$
 $EX = 03.976'$
 SUPER = 0.045 FT/FT



Calculated by: H.O. Date: 7-88	Checked by: R.H.R. Date: 7-88	FED. RD. DIVISION: 5	STATE: OHIO	PROJECT: HOC-328-4.07	11 33
-----------------------------------	----------------------------------	----------------------	-------------	-----------------------	----------

REF. NO.	STATION TO STATION	SIDE	WEARING COURSE REMOVED OVER	PIPE CONDUIT TYPE	CONDUIT TYPE	OR	36" TO 60" AGGREGATE	40" ASPHALT CONCRETE	40" CONCRETE	60" RCP	60" BITUMINOUS AGGREGATE	60" RCP TYPE 'B' WITH FILTER	ESTIMATED QUANTITIES	SEE SHEET NO.
I-R	214+00 TO 215+00	C.L.	222	24"	LFT.									
2-R	217+00	C.L.	57											
I-D	214+50 TO 215+50	RT.												
2-D	217+50 TO 218+11	RT.												
3-D	217+50 TO 218+11	RT.												
4-D	218+35	RT.												
5-D	218+50 TO 219+54	RT.												
6-D	219+80	RT.												
I-P	216+50	RT.												
2-P	218+35	RT.												
3-P	219+80	RT.												
TOTALS														