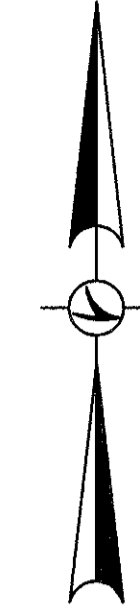
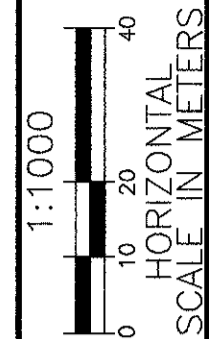
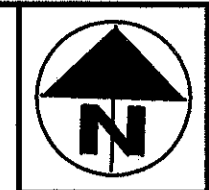
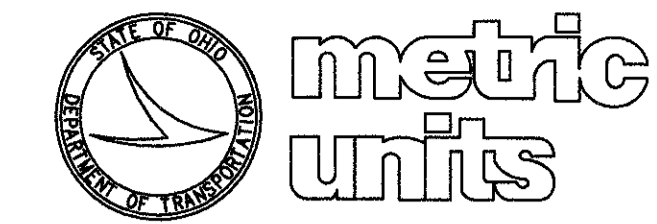
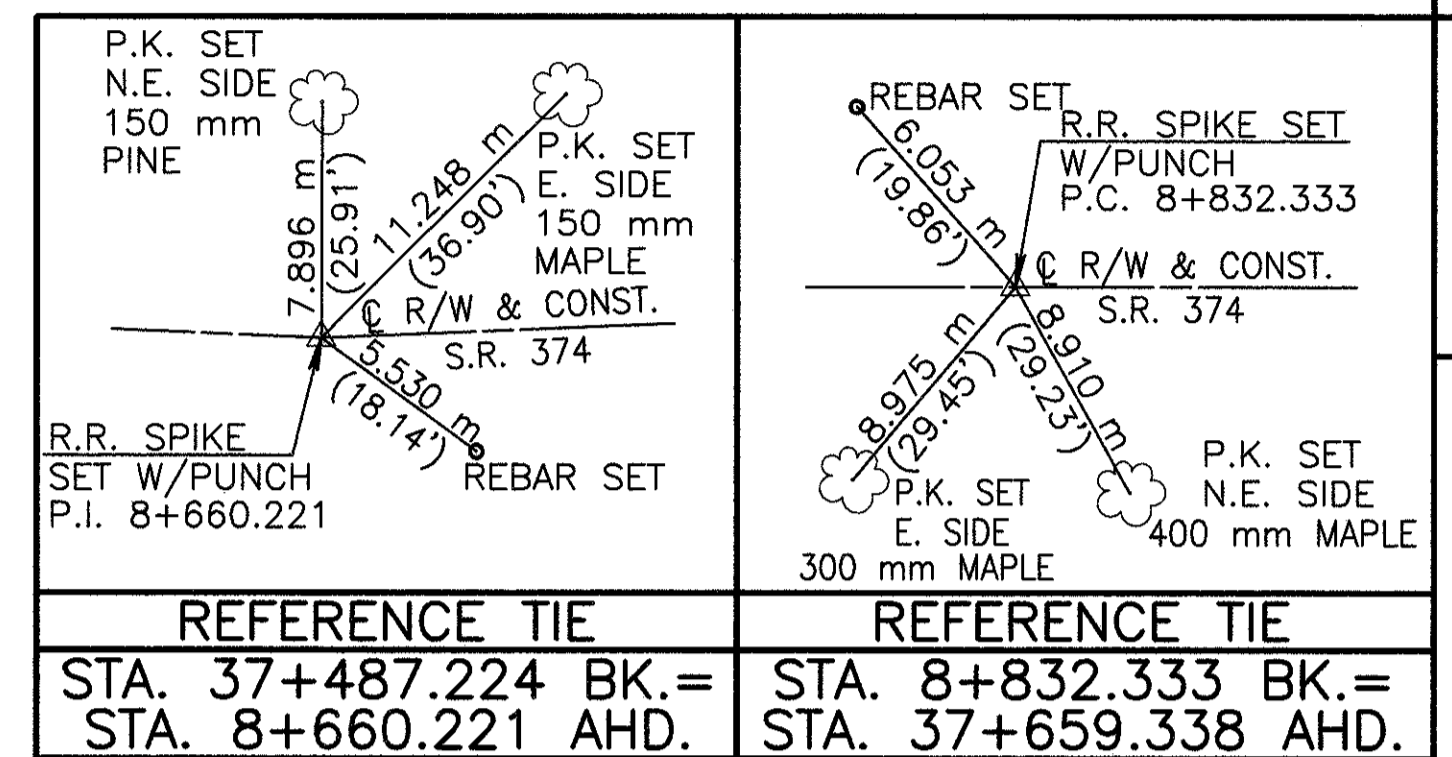


# HOC-374-37.579(23.35)

SECTION 27, T.13N., R.18W.  
GOOD HOPE TOWNSHIP  
HOCKING COUNTY



**RECORD CURVE DATA**  
P.I. STA. 37+719.472  
 $\Delta = 38^{\circ}00'00''$  RT.  
R = 174.638 m (572.95')  
T = 60.134 m (197.29')  
L = 115.824 m (380.00')  
E = 10.061 m (33.01')

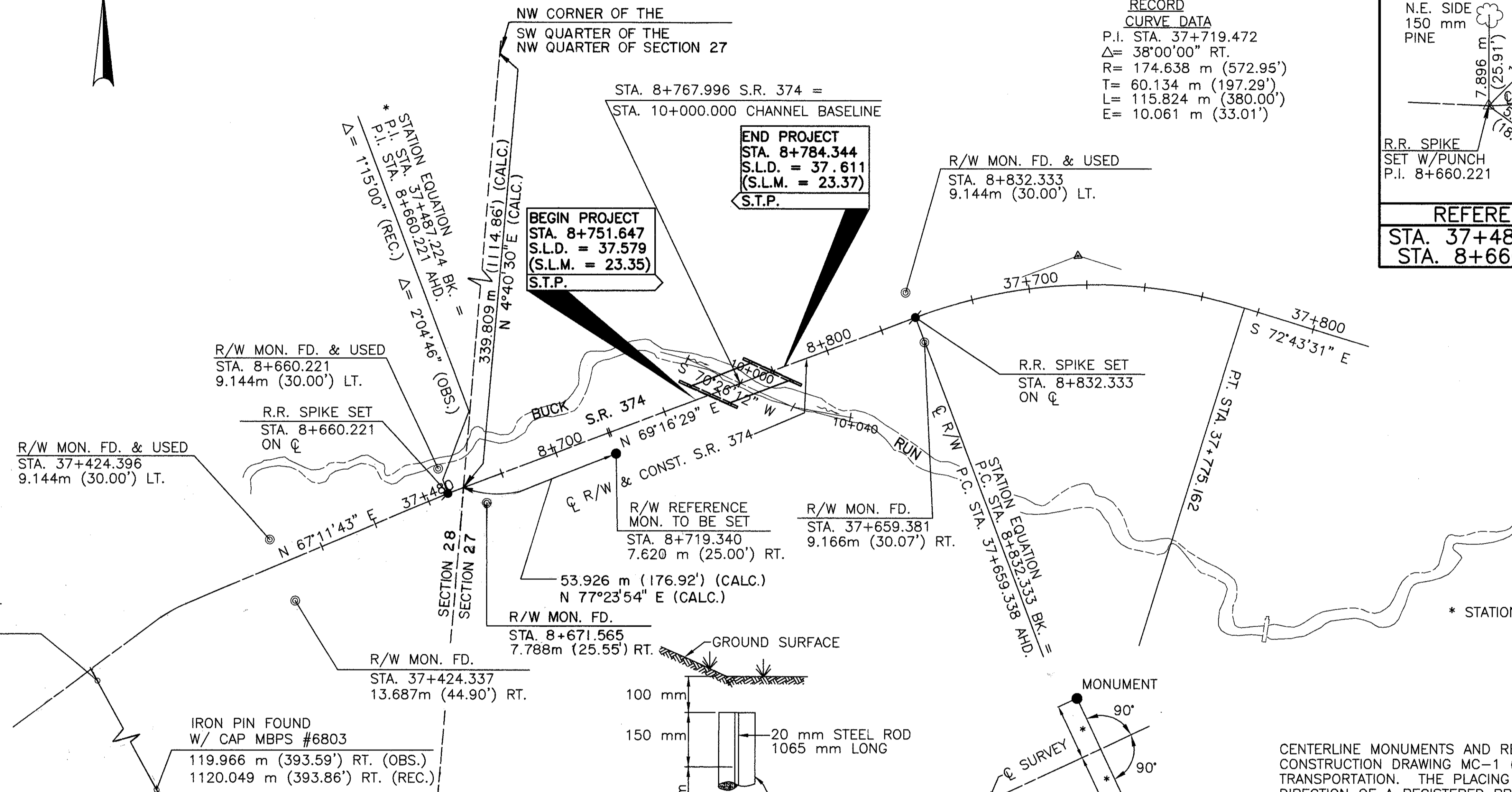


P.I.D. NO. 12850

CENTERLINE PLAT

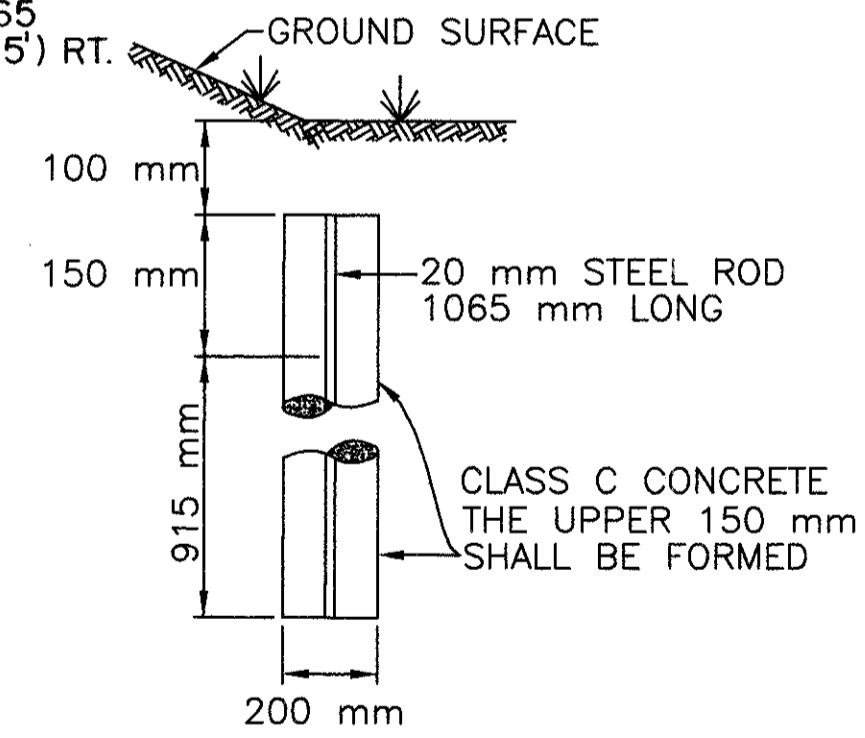
HOC-374-37.579(23.35)

1/4  
29  
32



\* STATIONING WAS ESTABLISHED FROM THE FOLLOWING:  
P.I. STA. 8+660.221 = STA. 284+12.80 (ENGLISH) (REC.)

CENTERLINE MONUMENTS AND REFERENCE MONUMENTS ARE SHOWN ON STANDARD CONSTRUCTION DRAWING MC-1 (REV. 6-13-69) OF THE OHIO DEPARTMENT OF TRANSPORTATION. THE PLACING OF THE MONUMENTS SHALL BE UNDER THE DIRECTION OF A REGISTERED PROFESSIONAL SURVEYOR AND ARE TO BE SET, AS SHOWN, BY THE HIGHWAY CONTRACTOR AT THE TIME OF CONSTRUCTION. ANY ALTERATIONS, WITH PRIOR APPROVAL OF THE DEPARTMENT OF TRANSPORTATION, SHALL BE NOTED AND O.D.O.T. SHALL BE NOTIFIED OF THE NEW LOCATION.

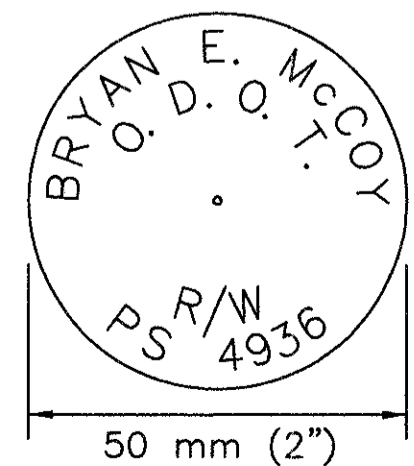


\*FOR OFFSET DISTANCE SEE TABLE

EXISTING RIGHT OF WAY MONUMENTS FOUND					
OBSERVED STATION (METRIC)	RECORD STATION (ENGLISH)	OBSERVED DISTANCE FROM $\phi$ R/W		RECORD DISTANCE FROM $\phi$ R/W	
		RIGHT	LEFT	RIGHT	LEFT
P.T. STA. 37+424.337	P.T. STA. 282+06.67	13.687m (44.90')		13.716m (45.00')	
P.T. STA. 37+424.396	P.T. STA. 282+06.67		9.144m (30.00')		9.144m (30.00')
P.I. STA. 8+660.221	P.I. STA. 284+12.80		9.144m (30.00')		9.144m (30.00')
STA. 8+671.565	STA. 284+50.00	7.788m (25.55')		7.620m (25.00')	
P.C. STA. 8+832.333	P.C. STA. 289+77.45		9.144m (30.00')		9.144m (30.00')
P.C. STA. 37+659.381	P.C. STA. 289+77.45	9.166m (30.07')		7.620m (25.00')	

NOTE: THE EXISTING R/W WIDTH AND LOCATION WERE DETERMINED USING:  
S.R. 374 SEC. 17.94-21.97 (S.H. 842 SEC. D)

- MONUMENT LEGEND**
- EXISTING R/W MONUMENT FOUND
  - EXISTING IRON PIN/P.K. NAIL FOUND
  - ⊙ R.R. SPIKE SET
  - 19mm(3/4") x 0.75m(30") IRON PIN SET WITH I.D. CAP



RECORDER'S STAMP

RECEIVED \_\_\_\_\_, 19\_\_\_\_  
RECORDED \_\_\_\_\_, 19\_\_\_\_  
BOOK \_\_\_\_\_, PAGE\_\_\_\_  
COUNTY RECORDER

I HEREBY CERTIFY THAT THIS PLAT IS A TRUE DELINEATION OF A SURVEY MADE FOR THE OHIO DEPARTMENT OF TRANSPORTATION IN 1997 BY McCOY ASSOCIATES INC.

THE ESTABLISHMENT OF THE PROPERTY LINES AND EXISTING RIGHT OF WAY LINES SHOWN ON THIS PLAN AS OF THIS DATE WAS PERFORMED BY ME OR UNDER MY DIRECT SUPERVISION.

BY Bryan E. McCoy SURVEYOR No. 4936  
DATE 4-29-98

