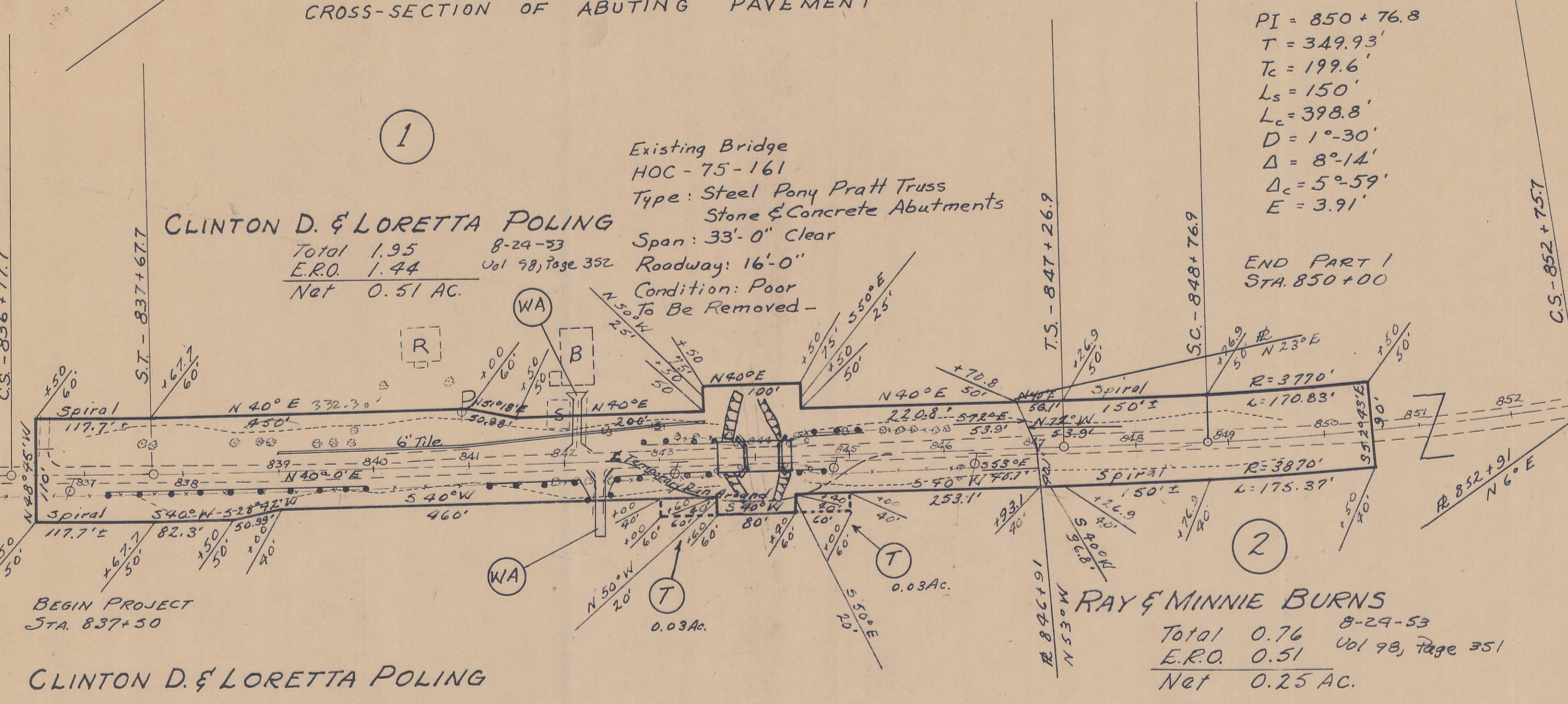
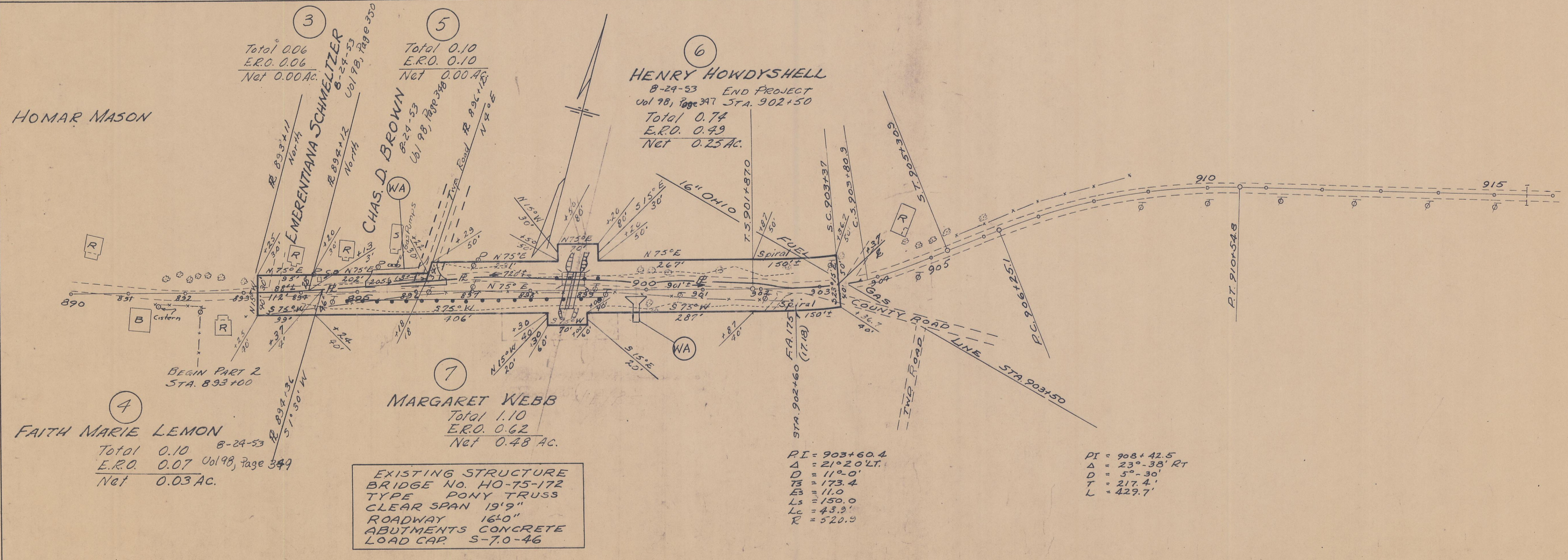


PI = 833 + 41.7
 T = 429.8'
 T_c = 278.8'
 L_s = 150'
 L_c = 555.8'
 Δ = 2° 00'
 Δ_c = 14° 07'
 E = 11° 07'
 E = 13.54'



PI = 850 + 76.8
 T = 349.93'
 T_c = 199.6'
 L_s = 150'
 L_c = 398.8'
 Δ = 1° 30'
 Δ_c = 8° 14'
 E = 5° 59'
 E = 3.91'

FALLS GORE TWP. SEC. 31 T-14-N R-16-W



Total 0.06
 E.R.O. 0.06
 Net 0.00 AC.

Total 0.10
 E.R.O. 0.10
 Net 0.00 AC.

Total 0.10
 E.R.O. 0.07
 Net 0.03 AC.

PI = 903 + 60.4
 Δ = 21° 20' 27"
 D = 112.0'
 T = 173.4'
 E = 11.0'
 L_s = 150.0'
 L_c = 43.3'
 R = 520.5'

PI = 908 + 42.5
 Δ = 23° 38' RT
 D = 5° 30'
 T = 217.4'
 L = 429.7'

FALLS GORE TWP. SEC. 30 T-14-N R-16-W