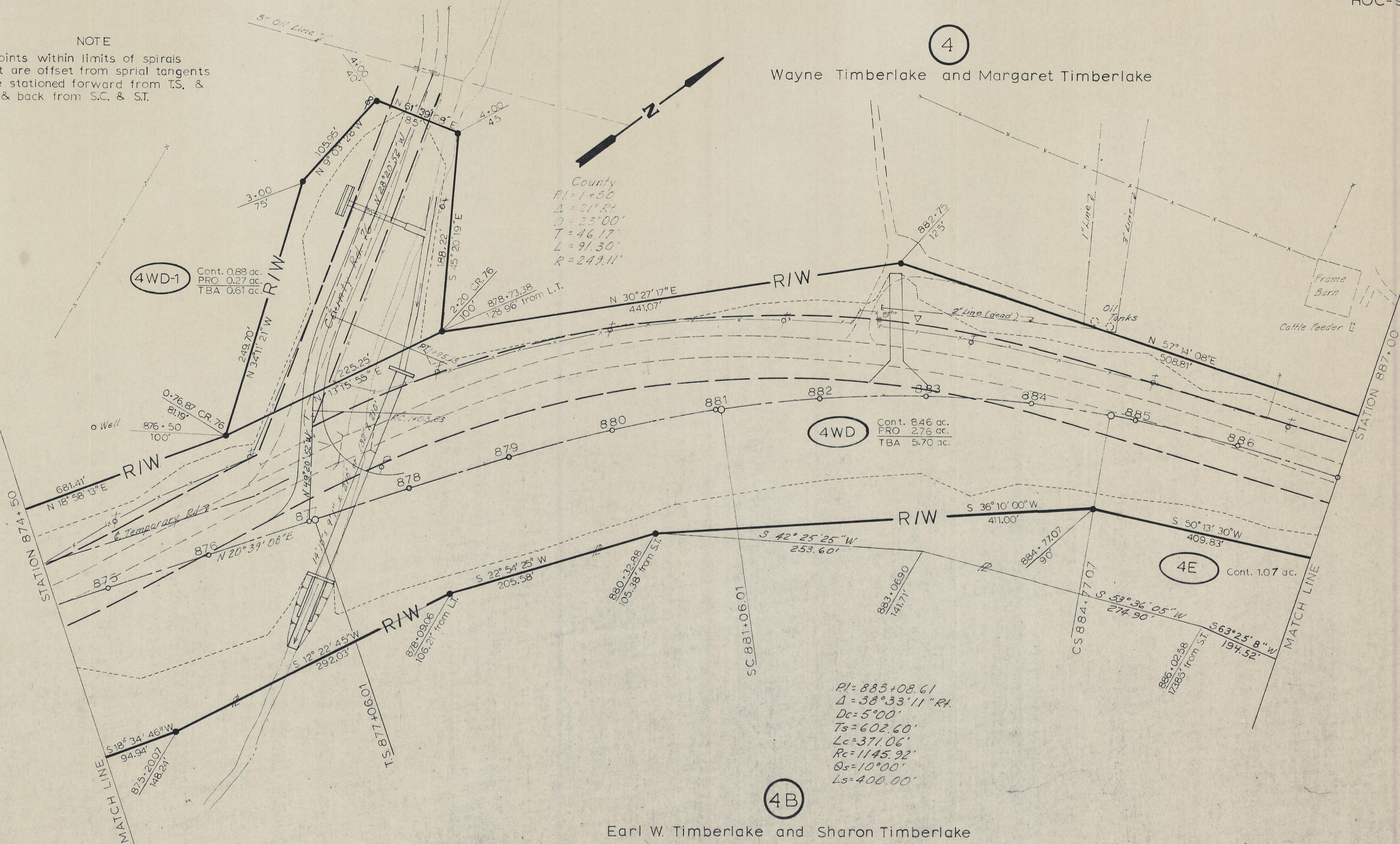


| | | |
|-------------|-------|---------|
| FHWA REGION | STATE | PROJECT |
| 5 | OHIO | |

96
103
8
13

HOC-93-(16.35)(17.63)
R/W ACQUIRED AS
HOC-93-(16.50)(17.64)

NOTE
Points within limits of spirals
that are offset from spiral tangents
are stationed forward from T.S. &
C.S. & back from S.C. & S.T.



FALLS GORE TOWNSHIP, SECTION 30, T 14 N, R 16 W

| | |
|-----------------------|---------------------------------------|
| HOC-93-(16.35)(17.63) | |
| DATE | DRAWN BY G.P.D. |
| REVISIONS G.P.D. | |
| 5-1-75 | Revised Acreage & Bearing - Parcel 4E |
| JOB NO | 108000 |
| TYPE FUND | |

8
13

R/W PLANS STA 874+50 TO STA 887+00