

FED. RD. DIVISION	STATE	PROJECT
2	OHIO	

101
103
11
13

HOC-93-(16.35)(17.63)

R/W ACQUIRED AS
HOC-93-(16.50)(17.64)

Clinton St. Clair

9

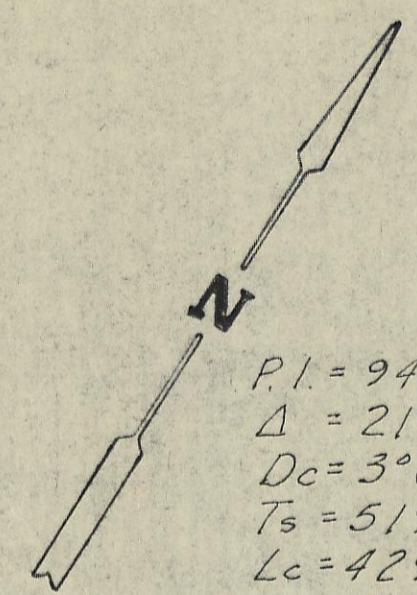
Lauretta Glick

5

5X-2

5WD-1

See detail sheet 13



PI = 4152.37
Δ = 37°
Dc = 23°
T = 83.35'
Lc = 160.87'

P.I. = 947+07.39
Δ = 21°53'12" Lt.
Dc = 3°00'
Ts = 519.63'
Lc = 429.56'
Ls = 300'
Q = 4°30'
Rc = 1909.86'
LT = 200.06'
ST = 100.06'

9WD-1
Cont. 1.92 ac.
PRO 0.21 ac.
TBA 1.71 ac.

9WD
Cont. 6.50 ac.
PRO 2.76 ac.
TBA 3.74 ac.

9X
Cont. 1.13 ac.

8X
Cont. 0.39 ac.

8WD
Cont. 1.12 ac.
PRO 0.15 ac.
TBA 0.97 ac.

Lester L Leffler
&
Mary B Leffler

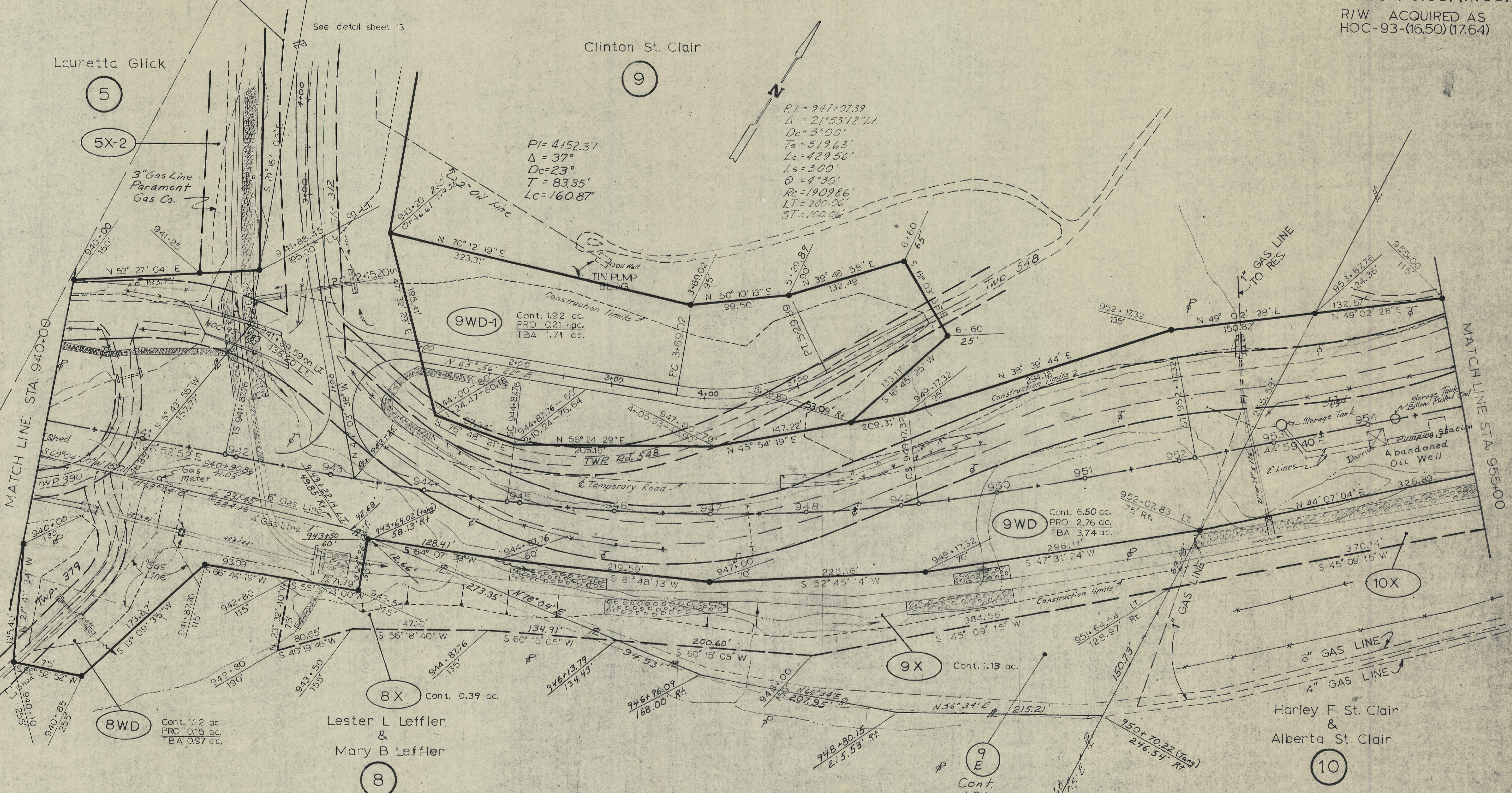
8

Harley F St. Clair
&
Alberta St. Clair

10

MATCH LINE STA. 940+00

MATCH LINE STA. 955+00



HOC-93-(16.35)(17.63)	
DATE	DRAWN BY GFD
REVISIONS	
5-6-75	Revised Parcels 8WD, 8X, 9WD, 9X & added Parcel 9E Twp.

JOB NO. 108000	11
TYPE FUND	13

FALLS GORE TOWNSHIP, SECTION 29, T14N, R16W

BRUNING 44-560 10943