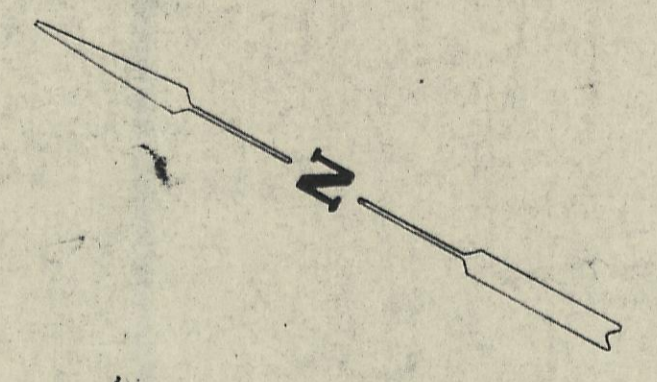


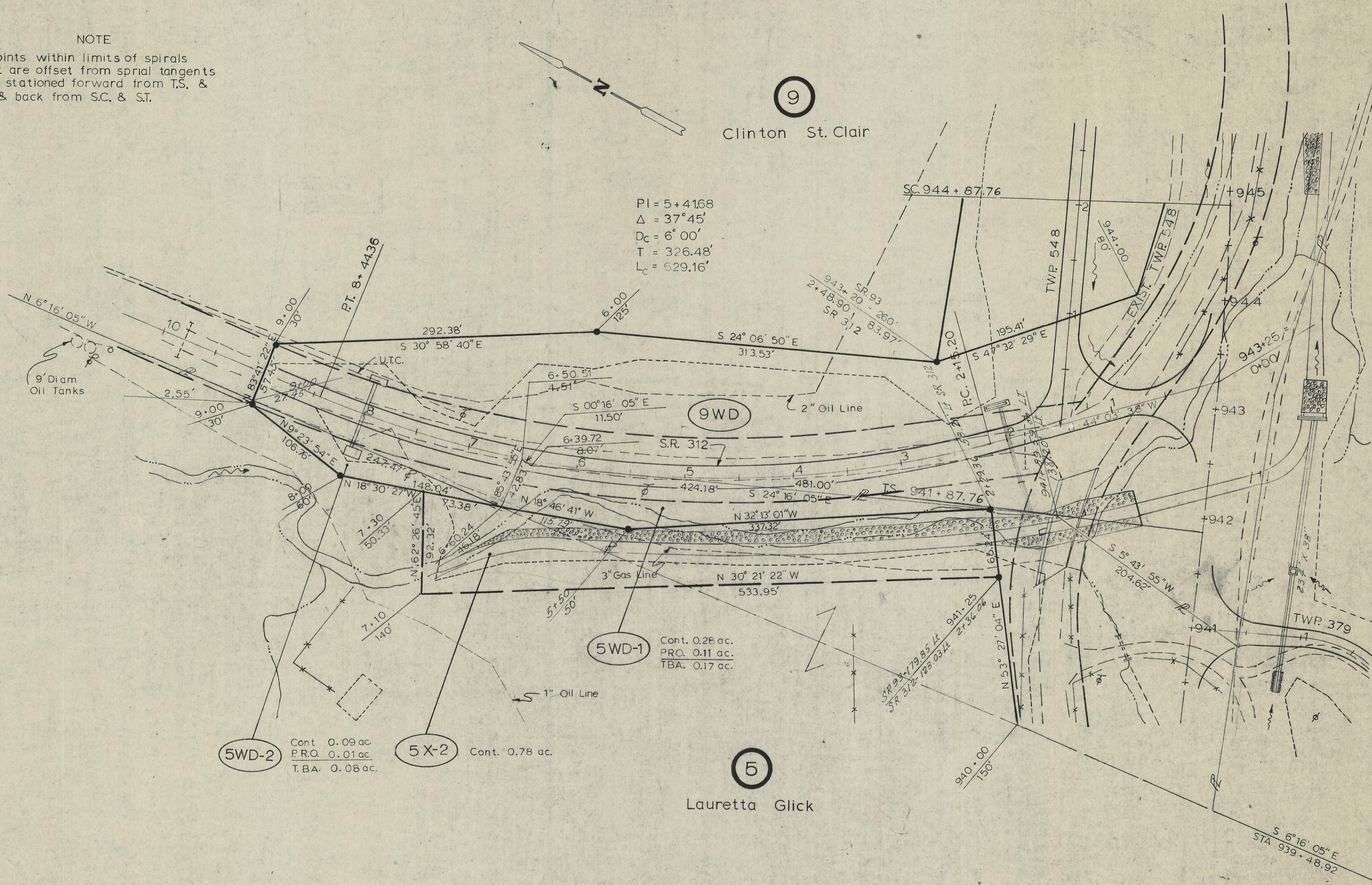
NOTE
 Points within limits of spirals
 that are offset from spiral tangents
 are stationed forward from T.S. &
 C.S. & back from S.C. & S.T.



9

Clinton St. Clair

PI = 5+4168
 $\Delta = 37^\circ 45'$
 $D_c = 6^\circ 00'$
 $T = 326.48'$
 $L_c = 629.16'$



5

Lauretta Glick

HOC-93-(16.35)(17.63)	
DATE	DRAWN BY B.P.D.
REVISIONS	
JOB NO.	108000
TYPE FUND	