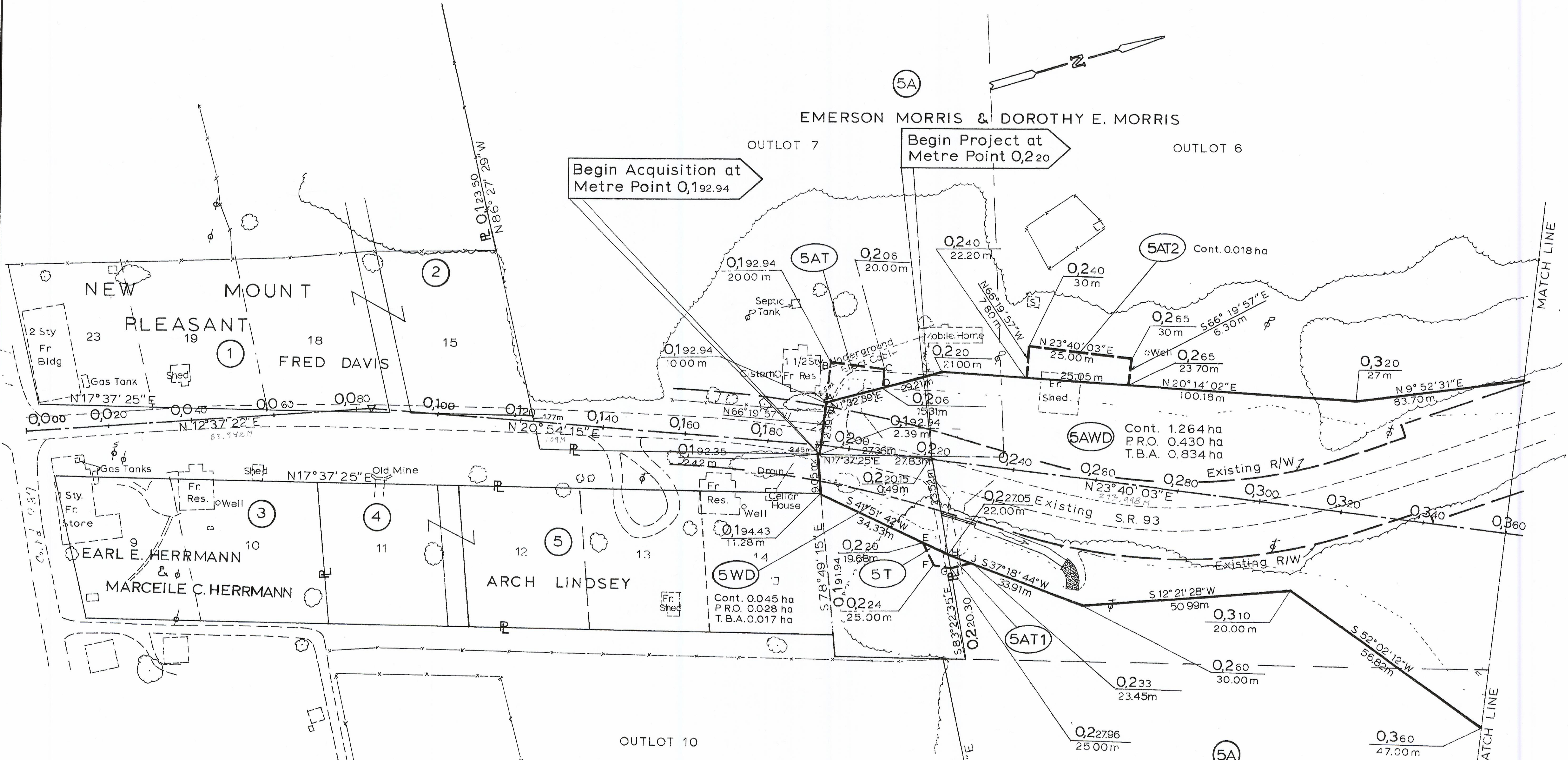


SCALE $\frac{1}{500}$
 All measurements in Metric
 1 metre = 3.28083 feet
 Areas are shown in hectares "ha"
 1 hectare = 10,000 sq. metres or
 2.471 acres



PARCEL DESCRIPTIONS

5AT	Cont. 0.010 ha
A to B	N 66° 19' 57" W 10m
B to C	N 23° 40' 03" E 130.6m
C to D	S 66° 19' 57" E 4.69m
D to E	S 1° 32' 39" W 141.0m
5T	Cont. 0.002 ha
E to H	N 41° 51' 42" E 7.42m
H to G	S 83° 22' 35" E 3.14m
G to F	S 23° 40' 03" W 3.96m
F to E	S 76° 42' 42" W 6.65m
5AT1	Cont. 0.001 ha
H to J	N 37° 18' 44" E 6.13m
J to G	S 6° 30' 17" W 5.27m
G to H	N 83° 22' 35" W 3.14m

PI. = 0,083.942
 $\Delta = 8^{\circ}16'53''$ Rt.

PI. = 0,192.942
 $\Delta = 2^{\circ}45'48''$ Rt.

WASHINGTON TWP. SECTION 34, T13N R17W

HOC - 93 - 0,220	
DATE	DRAWN BY
REVISIONS	
JOB NO.	
10944(O)	4
TYPE FUND	
STATE	8

R/W PLAN STA. 0.000 TO STA. 0.360