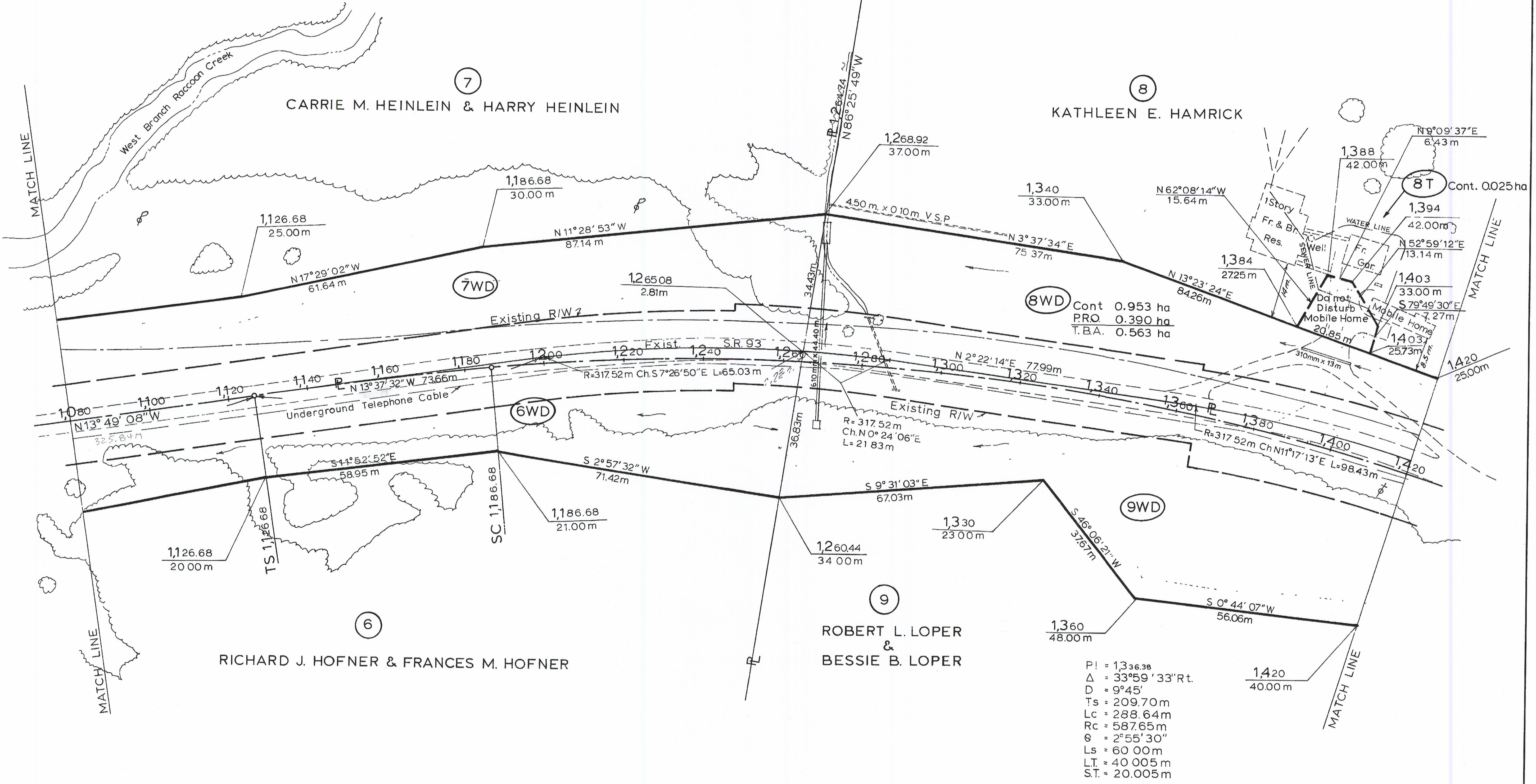
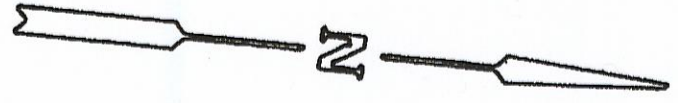


R/W PLANS

SCALE $\frac{1}{500}$
 All measurements in Metric
 1 metre = 3.28083 feet
 Areas are shown in hectares "ha"
 1 hectare = 10,000 sq. metres or
 2.471 acres



$PI = 1,336.38$
 $\Delta = 33^{\circ}59'33''Rt.$
 $D = 9^{\circ}45'$
 $Ts = 209.70m$
 $Lc = 288.64m$
 $Rc = 587.65m$
 $\theta = 2^{\circ}55'30''$
 $Ls = 60.00m$
 $LT = 40.005m$
 $ST = 20.005m$

WASHINGTON TWP, SECTION 34, T13N, R17W

HOC-93-0,220	
DATE	DRAWN BY
REVISIONS	
JOB NO.	7
10944(0)	
TYPE FUND	8
STATE	

R/W PLAN STA. 1,080 TO STA. 1,420